



2410 S Leaton Rd

Mount Pleasant, Michigan 48858

Property Highlights

- Close proximity to Soaring Eagle Casino and Resort
- Will build to suit
- Ample onsite parking
- Join Cardinal Pharmacy and Indoor Growers Edge in the Arnold J. Sowmick Sr. Plaza

Offering Summary

Lease Rate:	\$12.00 SF/yr (NNN)
Building Size:	13,885 SF
Available SF:	1,122 SF
Lot Size:	2,821,732 SF

Spaces	Lease Rate	Space Size
Suite 3	\$12.00 SF/yr	1,122 SF

For More Information

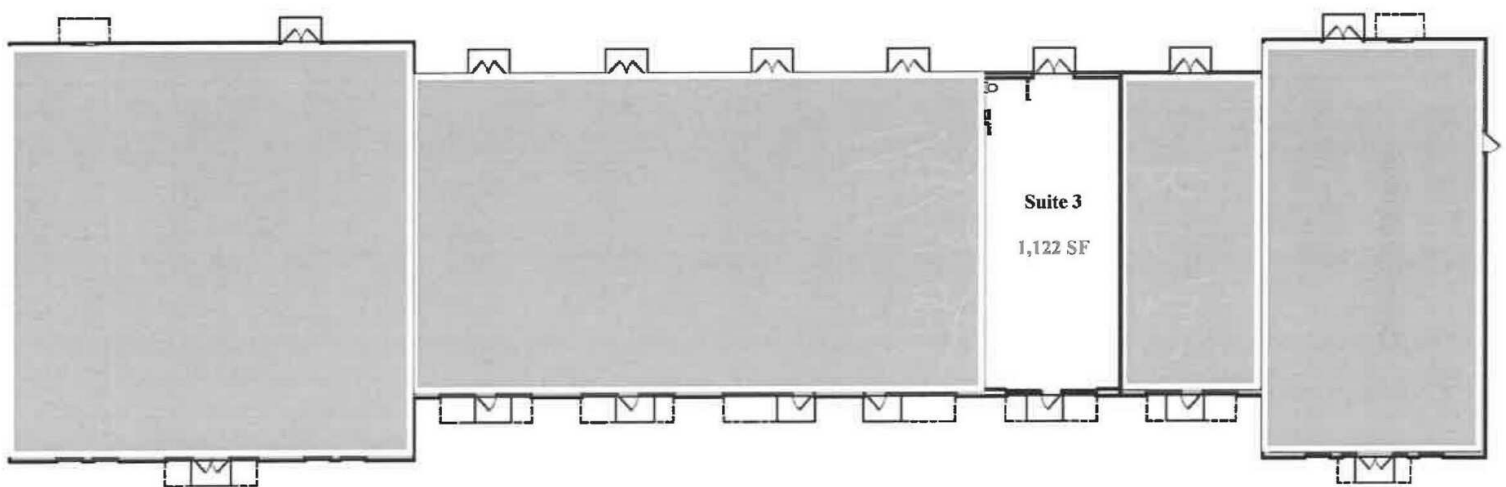


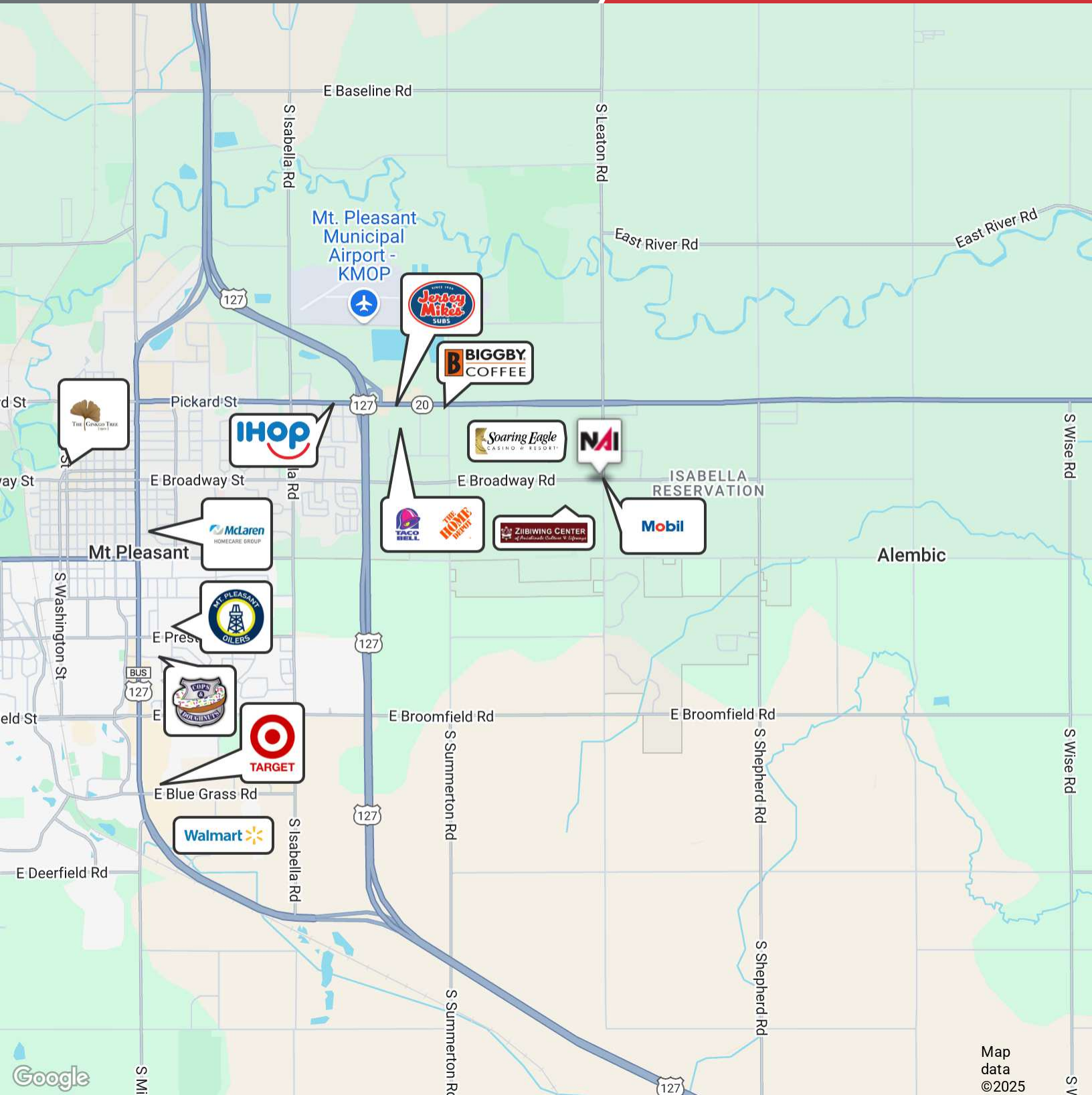
Jeffrey Branch

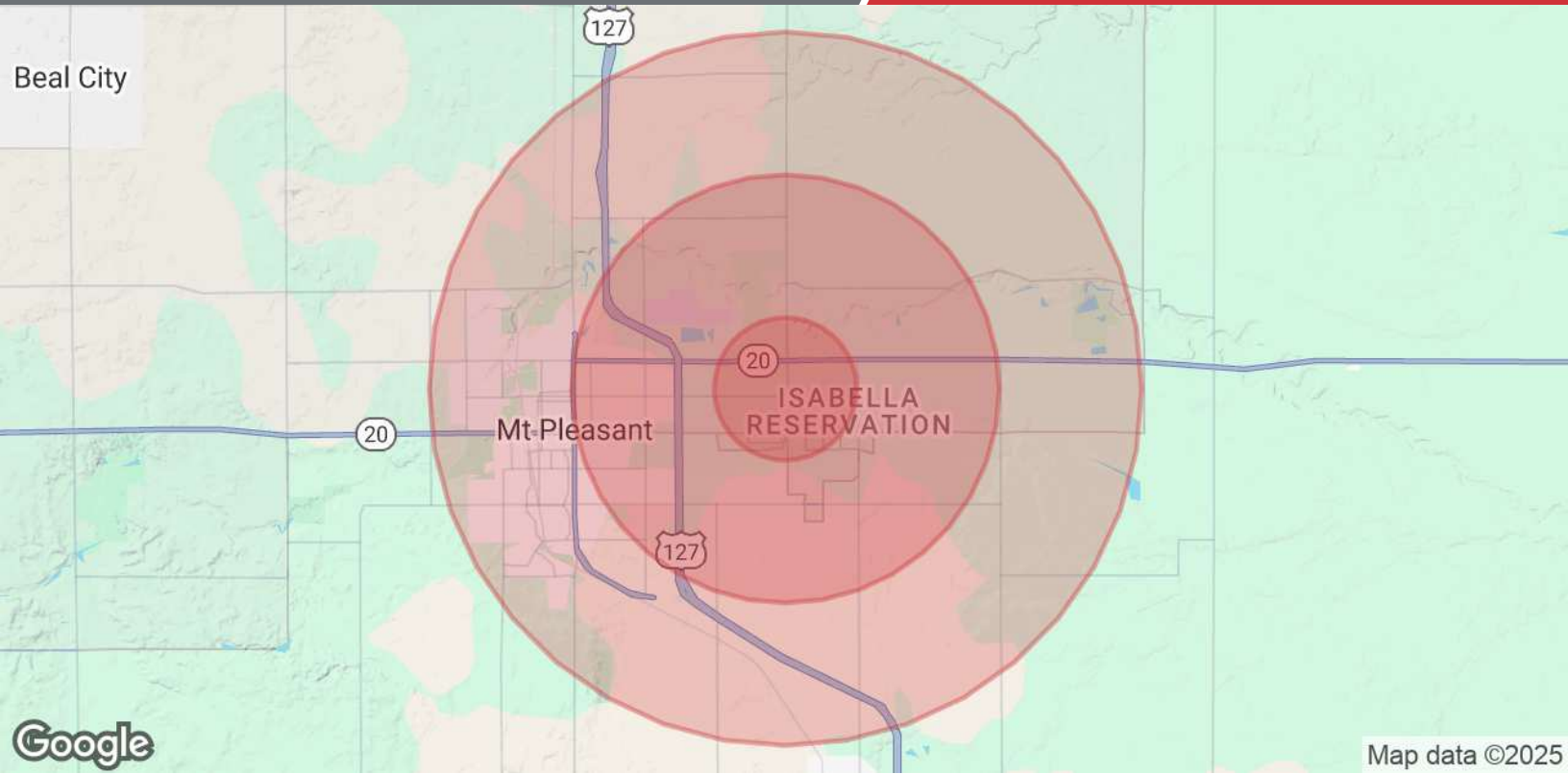
Commercial Advisor

O: 517 487 9222 | C: 517 899 6368

jbranch@naimidmichigan.com







Population	1 Mile	3 Miles	5 Miles
Total Population	756	13,055	35,620
Average Age	40	38	34
Average Age (Male)	38	36	33
Average Age (Female)	41	39	35
Households & Income	1 Mile	3 Miles	5 Miles
Total Households	294	5,969	14,510
# of Persons per HH	2.6	2.2	2.5
Average HH Income	\$102,506	\$76,323	\$67,653
Average House Value	\$226,634	\$198,023	\$207,313

Demographics data derived from AlphaMap