

PRIME MEDICAL OFFICE SPACE FOR LEASE

Near MyMichigan Medical Center



FOR LEASE
710 Columbus Drive,
West Branch, MI

**AVAILABLE
SPACE:**
±2,957 RSF

VAN W. MARTIN, SIOR, CCIM, CRE
President & CEO
Direct: 517 319-9245
van.martin@martincommercial.com


Martin

1111 Michigan Ave., Ste 300
East Lansing, MI 48823
martincommercial.com

Move-In Ready Medical Suite – Ideal for Healthcare or Office Use

This 2,957 RSF medical office suite is ideally located near MyMichigan Medical Center West Branch, offering prime access to numerous clinical centers and senior care facilities. Built in 2000, the suite includes 3 exam rooms, 2 restrooms, a lab, sonogram room, reception, and waiting area. It is fully configured for medical use but can be converted into general office space. The property features 27 lighted parking spaces and is only 2 miles from the I-75 interchange and 1 mile from downtown West Branch, making it a convenient location for medical professionals or general businesses alike.

LEASE RATE:

\$18.00

PSF/YR FULL SERVICE

© 2026 MARTIN COMMERCIAL PROPERTIES, INC. ALL RIGHTS RESERVED. THIS INFORMATION HAS BEEN OBTAINED FROM SOURCES BELIEVED RELIABLE BUT HAS NOT BEEN VERIFIED FOR ACCURACY OR COMPLETENESS. YOU SHOULD CONDUCT A CAREFUL, INDEPENDENT INVESTIGATION OF THE PROPERTY AND VERIFY ALL INFORMATION. ANY RELIANCE ON THIS INFORMATION IS SOLELY AT YOUR OWN RISK. MARTIN COMMERCIAL PROPERTIES AND THE MARTIN LOGO ARE SERVICE MARKS OF MARTIN COMMERCIAL PROPERTIES, INC. ALL OTHER MARKS DISPLAYED ON THIS DOCUMENT ARE THE PROPERTY OF THEIR RESPECTIVE OWNERS. PHOTOS HEREIN ARE THE PROPERTY OF THEIR RESPECTIVE OWNERS. USE OF THESE IMAGES WITHOUT THE EXPRESS WRITTEN CONSENT OF THE OWNER IS PROHIBITED.

PROPERTY HIGHLIGHTS



SUITE SIZE:
2,957 RSF



SITE:
0.82 ACRE



BUILT:
in 2000



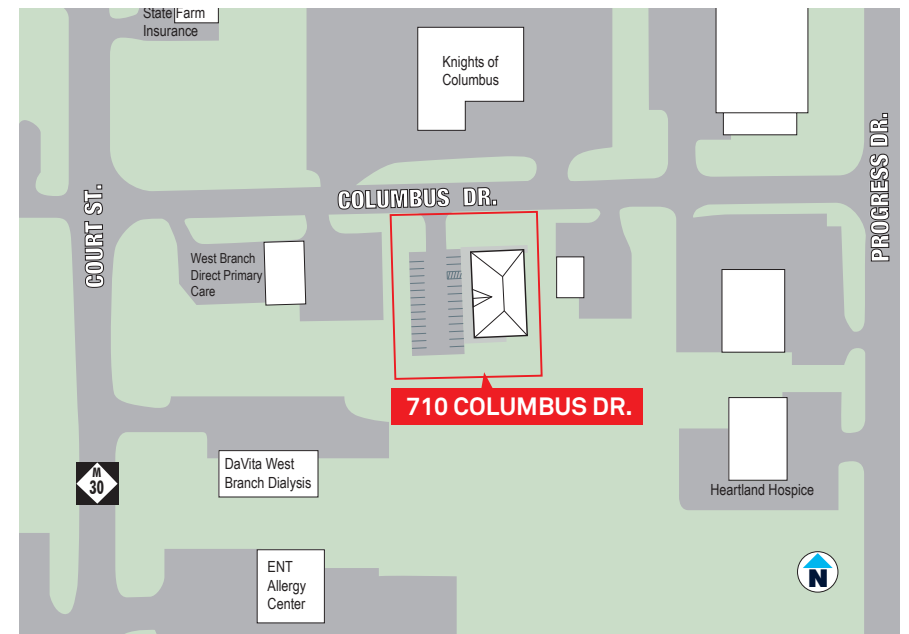
PARKING:
27 Striped
Lighted Spaces



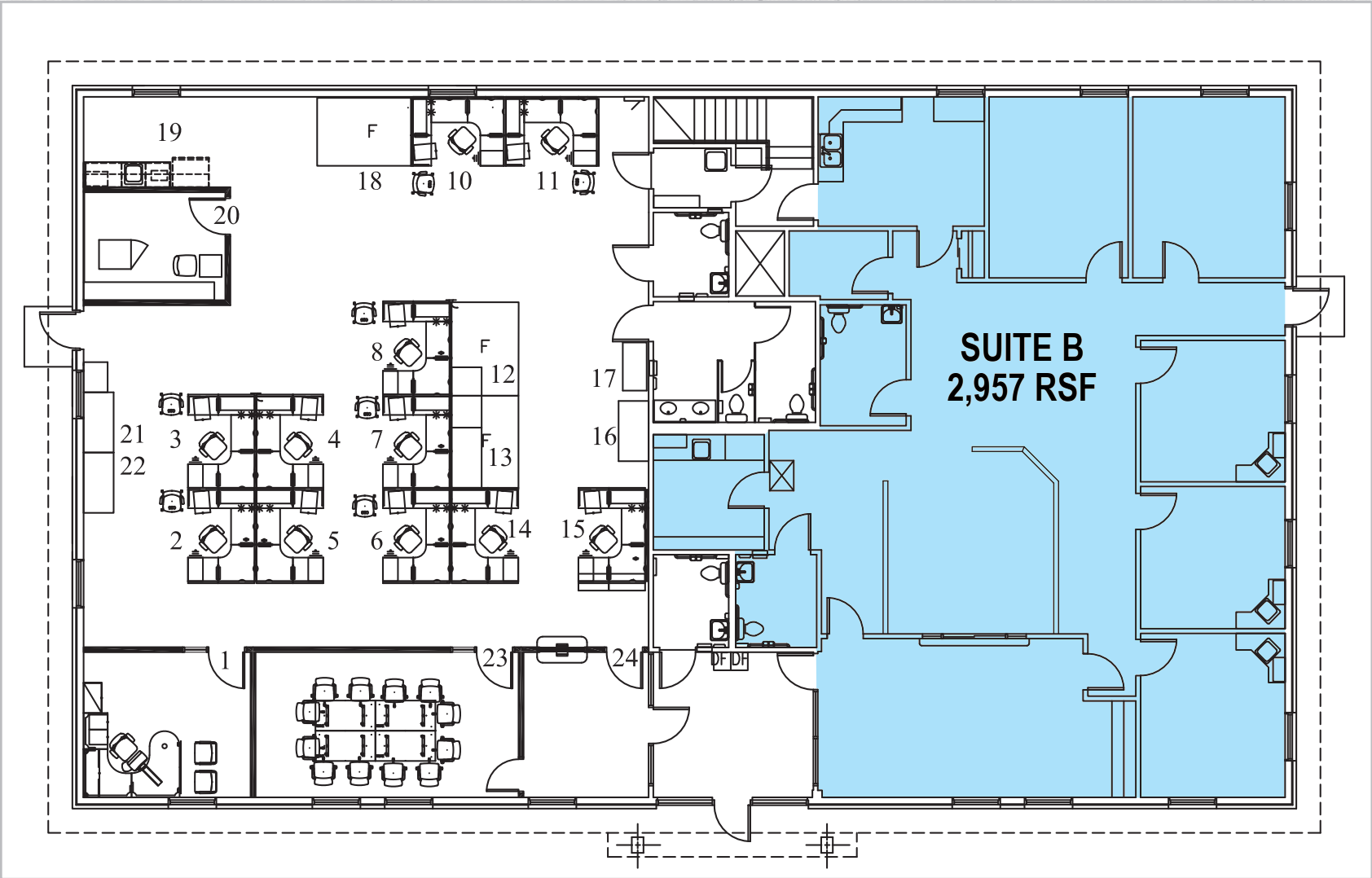
CONVENIENT:
to I-75
Interchange



ZONING:
Office



FLOOR PLAN SUITE B



AREA INFORMATION

0.8 Miles

to MyMichigan Medical Center in West Branch

1 Mile

to Downtown West Branch

2.3 Miles

to I-75

6 Minutes

to Cook Road retail corridor

35 Minutes

to the communities of Edwards, Houghton Lake, Roscommon, Rose City and Standish

