

Established Brewery & Café Business Opportunity

8080 Grand St, Suite 3, Dexter, MI 48130



FOR SALE



OFFERING SUMMARY

Sale Price:	\$525,000
Included Value in Sale Price	
Brewery Buildout:	\$280,000
Equipment:	\$180,000
2024 Gross Sales:	\$483,620
Brewery SF:	2,602 SF
Zoning:	VC (Village Commercial)

Contact Broker for Showing

Non-disclosure Agreement required for Financials

BUSINESS HIGHLIGHTS

- Tap Room capacity – seats up to 80 guests with current seating of 56 guests with custom bar, custom furnishings, and ambient lighting
- 3-Season Patio
- Brewing Equipment
- Coffee Program
- Revenue Streams – taproom beer and coffee sales, wholesale distribution, events, and merchandise
- Growth Potential – expand distribution, online sales, events, and food offerings
- Licenses & Permits
- Included Assets – brewing and coffee equipment, furnishings, inventory, recipes, branding, and digital assets
- Lease Term – through January 14, 2029 at market rate with five year option
- Training & Transition Support – available from seller to ensure smooth hand-off

Jeff Evans

734.926.0222

jeffevans@swishercommercial.com

Established Brewery & Café Business

8080 Grand St, Suite 3, Dexter, MI 48130



For Sale



Jeff Evans

734.926.0222

jeffevans@swishercommercial.com

PROPERTY DESCRIPTION

Property & Facility Highlights:

Location: Prime suburban setting with steady foot traffic, high visibility, and proximity to complementary retail and dining establishments. Flexible food options with food permit. Food trucks also permitted. Located directly next door to the Raterman Bread Haus & Bistro makes for a great neighbor collaborative of brewery/coffee & bakery/bistro.

Taproom: Inviting and well-designed interior with capacity for up to 80 guests, featuring a custom bar, custom furnishings, and warm ambient lighting.

3-Season Patio: Landscaped outdoor seating area ideal for events, live music, and community gatherings.

Brewing Equipment: 3.5-barrel brewing system with stainless-steel fermentation tanks and glycol chilling system; scalable for increased production.

Coffee Equipment: Victoria Arduino 2-group espresso machine, grinders, batch brew, and RO system for premium beverage service.

Licenses: All active brewing, food service, and sales licenses are current, ensuring an efficient ownership transition.

Lease: Secure lease through January 14, 2029 at market rate with five year option.

Established Brewery & Café Business

8080 Grand St, Suite 3, Dexter, MI 48130



For Sale

Products & Operations

Erratic Ale Co. produces a diverse range of craft beverages — from American and Belgian-style ales to rich stouts and crisp lagers — complemented by a full-service coffee bar. With more than 30 refined recipes, this operation has successfully built a reputation for both quality and innovation.

Detailed financials, inventory lists, and production data are available for qualified buyers upon request and with executed Non-disclosure Agreement

Included in Sale:

- Complete 3.5-barrel brewing system & seven fermenters
- Espresso and coffee brewing equipment
- Fully furnished taproom and patio
- Raw materials, finished product inventory, & branded merchandise
- Intellectual property: name, recipes, logos, digital assets
- Optional seller training and transition support, including introductions to suppliers and distributors



Jeff Evans

734.926.0222

jeffevans@swishercommercial.com

Established Brewery & Café Business

8080 Grand St, Suite 3, Dexter, MI 48130



For Sale



Jeff Evans

734.926.0222

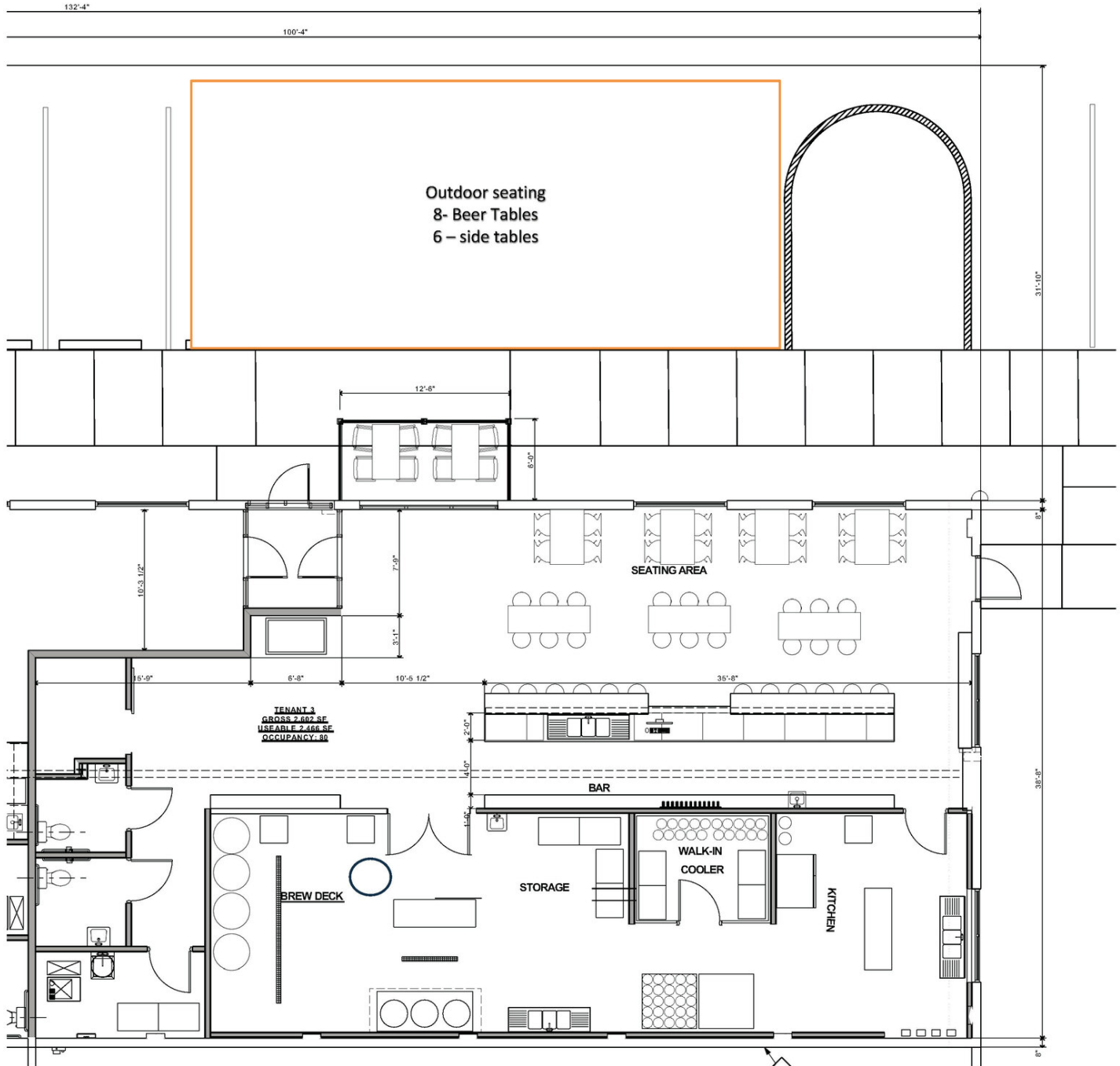
jeffevans@swishercommercial.com

Established Brewery & Café Business

8080 Grand St, Suite 3, Dexter, MI 48130



For Sale



Jeff Evans

734.926.0222

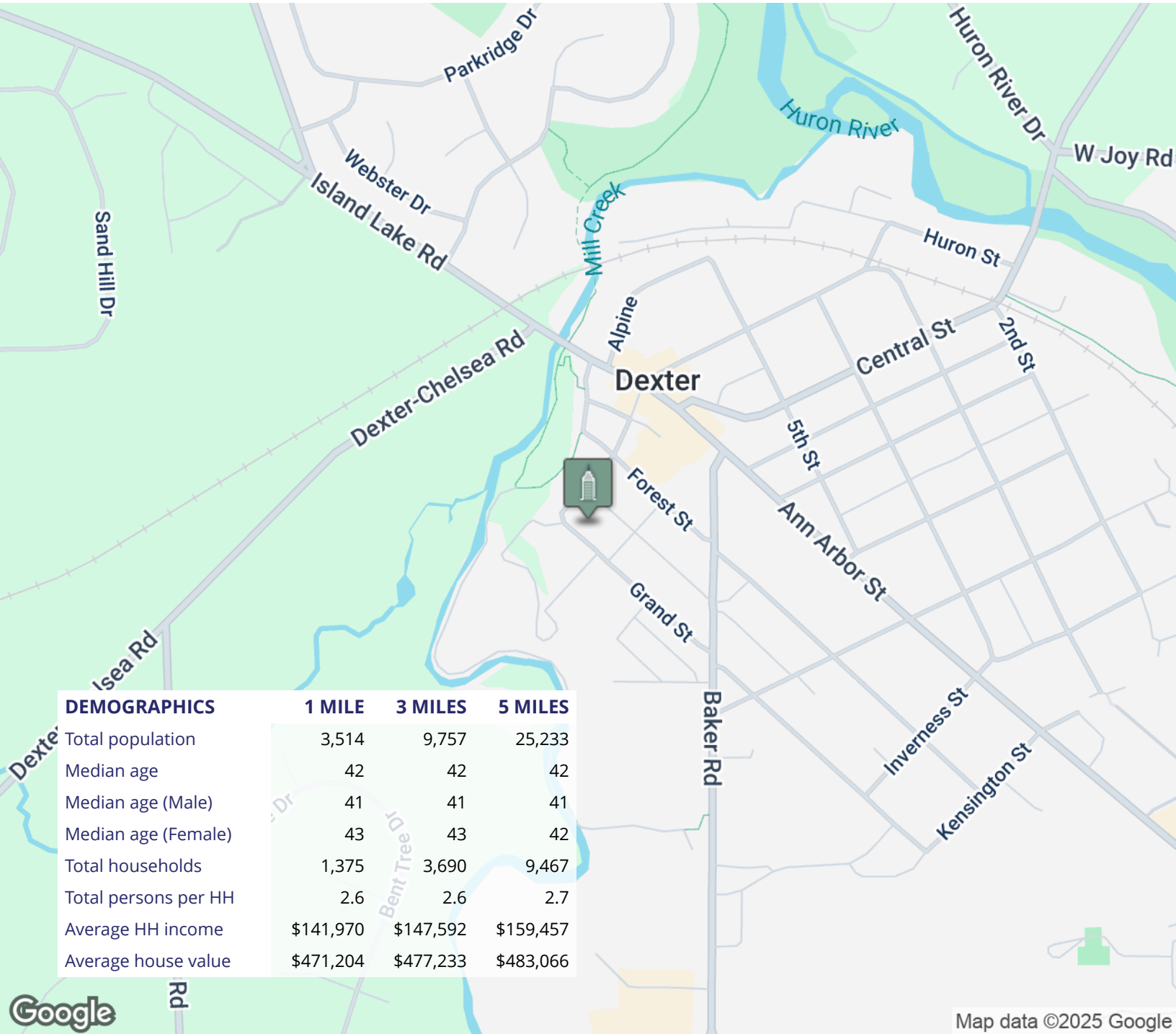
jeffevans@swishercommercial.com

Established Brewery & Café Business

8080 Grand St, Suite 3, Dexter, MI 48130



For Sale



Jeff Evans

734.926.0222

jeffevans@swishercommercial.com