

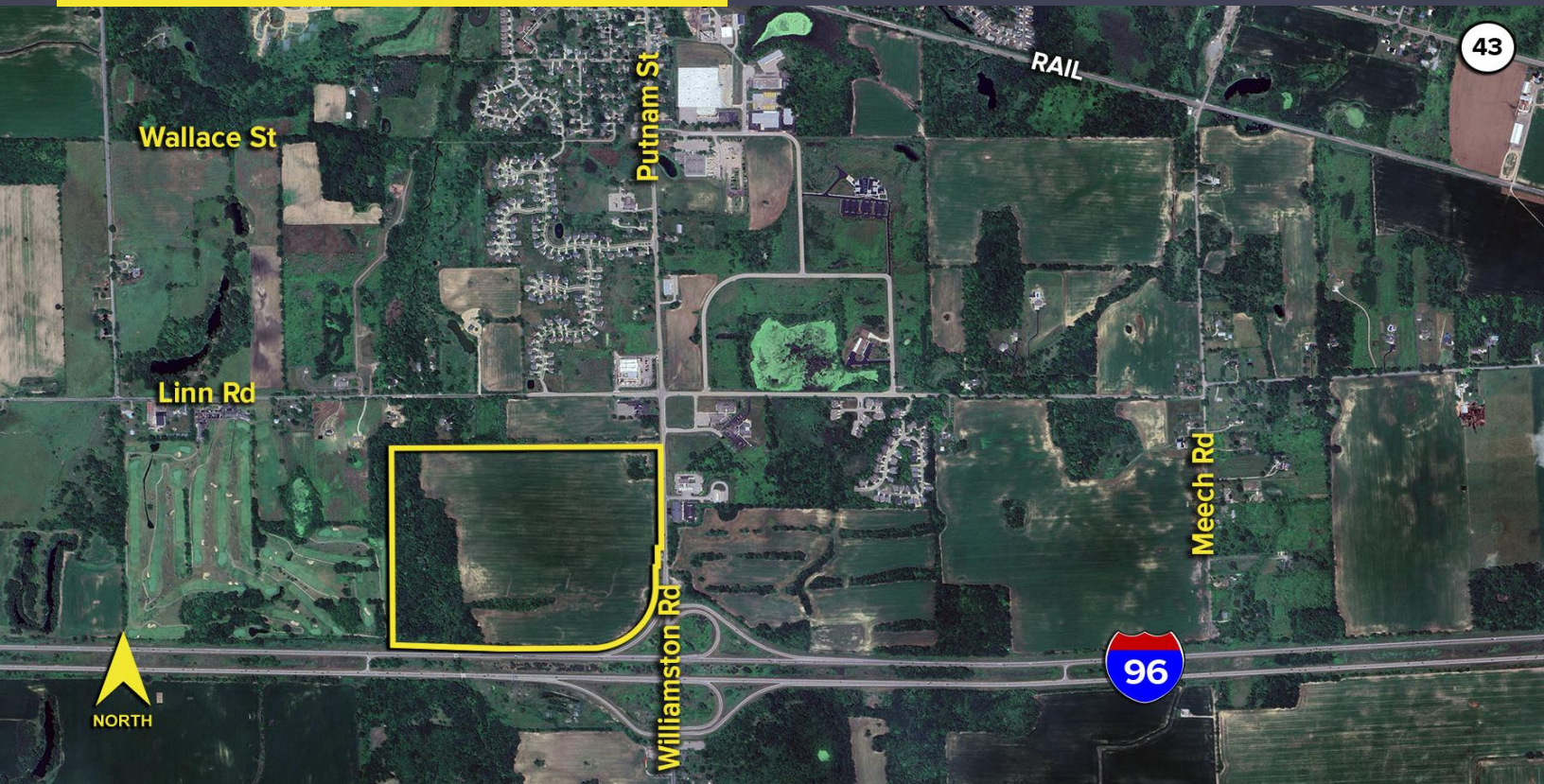
WILLIAMSTON ROAD WILLIAMSTON, MICHIGAN

LAND FOR SALE
123.85 Acres Available



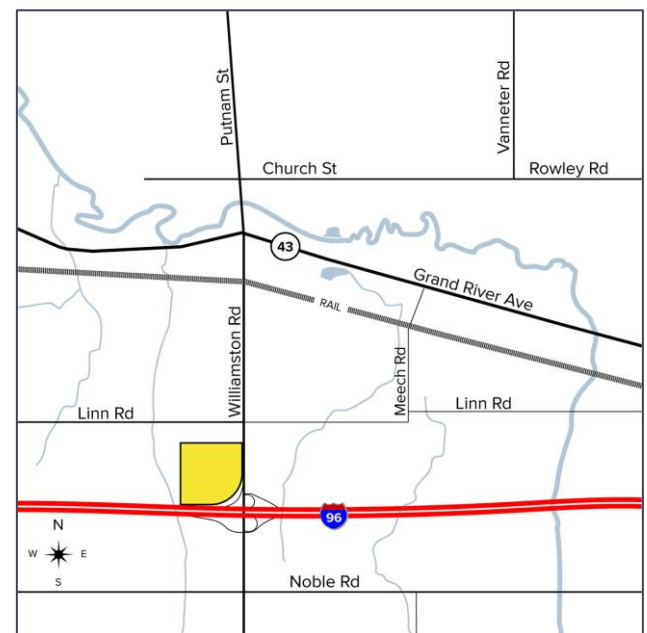
**SIGNATURE
ASSOCIATES**
KNOW SIGNATURE | KNOW RESULTS

I-96 FRONTAGE



PROPERTY FEATURES

- 123.85 acres available
- Zoned PO-11, C-4
- Significant I-96 frontage
- Sale price: \$3,600,000 (\$29,067.42/acre)



For more information, please contact:

CHRIS MONSOUR
(248) 948 0107
cmonsour@signatureassociates.com

SIGNATURE ASSOCIATES
One Towne Square, Suite 1200
Southfield, MI 48076
www.signatureassociates.com

Information is subject to verification and no liability for errors or omissions is assumed. Price is subject to change and listing withdrawal.