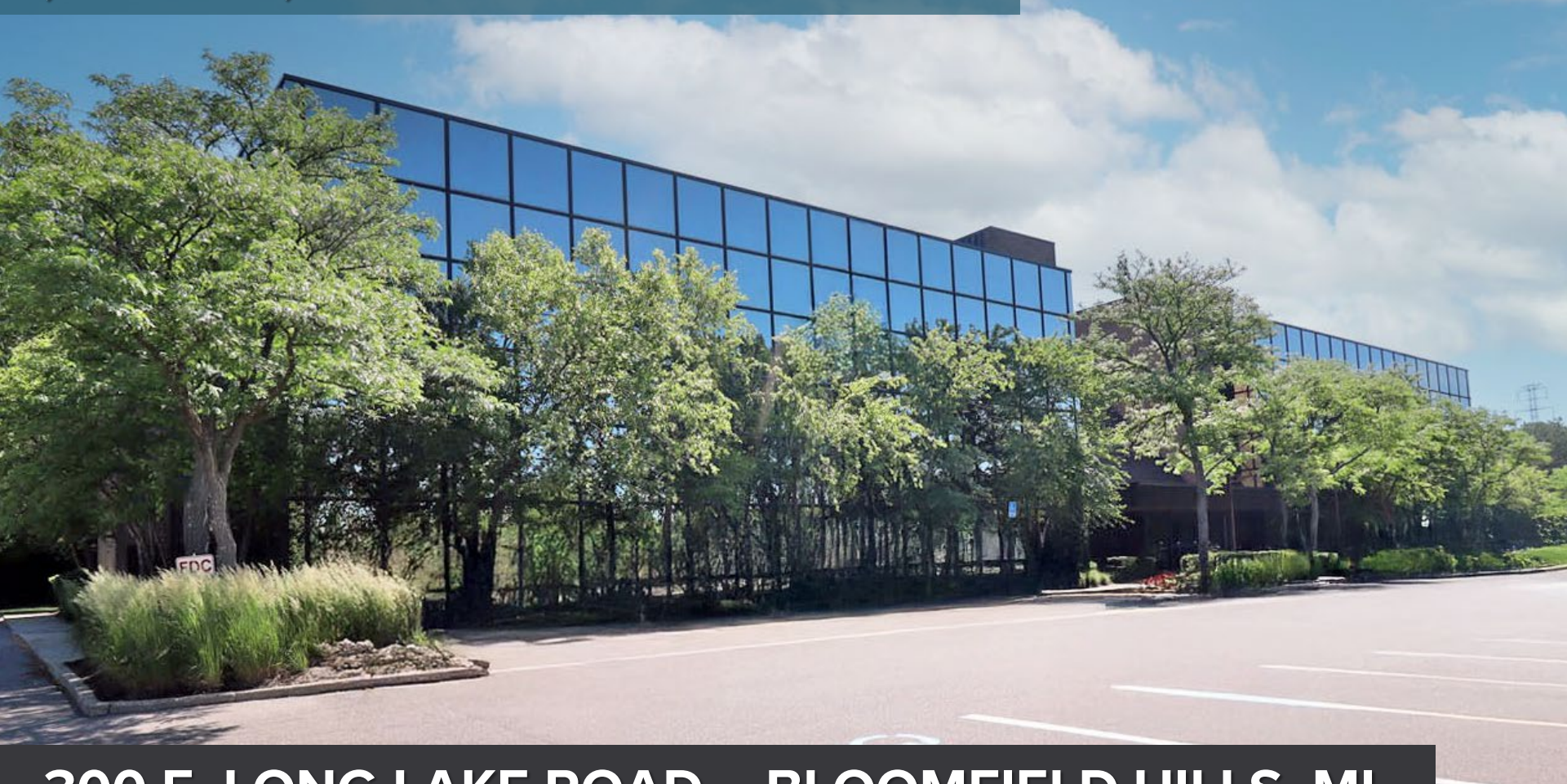


# PREMIUM OFFICE AVAILABLE

## 1,025 – 29,882 SQUARE FEET



## 300 E. LONG LAKE ROAD – BLOOMFIELD HILLS, MI

For more information, contact:

**DAVE MILLER**  
(248) 948 4183  
dmiller@signatureassociates.com

**DAN MORROW**  
(248) 799 3144  
dmorrow@signatureassociates.com



**SIGNATURE  
ASSOCIATES**  
KNOW SIGNATURE | KNOW RESULTS

Information is subject to verification and no liability for errors or omissions is assumed. Price is subject to change and listing withdrawal.





# OVERVIEW

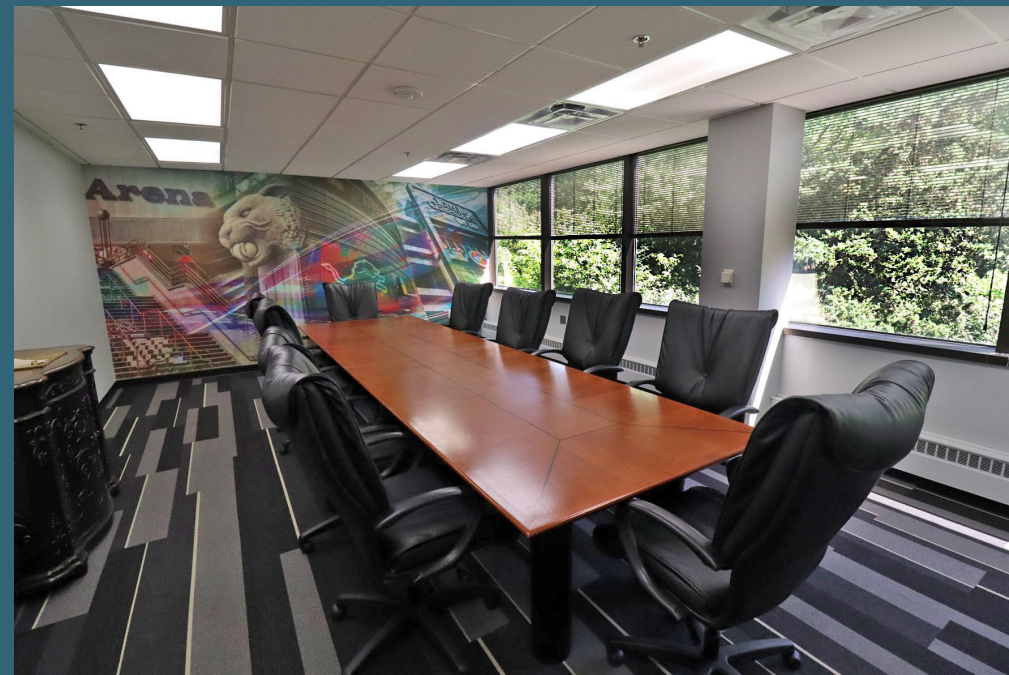
- 1,025 – 13,776 square foot suites available
- 29,882 square feet vertically contiguous available
  - 1<sup>st</sup> Floor: 8,039 SF
  - 2<sup>nd</sup> Floor: 13,776 SF
  - 3<sup>rd</sup> Floor: 8,067 SF
- Fully renovated, Class A office building in a wooded setting
- Move-in ready suites available (3<sup>rd</sup> Floor)
- Impeccably maintained, renovated lobby, recent capital improvements, and new parking lot
- 214 parking spaces
- Located in the heart of Bloomfield Hills
- Available immediately
- Lease Rate: \$21.95/sq. ft. + E







## WELL MAINTAINED OFFICE SPACE





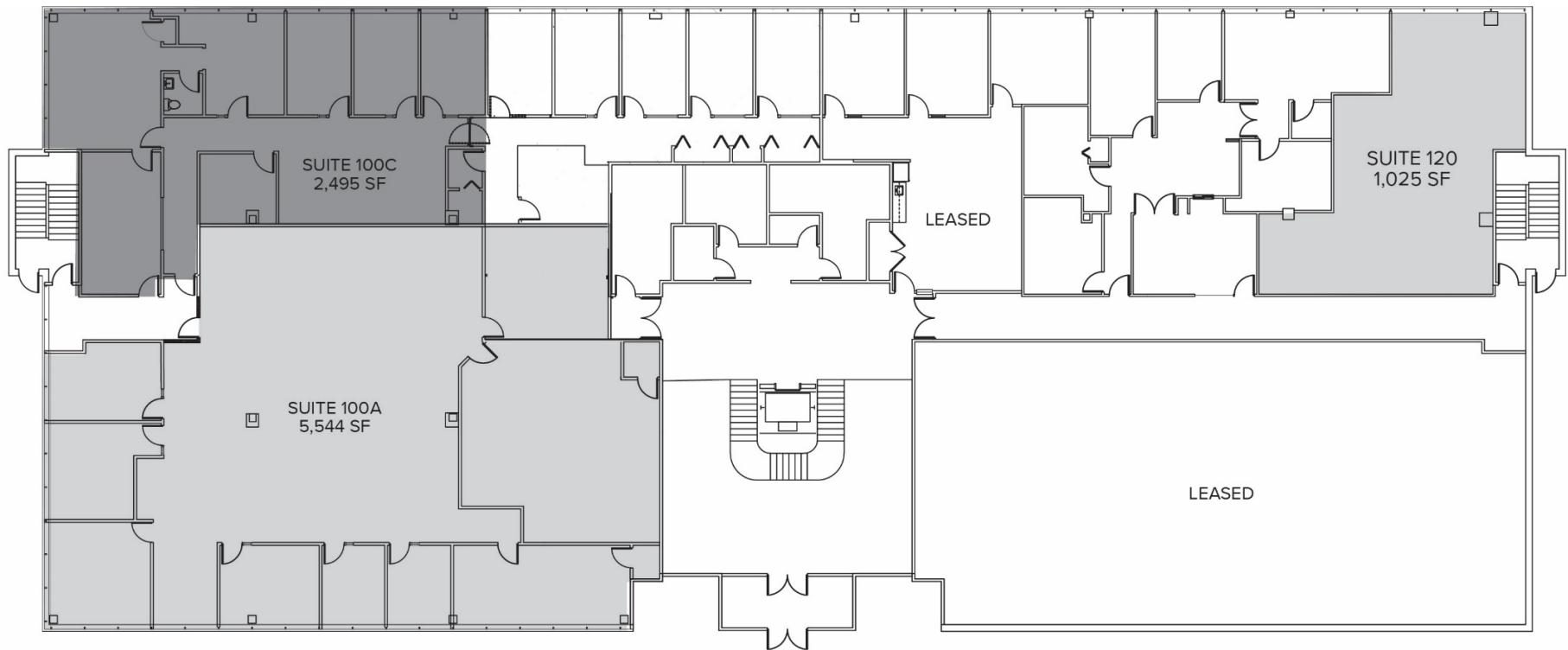


**LOCATED IN A BEAUTIFUL WOODED AREA**



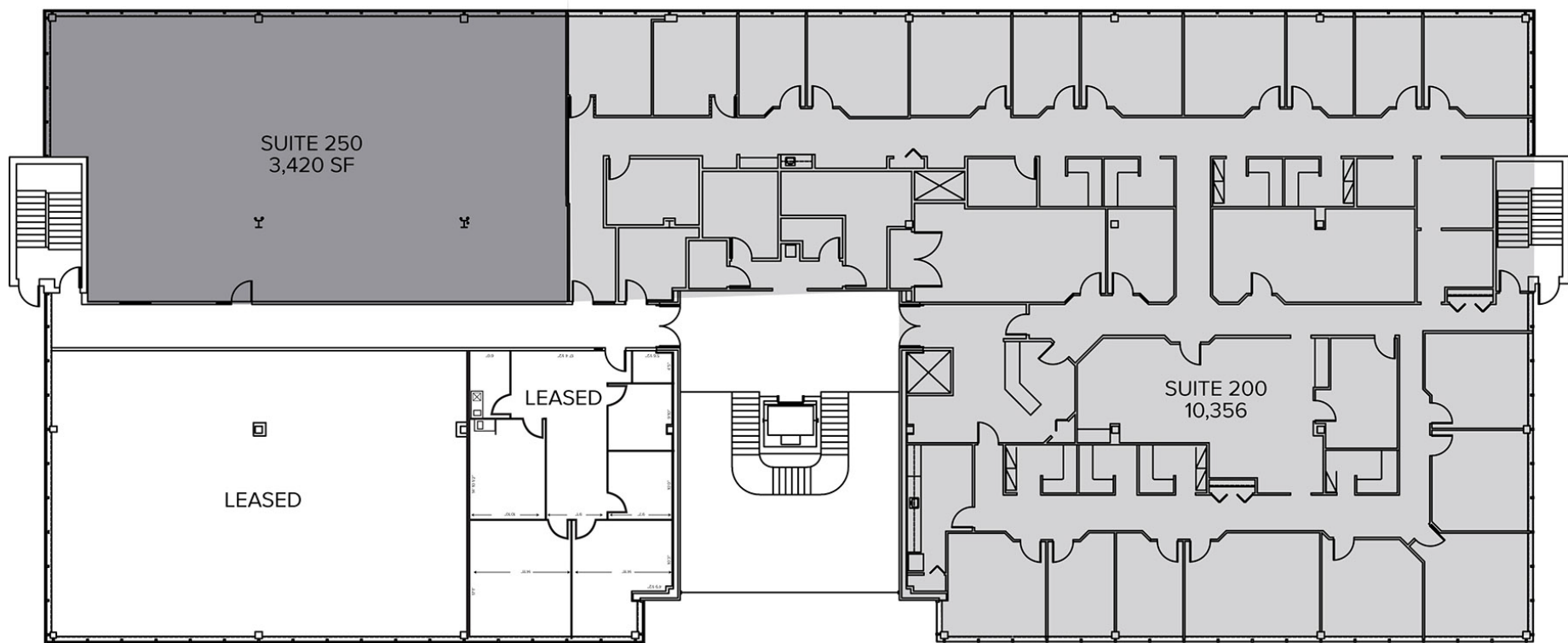
# 1<sup>ST</sup> FLOOR

- Suite 100A – 5,544 Sq. Ft. Available
- Suite 120 - 1,025 Sq. Ft. Available
- Suites 100A & 100C – 8,039 Sq. Ft. Available



## 2<sup>ND</sup> FLOOR

- Suite 200 – 10,356 Sq. Ft. Available
- Suite 250 – 3,420 Sq. Ft. Available
- Suites 200 & 250 – 13,776 Sq. Ft. Available



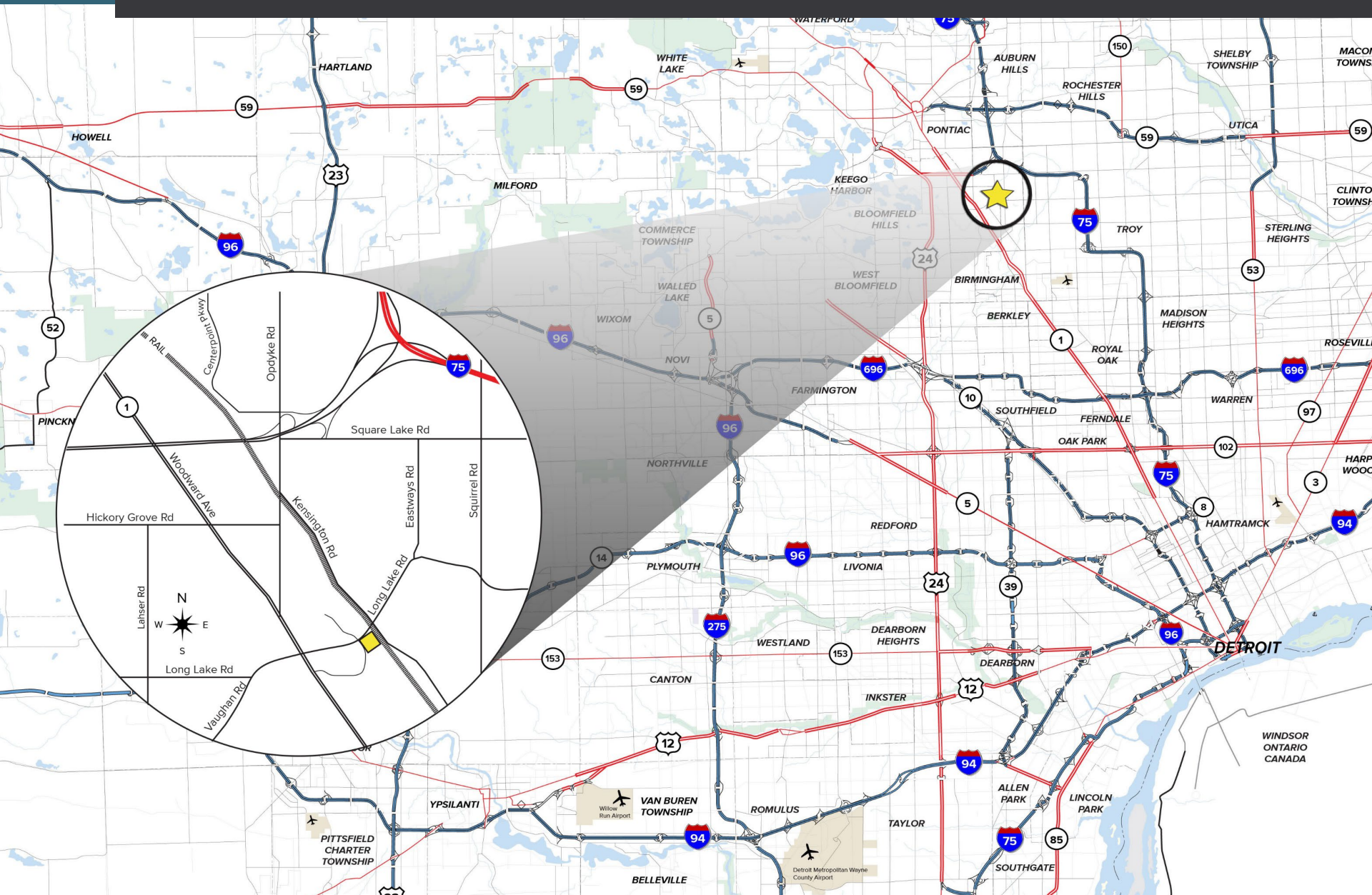
# 3<sup>rd</sup> FLOOR

— Suite 300 – 8,067 Sq. Ft. Available





# AREA MAP





For more information, contact:

**DAVE MILLER**

(248) 948 4183

[dmiller@signatureassociates.com](mailto:dmiller@signatureassociates.com)

**DAN MORROW**

(248) 799 3144

[dmorrow@signatureassociates.com](mailto:dmorrow@signatureassociates.com)

BROKERAGE SERVICES

TENANT REPRESENTATION

INVESTMENT SALES

BUSINESS SALES

VALUATION

ADVISORY SERVICES

PROPERTY/ASSET MANAGEMENT

CONSULTING

MARKET RESEARCH

MARKETING

**SIGNATURE ASSOCIATES**

One Towne Square, Suite 1200

Southfield, Michigan 48076

(248) 948 9000

[www.signatureassociates.com](http://www.signatureassociates.com)

Information is subject to verification and no liability for errors or omissions is assumed. Price is subject to change and listing withdrawal.



**SIGNATURE  
ASSOCIATES**  
KNOW SIGNATURE | KNOW RESULTS