

16426 W. MCNICHOLS ROAD
DETROIT, MICHIGAN



**SIGNATURE
ASSOCIATES**
KNOW SIGNATURE | KNOW RESULTS

RETAIL FOR LEASE
10,000 Square Feet Available



PROPERTY FEATURES

- 10,000 square feet available
- 12' clear height
- Zoned B2
- Former daycare center
- Convenient access to Southfield Freeway
- Lease Rate: \$2,500/month G + U



For more information, please contact:

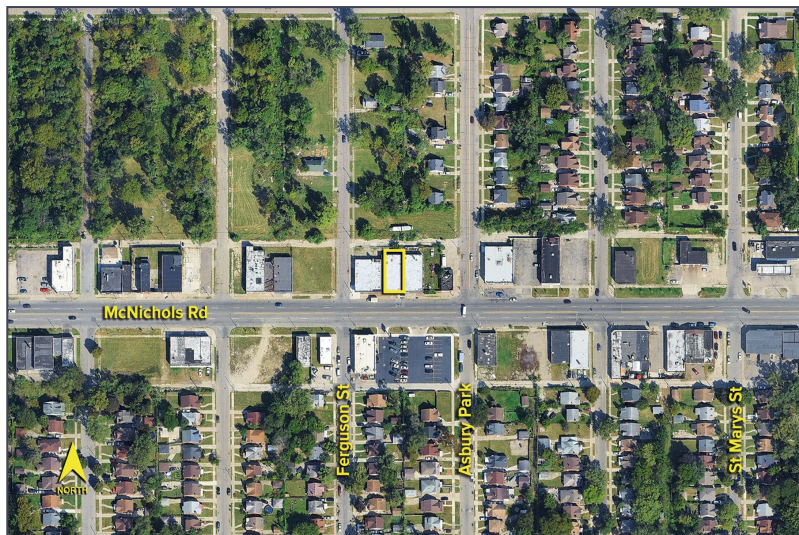
JOE STACK
(248) 359 0615
jstack@signatureassociates.com

SIGNATURE ASSOCIATES
One Towne Square, Suite 1200
Southfield, MI 48076
www.signatureassociates.com

16426 W McNichols Road – Detroit, Michigan

Retail For Lease

10,000
Square Feet
AVAILABLE



DEMOGRAPHICS

	POPULATION	MED. HH INCOME
1 MILE	21,135	\$43,940
3 MILE	155,852	\$46,103
5 MILE	385,211	\$52,189

TRAFFIC COUNTS (TWO-WAY)

28,112	McNichols Rd. E. of M-39
26,119	McNichols Rd. W. of M-39
65,783	M-39. N. of McNichols Rd
64,095	M-39. S. of McNichols Rd



For more information, please contact:

JOE STACK
(248) 359 0615
jstack@signatureassociates.com

SIGNATURE ASSOCIATES
One Towne Square, Suite 1200
Southfield, MI 48076
www.signatureassociates.com