



## 2342 Woodlake Dr

2342 Woodlake Drive  
Okemos, Michigan 48864

### Property Highlights

- Well maintained
- Possible multiple suites
- Great location
- Immediate access to I-96 at Okemos Rd.
- Lodging, restaurants, shopping, and other interchange services
- Plenty of parking

### Offering Summary

Lease Rate:	\$13.00 SF/yr (MG)
Building Size:	5,921 SF
Available SF:	5,921 SF
Lot Size:	1.1 Acres

### For More Information

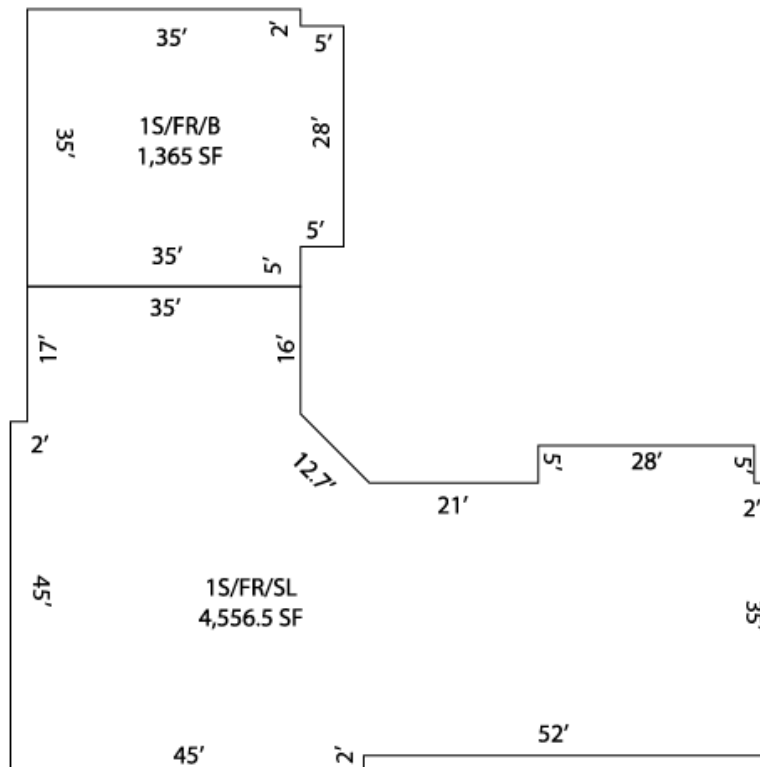
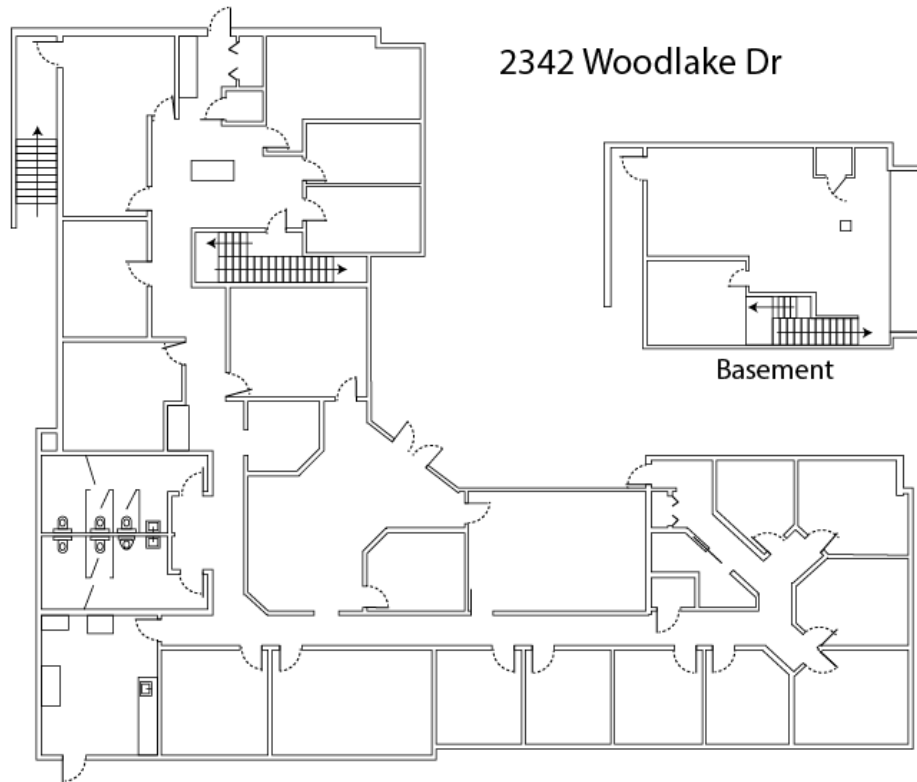


#### Amanda Hopper

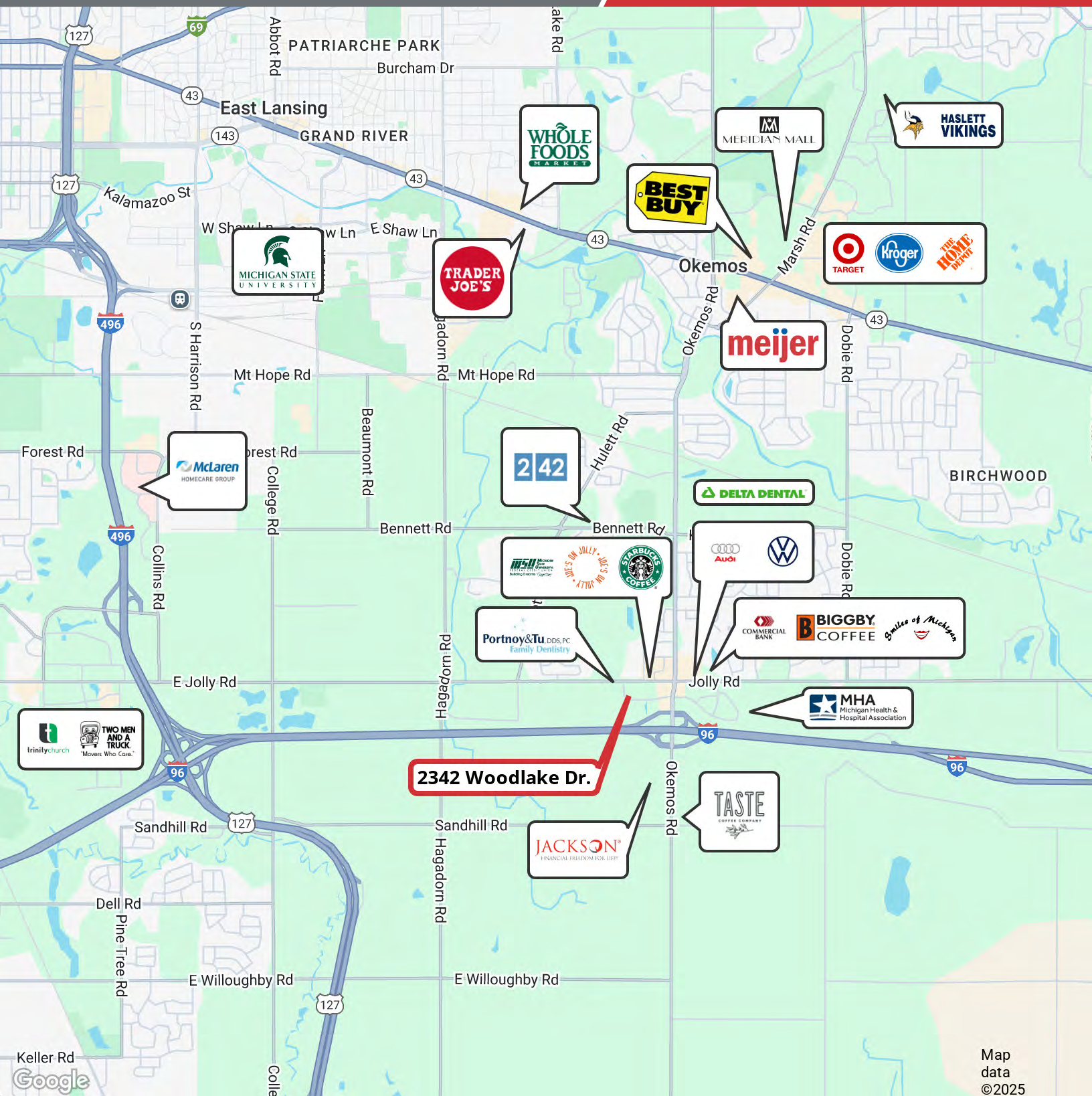
Commercial Advisor, CCIM  
O: 517 487 9222 | C: 517 927 9626  
ahopper@naimidmichigan.com



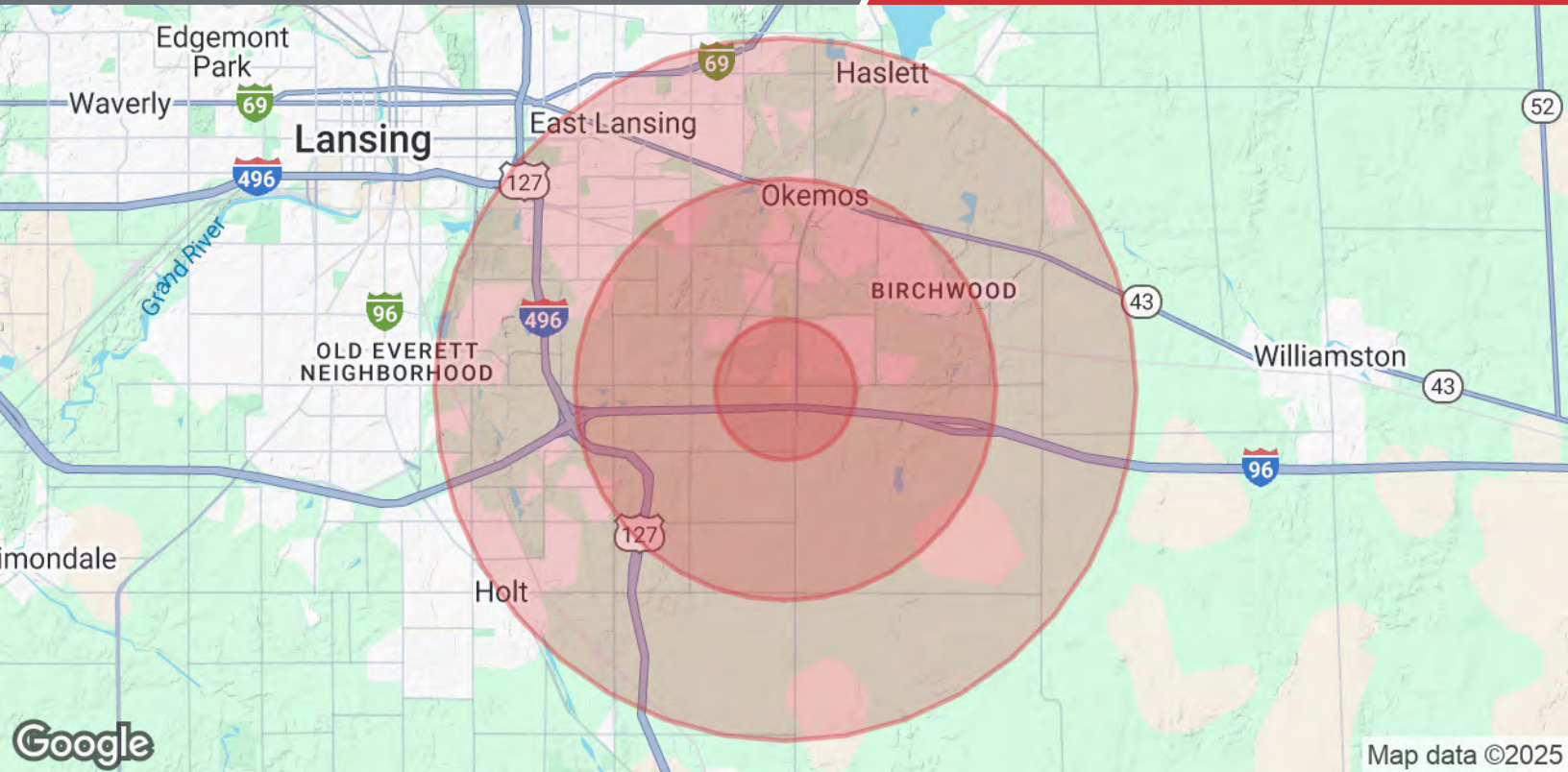












Population	1 Mile	3 Miles	5 Miles
Total Population	4,374	22,838	94,925
Average Age	38	39	34
Average Age (Male)	37	38	34
Average Age (Female)	38	40	35
Households & Income	1 Mile	3 Miles	5 Miles
Total Households	1,692	9,092	35,026
# of Persons per HH	2.6	2.5	2.7
Average HH Income	\$133,946	\$131,299	\$94,024
Average House Value	\$407,817	\$367,297	\$252,435

Demographics data derived from AlphaMap