

# WELL-ESTABLISHED RETAIL CENTER LOCATED ON N. CEDAR IN MASON, MI



**FOR LEASE**  
558 S. Cedar St.  
Mason, MI

**AVAILABLE  
SPACE**  
5,500-11,952 SF



## CARSON PATTEN

Vice President, Retail Advisor  
Direct: 517 319-9230  
[carson.patten@martincommercial.com](mailto:carson.patten@martincommercial.com)

## SAMANTHA LE

Senior Associate, Retail Advisor  
Direct: 517 319-9279  
[samantha.le@martincommercial.com](mailto:samantha.le@martincommercial.com)



1111 Michigan Ave., Ste 300  
East Lansing, MI 48823  
[martincommercial.com](http://martincommercial.com)

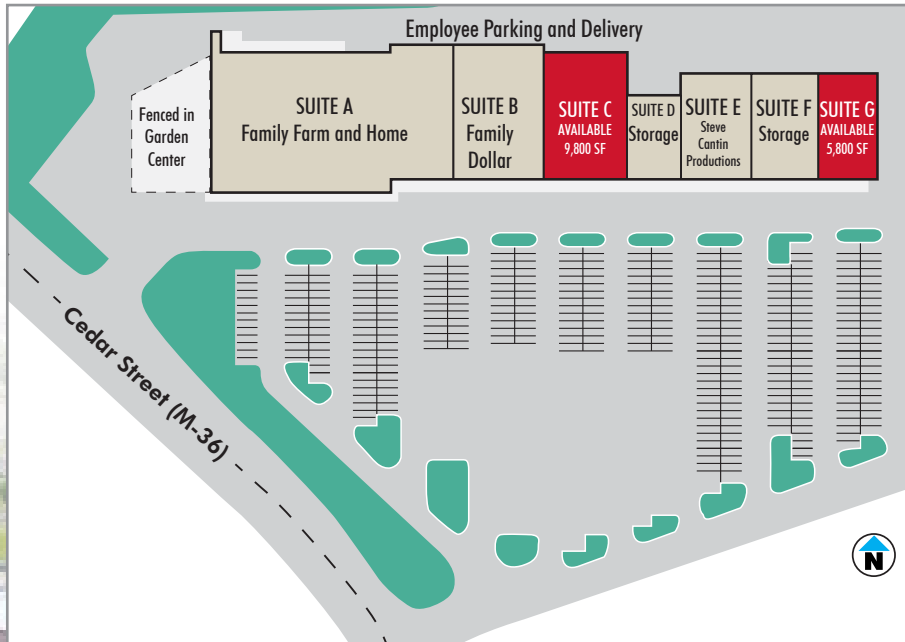


## PROPERTY BROCHURE

Mason Plaza, 558 S. Cedar St., Mason, MI



### AVAILABLE SPACE



### Retail/Service Space in Mason Plaza

Mason Plaza is a 72,000 SF strip center located in the community of Mason, positioned between the historic downtown and US-127. The available suites feature floor-to-ceiling windows and can be customized to meet tenant needs. Anchored by Family Farm and Home and Family Dollar, the center offers prominent signage, ample free parking, and convenient access to Cedar Street.

Mason is a primarily agricultural community and home to Dart Container, the world's largest manufacturer of food service containers. The site is less than one mile from US-127 and downtown Mason, including the County Courthouse, making it an ideal location for retail or service businesses seeking visibility and accessibility.

LEASE RATE:

**\$6-8.00**

PSF/YR NNN

EXPENSES ESTIMATED AT \$2.00 PSF/YR

### PROPERTY INFORMATION



**AVAILABLE:**

Suite C: 9,800 SF

Suite G: 5,800 SF



**PARKING:**

Generous Sized  
Surface Parking Lot



**SIGNAGE:**

Pylon & Building  
Options



**LOCATED:**

Between US-127 and  
Downtown Mason



**SITE:** Ingress/  
Egress From Two  
Entry Points  
Off Cedar St



**GRADE LEVEL:**

Ovhd. Doors on  
Each Suite

© 2025 MARTIN COMMERCIAL PROPERTIES, INC. ALL RIGHTS RESERVED. THIS INFORMATION HAS BEEN OBTAINED FROM SOURCES BELIEVED RELIABLE BUT HAS NOT BEEN VERIFIED FOR ACCURACY OR COMPLETENESS. YOU SHOULD CONDUCT A CAREFUL, INDEPENDENT INVESTIGATION OF THE PROPERTY AND VERIFY ALL INFORMATION. ANY RELIANCE ON THIS INFORMATION IS SOLELY AT YOUR OWN RISK. MARTIN COMMERCIAL PROPERTIES AND THE MARTIN LOGO ARE SERVICE MARKS OF MARTIN COMMERCIAL PROPERTIES, INC. ALL OTHER MARKS DISPLAYED ON THIS DOCUMENT ARE THE PROPERTY OF THEIR RESPECTIVE OWNERS. PHOTOS HEREIN ARE THE PROPERTY OF THEIR RESPECTIVE OWNERS. USE OF THESE IMAGES WITHOUT THE EXPRESS WRITTEN CONSENT OF THE OWNER IS PROHIBITED.

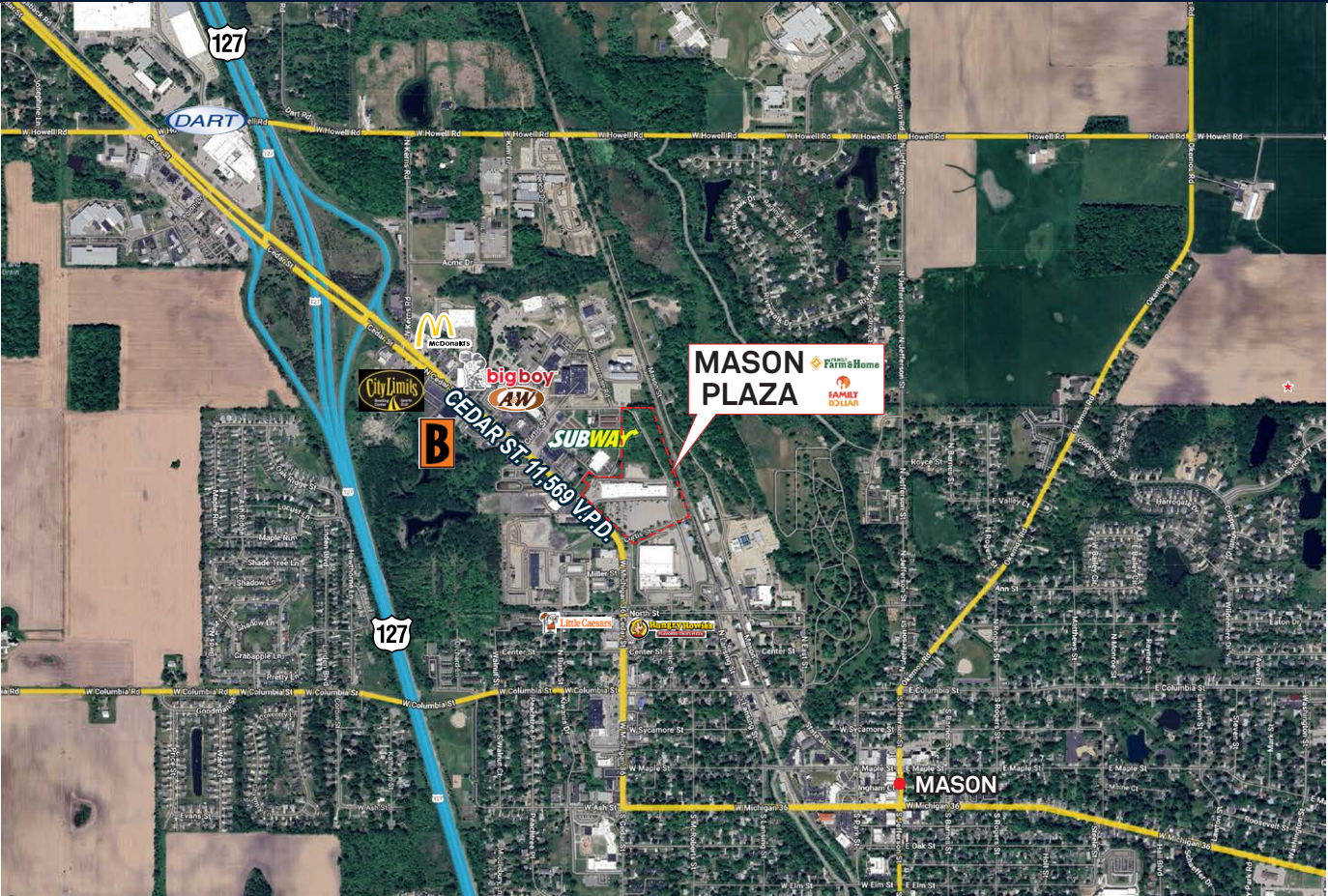
AREA  
INFORMATION

0.7 Miles  
to US-127

1 Mile  
to Mason and Ingham County  
Courthouse

<15 Minutes  
to the communities of Holt, Dansville  
and Leslie

Convenient  
to Big Boy, McDonald's, Arby's, Taco  
Bell, Subway, A&W, Little Caesar's,  
Hungry Howie's Pizza, and more!



DEMOGRAPHICS

Proximity	1-Mile	3-Mile	5-Mile
Population	5,856	11,187	23,811
Households	2,434	4,569	9,523
Labor Force	4,825	9,153	19,342

