



2395 Jolly Rd

Okemos, Michigan 48864

Property Highlights

- Located on Jolly Rd just west of Okemos Rd
- Easy access to I-96
- Restaurants', shopping, hotels and banks close by
- 2,796 SF available with great visibility on Jolly Road
- Potential medical space

Offering Summary

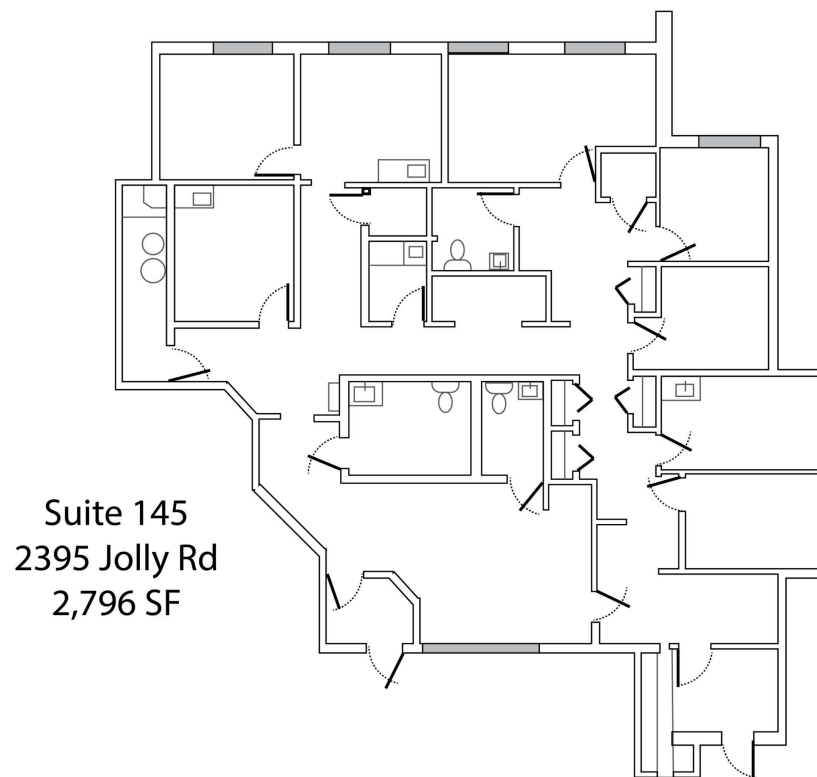
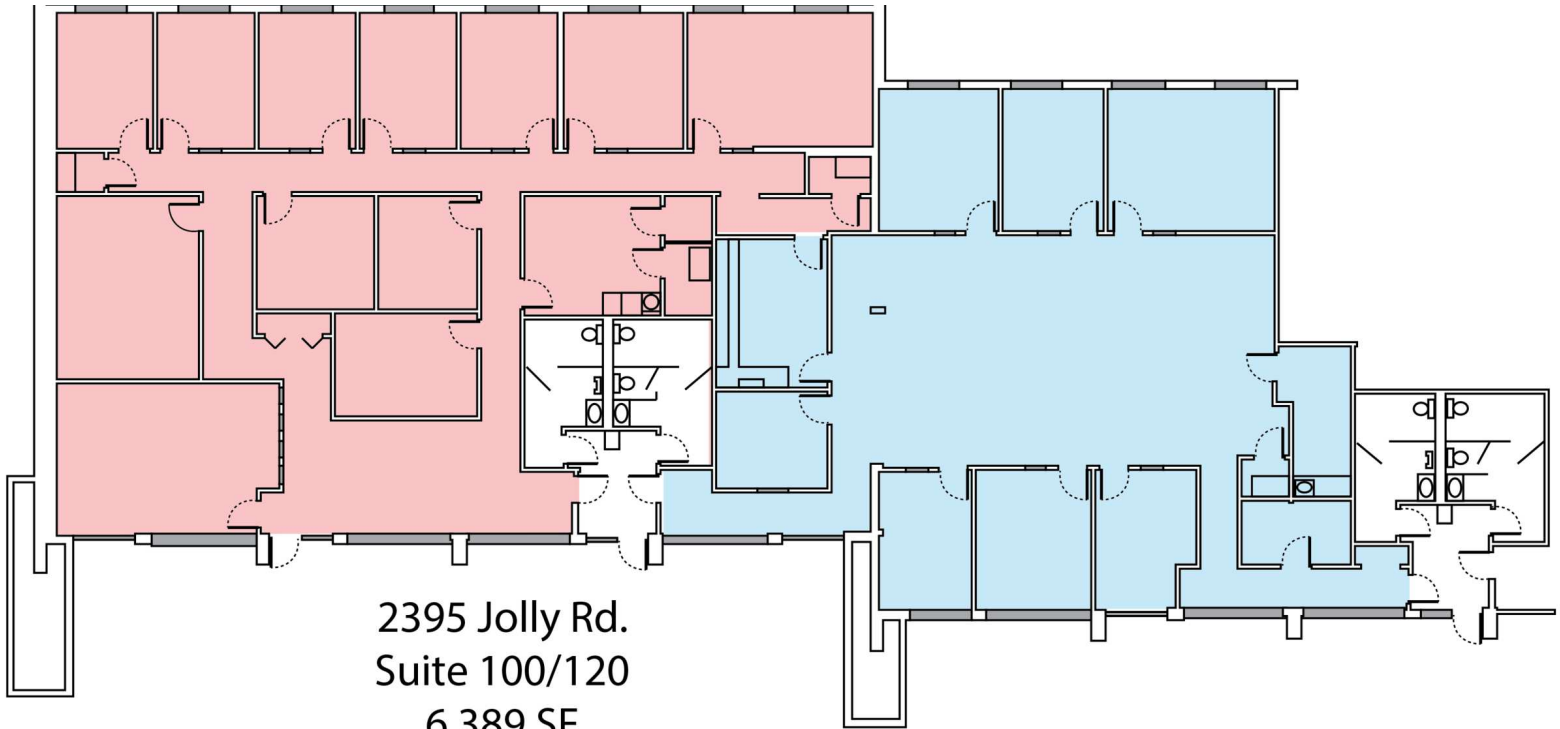
Lease Rate:	\$15.00 SF/yr (MG)
Building Size:	27,240 SF
Available SF:	2,796 - 6,389 SF
Lot Size:	127,432 SF

Spaces	Lease Rate	Space Size
Suite 100-120	\$15.00 SF/yr	6,389 SF
Suite 145	\$15.00 SF/yr	2,796 SF

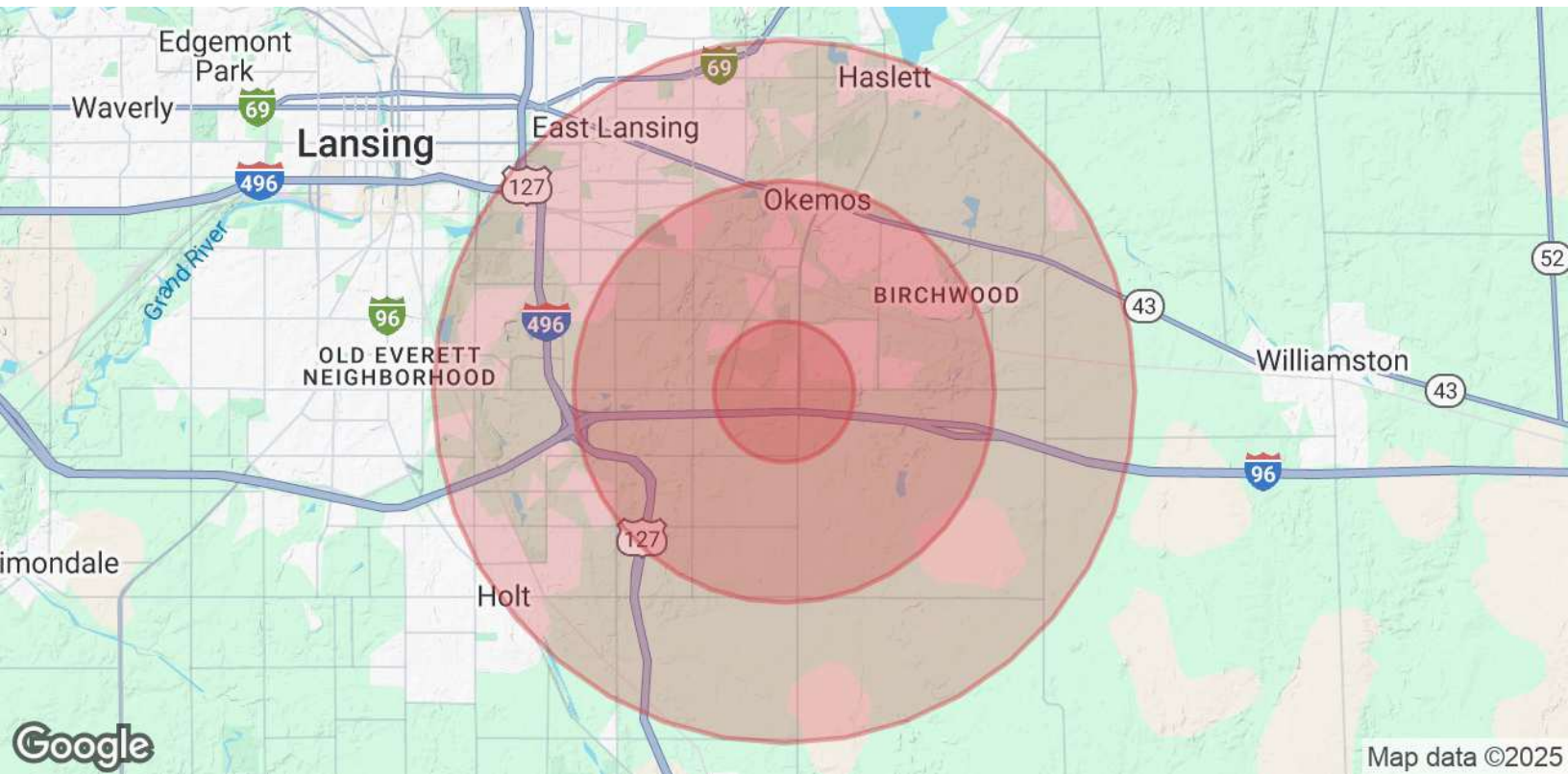
For More Information

Steve Slater

O: 517 487 9222 | C: 517 749 7914
steveslater@naimidmichigan.com







Population	1 Mile	3 Miles	5 Miles
Total Population	4,754	22,827	94,897
Average Age	38	39	34
Average Age (Male)	38	38	34
Average Age (Female)	38	40	35
Households & Income	1 Mile	3 Miles	5 Miles
Total Households	1,839	9,093	35,037
# of Persons per HH	2.6	2.5	2.7
Average HH Income	\$132,557	\$131,321	\$94,029
Average House Value	\$404,201	\$367,363	\$252,452

Demographics data derived from AlphaMap