

7590 DIXIE HIGHWAY
CLARKSTON, MICHIGAN

OFFICE FOR SALE
3,500 Square Feet Available



**SIGNATURE
ASSOCIATES**
KNOW SIGNATURE | KNOW RESULTS



PROPERTY FEATURES

- 3,500 square feet available
- Well-maintained office/medical building
- Situated on a 1-acre site along highly traveled Dixie Highway
- The property features a functional layout with multiple private offices/exam rooms, reception area, and a finished lower level
- Ideal for medical, professional office, wellness user, owner-users or investors
- Ample on-site parking and excellent visibility with easy access to I-75 and surrounding retail amenities
- Contact broker for more information



For more information, please contact:

MARVIN PETROUS
(248) 359 0647
mpetrous@signatureassociates.com

JEFF LEMANSKI
(248) 359 0641
jlemanski@signatureassociates.com

SIGNATURE ASSOCIATES
One Towne Square, Suite 1200
Southfield, MI 48076
www.signatureassociates.com

7590 Dixie Highway – Clarkston, Michigan

Office For Sale

3,500
Square Feet
AVAILABLE

Interior Photos



For more information, please contact:

MARVIN PETROUS
(248) 359 0647
mpetrous@signatureassociates.com

JEFF LEMANSKI
(248) 359 0641
jlemanski@signatureassociates.com

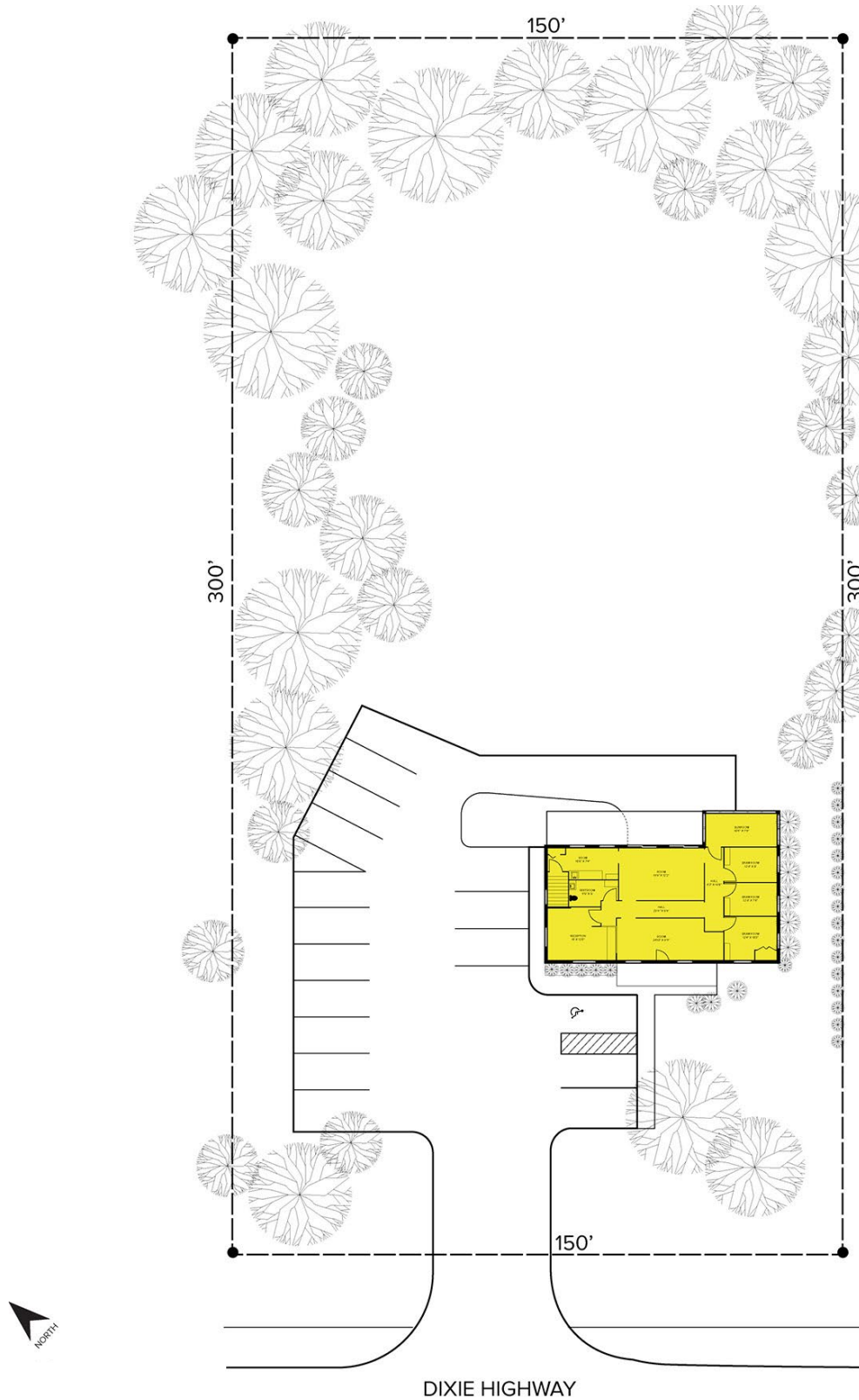
SIGNATURE ASSOCIATES
One Towne Square, Suite 1200
Southfield, MI 48076
www.signatureassociates.com

7590 Dixie Highway – Clarkston, Michigan

Office For Sale

3,500
Square Feet
AVAILABLE

Site Plan



For more information, please contact:

MARVIN PETROUS
(248) 359 0647
mpetrous@signatureassociates.com

JEFF LEMANSKI
(248) 359 0641
jlemanski@signatureassociates.com

SIGNATURE ASSOCIATES
One Towne Square, Suite 1200
Southfield, MI 48076
www.signatureassociates.com

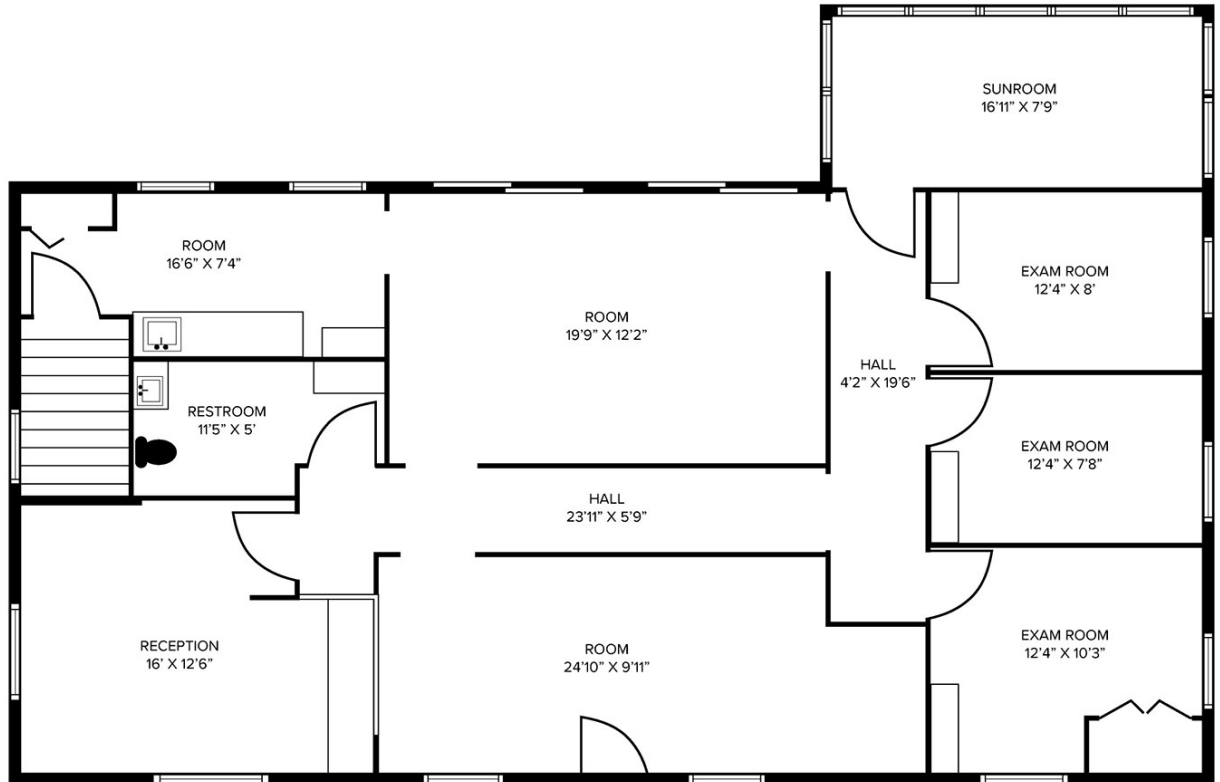
7590 Dixie Highway – Clarkston, Michigan

Office For Sale

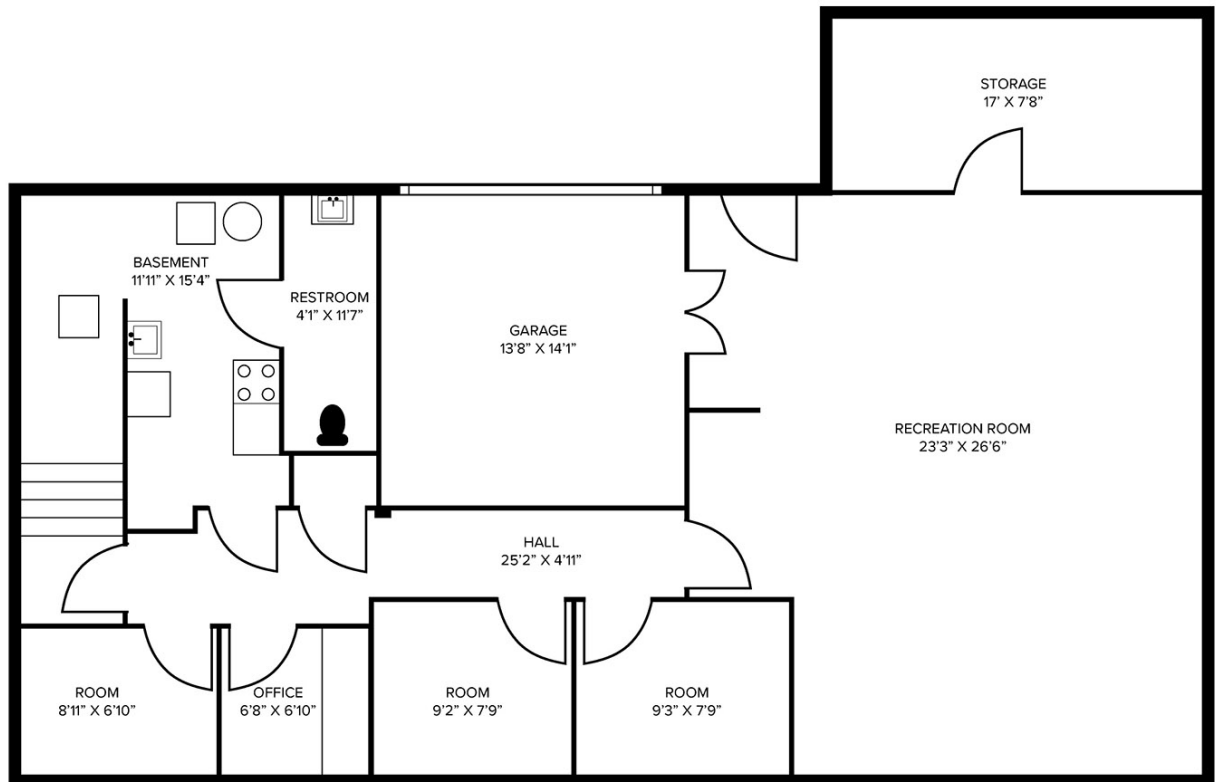
3,500
Square Feet
AVAILABLE

Floor Plan

MAIN FLOOR



LOWER LEVEL



For more information, please contact:

MARVIN PETROUS
(248) 359 0647
mpetrous@signatureassociates.com

JEFF LEMANSKI
(248) 359 0641
jlemanski@signatureassociates.com

SIGNATURE ASSOCIATES
One Towne Square, Suite 1200
Southfield, MI 48076
www.signatureassociates.com

7590 Dixie Highway – Clarkston, Michigan

Office For Sale

3,500
Square Feet
AVAILABLE

Aerial



For more information, please contact:

MARVIN PETROUS
(248) 359 0647
mpetrous@signatureassociates.com

JEFF LEMANSKI
(248) 359 0641
jlemanski@signatureassociates.com

SIGNATURE ASSOCIATES
One Towne Square, Suite 1200
Southfield, MI 48076
www.signatureassociates.com

Information is subject to verification and no liability for errors or omissions is assumed. Price is subject to change and listing withdrawal.