

# Office / Service Building

6111 Jackson Road, Ann Arbor, MI 48103



## FOR LEASE



### OFFERING SUMMARY

Lease Rate:	\$14.75 SF/yr Plus Utilities
Available SF:	2,560 SF
Zoning:	General Commercial District (C-2)

### DEMOGRAPHICS

	1 MILE	3 MILES	5 MILES
Total Households	1,963	6,358	29,179
Total Population	4,953	16,428	68,238
Average HH Income	\$136,317	\$156,645	\$152,748

### PROPERTY HIGHLIGHTS

- 2,560 SF professional office/service suite
- Five private offices with windows
- Conference room
- Open bullpen area
- Kitchenette
- Ample surface parking
- Located in Scio Township - Jackson Road Technology Park
- High-traffic corridor between Zeeb Road and Baker Road
- Across from Lowe's and surrounded by retail, dining, and service amenities
- 1 minute to I-94 via Zeeb Road interchange
- Quick access to US-23 and M-14
- Zoned General Commercial District (C-2)

#### Jeff Evans

734.926.0222

jeffevans@swishercommercial.com

#### Charlie Koenn

734.926.0230

ckoenn@swishercommercial.com



# Office / Service Building

6111 Jackson Road, Ann Arbor, MI 48103



For Lease



**Jeff Evans**

734.926.0222

jeffevans@swishercommercial.com

**Charlie Koenn**

734.926.0230

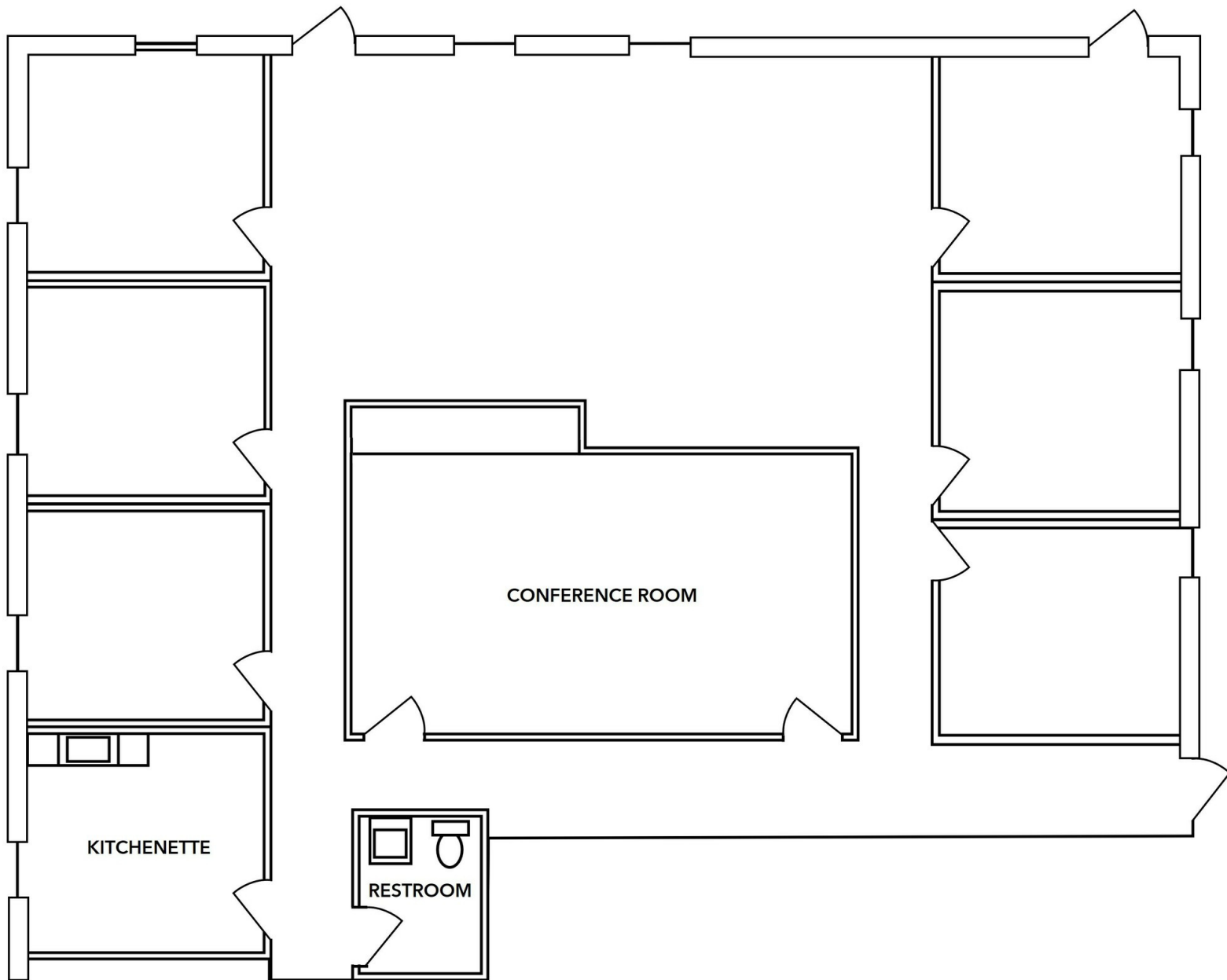
ckoenn@swishercommercial.com

# Office / Service Building

6111 Jackson Road, Ann Arbor, MI 48103



For Lease



**Jeff Evans**

734.926.0222

jeffevans@swishercommercial.com

**Charlie Koenn**

734.926.0230

ckoenn@swishercommercial.com

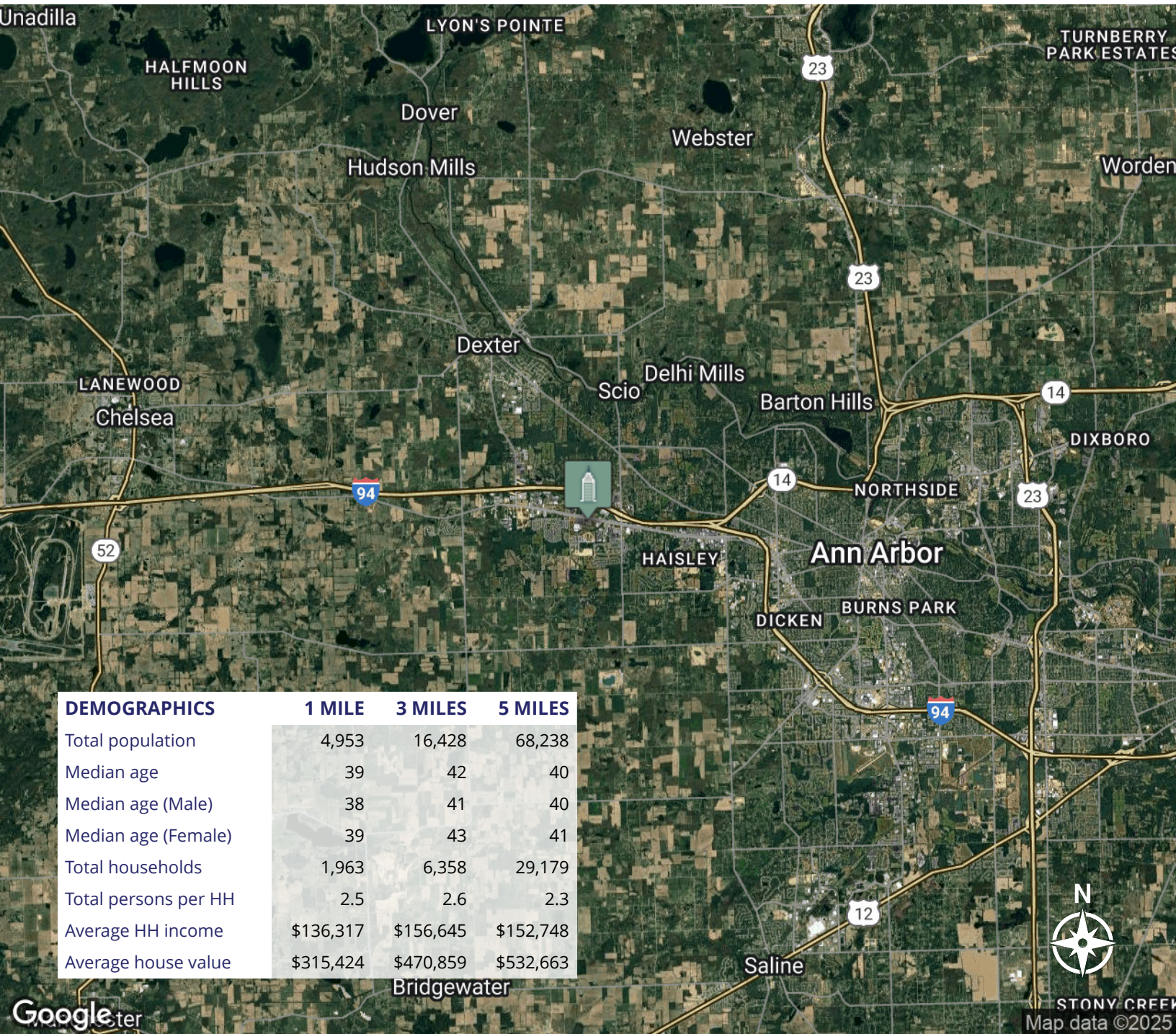


# Office / Service Building

6111 Jackson Road, Ann Arbor, MI 48103



For Lease



**Jeff Evans**

734.926.0222

jeffevans@swishercommercial.com

**Charlie Koenn**

734.926.0230

ckoenn@swishercommercial.com