

23501 MOUND ROAD  
WARREN, MICHIGAN

INDUSTRIAL FOR LEASE  
17,000 Square Feet Available



**SIGNATURE  
ASSOCIATES**  
KNOW SIGNATURE | KNOW RESULTS



## PROPERTY FEATURES

- 17,000 square feet available
- 2,800 square feet office
- 14' – 24' clear height
- (2) 12' x 14', 16' x 16' grade level doors
- (1) 10-ton crane, 16' underhook
- 2000 amps, 240 volts, heavy power, buss duct, air lines
- New ownership, ready for tenant
- Great visibility and ample parking
- Fenced in lot
- Lease Rate: \$7.95/sq. ft. NNN



For more information, please contact:

**PETER VANDERKAAY**  
(248) 359 3837

[pvanderkaay@signatureassociates.com](mailto:pvanderkaay@signatureassociates.com)

**MARVIN PETROUS**  
(248) 359 0647

[mpetrous@signatureassociates.com](mailto:mpetrous@signatureassociates.com)

**SIGNATURE ASSOCIATES**  
One Towne Square, Suite 1200  
Southfield, MI 48076  
[www.signatureassociates.com](http://www.signatureassociates.com)

Information is subject to verification and no liability for errors or omissions is assumed. Price is subject to change and listing withdrawal.

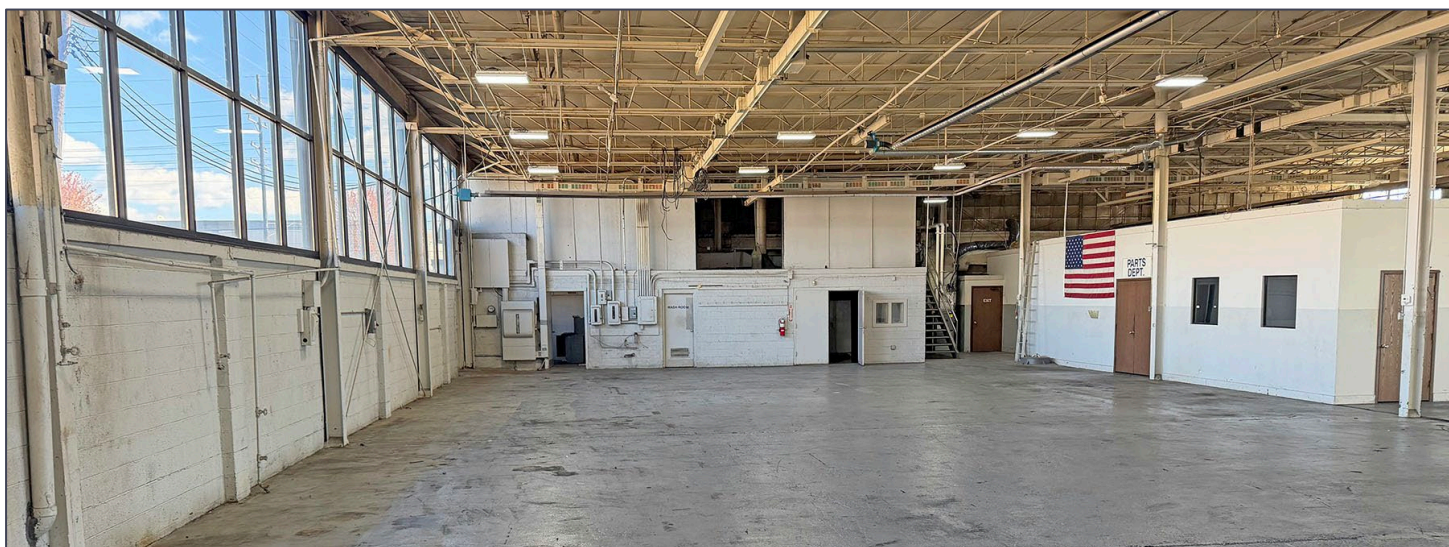
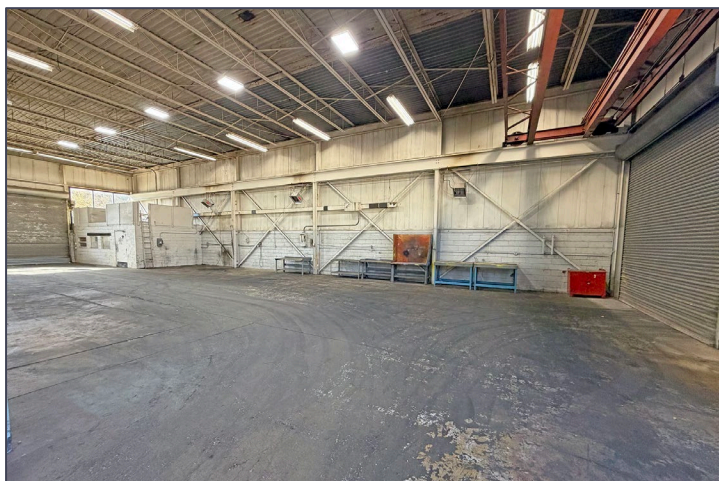
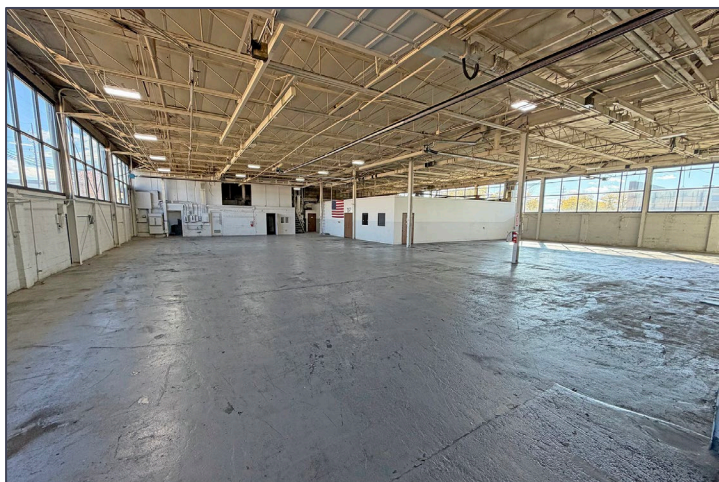


# 23501 Mound Road – Warren, Michigan

## Industrial For Lease

17,000  
Square Feet  
AVAILABLE

### Interior Photos



For more information, please contact:

**PETER VANDERKAAY**  
(248) 359 3837

[pvanderkaay@signatureassociates.com](mailto:pvanderkaay@signatureassociates.com)

**MARVIN PETROUS**  
(248) 359 0647

[mpetrous@signatureassociates.com](mailto:mpetrous@signatureassociates.com)

**SIGNATURE ASSOCIATES**  
One Towne Square, Suite 1200  
Southfield, MI 48076  
[www.signatureassociates.com](http://www.signatureassociates.com)

Information is subject to verification and no liability for errors or omissions is assumed. Price is subject to change and listing withdrawal.

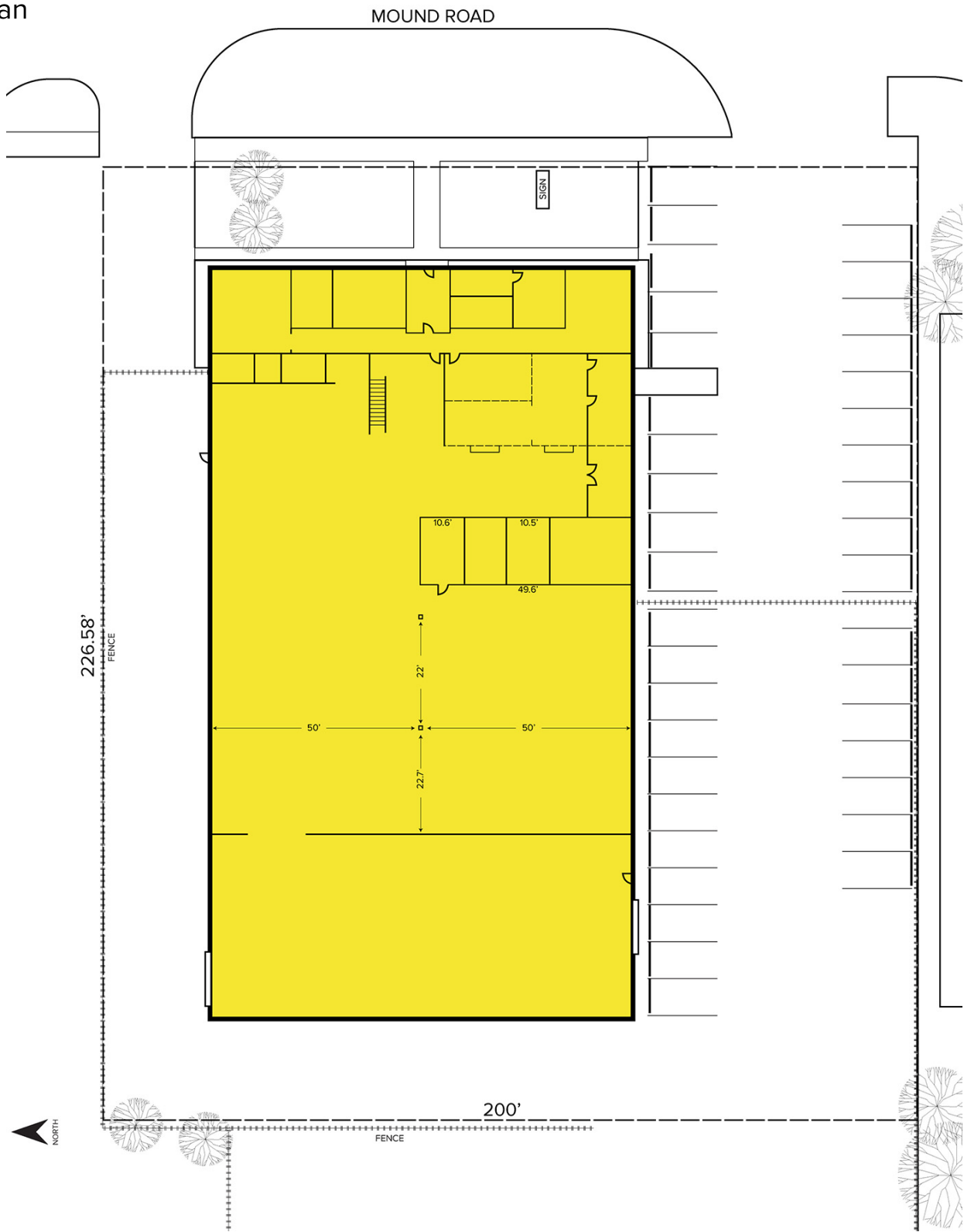


# 23501 Mound Road – Warren, Michigan

Industrial For Lease

17,000  
Square Feet  
AVAILABLE

## Site Plan



For more information, please contact:

**PETER VANDERKAAY**  
(248) 359 3837  
pvanderkaay@signatureassociates.com

**MARVIN PETROUS**  
(248) 359 0647  
mpetrous@signatureassociates.com

**SIGNATURE ASSOCIATES**  
One Towne Square, Suite 1200  
Southfield, MI 48076  
www.signatureassociates.com

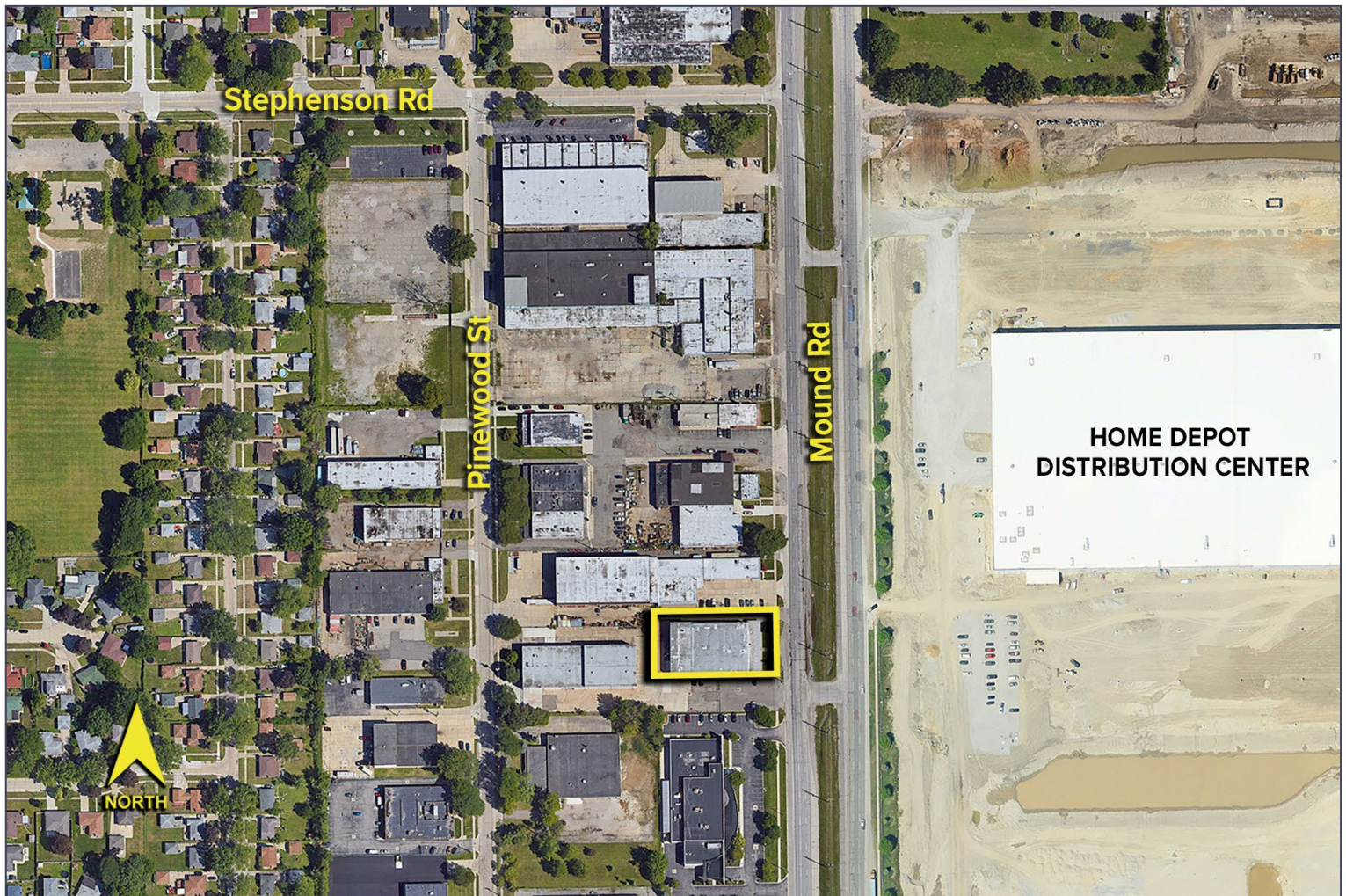
Information is subject to verification and no liability for errors or omissions is assumed. Price is subject to change and listing withdrawal.

# 23501 Mound Road – Warren, Michigan

## Industrial For Lease

17,000  
Square Feet  
AVAILABLE

Aerial



For more information, please contact:

**PETER VANDERKAAY**

(248) 359 3837

[pvanderkaay@signatureassociates.com](mailto:pvanderkaay@signatureassociates.com)

**MARVIN PETROUS**

(248) 359 0647

[mpetrous@signatureassociates.com](mailto:mpetrous@signatureassociates.com)

**SIGNATURE ASSOCIATES**

One Towne Square, Suite 1200

Southfield, MI 48076

[www.signatureassociates.com](http://www.signatureassociates.com)

Information is subject to verification and no liability for errors or omissions is assumed. Price is subject to change and listing withdrawal.