

23501 MOUND ROAD
WARREN, MICHIGAN

INDUSTRIAL FOR LEASE
17,000 Square Feet Available



**SIGNATURE
ASSOCIATES**
KNOW SIGNATURE | KNOW RESULTS



PROPERTY FEATURES

- 17,000 square feet available
- 2,800 square feet office
- 14' – 24' clear height
- (2) 12' x 14', 16' x 16' grade level doors
- (1) 10-ton crane, 16' underhook
- 2000 amps, 240 volts, heavy power, buss duct, air lines
- New ownership, ready for tenant
- Great visibility and ample parking
- Fenced in lot
- Lease Rate: \$6.95/sq. ft. NNN



For more information, please contact:

PETER VANDERKAAY
(248) 359 3837
pvanderkaay@signatureassociates.com

MARVIN PETROUS
(248) 359 0647
mpetrous@signatureassociates.com

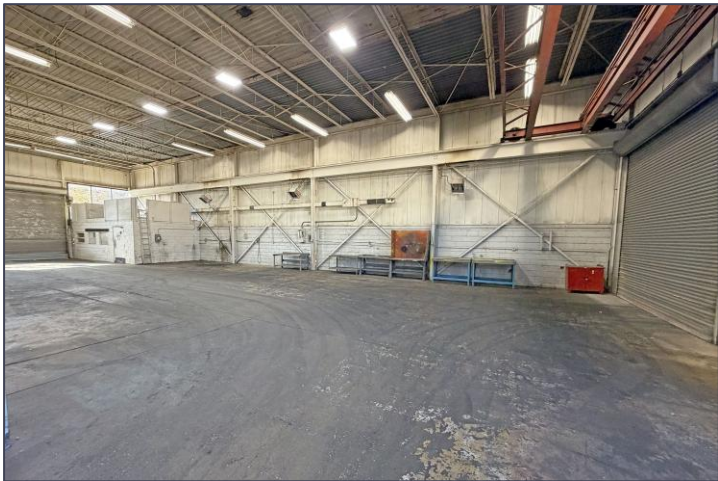
SIGNATURE ASSOCIATES
One Towne Square, Suite 1200
Southfield, MI 48076
www.signatureassociates.com

23501 Mound Road – Warren, Michigan

Industrial For Lease

17,000
Square Feet
AVAILABLE

Interior Photos



For more information, please contact:

PETER VANDERKAAY
(248) 359 3837
pvanderkaay@signatureassociates.com

MARVIN PETROUS
(248) 359 0647
mpetrous@signatureassociates.com

SIGNATURE ASSOCIATES
One Towne Square, Suite 1200
Southfield, MI 48076
www.signatureassociates.com

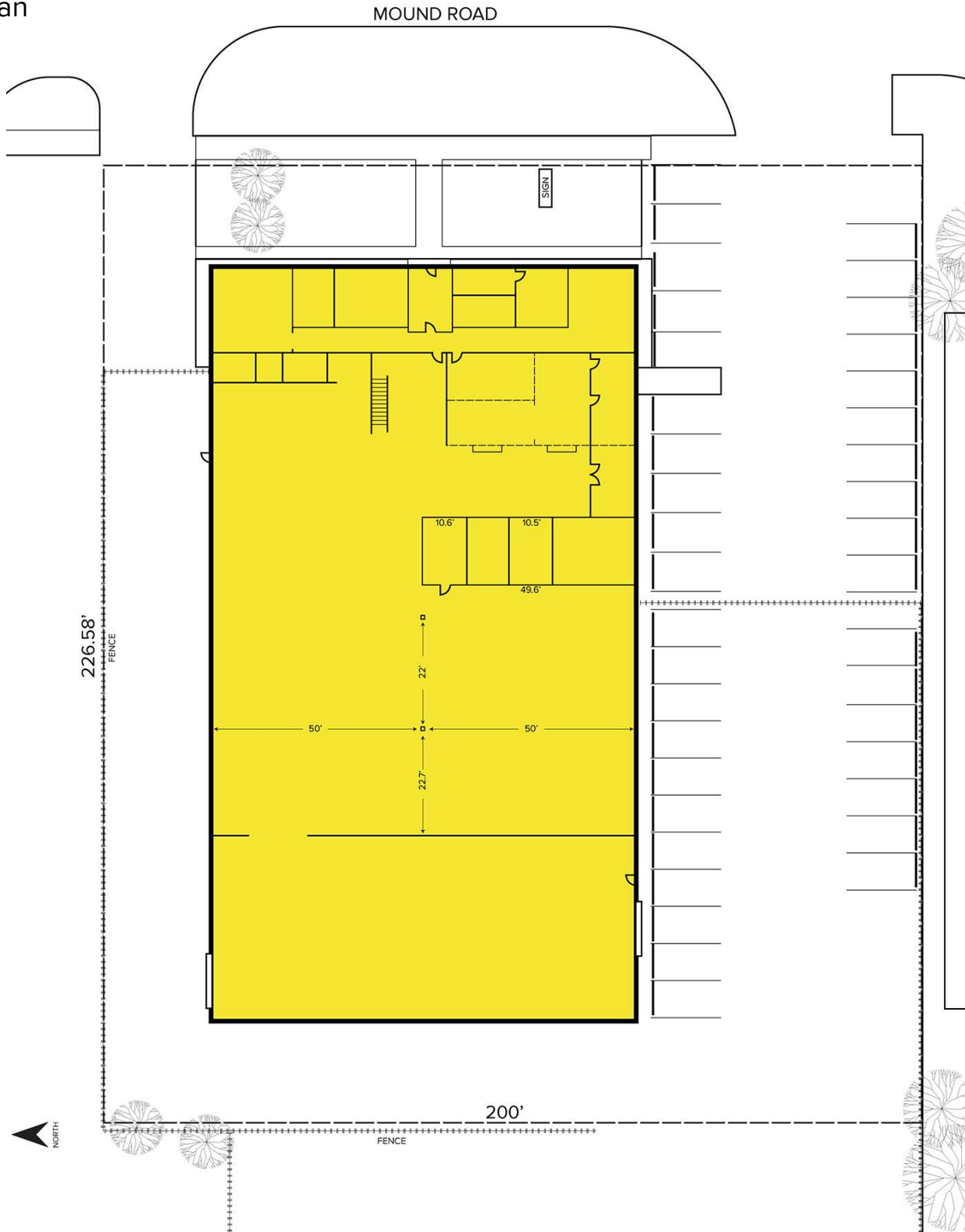
Information is subject to verification and no liability for errors or omissions is assumed. Price is subject to change and listing withdrawal.

23501 Mound Road – Warren, Michigan

Industrial For Lease

17,000
Square Feet
AVAILABLE

Site Plan



For more information, please contact:

PETER VANDERKAAY
(248) 359 3837

pvanderkaay@signatureassociates.com

MARVIN PETROUS
(248) 359 0647

mpetrous@signatureassociates.com

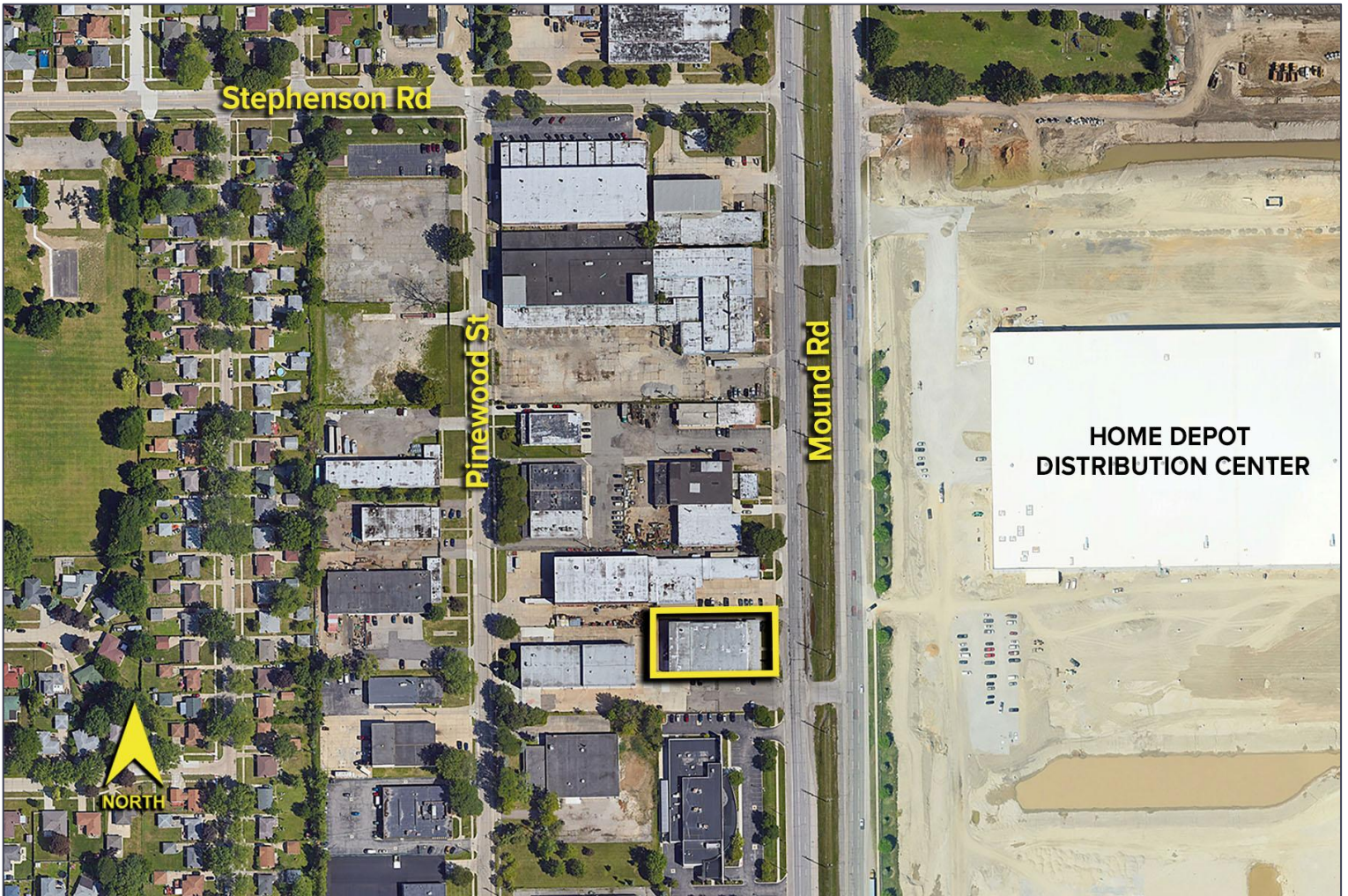
SIGNATURE ASSOCIATES
One Towne Square, Suite 1200
Southfield, MI 48076
www.signatureassociates.com

23501 Mound Road – Warren, Michigan

Industrial For Lease

17,000
Square Feet
AVAILABLE

Aerial



For more information, please contact:

PETER VANDERKAAY
(248) 359 3837

pvanderkaay@signatureassociates.com

MARVIN PETROUS
(248) 359 0647

mpetrous@signatureassociates.com

SIGNATURE ASSOCIATES
One Towne Square, Suite 1200
Southfield, MI 48076
www.signatureassociates.com