

# FOR LEASE

Colliers

810 Bellevue Street  
Leslie, MI

11,964 SF Space Available



**Shawn H. O'Brien, CCIM**

Senior Vice President

517 303 5554

[shawn.obrien@colliers.com](mailto:shawn.obrien@colliers.com)

**Colliers Lansing**

2501 Coolidge Rd., Suite 300

East Lansing, MI 48823

[Colliers.com/lansing](http://Colliers.com/lansing)





# PROPERTY HIGHLIGHTS

- Total Building Size: 27,365 SF
- Lot Size: 4.760Acres
- Available: Suite 814 with 11,964 SF
- Lease Rate: \$6.00/SF NNN
- Excellent Visibility: Located just off US-127
- Suitability: Supermarket or Similar Establishment
- Year Built: 1962
- Utilities: Municipal



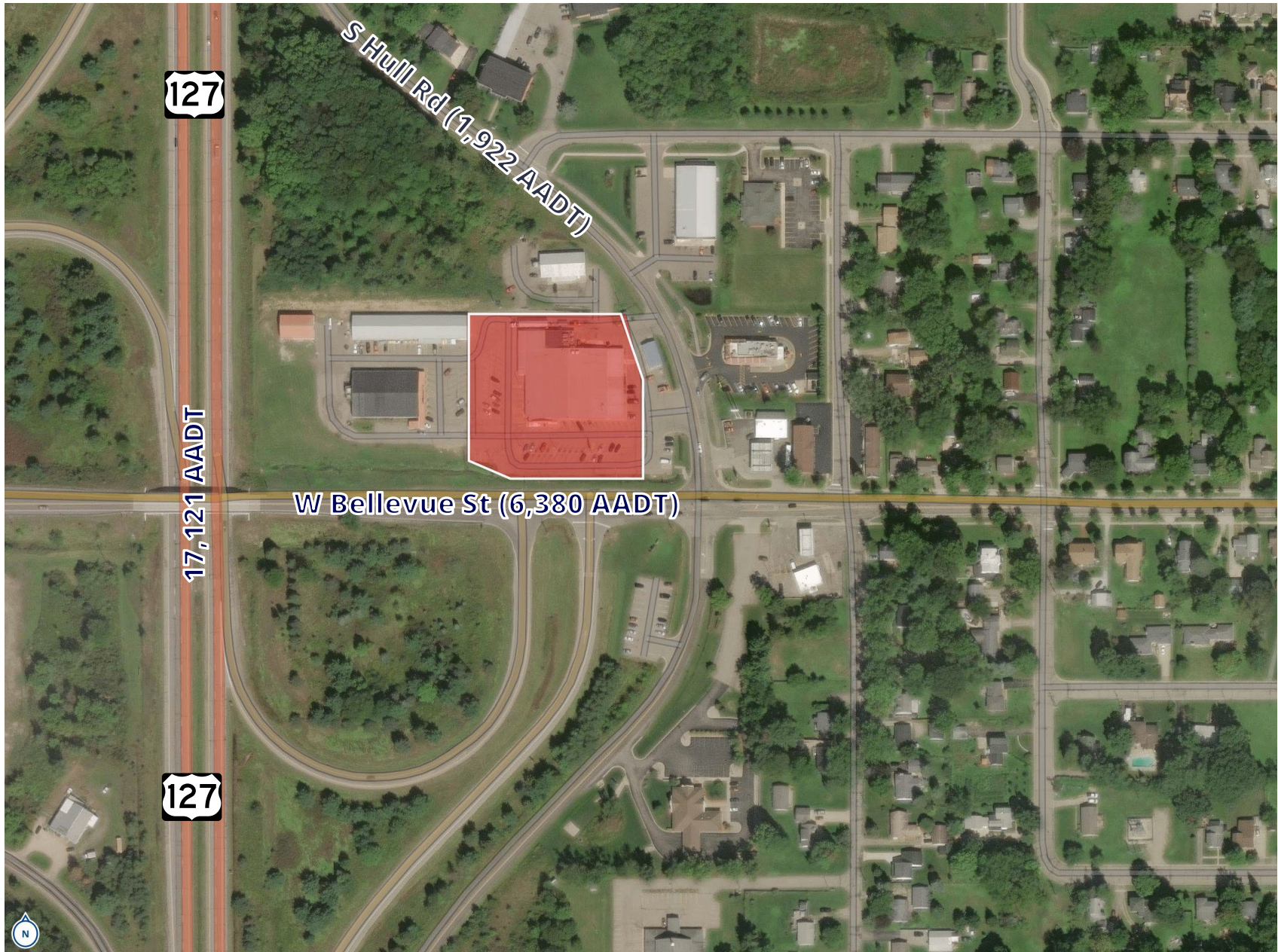
11,964 SF Commercial Space Available

# FLOOR PLAN

Self Storage



# AERIAL MAP

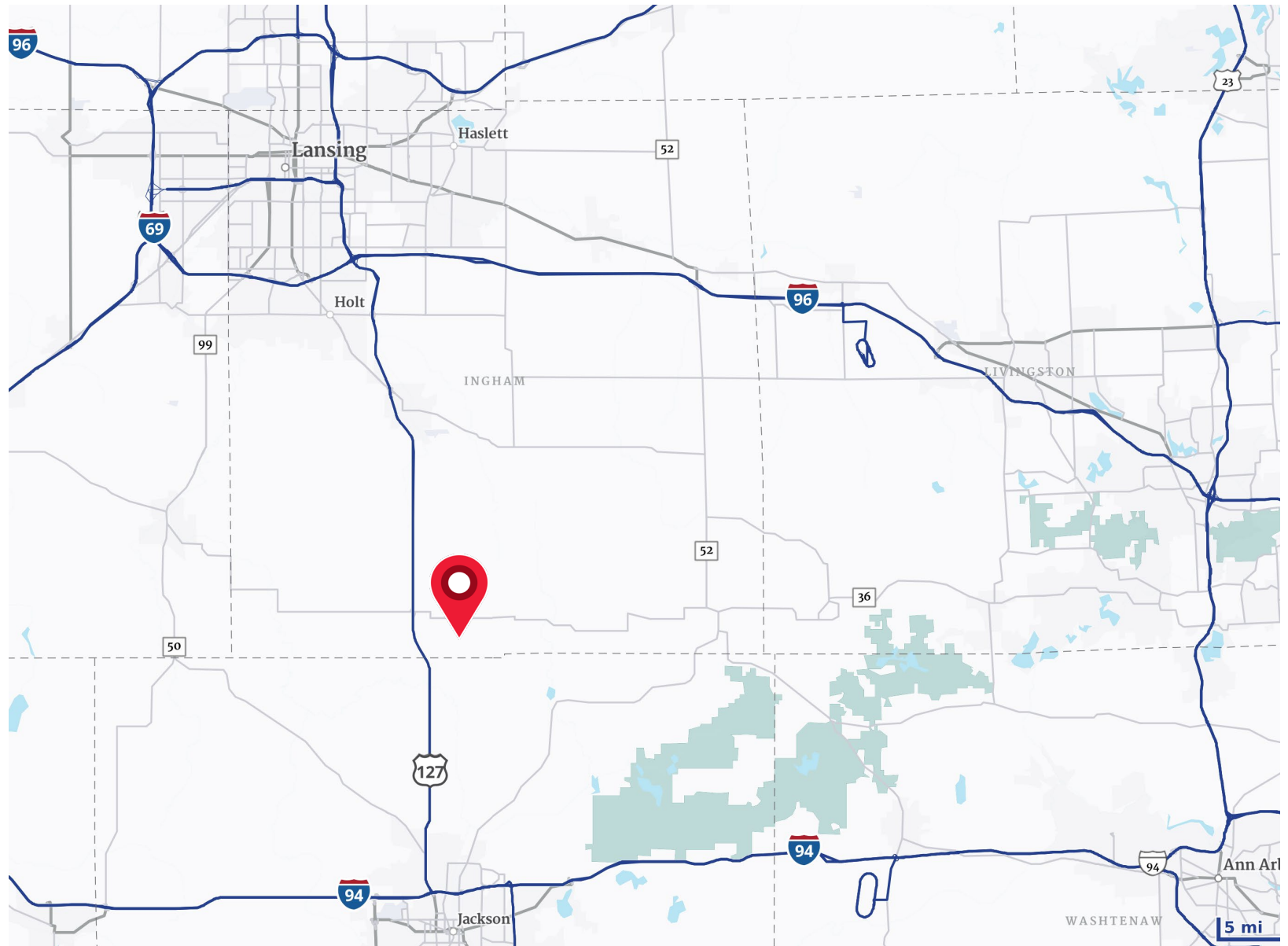


We have no reason to doubt the accuracy of information contained herein, but we cannot guarantee it. All information should be verified prior to purchase and/or lease.



11,964 SF Commercial Space Available

# LOCATION MAP



**Shawn H. O'Brien, CCIM**  
Senior Vice President  
517 303 5554  
shawn.obrien@colliers.com

**Colliers Lansing**  
2501 Coolidge Rd., Suite 300  
East Lansing, MI 48823  
Colliers.com/lansing



11,964 SF Commercial Space Available