

16940 JOY ROAD
DETROIT, MICHIGAN

RETAIL FOR SALE OR LEASE
10,000 Square Feet Available



**SIGNATURE
ASSOCIATES**
KNOW SIGNATURE | KNOW RESULTS



PROPERTY FEATURES

- 10,000 square feet available
- Very clean building
- Lends to many potential uses
- 18 parking spaces
- Lease Rate: \$10.00/sq. ft. NNN
- Sale Price: \$995,000 (\$99.50/sq. ft.)



For more information, please contact:

JOE STACK
(248) 359 0615
jstack@signatureassociates.com

CHRIS MONSOUR
(248) 948 0107
cmonsour@signatureassociates.com

SIGNATURE ASSOCIATES
One Towne Square, Suite 1200
Southfield, MI 48076
www.signatureassociates.com

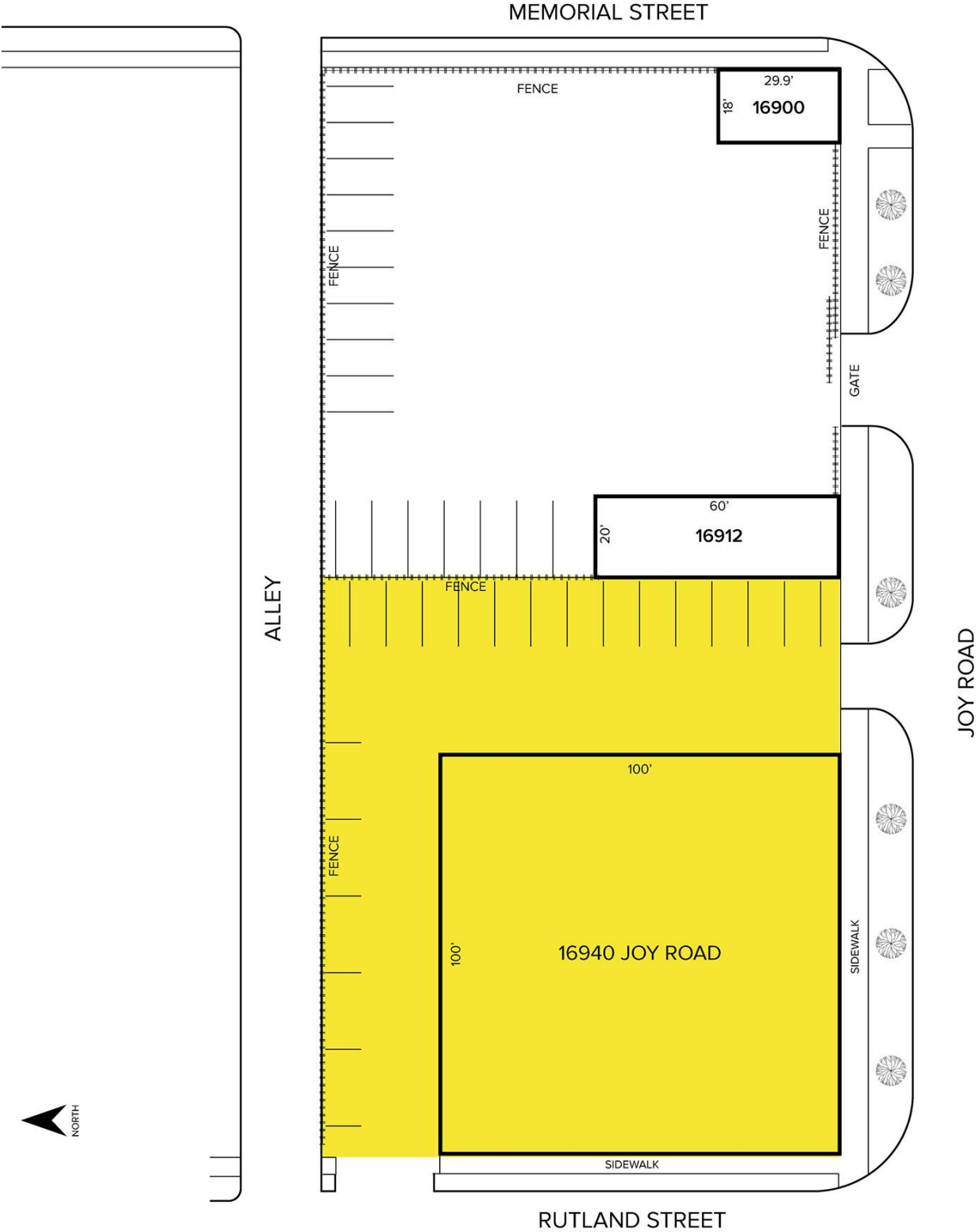
Information is subject to verification and no liability for errors or omissions is assumed. Price is subject to change and listing withdrawal.

16940 Joy Road – Detroit, Michigan

Retail For Sale or Lease

10,000
Square Feet
AVAILABLE

Site Plan



For more information, please contact:

JOE STACK
(248) 359 0615
jstack@signatureassociates.com

CHRIS MONSOUR
(248) 948 0107
cmonsour@signatureassociates.com

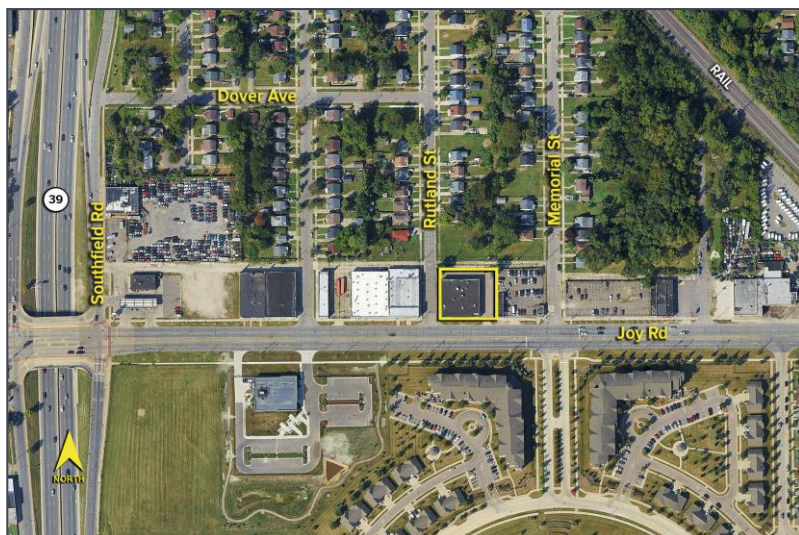
SIGNATURE ASSOCIATES
One Towne Square, Suite 1200
Southfield, MI 48076
www.signatureassociates.com

Information is subject to verification and no liability for errors or omissions is assumed. Price is subject to change and listing withdrawal.

16940 Joy Road – Detroit, Michigan

Retail For Sale or Lease

10,000
Square Feet
AVAILABLE

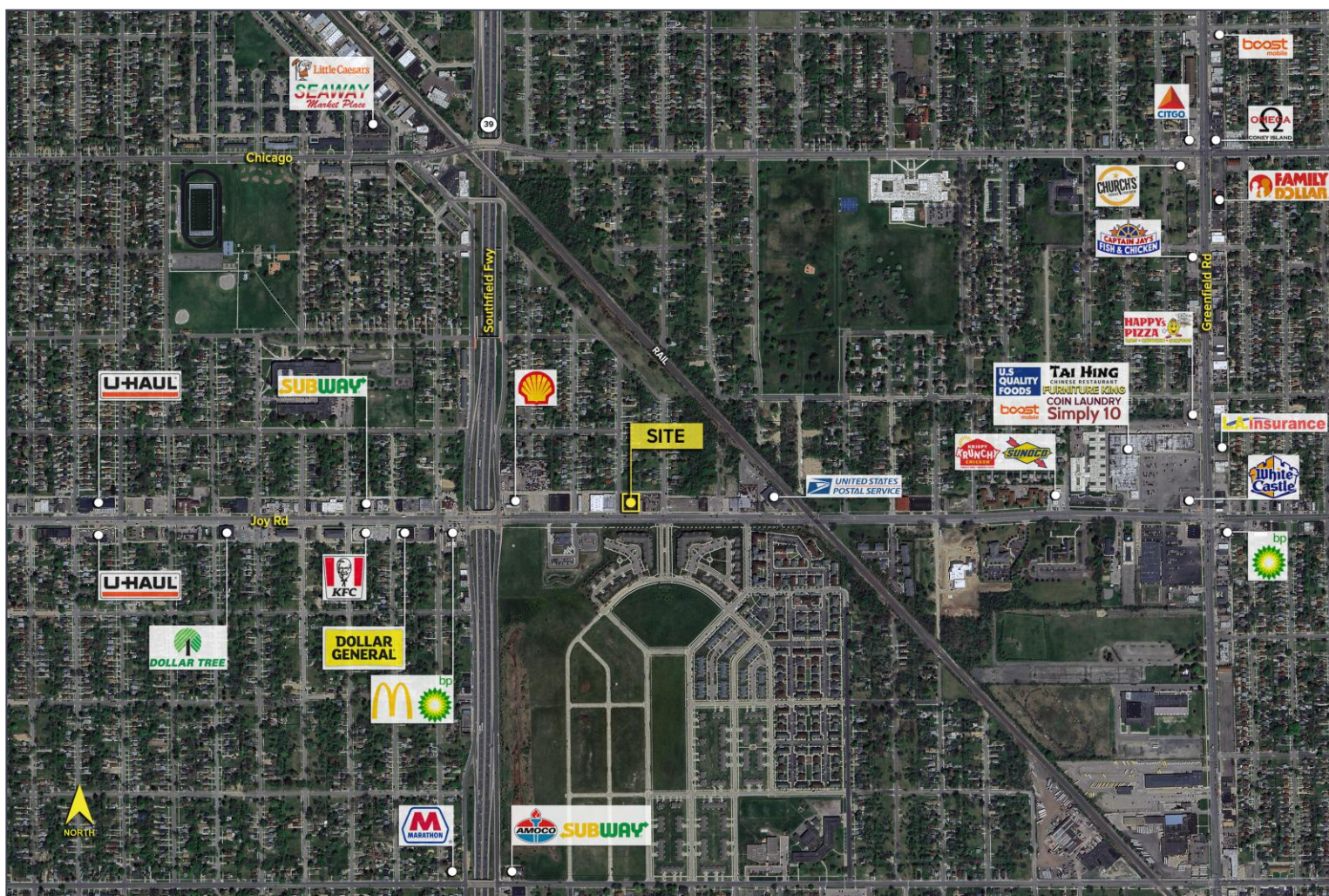


DEMOGRAPHICS

	POPULATION	MED. HH INCOME
1 MILE	19,033	\$34,657
3 MILE	160,111	\$43,320
5 MILE	384,559	\$49,871

TRAFFIC COUNTS (TWO-WAY)

12,661	Joy Rd. E of Southfield Fwy.
13,031	Joy Rd. W of Southfield Fwy.
139,775	Southfield Fwy. S of Joy Rd.
140,205	Southfield Fwy. N of Joy Rd.



For more information, please contact:

JOE STACK
(248) 359 0615
jstack@signatureassociates.com

CHRIS MONSOUR
(248) 948 0107
cmonsour@signatureassociates.com

SIGNATURE ASSOCIATES
One Towne Square, Suite 1200
Southfield, MI 48076
www.signatureassociates.com