

1251 N. MAIN STREET
ANN ARBOR, MICHIGAN

INDUSTRIAL FOR SALE
4,000 Square Feet Available



**SIGNATURE
ASSOCIATES**
KNOW SIGNATURE | KNOW RESULTS

SELF STORAGE DEVELOPMENT SITE



PROPERTY FEATURES

- By right – self storage development
- 4,000 square feet available
- 18' clear height
- (2) 12' x 10' grade level doors
- Seller to provide at exceptional contract
 - Survey
 - Environmental
- Located on 1.1 acres
- Auto Body Shop or redevelopment opportunity
- Zoned Fringe Commercial (C3)
- Sale Price: \$1,600,000 (\$400/sq. ft.)



For more information, please contact:

DRAKE FILIPPIS

(248) 799 3161

dfilippis@signatureassociates.com

JAY CHAVEY

(248) 948 4196

jchavey@signatureassociates.com

SIGNATURE ASSOCIATES

One Towne Square, Suite 1200

Southfield, MI 48076

www.signatureassociates.com

Information is subject to verification and no liability for errors or omissions is assumed. Price is subject to change and listing withdrawal.

1251 N. Main Street – Ann Arbor, Michigan

Industrial For Sale

4,000
Square Feet
AVAILABLE

Additional Photos



For more information, please contact:

DRAKE FILIPPIS

(248) 799 3161

dfilippis@signatureassociates.com

JAY CHAVEY

(248) 948 4196

jchavey@signatureassociates.com

SIGNATURE ASSOCIATES

One Towne Square, Suite 1200

Southfield, MI 48076

www.signatureassociates.com

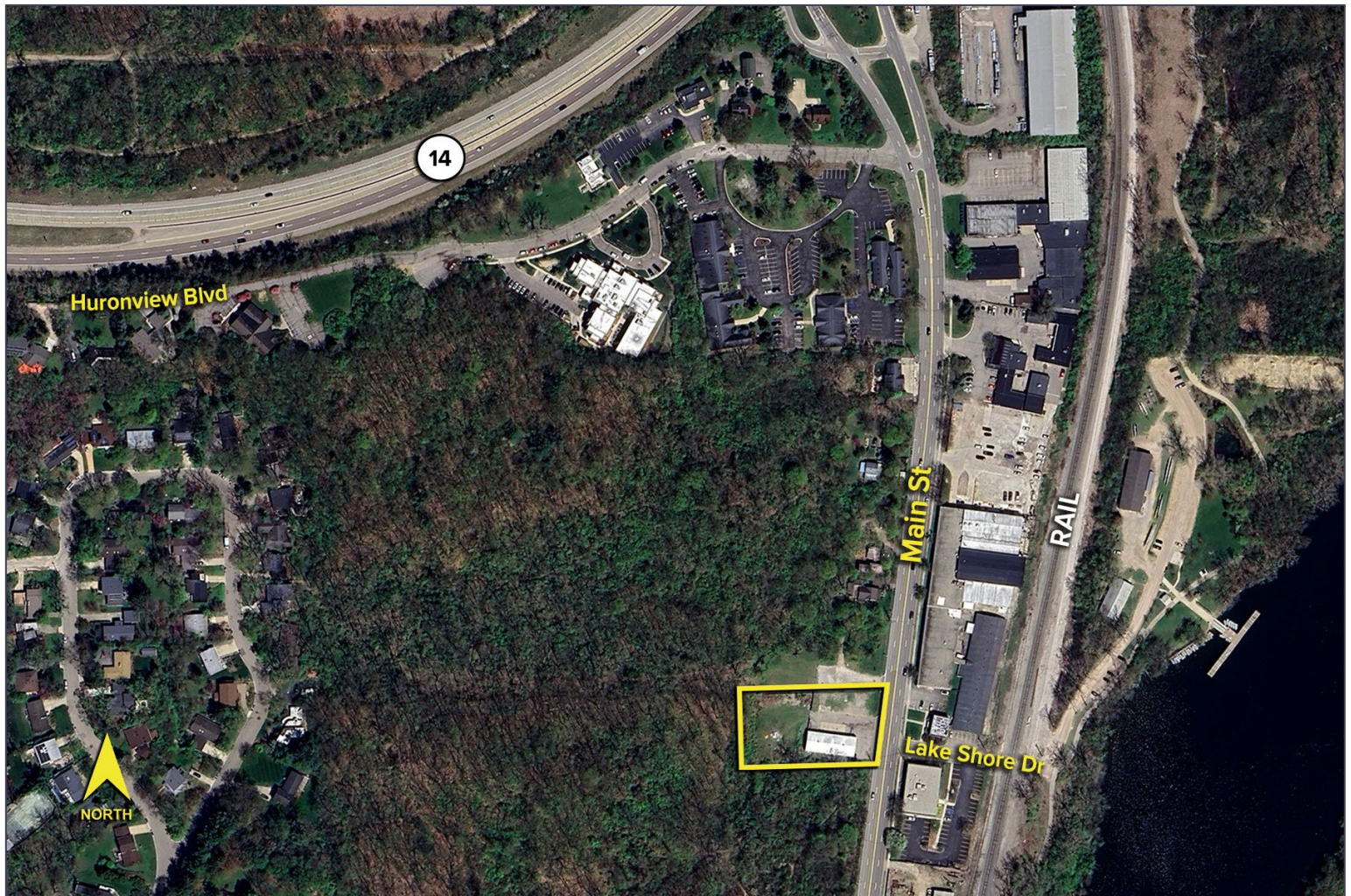
Information is subject to verification and no liability for errors or omissions is assumed. Price is subject to change and listing withdrawal.

1251 N. Main Street – Ann Arbor, Michigan

Industrial For Sale

4,000
Square Feet
AVAILABLE

Aerial



For more information, please contact:

DRAKE FILIPPIS

(248) 799 3161

dfilippis@signatureassociates.com

JAY CHAVEY

(248) 948 4196

jchavey@signatureassociates.com

SIGNATURE ASSOCIATES

One Towne Square, Suite 1200

Southfield, MI 48076

www.signatureassociates.com

Information is subject to verification and no liability for errors or omissions is assumed. Price is subject to change and listing withdrawal.