

HIGH EXPOSURE FLEX SPACE LOCATED ON AURELIUS RD. JUST NORTH OF MILLER RD.



FOR LEASE
5700 N. Aurelius Rd.
Lansing, MI

AVAILABLE:
2,600 SF
Flex Space

CHRISTOPHER MILLER, SIOR
Senior Vice President
Industrial & Investment Advisor
Direct: 517 319-9244
christopher.miller@martincommercial.com


Martin
1111 Michigan Ave., Ste 300
East Lansing, MI 48823
martincommercial.com

FLEX SPACE IN POPULAR INDUSTRIAL AREA

5700 N. Aurelius Road offers flex space with excellent visibility along Aurelius Road. The suite includes 960 SF of office or showroom space paired with 1,640 SF of heated warehouse area. The warehouse features 19' ceilings and a 14' overhead door that provides convenient truck access, making the space exceptionally functional for a variety of operational needs. This property is well-suited for contractors, suppliers, or businesses seeking a professional office environment combined with efficient small-scale storage or warehouse capability.

Tenants in the building include Century Glass, Seiler Geospatial, and Above The Roots Michigan, creating a professional atmosphere within a well-maintained and established complex. Located just north of Miller Road, the site sits within a hub of light manufacturers and industrial users. Its central position in Lansing and close proximity to Holt offer quick access to both I-96 and US-127, making it a strategic and convenient location for daily operations, distribution, and customer accessibility.

LEASE RATE:

\$10.50

PSF/YR, NNN



AVAILABLE:

Office:..... 960 SF
Warehouse: 1,640 SF
Total:..... 2,600 SF



CEILING HEIGHT:
19' 6" in Warehouse
8' in Office



LOADING DOOR:

14' Overhead Door

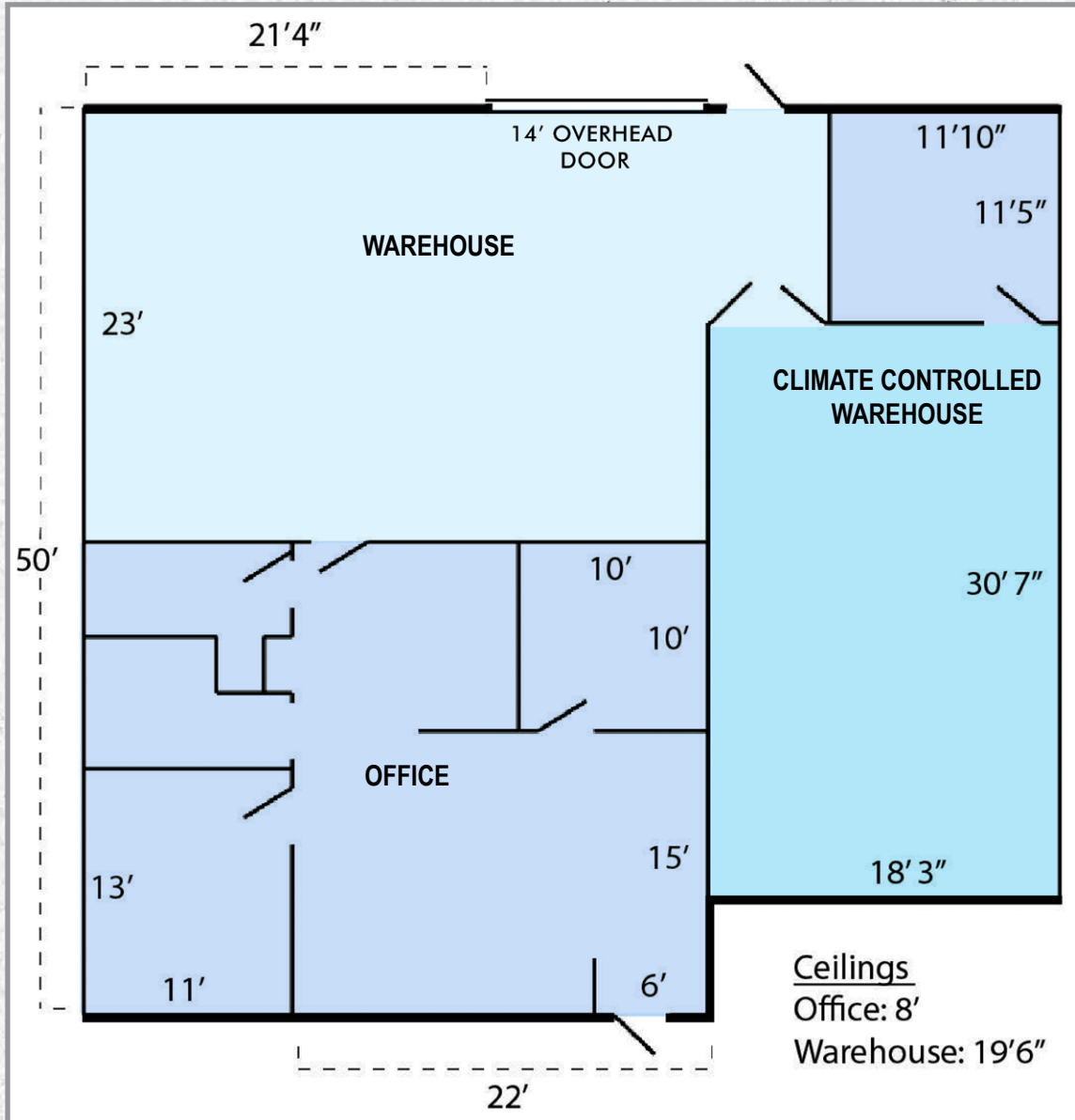


HVAC:
Heated Warehouse



© 2026 Martin Commercial Properties, Inc. All rights reserved. This information has been obtained from sources believed reliable but has not been verified for accuracy or completeness. You should conduct a careful, independent investigation of the property and verify all information. Any reliance on this information is solely at your own risk. Martin Commercial Properties and the Martin logo are service marks of Martin Commercial Properties, Inc. All other marks displayed on this document are the property of their respective owners. Photos herein are the property of their respective owners. Use of these images without the express written consent of the owner is prohibited.

FLOOR PLAN:



OFFICE

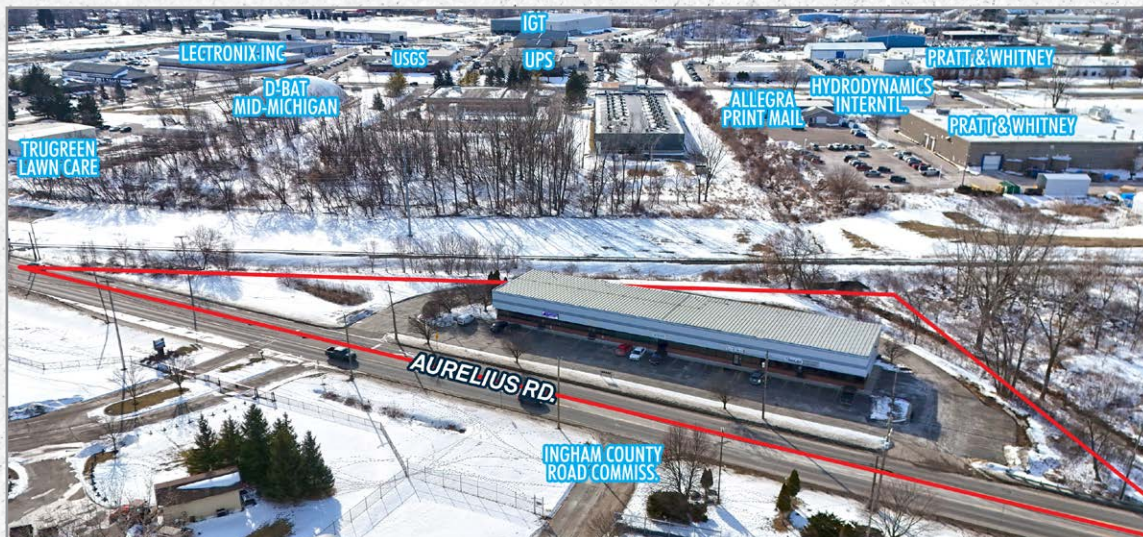
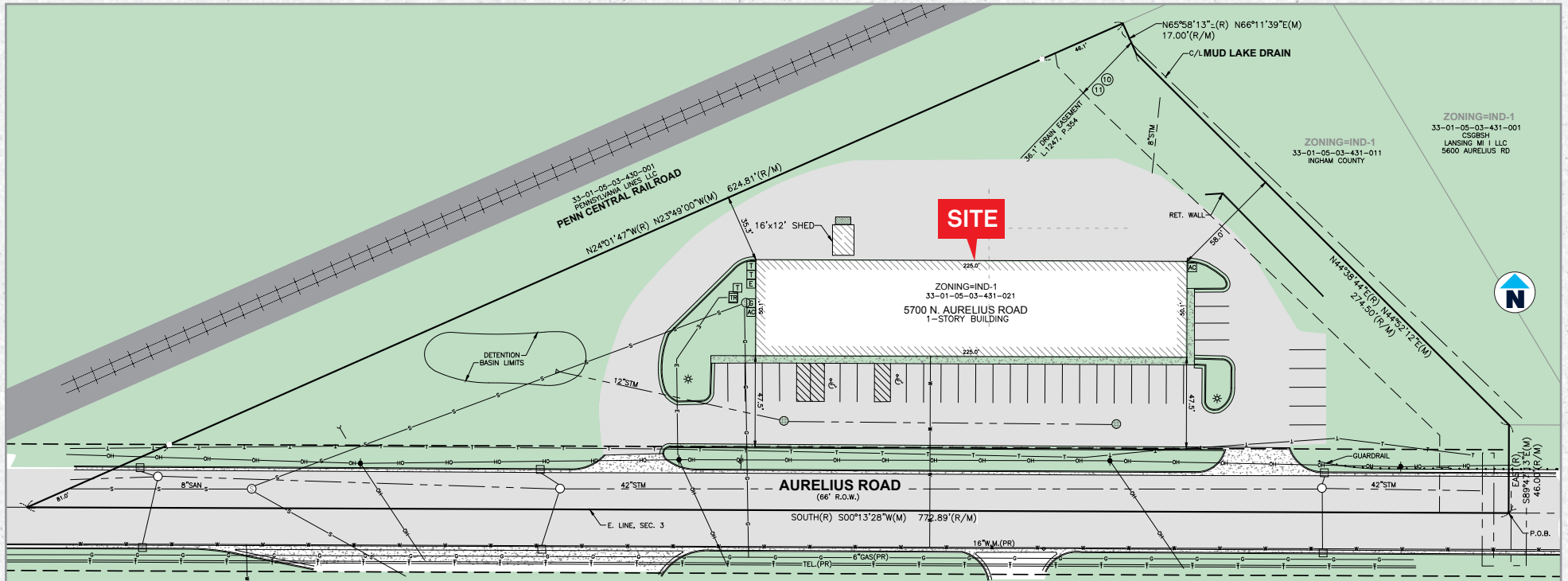


WAREHOUSE FINISHED



WAREHOUSE

SITE PLAN:



AREA INFORMATION

2 Minutes

to Barnes Aerospace, Dan Henry Distrib., Palmer Donovan, APCO, Pratt & Whitney, Lectronix and Two Men & A Truck

<1.4 Miles

to Cedar St./Holt I-96 interchange

<2 Miles

to Dunckel Rd./US-127 Interchange

10 Minutes

to Holt Industrial Centers: McKeeson, RSDC & Pratt & Whitney AutoAir

<12 Minutes

to Michigan State University

Convenient

to Interstates and Industrial Centers

