



Haslett Commerce Center

1630, 1640 & 1660 Haslett Rd
Haslett, Michigan 48840

Property Highlights

- 1640 - Suite 120 - 685 SF
- 1640 - Suite 140 - 1,060 SF
- Professionally managed
- On-site parking
- Clock tower landmark
- Located near Okemos and East Lansing
- Various sizes of office suites available

Offering Summary

Lease Rate:	\$15.00 SF/yr (MG)
Building Size:	12,000 SF
Available SF:	685 - 1,060 SF

For More Information



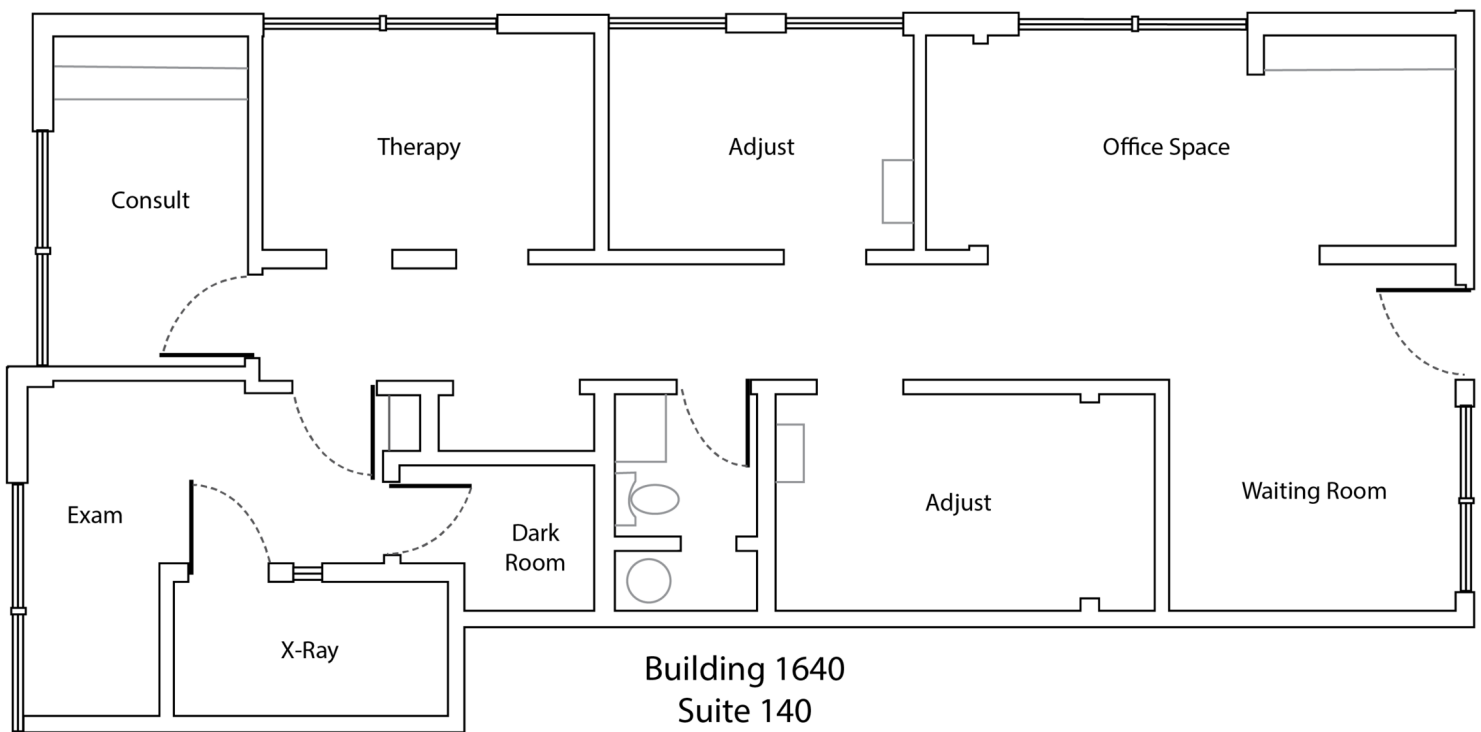
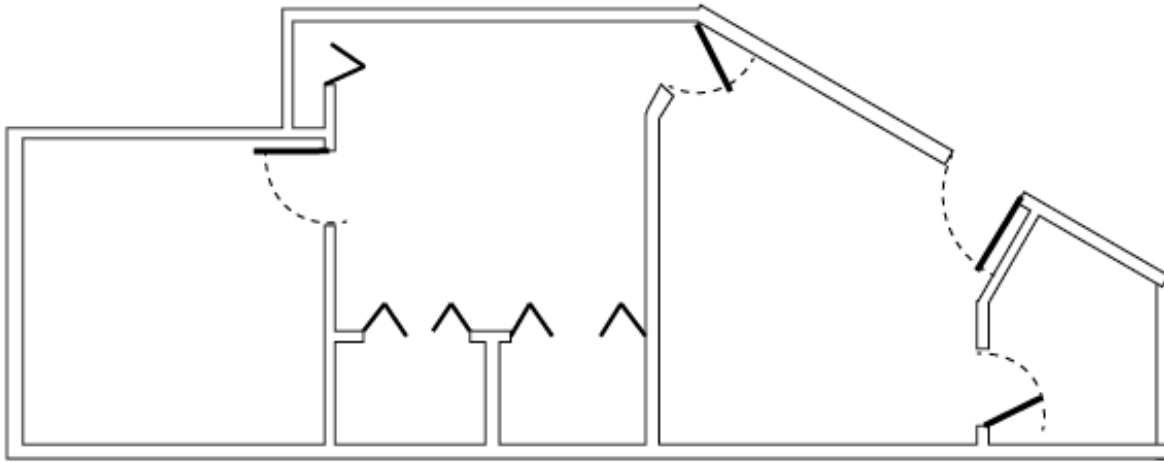
Steve Slater

Associate Broker

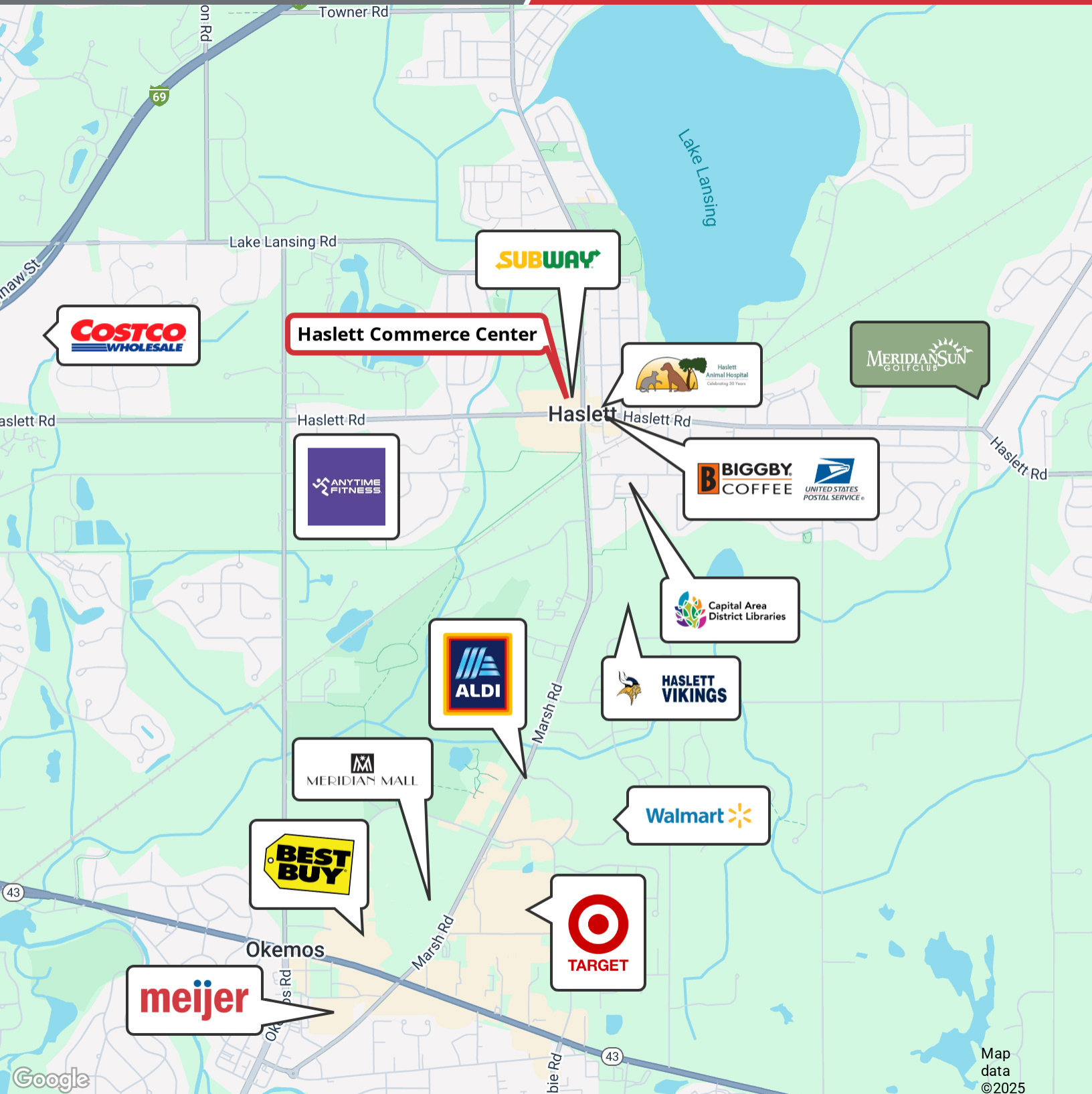
O: 517 487 9222 | C: 517 749 7914

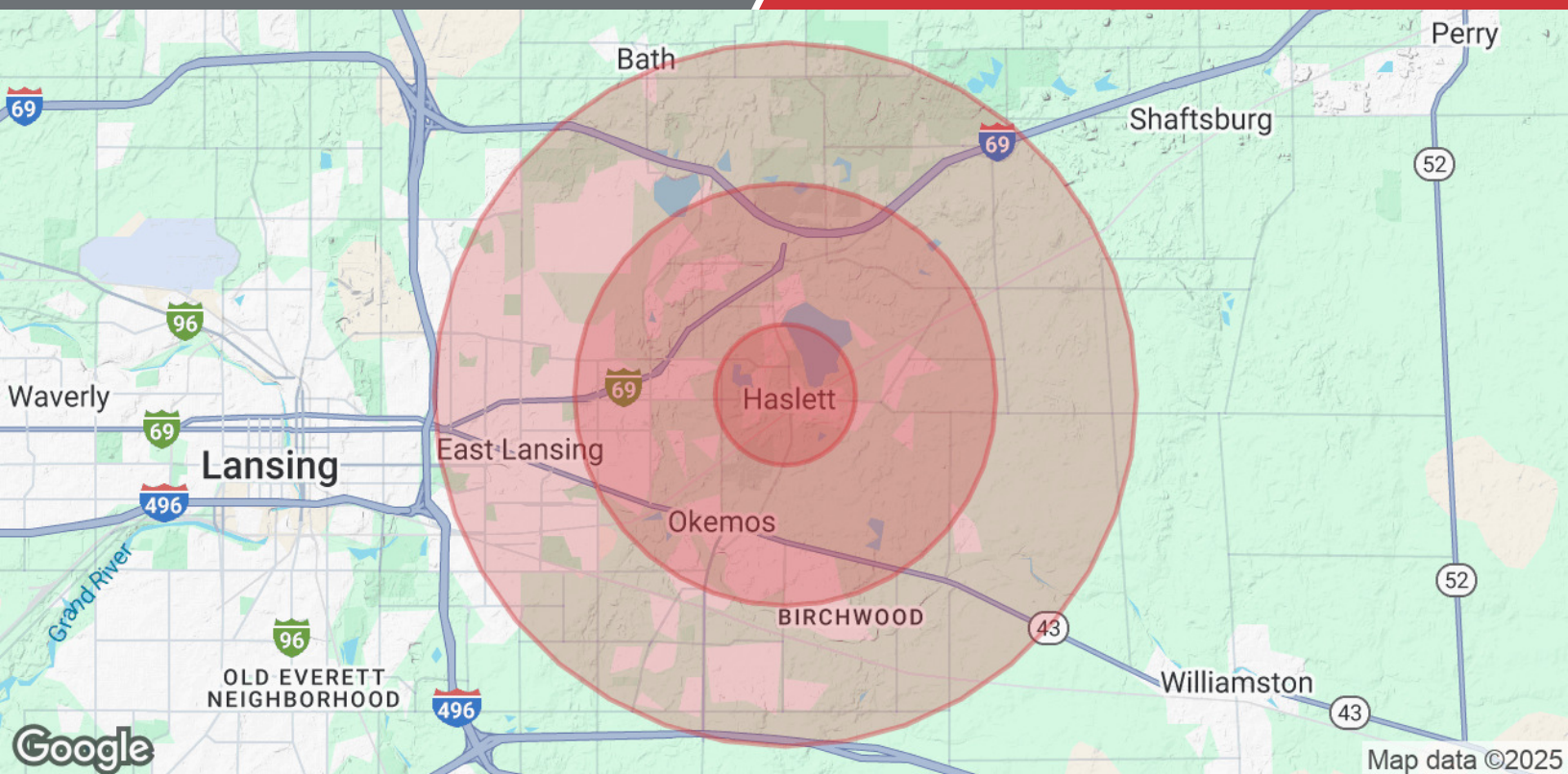
steveslater@naimidmichigan.com

1640 Haslett Rd
Suite 120
685 SF



Building 1640
Suite 140
1,060 SF





Population	1 Mile	3 Miles	5 Miles
Total Population	4,540	33,658	88,560
Average Age	39.8	39.3	34.0
Average Age (Male)	39.4	39.1	33.7
Average Age (Female)	39.9	39.6	34.5
Households & Income	1 Mile	3 Miles	5 Miles
Total Households	2,438	15,264	33,361
# of Persons per HH	1.9	2.2	2.7
Average HH Income	\$60,216	\$78,560	\$76,522
Average House Value	\$212,120	\$226,357	\$242,999

* Demographic data derived from 2020 ACS - US Census