

15041 S. COMMERCE DRIVE  
DEARBORN, MICHIGAN

## INDUSTRIAL FOR SALE OR LEASE

For Sale: 67,084 Square Feet

For Lease: 8,550 – 20,684 Square Feet

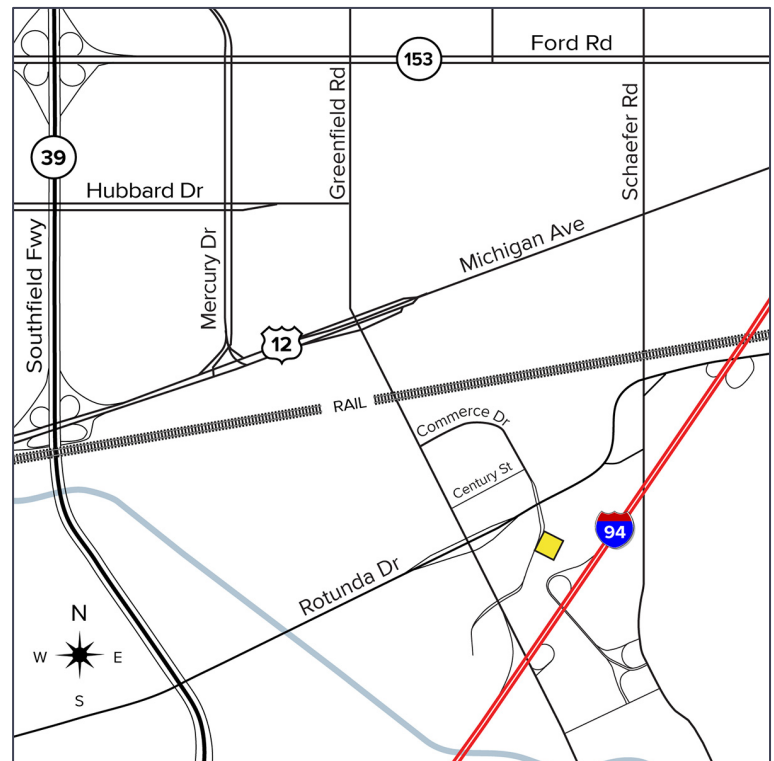


**SIGNATURE  
ASSOCIATES**  
KNOW SIGNATURE | KNOW RESULTS



## PROPERTY FEATURES

- 67,084 square feet available for sale
  - Unit 401: 11,884 square feet available for lease
  - Unit 405: 8,800 square feet available for lease
  - Unit 411: 8,550 square feet available for lease
- 100% office space
- 13' clear height
- Beautiful industrial building located in prestigious campus setting
- Zoned I-A, Light Industrial
- 375 parking spaces
- 100% air conditioned
- Located near I-94, Ford Rouge Plant, and Ford World HQ
- 1000 amps, 480 volts estimated power
- Lease Rate: \$9.00/sq. ft. NNN
- Sale possible



For more information, please contact:

**JACK TOWNSEND**

(248) 948 0115

[jtownsend@signatureassociates.com](mailto:jtownsend@signatureassociates.com)

**CHRIS SECONTINE**

(248) 799 3174

[csecontine@signatureassociates.com](mailto:csecontine@signatureassociates.com)

**SIGNATURE ASSOCIATES**

One Towne Square, Suite 1200

Southfield, MI 48076

[www.signatureassociates.com](http://www.signatureassociates.com)

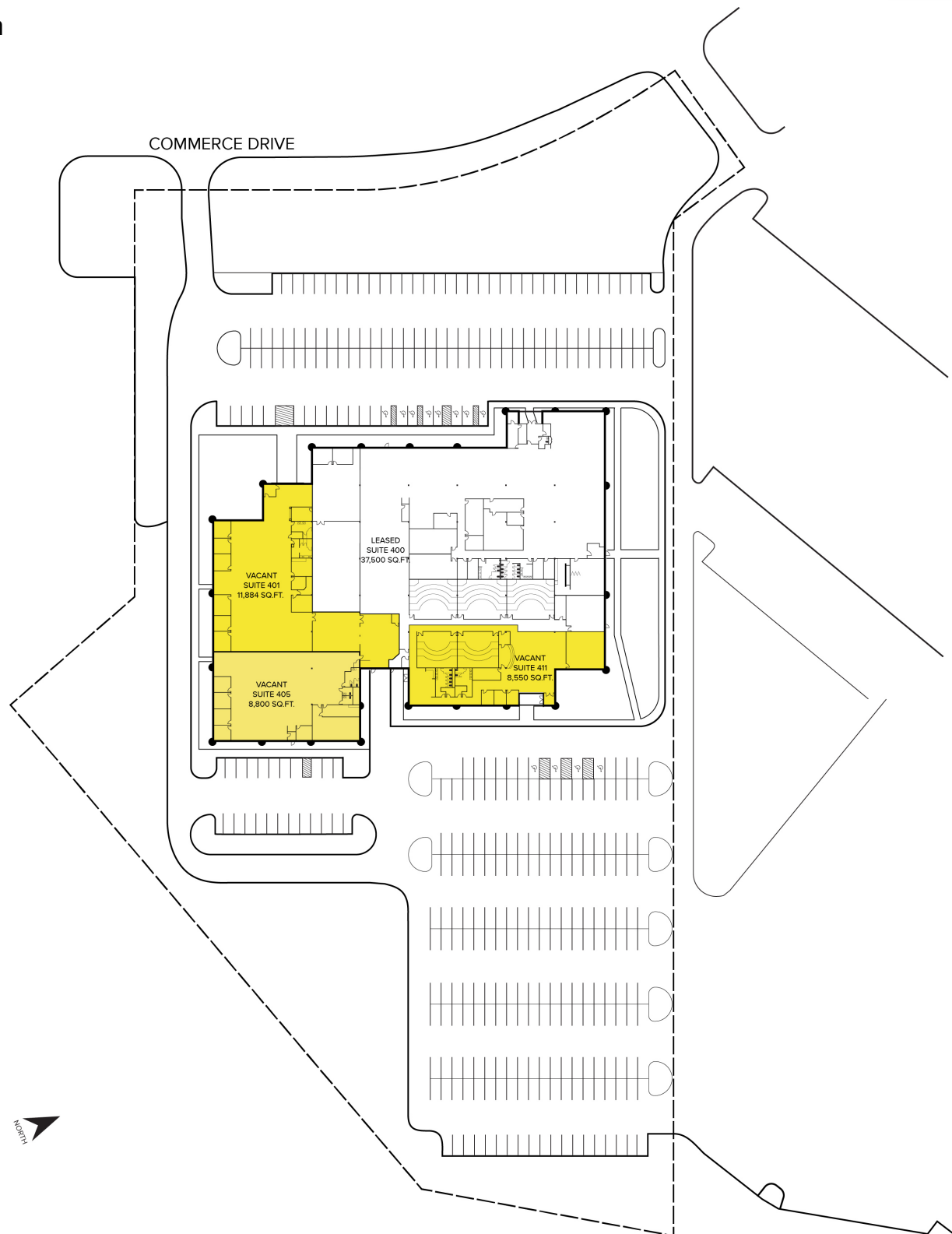
# 15041 S. Commerce Street – Dearborn, Michigan

## Industrial For Sale or Lease

For Lease –  
8,550 – 20,684 SF

For Sale –  
65,850 SF

### Site Plan



For more information, please contact:

**JACK TOWNSEND**

(248) 948 0115

[jtownsend@signatureassociates.com](mailto:jtownsend@signatureassociates.com)

**CHRIS SECONTINE**

(248) 799 3174

[csecontine@signatureassociates.com](mailto:csecontine@signatureassociates.com)

**SIGNATURE ASSOCIATES**

One Towne Square, Suite 1200

Southfield, MI 48076

[www.signatureassociates.com](http://www.signatureassociates.com)

Information is subject to verification and no liability for errors or omissions is assumed. Price is subject to change and listing withdrawal.

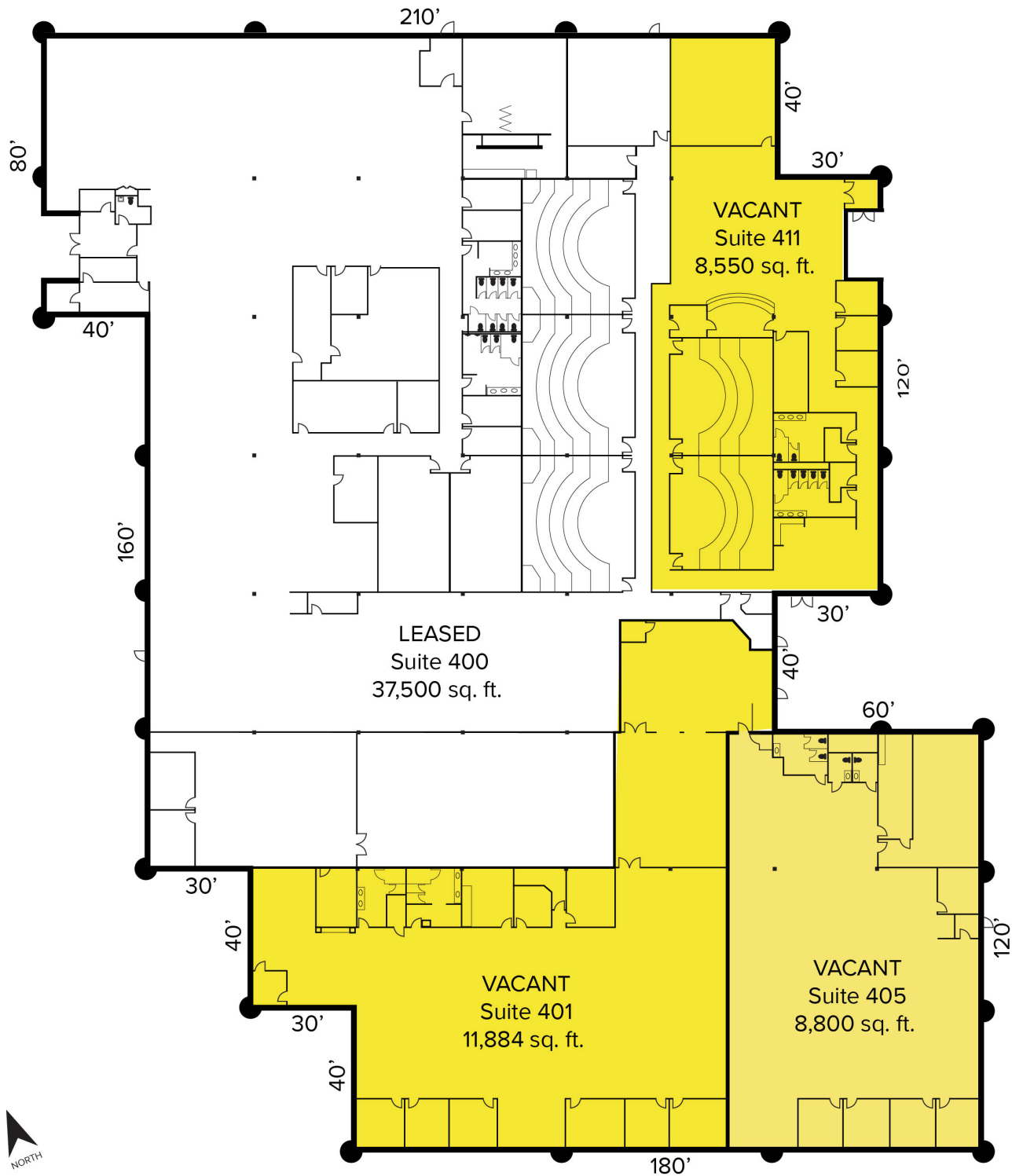
# 15041 S. Commerce Street – Dearborn, Michigan

## Industrial For Sale or Lease

For Lease –  
8,550 – 20,684 SF

For Sale –  
65,850 SF

### Floor Plan



For more information, please contact:

**JACK TOWNSEND**  
(248) 948 0115  
jtownsend@signatureassociates.com

**CHRIS SECONTINE**  
(248) 799 3174  
csecontine@signatureassociates.com

**SIGNATURE ASSOCIATES**  
One Towne Square, Suite 1200  
Southfield, MI 48076  
www.signatureassociates.com

Information is subject to verification and no liability for errors or omissions is assumed. Price is subject to change and listing withdrawal.



# 15041 S. Commerce Street – Dearborn, Michigan

## Industrial For Sale or Lease

For Lease –  
8,550 – 20,684 SF

For Sale –  
65,850 SF

Aerial



For more information, please contact:

**JACK TOWNSEND**  
(248) 948 0115  
jtownsend@signatureassociates.com

**CHRIS SECONTINE**  
(248) 799 3174  
csecontine@signatureassociates.com

**SIGNATURE ASSOCIATES**  
One Towne Square, Suite 1200  
Southfield, MI 48076  
www.signatureassociates.com

Information is subject to verification and no liability for errors or omissions is assumed. Price is subject to change and listing withdrawal.