

15041 S. COMMERCE DRIVE
DEARBORN, MICHIGAN

INDUSTRIAL FOR SALE OR LEASE

For Sale: 67,084 Square Feet

For Lease: 8,550 – 20,684 Square Feet

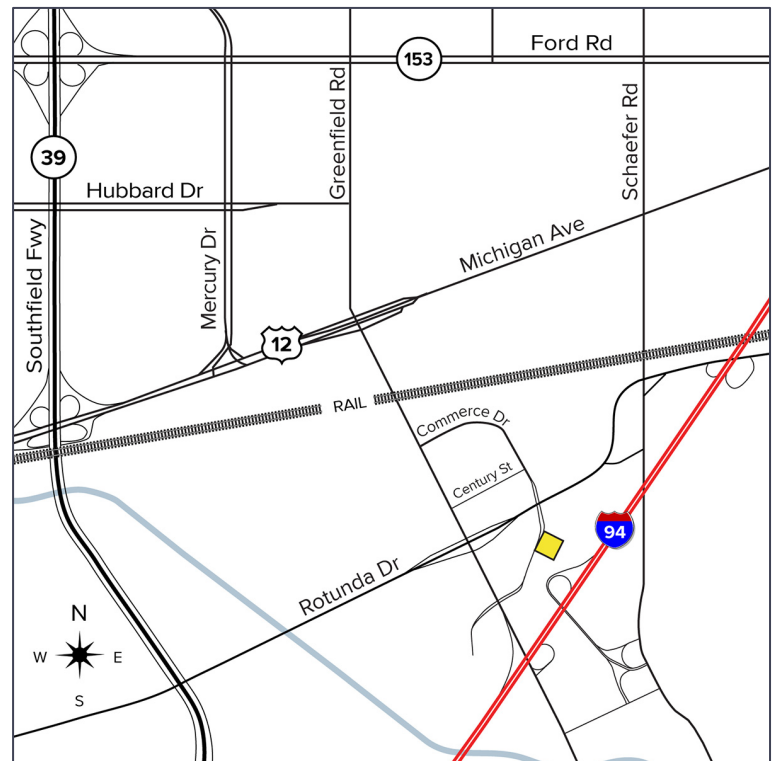


SIGNATURE ASSOCIATES
KNOW SIGNATURE | KNOW RESULTS



PROPERTY FEATURES

- 67,084 square feet available for sale
 - Unit 401: 11,884 square feet available for lease
 - Unit 405: 8,800 square feet available for lease
 - Unit 411: 8,550 square feet available for lease
- 100% office space
- 13' clear height
- Beautiful industrial building located in prestigious campus setting
- Zoned I-A, Light Industrial
- 375 parking spaces
- 100% air conditioned
- Located near I-94, Ford Rouge Plant, and Ford World HQ
- 1000 amps, 480 volts estimated power
- Lease Rate: \$10.00/sq. ft. NNN
- Sale possible



For more information, please contact:

JACK TOWNSEND
(248) 948 0115
jtownsend@signatureassociates.com

CHRIS SECONTINE
(248) 799 3174
csecontine@signatureassociates.com

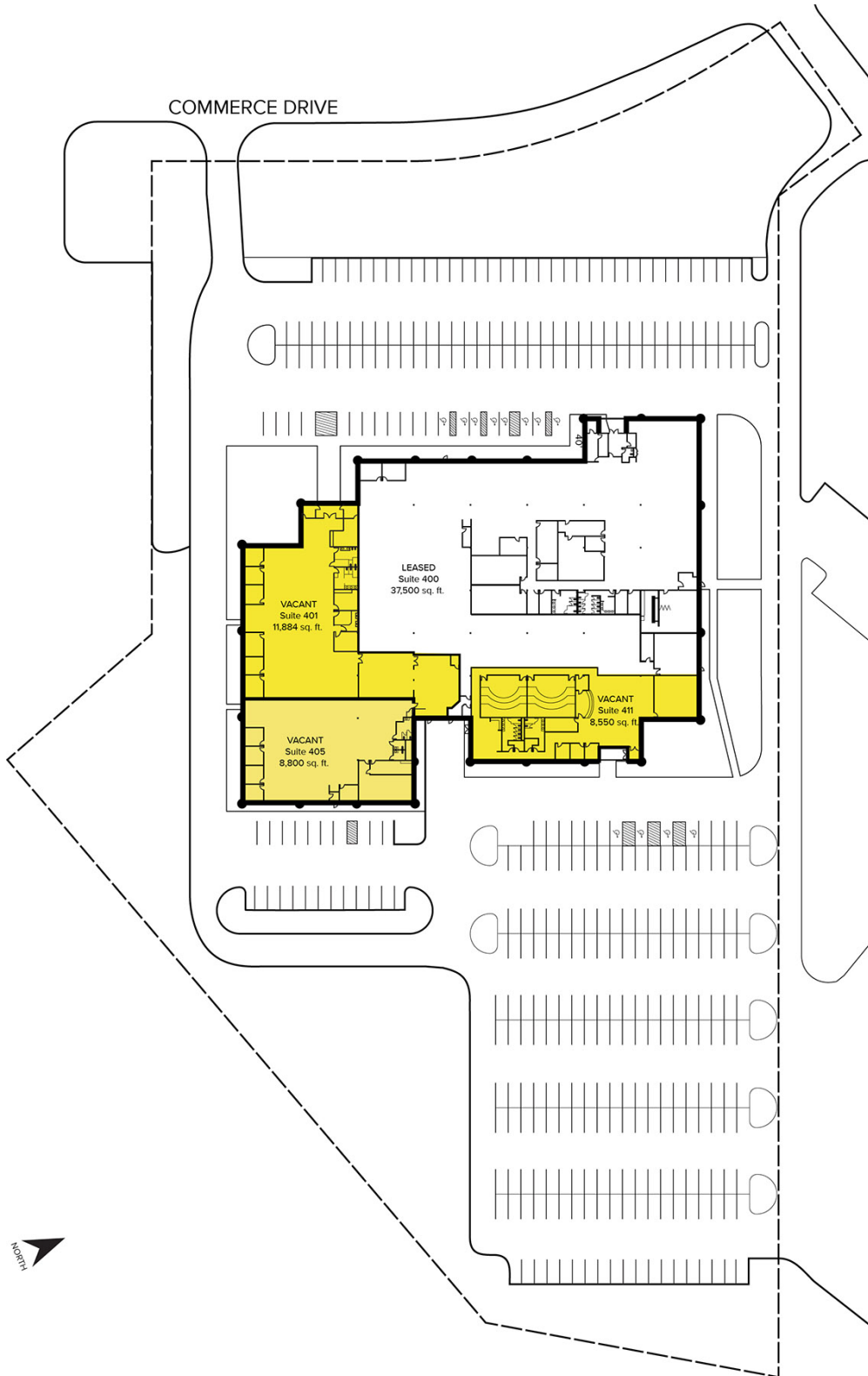
SIGNATURE ASSOCIATES
One Towne Square, Suite 1200
Southfield, MI 48076
www.signatureassociates.com

15041 S. Commerce Street – Dearborn, Michigan

Industrial For Sale or Lease

For Lease –
8,550 – 20,684 SF
For Sale –
65,850 SF

Site Plan



For more information, please contact:

JACK TOWNSEND
(248) 948 0115
jtownsend@signatureassociates.com

CHRIS SECONTINE
(248) 799 3174
csecontine@signatureassociates.com

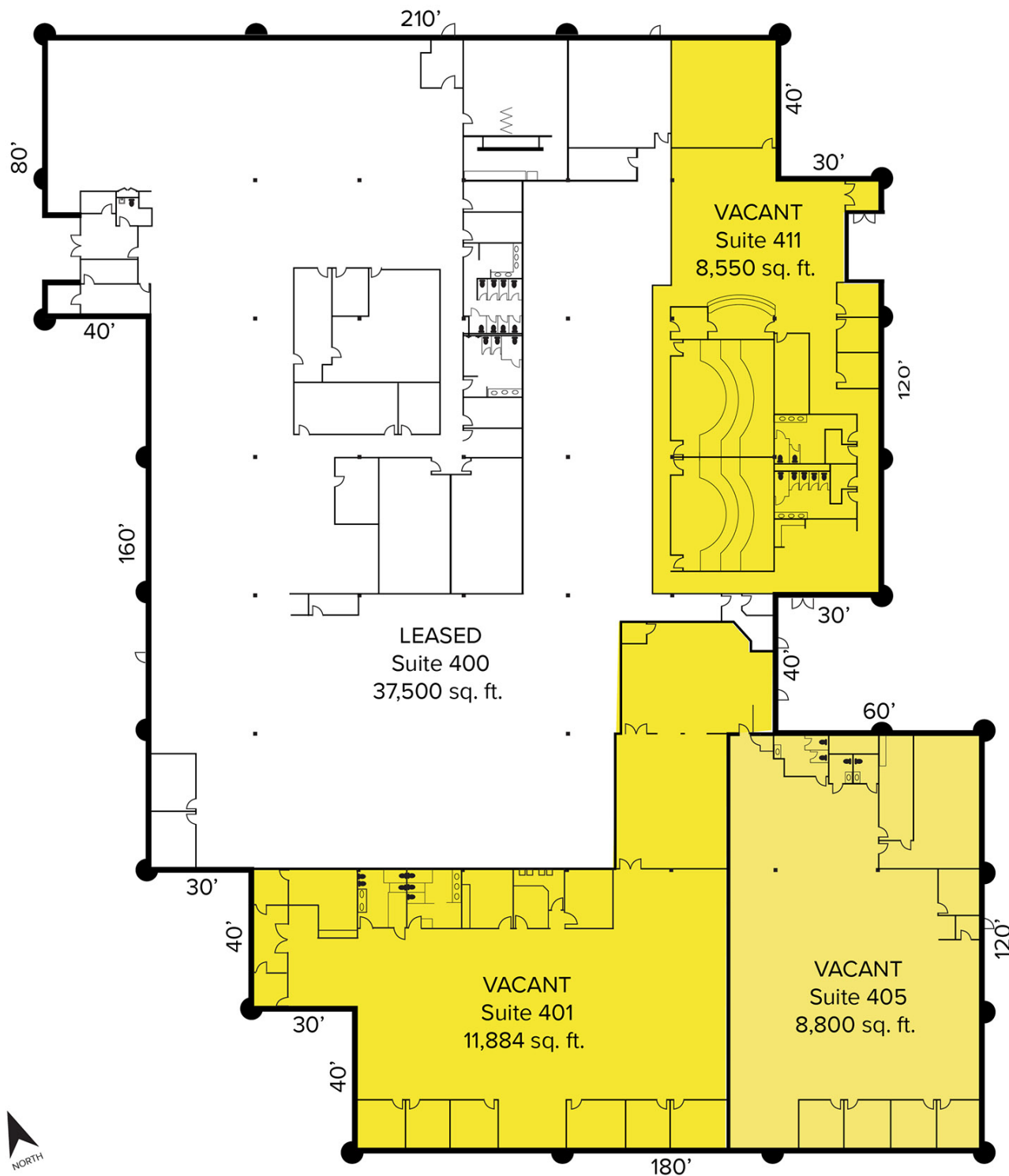
SIGNATURE ASSOCIATES
One Towne Square, Suite 1200
Southfield, MI 48076
www.signatureassociates.com

15041 S. Commerce Street – Dearborn, Michigan

Industrial For Sale or Lease

For Lease –
8,550 – 20,684 SF
For Sale –
65,850 SF

Floor Plan



For more information, please contact:

JACK TOWNSEND
(248) 948 0115
jtownsend@signatureassociates.com

CHRIS SECONTINE
(248) 799 3174
csecontine@signatureassociates.com

SIGNATURE ASSOCIATES
One Towne Square, Suite 1200
Southfield, MI 48076
www.signatureassociates.com

15041 S. Commerce Street – Dearborn, Michigan

Industrial For Sale or Lease

For Lease –
8,550 – 20,684 SF
For Sale –
65,850 SF

Aerial



For more information, please contact:

JACK TOWNSEND
(248) 948 0115
jtownsend@signatureassociates.com

CHRIS SECANTINE
(248) 799 3174
csecontine@signatureassociates.com

SIGNATURE ASSOCIATES
One Towne Square, Suite 1200
Southfield, MI 48076
www.signatureassociates.com