

Downtown Office Space

320 S Main, Ann Arbor, MI 48104



FOR LEASE



OFFERING SUMMARY

Suite C:

1,543 SF
\$22.50 SF/yr
Plus Utilities

Zoning:

D1 (Core Downtown
Mixed Use)

DEMOGRAPHICS

	1 MILE	2 MILES	3 MILES
Total Households	9,994	26,420	42,925
Total Population	25,798	74,496	114,829
Average HH Income	\$51,333	\$67,242	\$73,707

PROPERTY HIGHLIGHTS

- 2nd floor loft office space
- Features dramatic open ceiling trusses and brick walls
- Suite C has break area, conference room, phone booth and open areas
- Building entrances in front and back
- Located above Conor O'Neill's Irish Pub in the heart of Ann Arbor's Central Business District, restaurant and entertainment area
- Municipal parking structures, parking lot (Kline lot) at rear of building and street parking

Joe Palms, CCIM

734.662.3676

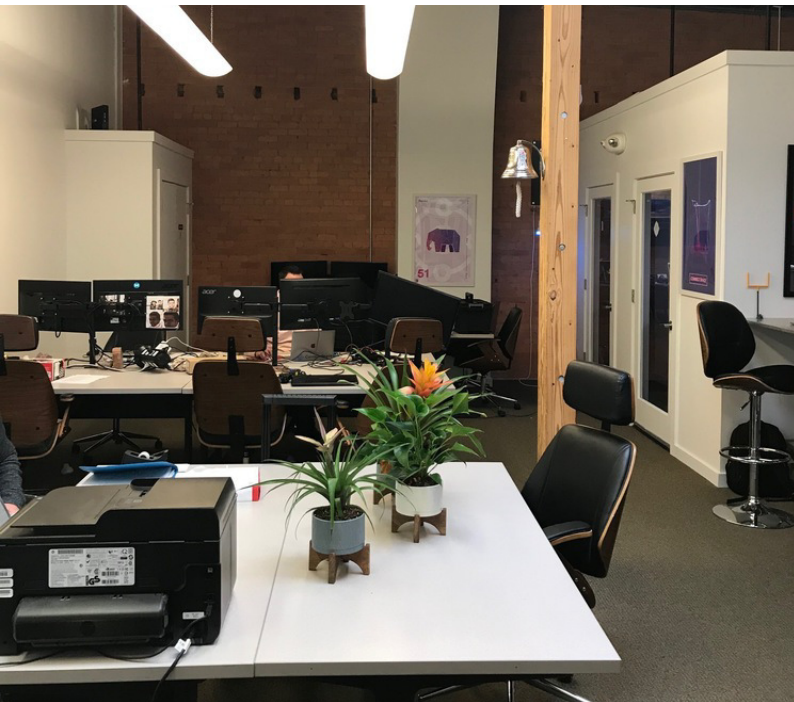
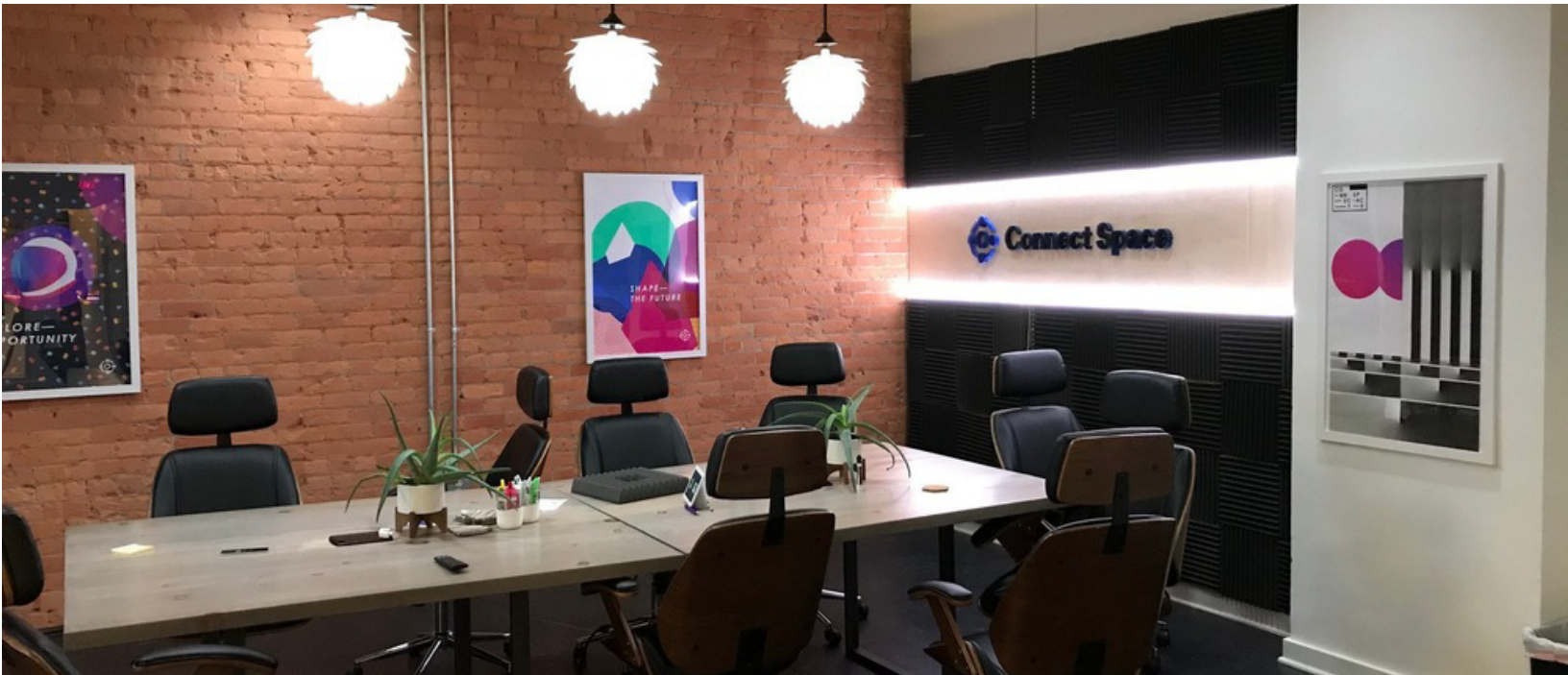
jpalms@swishercommercial.com

Downtown Office Space

320 S Main, Ann Arbor, MI 48104



For Lease



Joe Palms, CCIM

734.662.3676

jpalms@swishercommercial.com

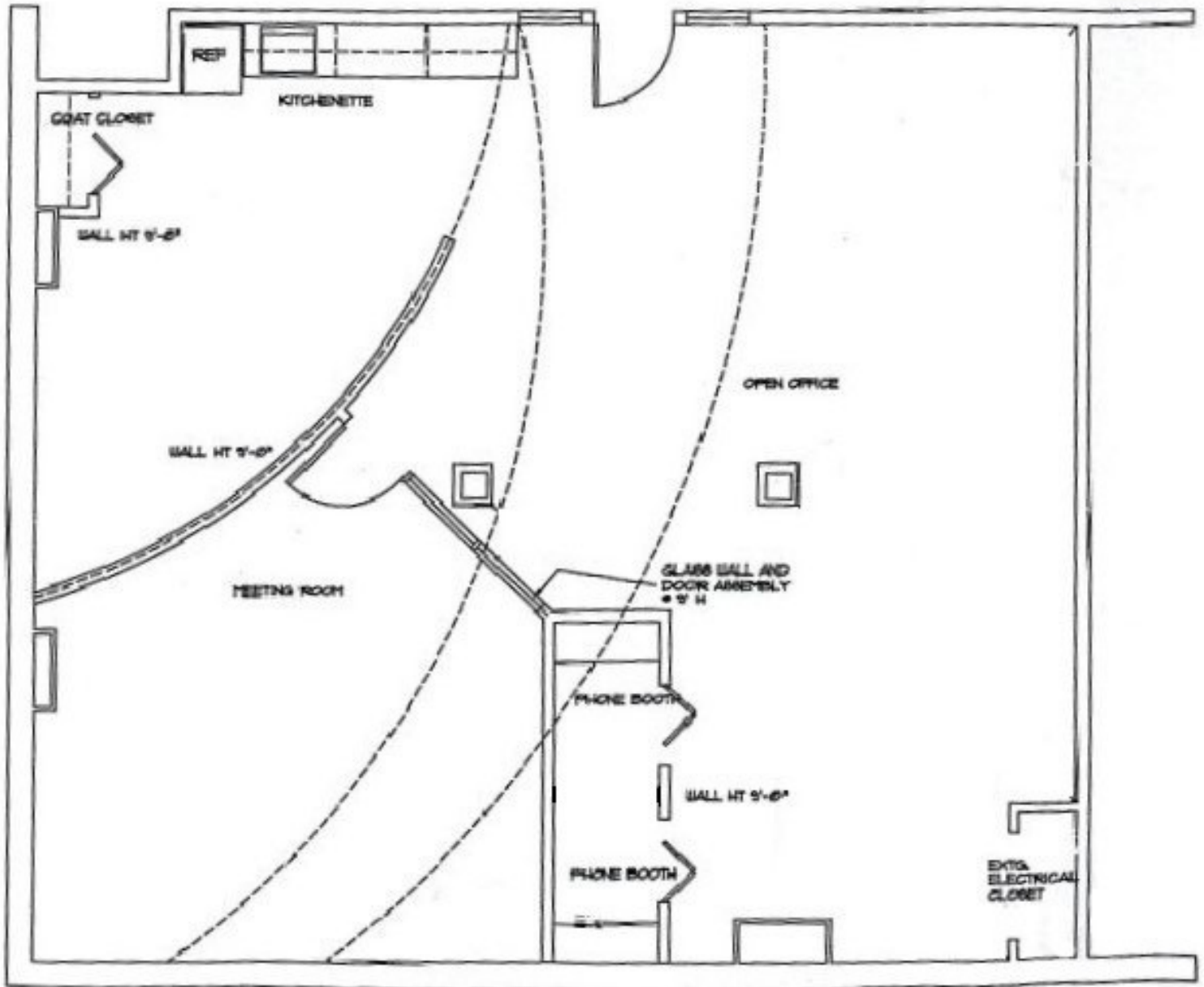
Downtown Office Space

320 S Main, Ann Arbor, MI 48104



Swisher
COMMERCIAL

For Lease



Joe Palms, CCIM

734.662.3676

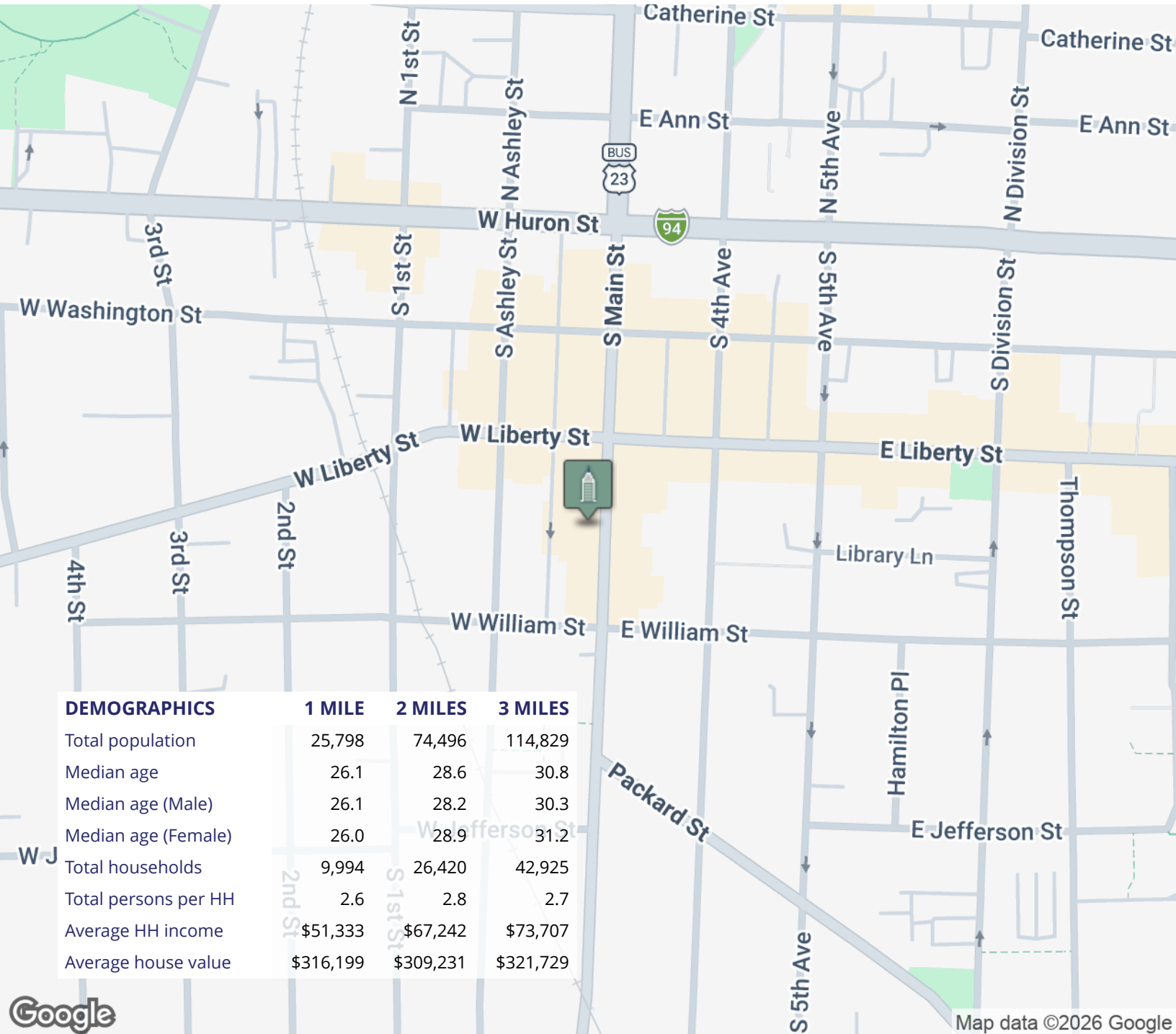
jpalms@swishercommercial.com

Downtown Office Space

320 S Main, Ann Arbor, MI 48104



For Lease



Joe Palms, CCIM

734.662.3676

jpalms@swishercommercial.com