

Monument Park Office for Lease - Downtown Dexter

8031 Main, Dexter, MI 48130



For Lease

FOR LEASE



OFFERING SUMMARY

Lease Rate:	\$29.00 SF/yr Plus Utilities
Available SF:	Suite 302 700 SF
Zoning:	CBD (CENTRAL BUSINESS DISTRICT)

DEMOGRAPHICS	1 MILE	3 MILES	5 MILES
Total Households	1,386	3,779	9,809
Total Population	3,545	10,013	26,180
Average HH Income	\$143,322	\$149,489	\$164,147

PROPERTY HIGHLIGHTS

- Highly visible building
- Located in downtown Dexter across the street from Monument Park
- Easy access to I-94, M-14, and downtown Ann Arbor
- Bullpen area
- Common area restrooms
- Passenger elevator
- Other tenants include Aubrey's Pizzeria, orthodontist and various other professional businesses
- Parking behind and adjacent to the building

Jeff Evans
734.926.0222
jeffevans@swishercommercial.com

Monument Park Office Suite Downtown Dexter

8031 Main, Dexter, MI 48130



For Lease



Jeff Evans

734.926.0222

jeffevans@swishercommercial.com

PROPERTY DESCRIPTION

Great location Downtown Dexter at corner of Baker Road and Ann Arbor/Main Street. Next to popular Dairy Queen. Across from Gazebo Park site of Dexter Daze and other community gatherings.

Building is 21,000 sf with entire ground level occupied by Aubree's restaurant. Professional office and services on 3rd floor. Building has elevators and common area restrooms.

Located in a prominent, well-maintained building, the office suite includes:

- Private Office: Ample natural light from large windows.
- Open Bullpen Area: Flexible workspace for teams or collaborative work.
- Parking: On-site parking available behind the building for tenants and guests.
- Building Amenities: Common restrooms, elevator access, and a first-floor restaurant.
- Proximity: Walking distance to downtown Dexter's many restaurants, retailers, and parks.

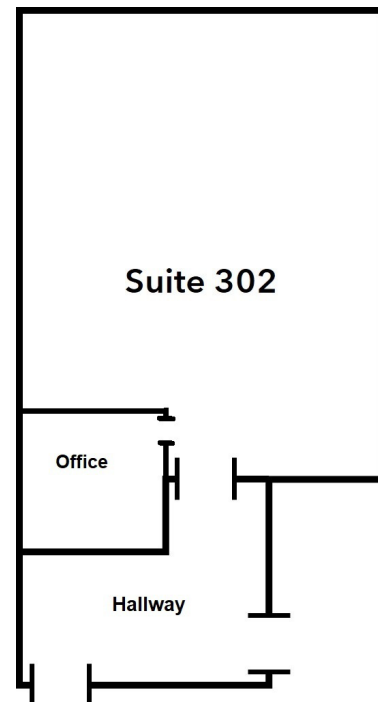
This office space is perfect for businesses looking to establish themselves in the heart of Dexter with a vibrant community feel.

Monument Park Office Suite Downtown Dexter - Suite 302

8031 Main, Dexter, MI 48130



For Lease



Jeff Evans

734.926.0222

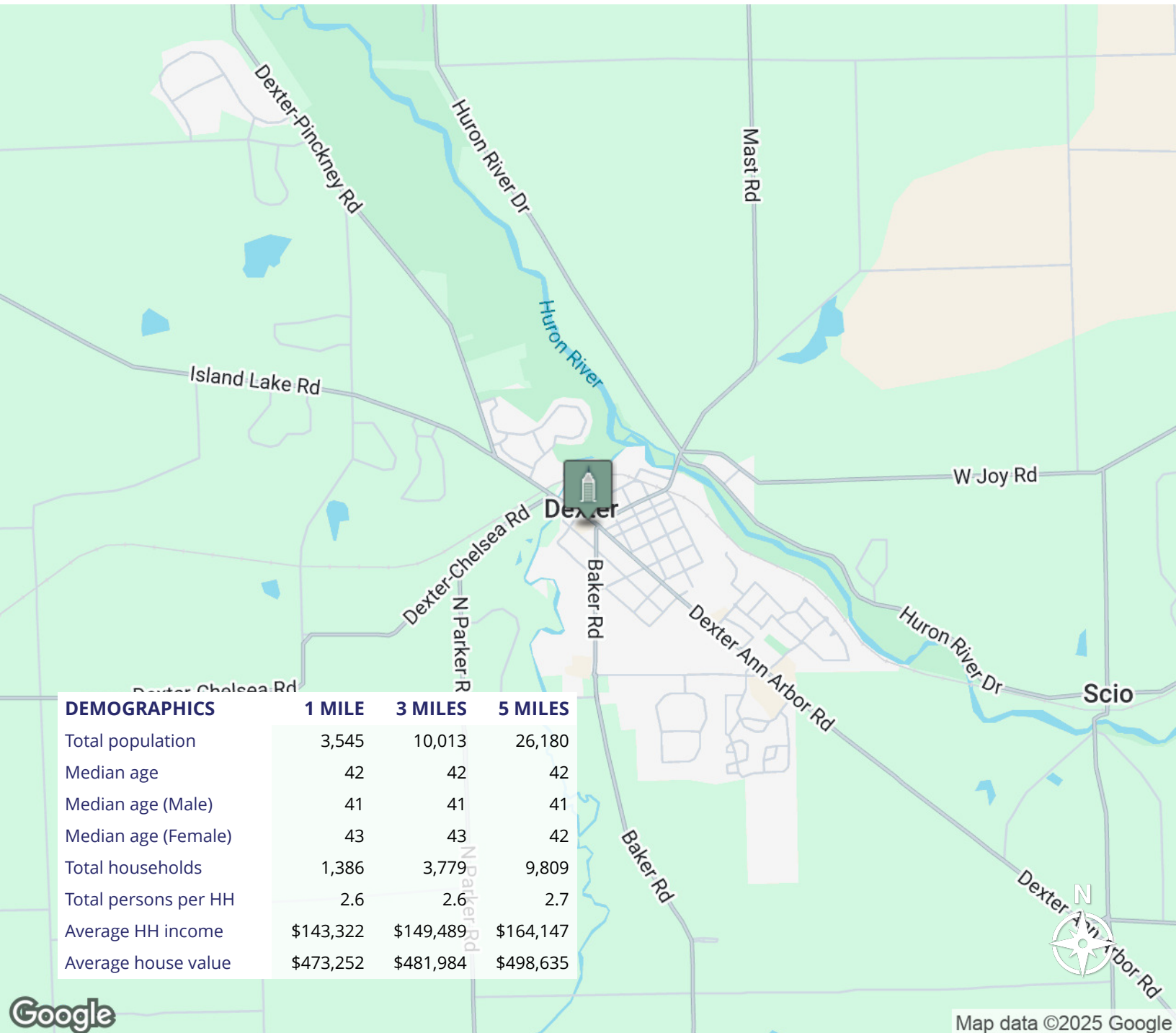
jeffevans@swishercommercial.com

Monument Park Office Suite Downtown Dexter

8031 Main, Dexter, MI 48130



For Lease



Jeff Evans

734.926.0222

jeffevans@swishercommercial.com