

31145 EIGHT MILE ROAD
LIVONIA, MICHIGAN

INDUSTRIAL FOR LEASE
7,000 Square Feet Available



**SIGNATURE
ASSOCIATES**
KNOW SIGNATURE | KNOW RESULTS

SMALL CRANE BUILDING



PROPERTY FEATURES

- 7,000 square feet available
- 1,200 square foot office
- 15' clear height
- (2) grade level doors - (12' x 12', 14' x 14')
- (2) 5-ton cranes
- Great image buildings – Extremely well-maintained
- Air-lines throughout, polished concrete floors, beautiful office space, and a fenced concrete yard
- Main road exposure
- Approximately 400 amps, 240 volts, 3-phase, buss duct
- New roof
- Lease Rate: \$10.25/sq. ft. NNN



For more information, please contact:

CHRIS D'ANGELO
(248) 948 0109
cdangelo@signatureassociates.com

JACK TOWNSEND
(248) 948 0115
jtownsend@signatureassociates.com

SIGNATURE ASSOCIATES
One Towne Square, Suite 1200
Southfield, MI 48076
www.signatureassociates.com

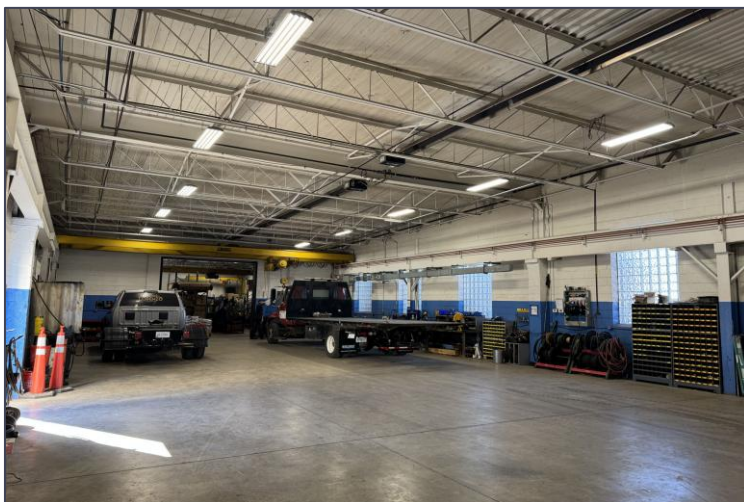
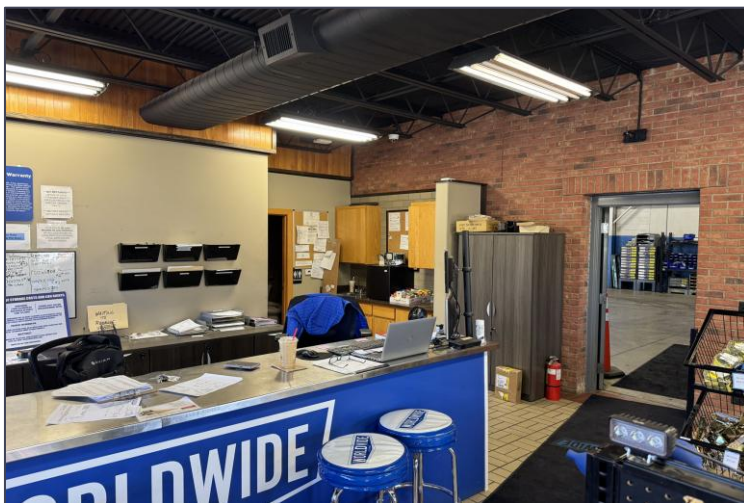
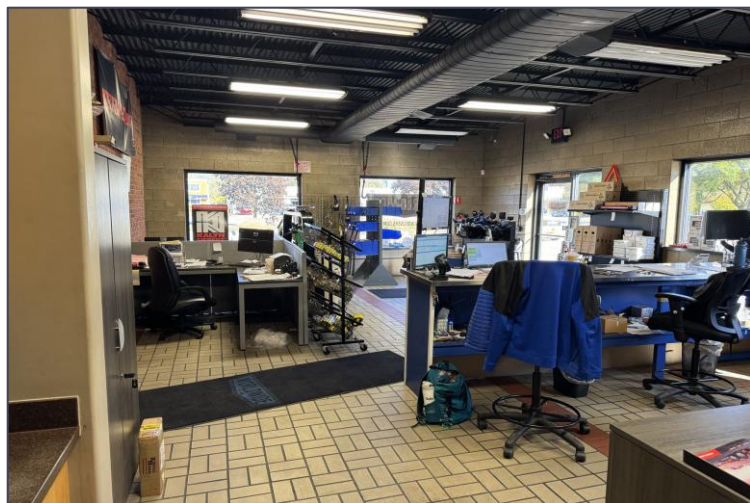
Information is subject to verification and no liability for errors or omissions is assumed. Price is subject to change and listing withdrawal.

31145 Eight Mile Road – Livonia, Michigan

Industrial For Lease

7,000
Square Feet
AVAILABLE

Additional Photos



For more information, please contact:

CHRIS D'ANGELO
(248) 948 0109
cdangelo@signatureassociates.com

JACK TOWNSEND
(248) 948 0115
jtownsend@signatureassociates.com

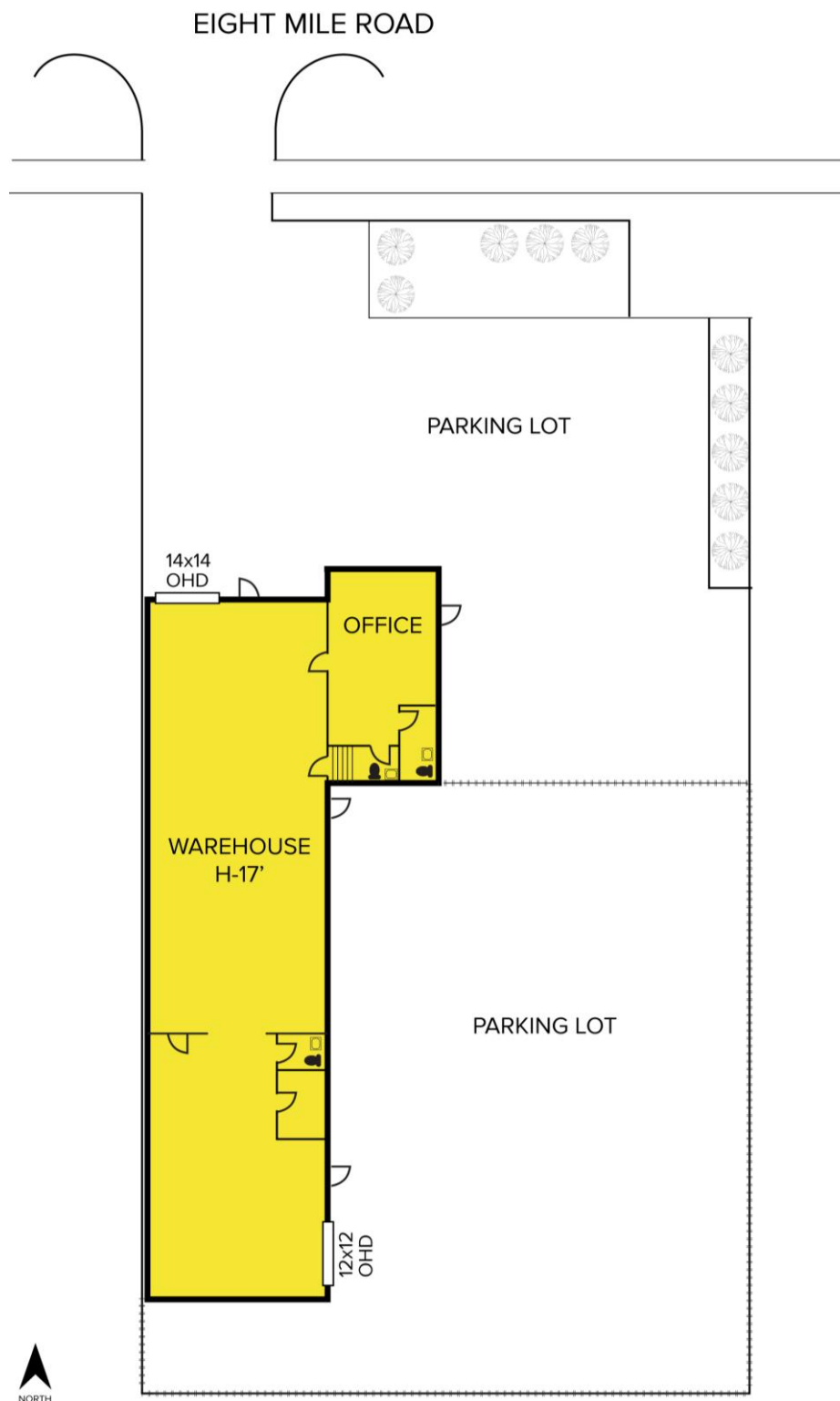
SIGNATURE ASSOCIATES
One Towne Square, Suite 1200
Southfield, MI 48076
www.signatureassociates.com

31145 Eight Mile Road – Livonia, Michigan

Industrial For Lease

7,000
Square Feet
AVAILABLE

Site Plan



For more information, please contact:

CHRIS D'ANGELO

(248) 948 0109

cdangelo@signatureassociates.com

JACK TOWNSEND

(248) 948 0115

jtownsend@signatureassociates.com

SIGNATURE ASSOCIATES

One Towne Square, Suite 1200

Southfield, MI 48076

www.signatureassociates.com

31145 Eight Mile Road – Livonia, Michigan

Industrial For Lease

7,000
Square Feet
AVAILABLE

Aerial



For more information, please contact:

CHRIS D'ANGELO
(248) 948 0109
cdangelo@signatureassociates.com

JACK TOWNSEND
(248) 948 0115
jtownsend@signatureassociates.com

SIGNATURE ASSOCIATES
One Towne Square, Suite 1200
Southfield, MI 48076
www.signatureassociates.com

Information is subject to verification and no liability for errors or omissions is assumed. Price is subject to change and listing withdrawal.