

Downtown Office Suites

100 S. Main , Ann Arbor, MI 48104



FOR LEASE



OFFERING SUMMARY

| | |
|---------------|---------------------------------|
| Lease Rate: | \$29.50 SF/yr Plus Utilities |
| Available SF: | 780 - 19,400 SF |
| Zoning: | D1 (Downtown Core Mixed Use) |

| DEMOGRAPHICS | 1 MILE | 2 MILES | 3 MILES |
|-------------------|----------|----------|----------|
| Total Households | 9,459 | 25,906 | 42,272 |
| Total Population | 23,964 | 73,535 | 114,130 |
| Average HH Income | \$51,802 | \$66,929 | \$73,792 |

PROPERTY HIGHLIGHTS

- Entire floors available at 3,500 sf per floor with a 19,400 SF total footprint.
- Floors consist of private offices, conference rooms and open space
- Lots of windows bringing in ample natural light
- Locally owned and managed
- Perfect location for law firm or financial office
- Walking distance to restaurants, shops and businesses
- Some onsite parking, as well as municipal street, lot and structure parking

Randy Maas

734.222.7525

rmaas@swishercommercial.com

Downtown Office Suites

100 S. Main , Ann Arbor, MI 48104



For Lease



Randy Maas

734.222.7525

rmaas@swishercommercial.com

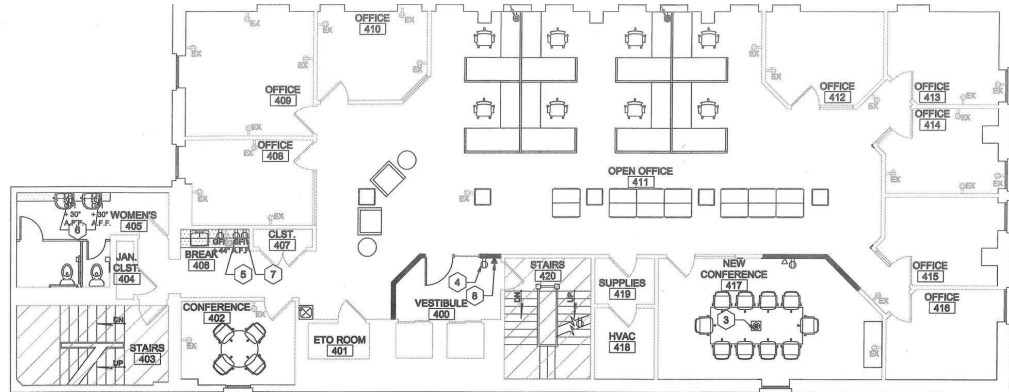
Downtown Office Suites

100 S. Main , Ann Arbor, MI 48104



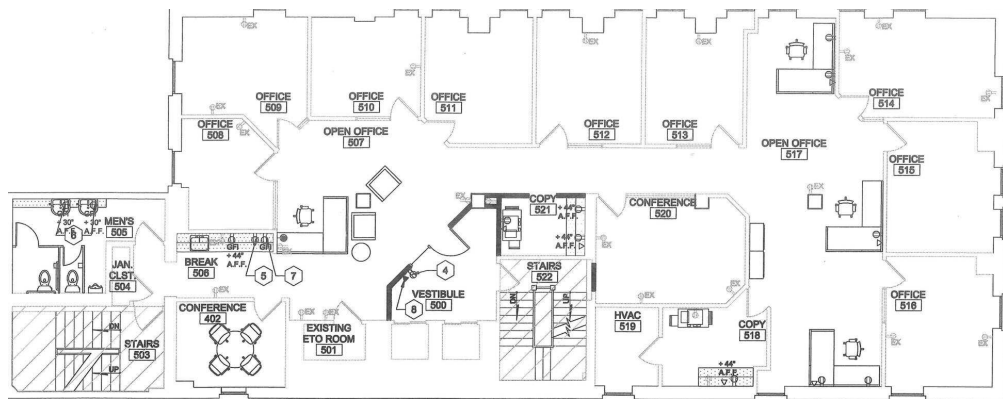
Swisher
COMMERCIAL

For Lease



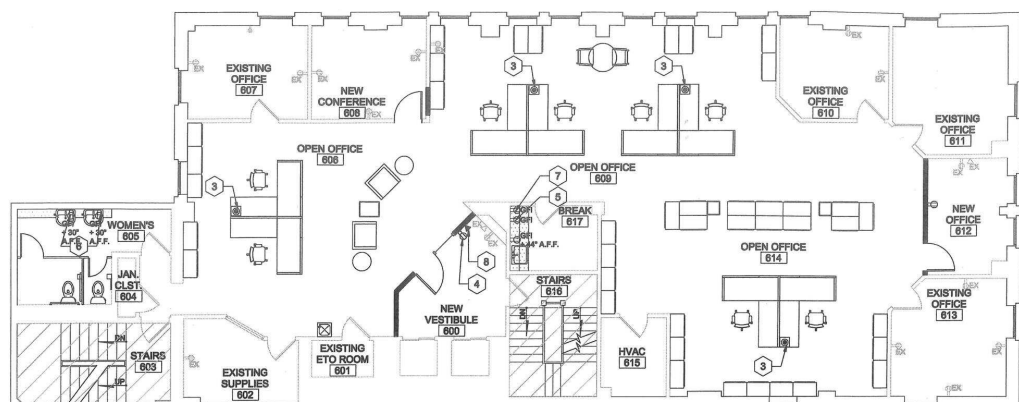
Fourth Floor

FLOOR 4
2
OUTLET LOCATION PLAN
SCALE: 1/8" = 1'-0"



Fifth Floor

FLOOR 5
3
OUTLET LOCATION PLAN
SCALE: 1/8" = 1'-0"



Sixth Floor

FLOOR 6
4
OUTLET LOCATION PLAN
SCALE: 1/8" = 1'-0"

Randy Maas

734.222.7525

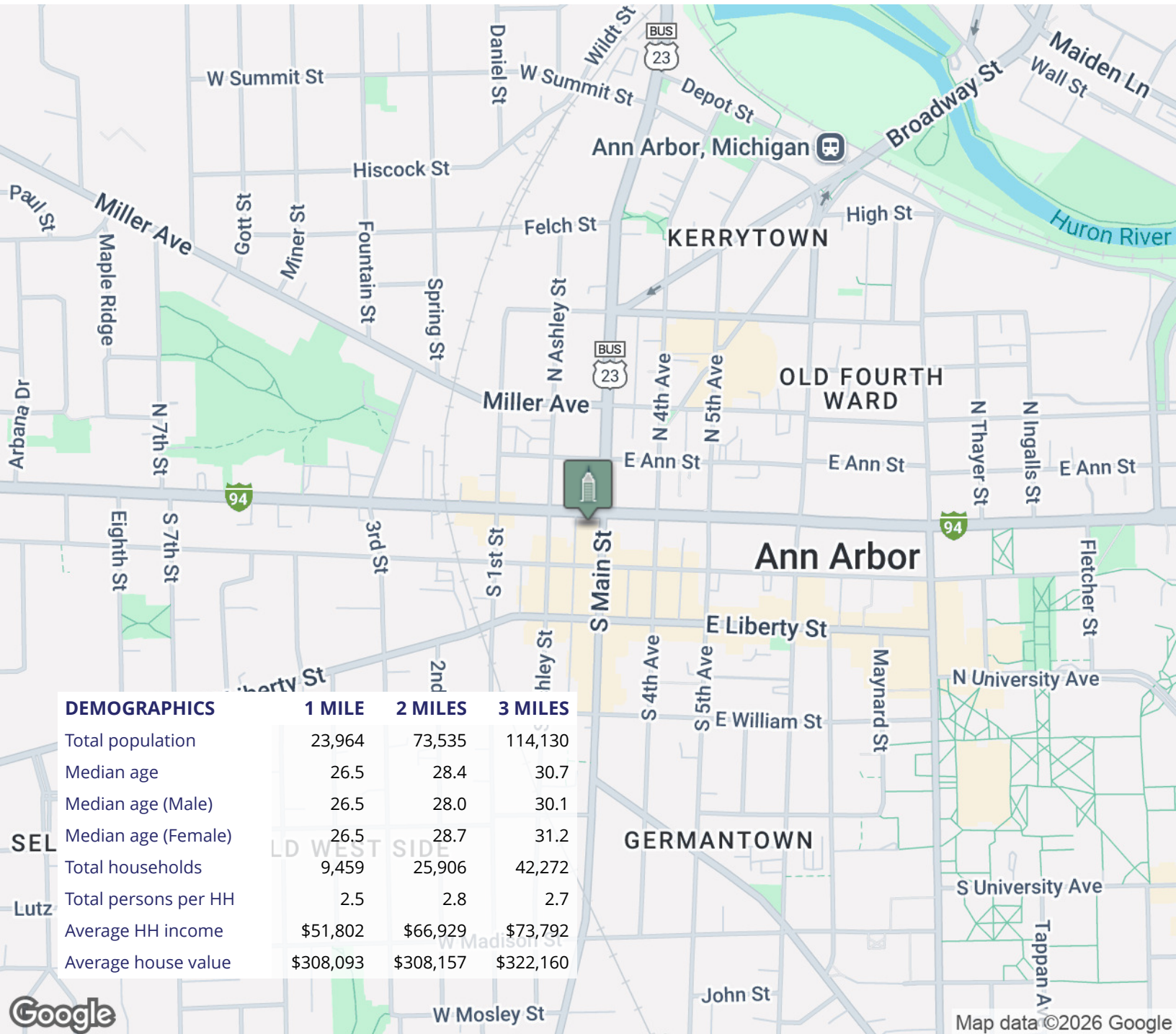
rmaas@swishercommercial.com

Downtown Office Suites

100 S. Main , Ann Arbor, MI 48104



For Lease



Randy Maas

734.222.7525

rmaas@swishercommercial.com