

**12147 – 12163 GLOBE STREET  
LIVONIA, MICHIGAN**

**INDUSTRIAL FOR SALE OR LEASE**

For Sale: 53,855 Square Feet

For Lease: 18,876 – 53,855 Square Feet



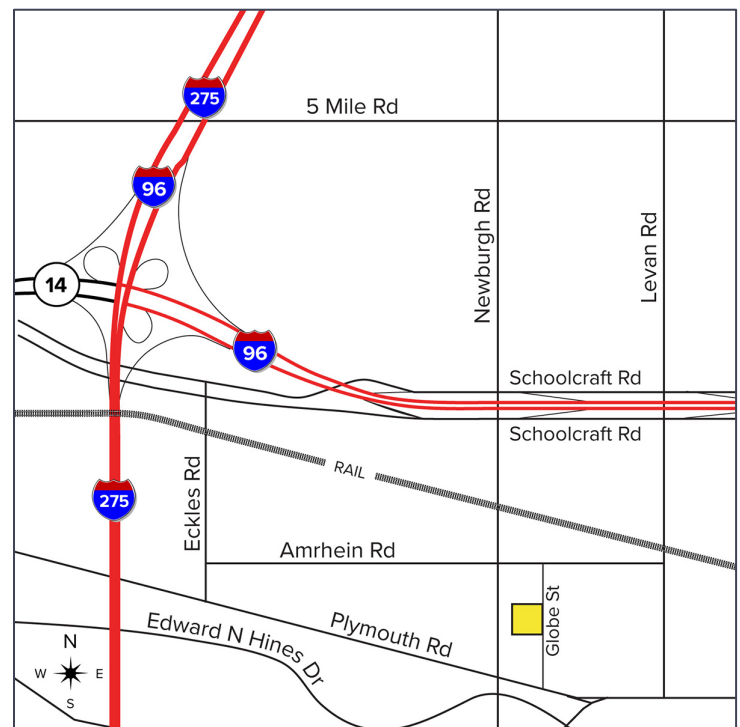
**SIGNATURE  
ASSOCIATES**  
KNOW SIGNATURE | KNOW RESULTS

**HEAVY POWER & CRANE WAREHOUSE**



**PROPERTY FEATURES**

- 18,876 – 53,855 square feet available
  - 34,979 square feet unit: 24,321 sq. ft. of warehouse space with 26' clear height, (2) 14' x 20' overhead doors, and 10,658 sq. ft. of renovated office space
  - 18,876 square feet unit: 20' clear height, (4) loading docks, (2) 14' x 16' overhead doors
- (1) 30-ton, (1) 15-ton, (3) 7.5-ton, (2) 5-ton cranes
- Fully air-conditioned
- Ample parking and fenced in rear lot for storage or parking included
- Lease Rate: \$6.95/sq. ft. NNN
- Sale Price: \$5,100,000 (\$94.70/sq. ft.)



For more information, please contact:

**STEVE GORDON**

(248) 948 0101

sgordon@signatureassociates.com

**ALEX TIMMIS**

(248) 359 0623

atimmis@signatureassociates.com

**SIGNATURE ASSOCIATES**

One Towne Square, Suite 1200

Southfield, MI 48076

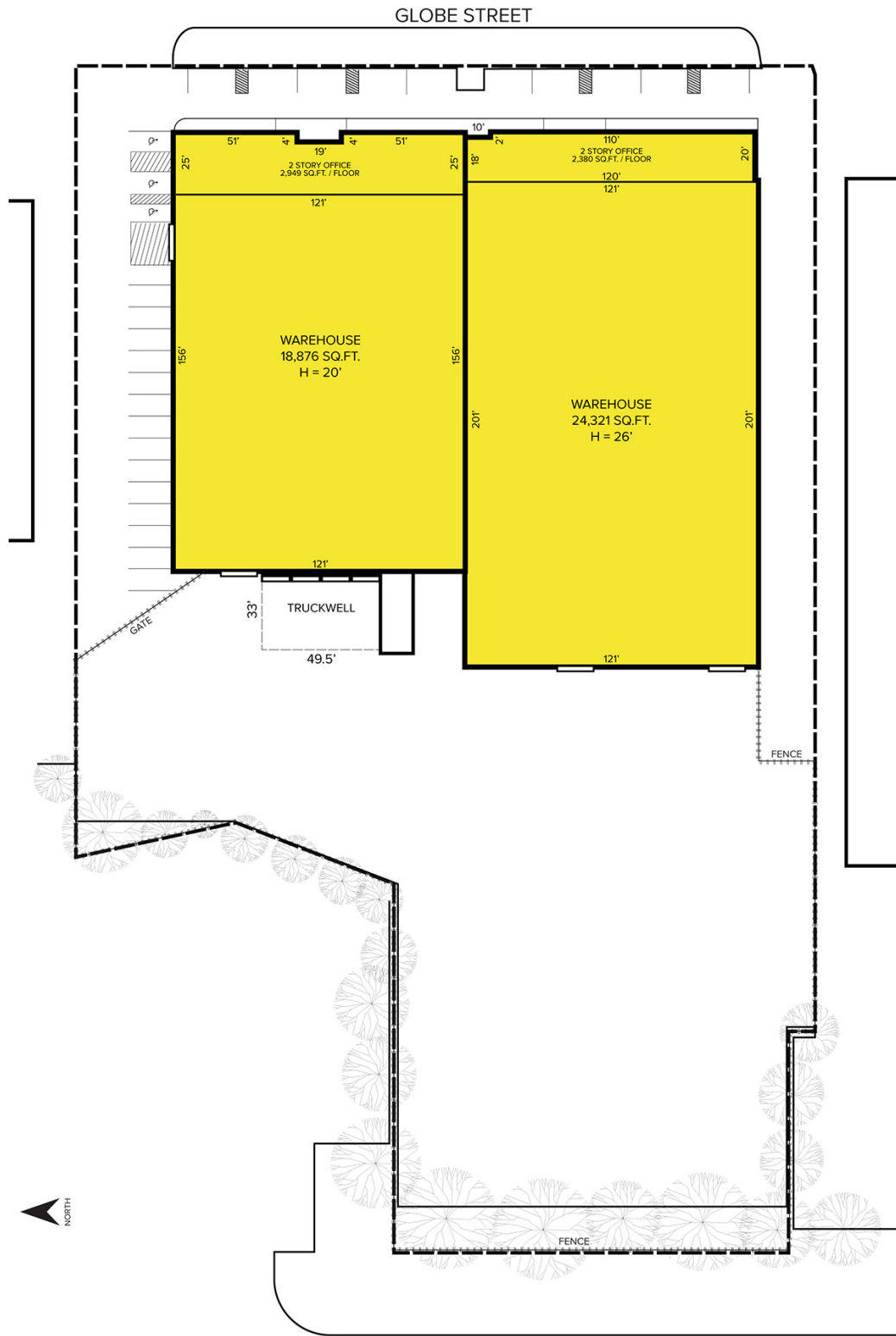
www.signatureassociates.com

# 12147 - 12163 Globe Street – Livonia, Michigan

## Industrial For Sale or Lease

18,876 – 53,855  
Square Feet  
Available

### Site Plan



For more information, please contact:

**STEVE GORDON**  
(248) 948 0101  
sgordon@signatureassociates.com

**ALEX TIMMIS**  
(248) 359 0623  
atimmis@signatureassociates.com

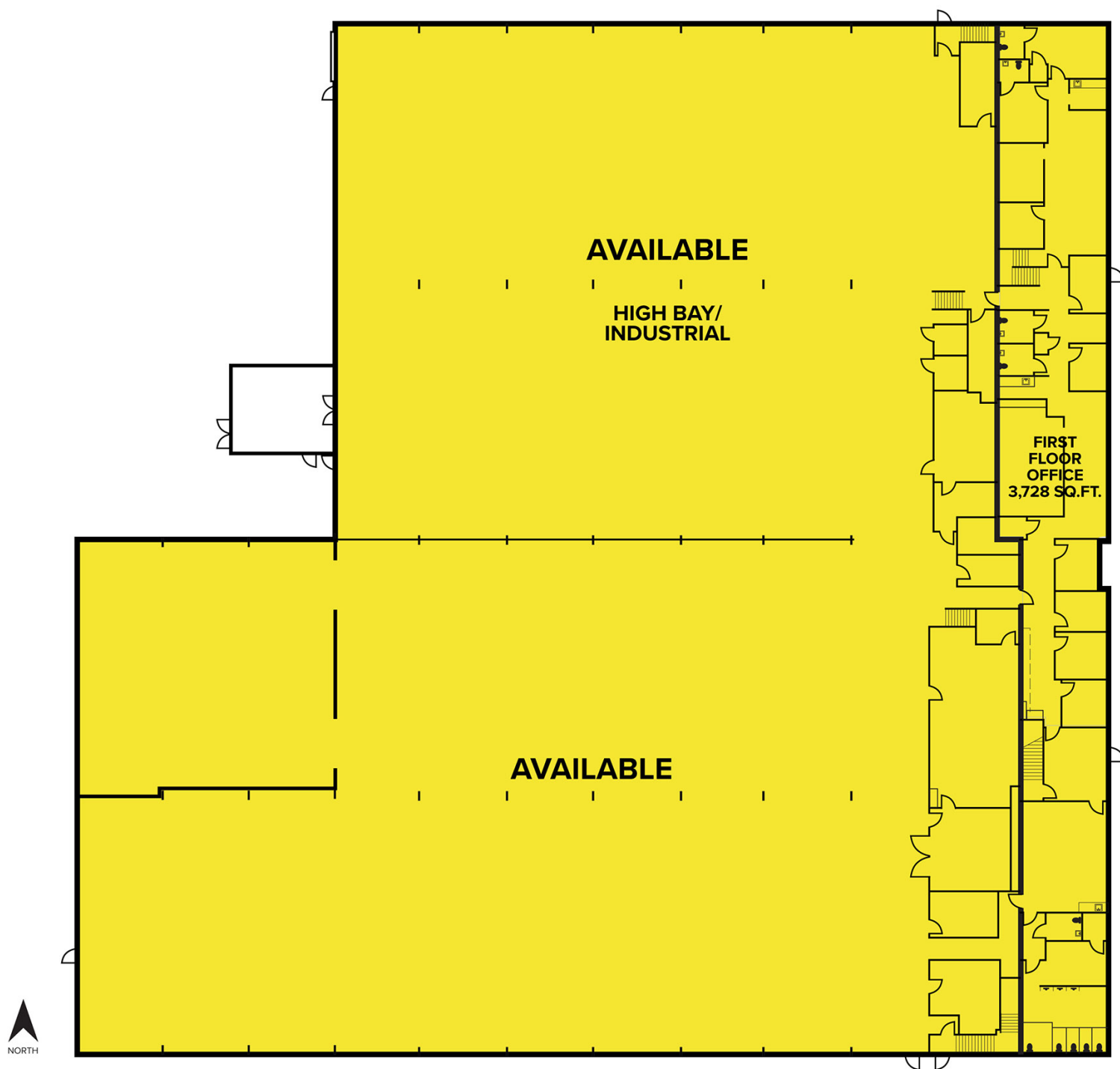
**SIGNATURE ASSOCIATES**  
One Towne Square, Suite 1200  
Southfield, MI 48076  
www.signatureassociates.com

Information is subject to verification and no liability for errors or omissions is assumed. Price is subject to change and listing withdrawal.

12147 - 12163 Globe Street – Livonia, Michigan  
Industrial For Sale or Lease

18,876 – 53,855  
Square Feet  
Available

First Floor Plan



For more information, please contact:

**STEVE GORDON**  
(248) 948 0101  
sgordon@signatureassociates.com

**ALEX TIMMIS**  
(248) 359 0623  
atimmis@signatureassociates.com

**SIGNATURE ASSOCIATES**  
One Towne Square, Suite 1200  
Southfield, MI 48076  
www.signatureassociates.com

Information is subject to verification and no liability for errors or omissions is assumed. Price is subject to change and listing withdrawal.

12147 - 12163 Globe Street – Livonia, Michigan  
Industrial For Sale or Lease

18,876 – 53,855  
Square Feet  
Available

Second Floor Plan



For more information, please contact:

**STEVE GORDON**  
(248) 948 0101  
sgordon@signatureassociates.com

**ALEX TIMMIS**  
(248) 359 0623  
atimmis@signatureassociates.com

**SIGNATURE ASSOCIATES**  
One Towne Square, Suite 1200  
Southfield, MI 48076  
www.signatureassociates.com

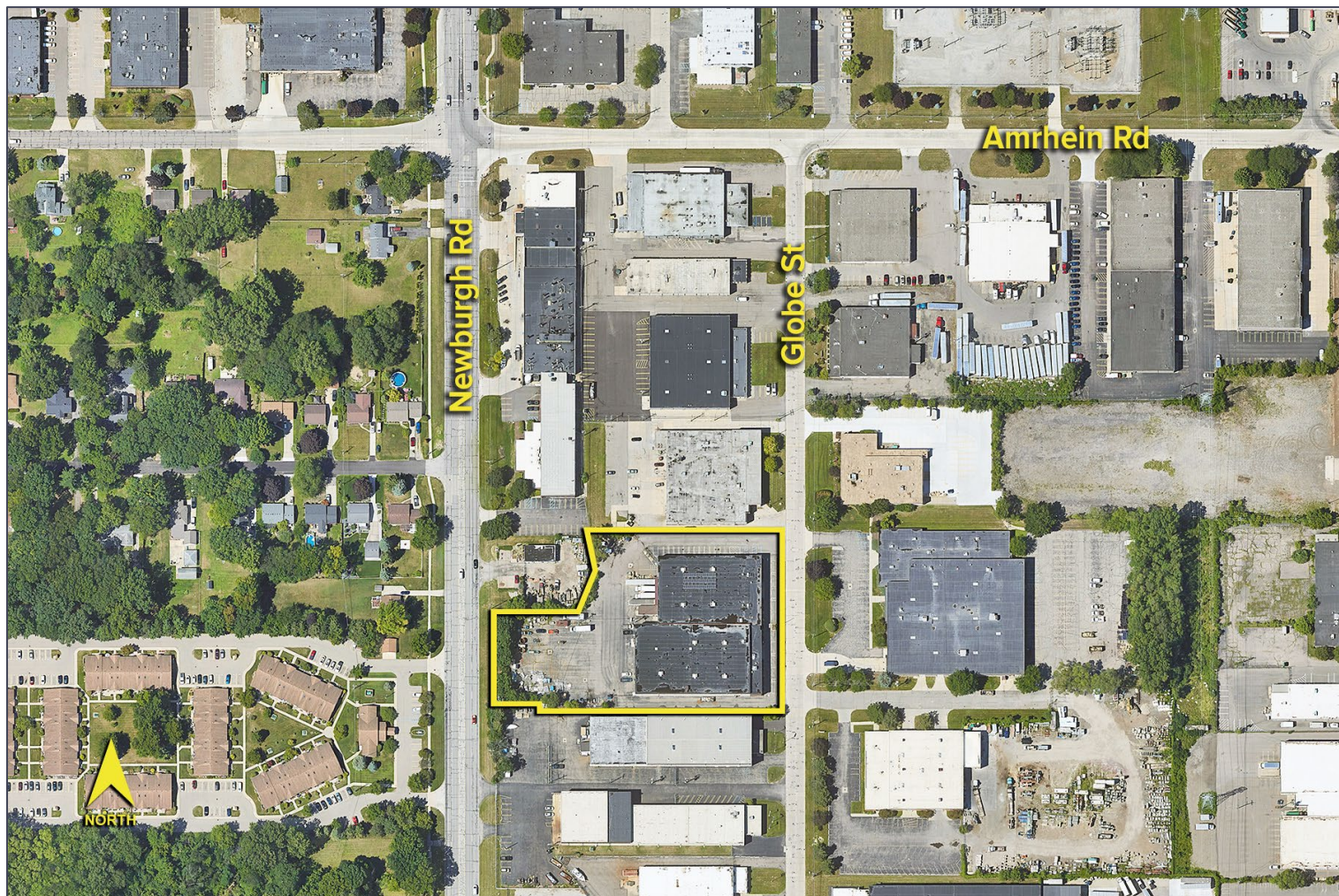


# 12147 - 12163 Globe Street – Livonia, Michigan

## Industrial For Sale or Lease

18,876 – 53,855  
Square Feet  
Available

Aerial



For more information, please contact:

**STEVE GORDON**

(248) 948 0101

[sgordon@signatureassociates.com](mailto:sgordon@signatureassociates.com)

**ALEX TIMMIS**

(248) 359 0623

[atimmis@signatureassociates.com](mailto:atimmis@signatureassociates.com)

**SIGNATURE ASSOCIATES**

One Towne Square, Suite 1200

Southfield, MI 48076

[www.signatureassociates.com](http://www.signatureassociates.com)