

4998 McCARTHY DRIVE
MILFORD, MICHIGAN

INDUSTRIAL FOR SALE
33,630 Square Feet Available



**SIGNATURE
ASSOCIATES**
KNOW SIGNATURE | KNOW RESULTS

McCARTHY INDUSTRIAL PARK



PROPERTY FEATURES

- 33,630 square feet available
- 4,030 square foot office
- 20' – 24' clear height
- (1) 12' x 14' grade level door
- (1) truckwell
- 600 amps, 120/480/600 volts, buss ducts
- 650 sq. ft. air-conditioned quality control room
- Nine private offices, one conference room, and two break rooms
- Pontiac Trail frontage
- I-96 freeway access via Milford Road
- Sale Price: \$3,430,260 (\$102.00/sq. ft.)



For more information, please contact:

CHRIS D'ANGELO
(248) 948 0109
cdangelo@signatureassociates.com

JIM MONTGOMERY
(248) 359 0614
jmontgomery@signatureassociates.com

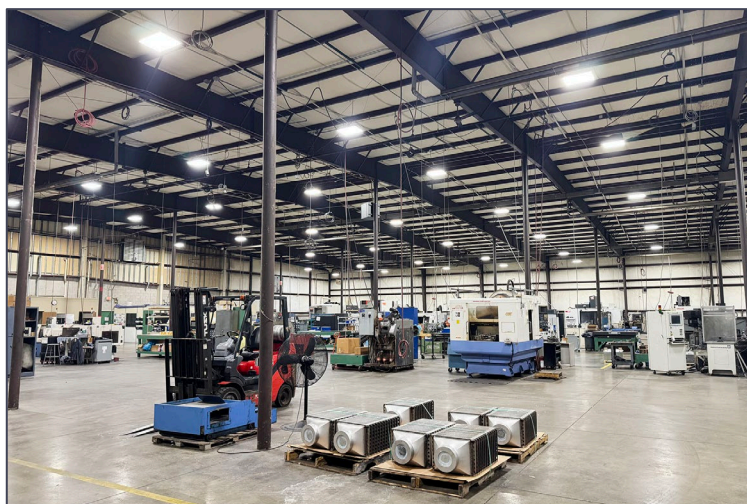
SIGNATURE ASSOCIATES
One Towne Square, Suite 1200
Southfield, MI 48076
www.signatureassociates.com

4998 McCarthy Drive – Milford, Michigan

Industrial For Sale

33,630
Square Feet
AVAILABLE

Interior Photos



For more information, please contact:

CHRIS D'ANGELO
(248) 948 0109
cdangelo@signatureassociates.com

JIM MONTGOMERY
(248) 359 0614
jmontgomery@signatureassociates.com

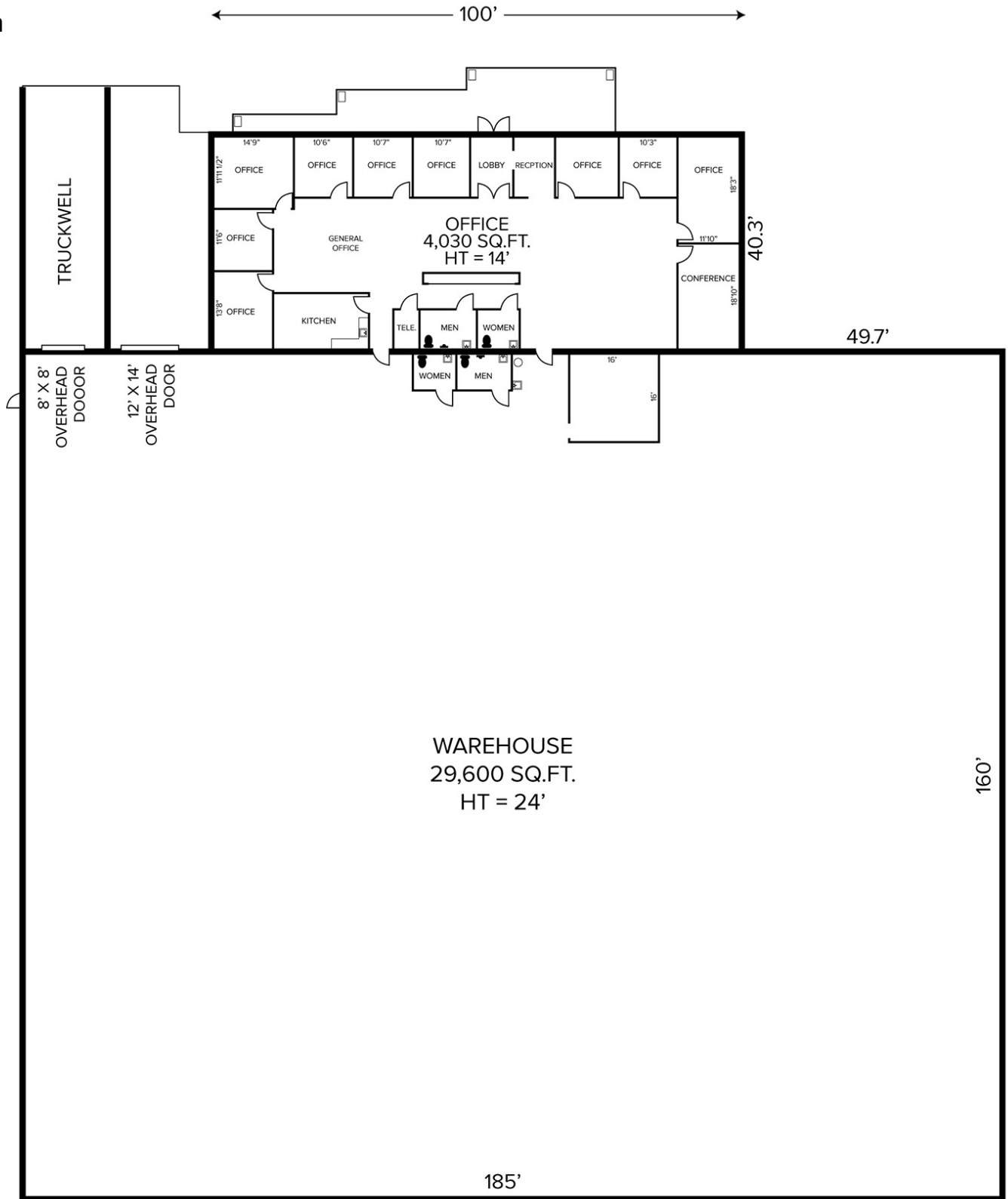
SIGNATURE ASSOCIATES
One Towne Square, Suite 1200
Southfield, MI 48076
www.signatureassociates.com

4998 McCarthy Drive – Milford, Michigan

Industrial For Sale

33,630
Square Feet
AVAILABLE

Site Plan



For more information, please contact:

CHRIS D'ANGELO
(248) 948 0109
cdangelo@signatureassociates.com

JIM MONTGOMERY
(248) 359 0614
jmontgomery@signatureassociates.com

SIGNATURE ASSOCIATES
One Towne Square, Suite 1200
Southfield, MI 48076
www.signatureassociates.com

4998 McCarthy Drive – Milford, Michigan

Industrial For Sale

33,630
Square Feet
AVAILABLE

Aerial



For more information, please contact:

CHRIS D'ANGELO
(248) 948 0109
cdangelo@signatureassociates.com

JIM MONTGOMERY
(248) 359 0614
jmontgomery@signatureassociates.com

SIGNATURE ASSOCIATES
One Towne Square, Suite 1200
Southfield, MI 48076
www.signatureassociates.com