

NEW LISTING FOR SALE

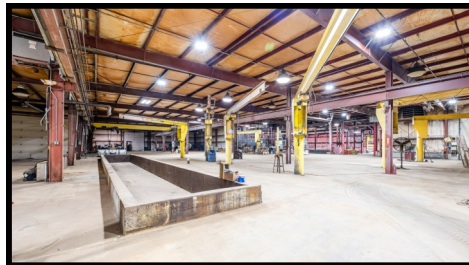
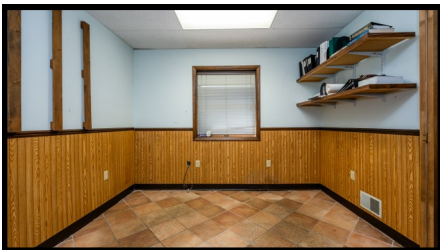
3085 Yore Avenue

Property Type: Industrial
Building Size: 27,528 SF
Lot Dimension: **5.75 ACRES**
Municipality: Sodus Township
MLS# 25017838

Price: \$445,000

Property Overview

- * Situated just off Sodus Parkway with easy access to I-94 & I-196
- * 800 SF newer office building
- * Four overhead doors 12 to 14 feet
- * Ceiling heights 14 to 18 feet
- * Includes eight 1-ton cranes



For more information, please contact:

Dick Donnellan
269.921.0023

Rdonln@hotmail.com

Loren Gerber
269.921.0754

Leg32@aol.com

Many possible uses!



CORE REAL ESTATE, INC.

5750 James Drive
Stevensville, MI 49127
269.429.8001 Phone

www.CoreREI.com