

# OFFICE FOR SALE OR LEASE



## 530 Stephenson Highway

Troy, Michigan

For more information, contact:

**DAN MORROW**

(248) 799 3144

[dmorrow@signatureassociates.com](mailto:dmorrow@signatureassociates.com)

**PAUL HOGE**

(248) 948 0103

[paulhoge@signatureassociates.com](mailto:paulhoge@signatureassociates.com)



**SIGNATURE  
ASSOCIATES**

KNOW SIGNATURE | KNOW RESULTS





# Property Summary



## OFFICE FOR SALE OR LEASE

- Well-maintained, 20,400 square foot office building available
- Highly visible from I-75, including rooftop signage
- Near Oakland Mall at the I-75/14 Mile Road exit
- Great parking ratio, including enclosed garage
- Would consider a lease for full building user
- Seller could remain in part if desired
- Lease Rate: Contact Broker
- Sale Price: \$2,400,000 (\$117.65/sq. ft.)





# Aerial Views







# Aerial Views

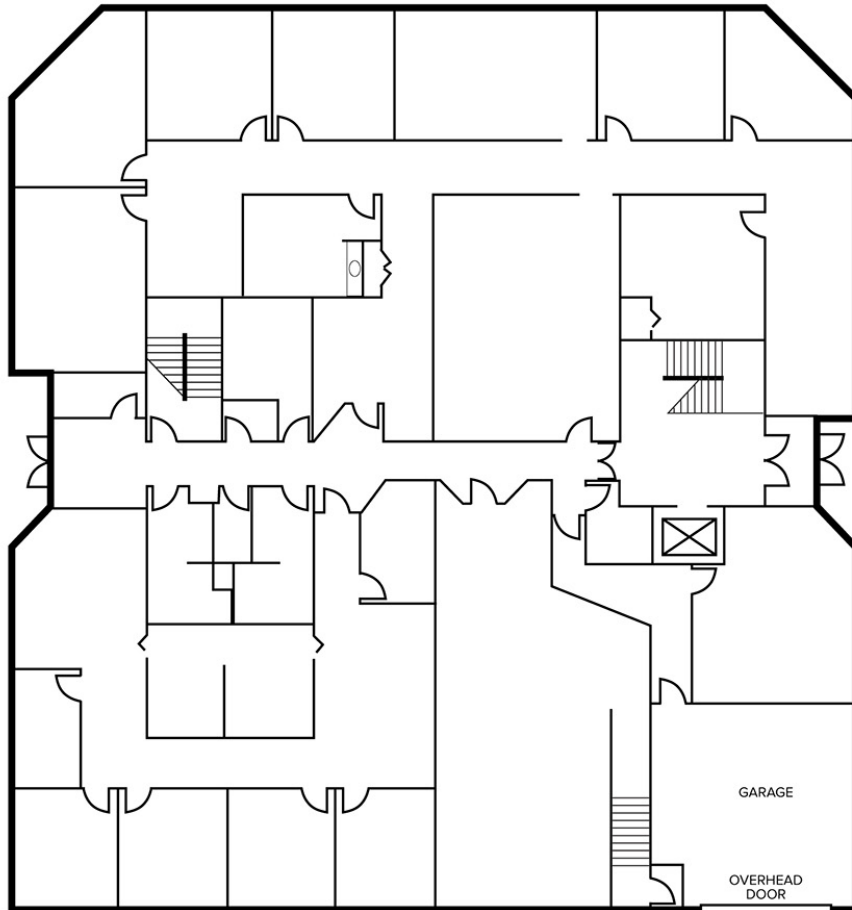




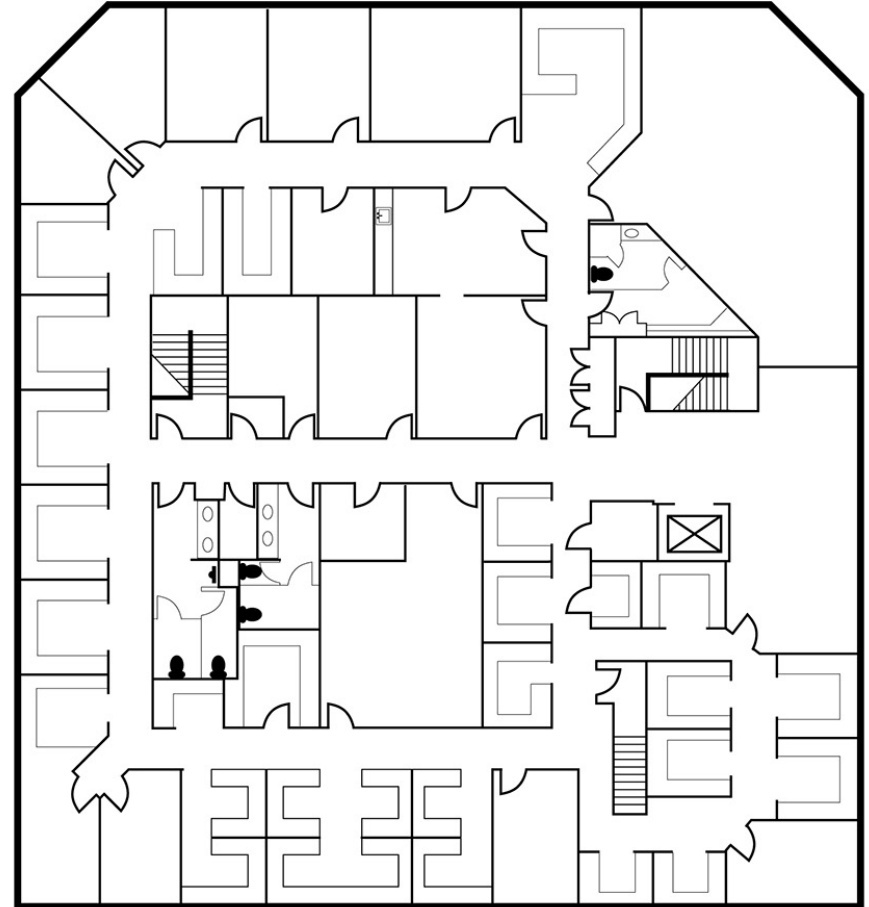


# Floor Plans

First Floor



Second Floor







# Interior Images







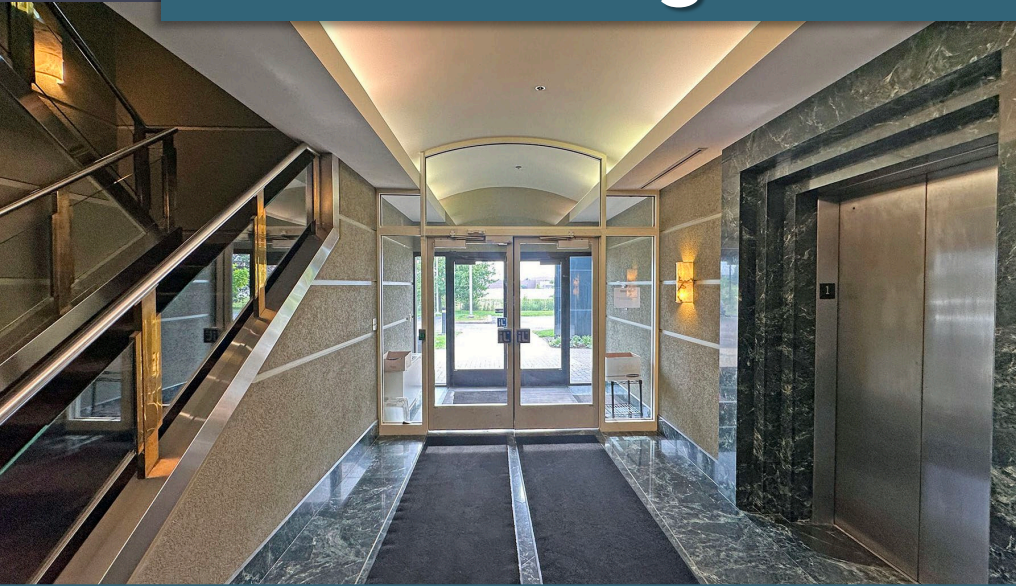
# Interior Images







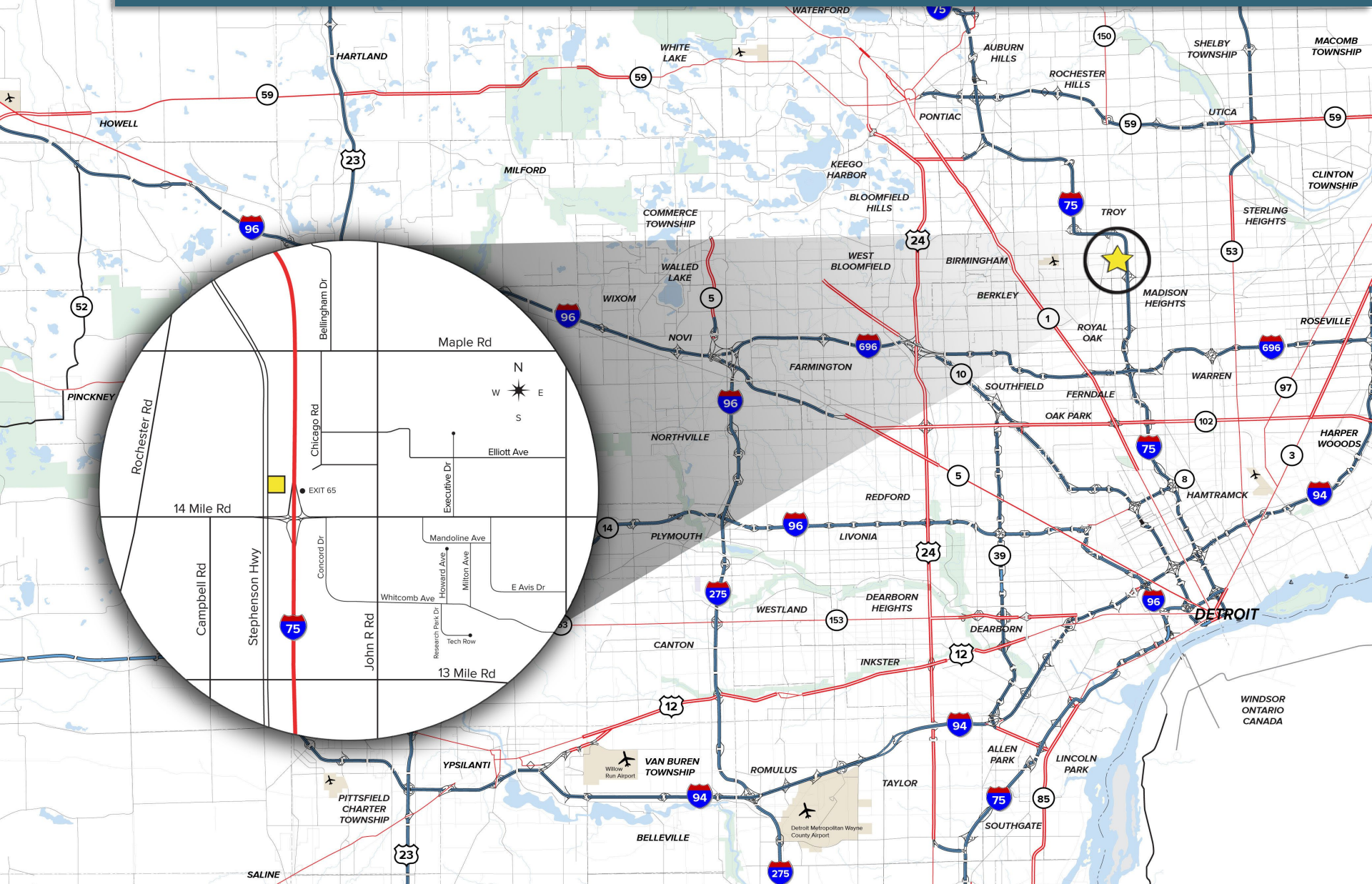
# Interior Images







# Area Map





# 530 Stephenson Highway

Troy, Michigan

For more information, contact:

**DAN MORROW**

(248) 799 3144

[dmorrow@signatureassociates.com](mailto:dmorrow@signatureassociates.com)

**PAUL HOGE**

(248) 948 0103

[paulhoge@signatureassociates.com](mailto:paulhoge@signatureassociates.com)

**SIGNATURE ASSOCIATES**

One Towne Square, Suite 1200

Southfield, Michigan 48076

(248) 948 9000

[signatureassociates.com](http://signatureassociates.com)



**SIGNATURE  
ASSOCIATES**

KNOW SIGNATURE | KNOW RESULTS