



# 6250 S Cedar St

Lansing, Michigan 48911

## Property Highlights

- Close proximity to Target, Panera, and major highway access, providing convenient shopping options and seamless connectivity for both customers and businesses.
- High-visibility location
- Excellent accessibility
- Ample parking
- Modern facilities

## Offering Summary

Lease Rate:	\$12 SF/yr (NNN)
Building Size:	7,845 SF
Available SF:	865 - 2,500 SF
Lot Size:	

Spaces	Lease Rate	Space Size
Suite 11	\$12.00 SF/yr	2,500 SF
Suite 14	\$12.00 SF/yr	2,480 SF
Suite 17C	\$12.00 SF/yr	2,000 SF
Suite 16B	\$12.00 SF/yr	865 SF

## For More Information

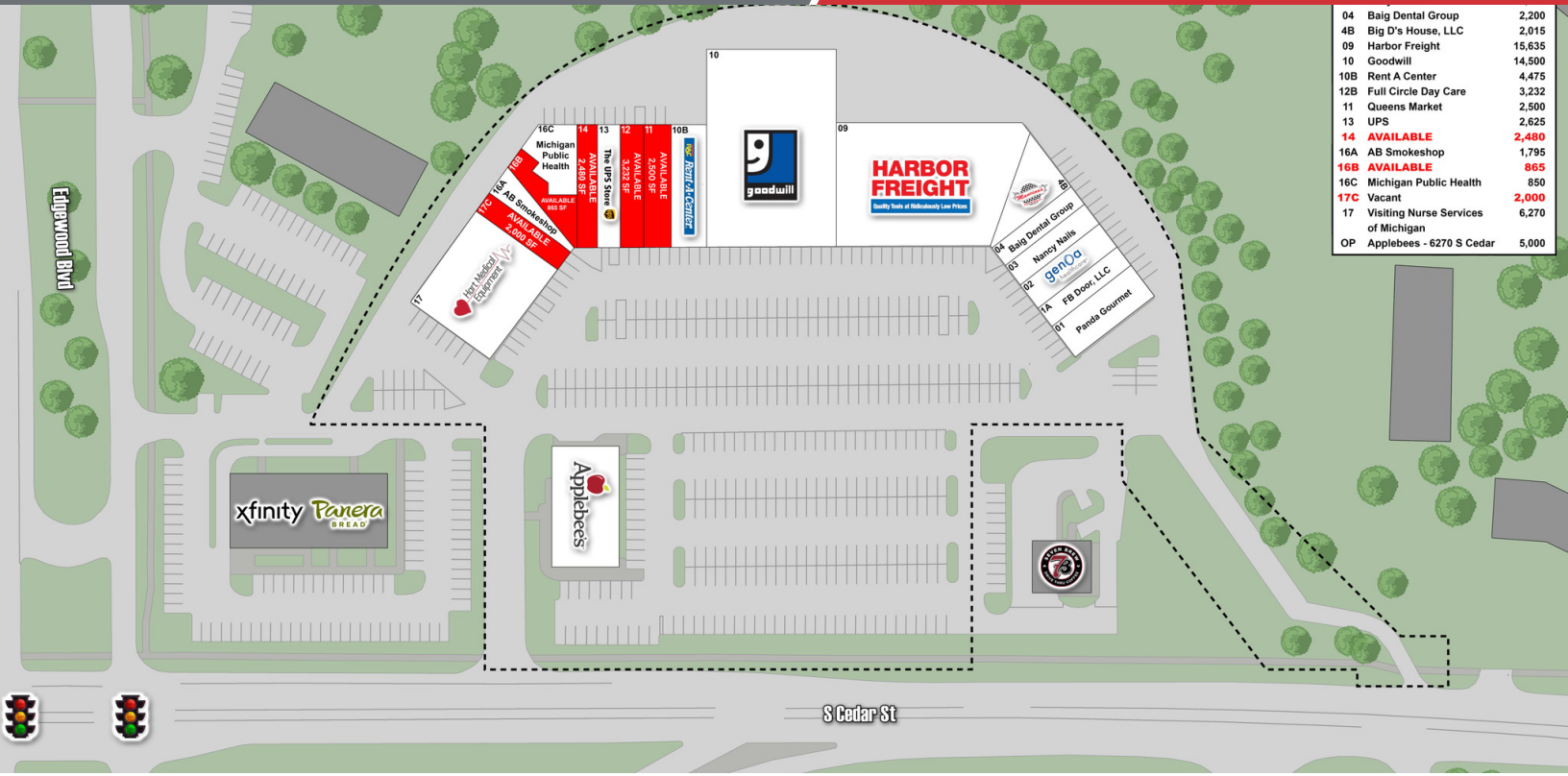


**Ryan Shapiro**

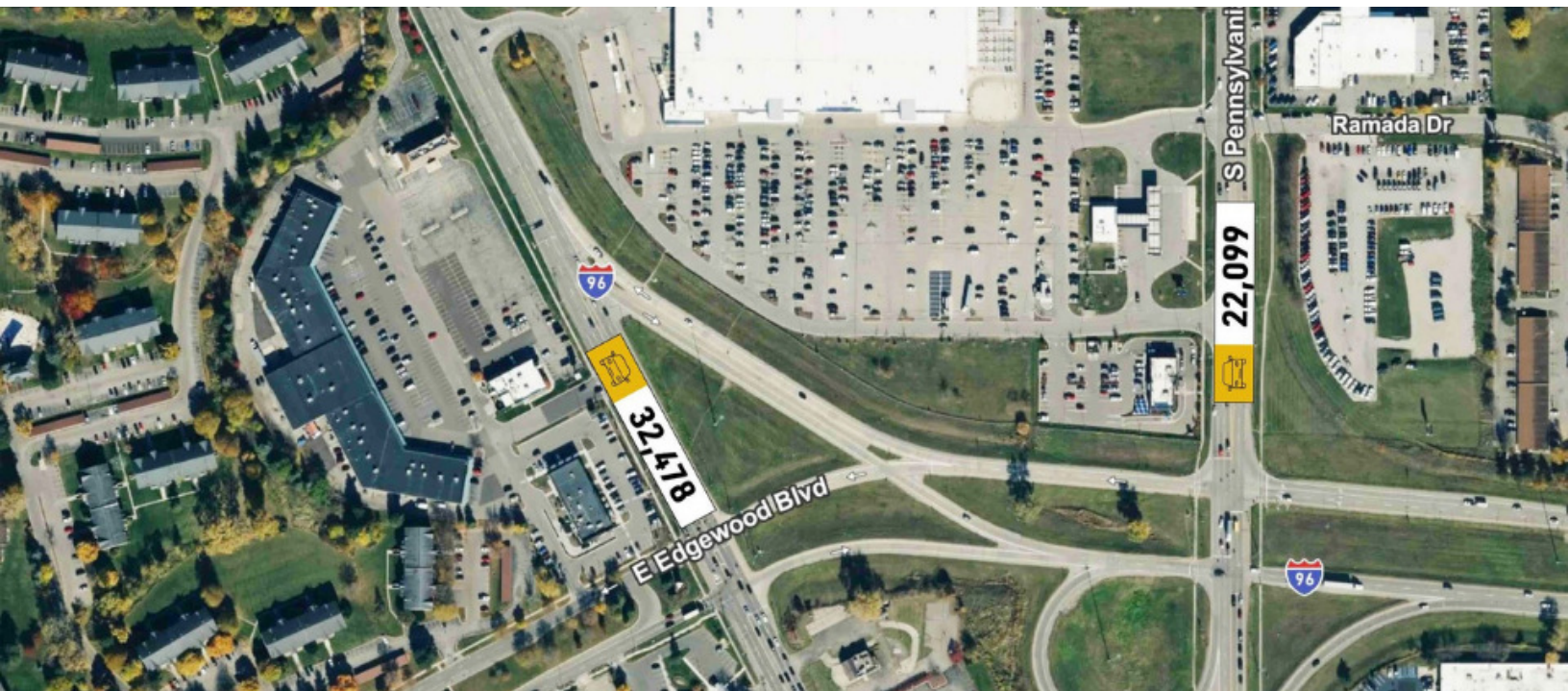
Commercial Advisor

O: 517 487 9222 | C: 517 894 4204

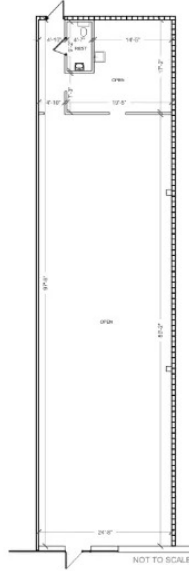
ryanshapiro@naimidmichigan.com



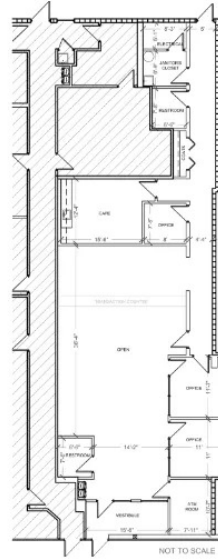
NO WARRANTY OR REPRESENTATION, EXPRESS OR IMPLIED, IS MADE AS TO THE ACCURACY OF THE INFORMATION CONTAINED HEREIN, AND THE SAME IS SUBMITTED SUBJECT TO ERRORS, OMISSIONS, CHANGE OF PRICE, RENTAL OR OTHER CONDITIONS, PRIOR SALE, LEASE OR FINANCING, OR WITHDRAWAL WITHOUT NOTICE, AND OF ANY SPECIAL LISTING CONDITIONS IMPOSED BY OUR PRINCIPALS. NO WARRANTIES OR REPRESENTATIONS ARE MADE AS TO THE CONDITION OF THE PROPERTY OR ANY HAZARDS CONTAINED THEREIN ARE INTENDED TO BE IMPLIED.



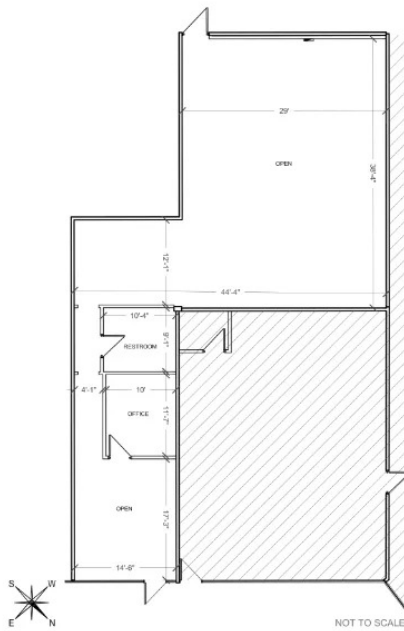
**SUITE 11**  
2,500 SF



**SUITE 14**  
2,480 SF

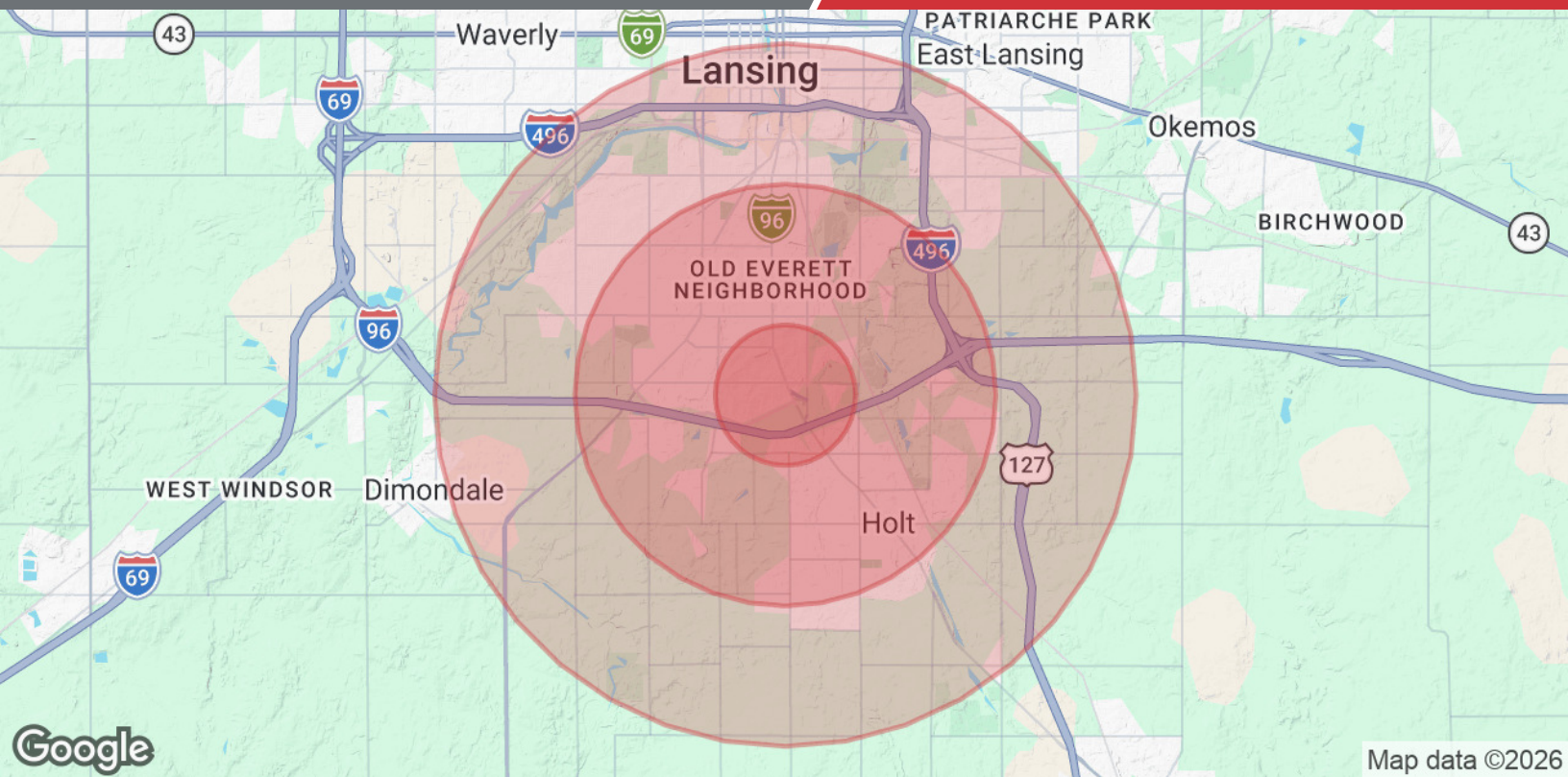


**SUITE 17C**  
2,000 SF



**SUITE 16B**  
865 SF





Population	1 Mile	3 Miles	5 Miles
Total Population	7,678	62,076	122,401
Average Age	36.8	36.4	35.7
Average Age (Male)	39.9	35.0	34.7
Average Age (Female)	36.5	37.8	36.9
Households & Income	1 Mile	3 Miles	5 Miles
Total Households	3,676	27,501	52,353
# of Persons per HH	2.1	2.3	2.3
Average HH Income	\$54,273	\$71,669	\$73,951
Average House Value	\$145,462	\$157,002	\$166,630

2023 American Community Survey (ACS)