

12400 DOANE ROAD
SOUTH LYON, MICHIGAN

INDUSTRIAL FOR SUBLEASE
19,260 Square Feet Available



**SIGNATURE
ASSOCIATES**
KNOW SIGNATURE | KNOW RESULTS



PROPERTY FEATURES

- 19,260 square feet available
- 1,260 square feet office
- 14' clear height
- (1) 14' x 14' grade level door, (1) truckwell
- (1) 3-ton crane that travels the width of the building (180')
- 400 amps, 240 volts, 3-phase, (3) buss ducts
- Great manufacturing space at below market rent
- Available January 1, 2026, through January 31, 2028
- Sublease Rent: \$11,650/month Gross



For more information, please contact:

CHRIS D'ANGELO
(248) 948 0109
cdangelo@signatureassociates.com

SIGNATURE ASSOCIATES
One Towne Square, Suite 1200
Southfield, MI 48076
www.signatureassociates.com

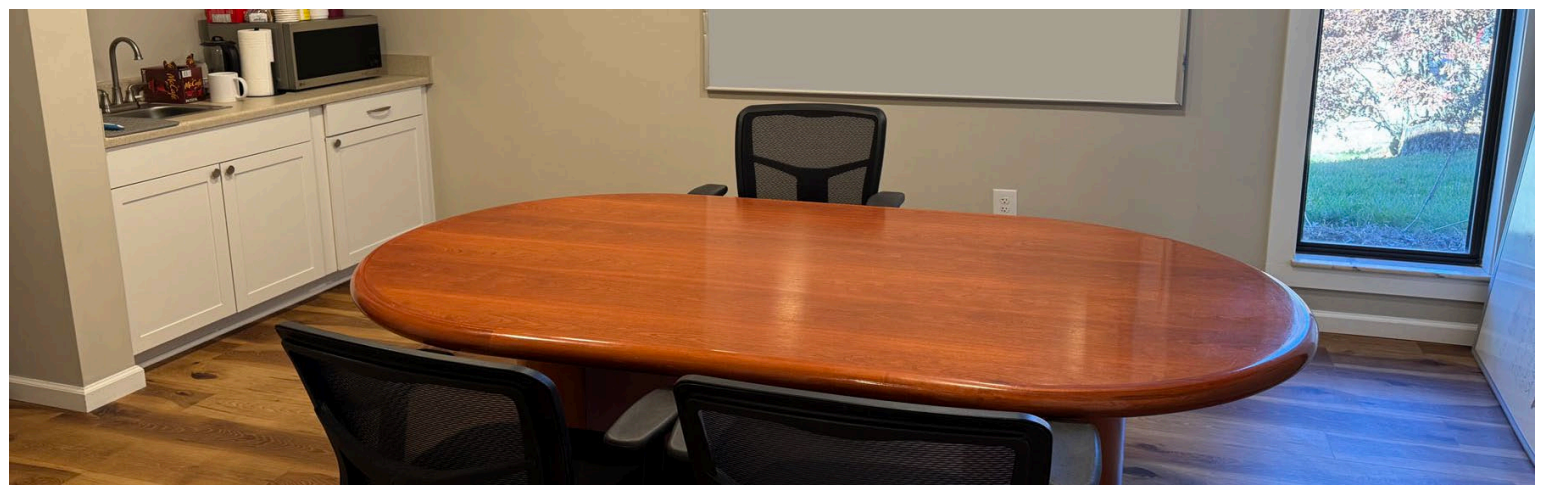
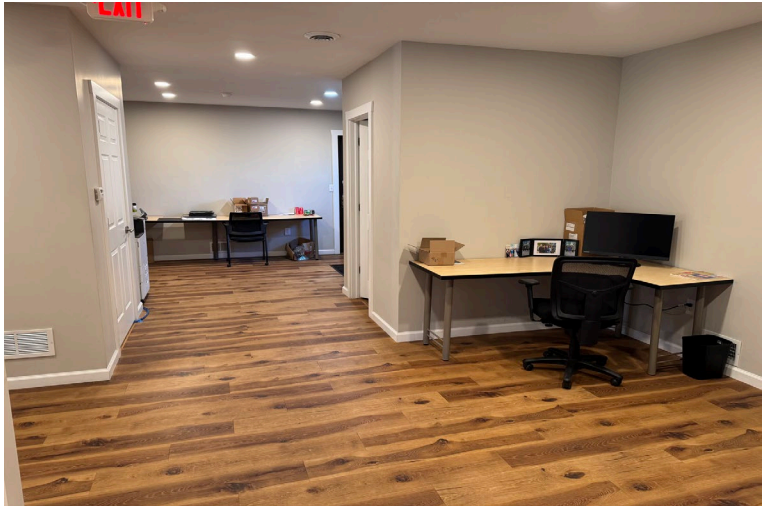
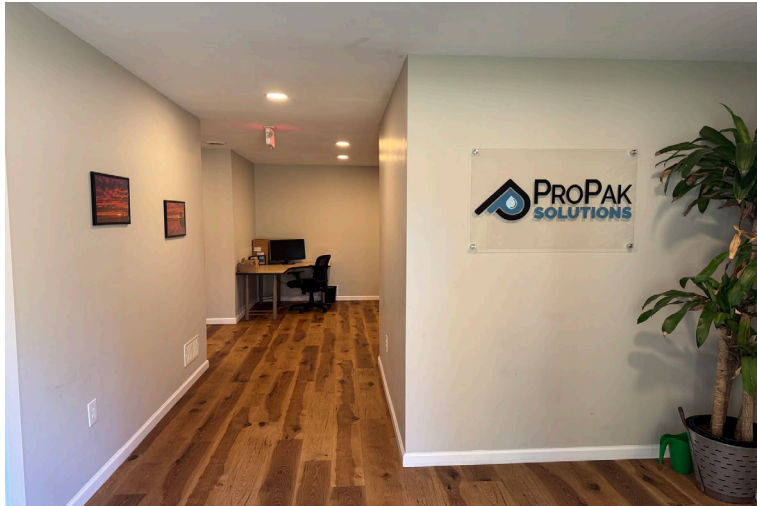
Information is subject to verification and no liability for errors or omissions is assumed. Price is subject to change and listing withdrawal.

12400 Doane Road – South Lyon, Michigan

Industrial For Sublease

19,260
Square Feet
AVAILABLE

Interior Photos – Office Space



For more information, please contact:

CHRIS D'ANGELO
(248) 948 0109
cdangelo@signatureassociates.com

SIGNATURE ASSOCIATES
One Towne Square, Suite 1200
Southfield, MI 48076
www.signatureassociates.com

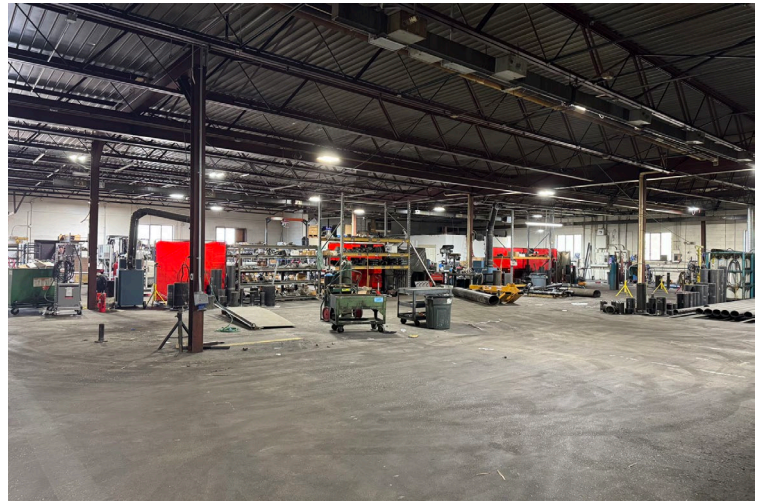
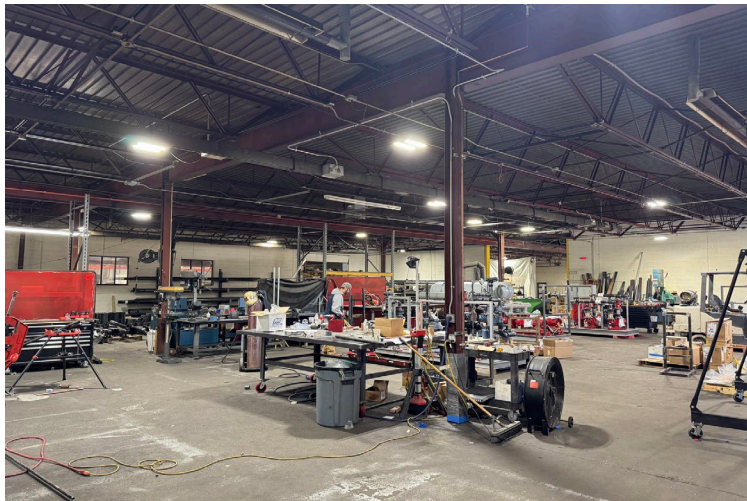
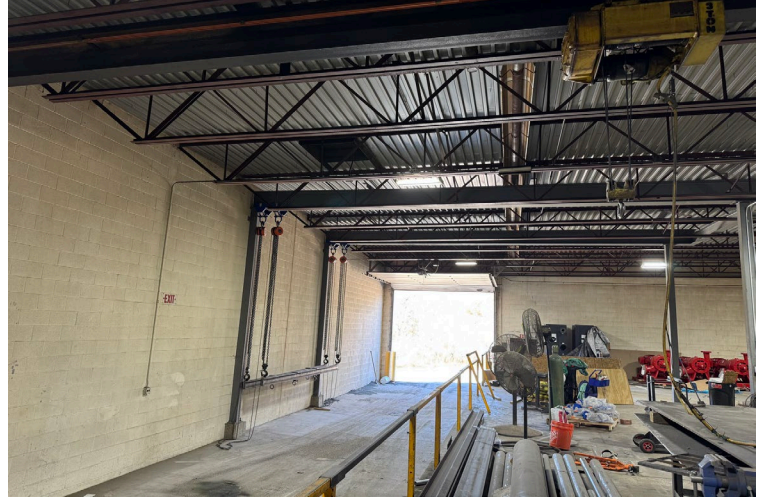
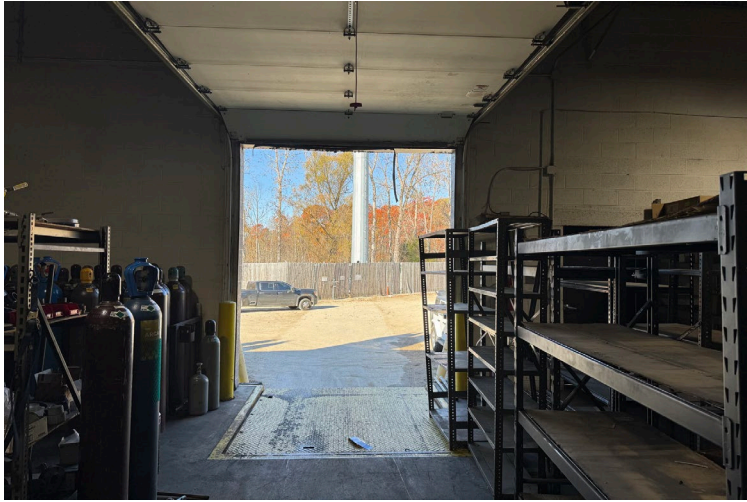
Information is subject to verification and no liability for errors or omissions is assumed. Price is subject to change and listing withdrawal.

12400 Doane Road – South Lyon, Michigan

Industrial For Sublease

19,260
Square Feet
AVAILABLE

Interior Photos – Warehouse Space



For more information, please contact:

CHRIS D'ANGELO
(248) 948 0109
cdangelo@signatureassociates.com

SIGNATURE ASSOCIATES
One Towne Square, Suite 1200
Southfield, MI 48076
www.signatureassociates.com

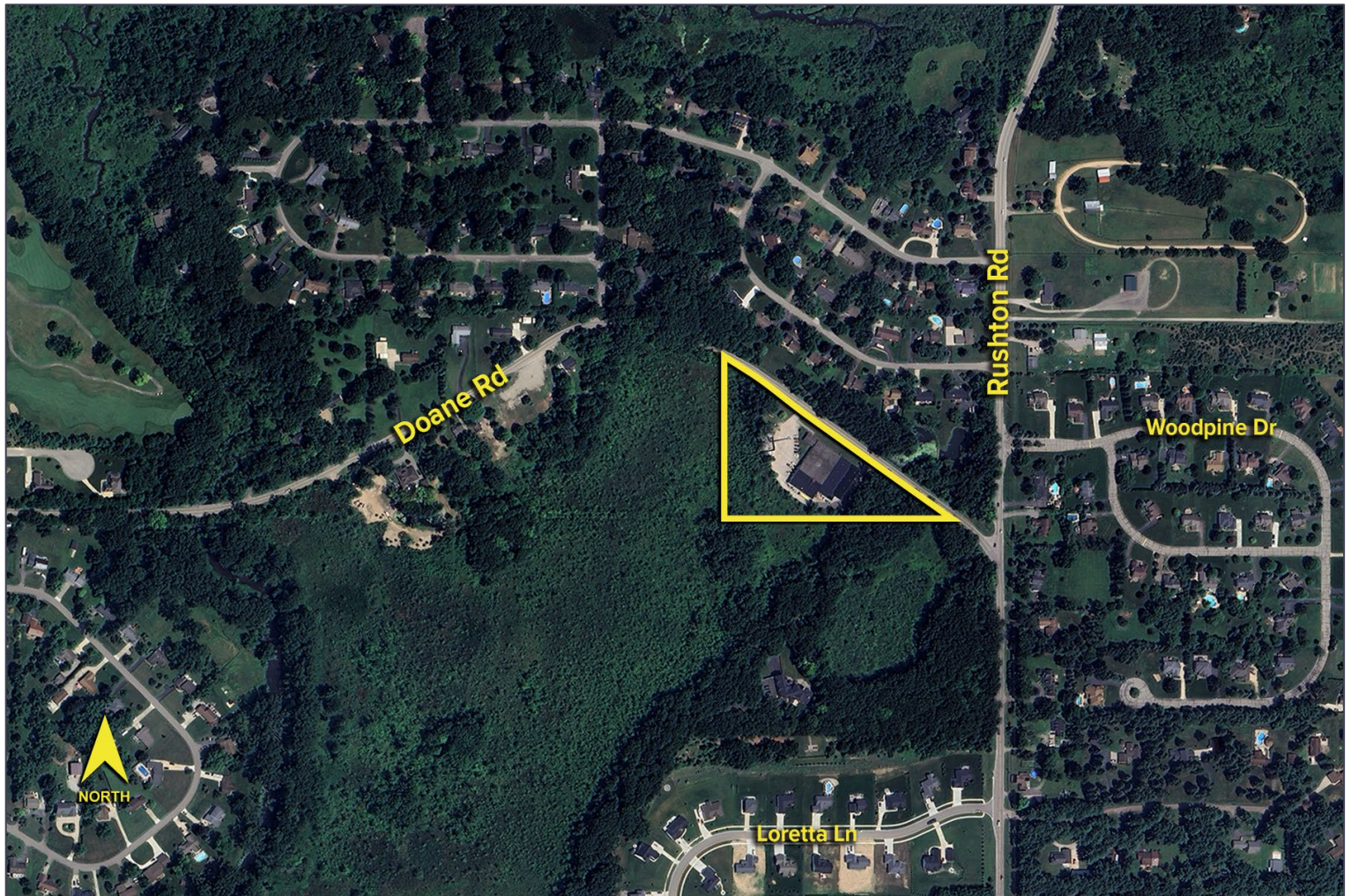
Information is subject to verification and no liability for errors or omissions is assumed. Price is subject to change and listing withdrawal.

12400 Doane Road – South Lyon, Michigan

Industrial For Sublease

19,260
Square Feet
AVAILABLE

Aerial



For more information, please contact:

CHRIS D'ANGELO
(248) 948 0109
cdangelo@signatureassociates.com

SIGNATURE ASSOCIATES
One Towne Square, Suite 1200
Southfield, MI 48076
www.signatureassociates.com

Information is subject to verification and no liability for errors or omissions is assumed. Price is subject to change and listing withdrawal.