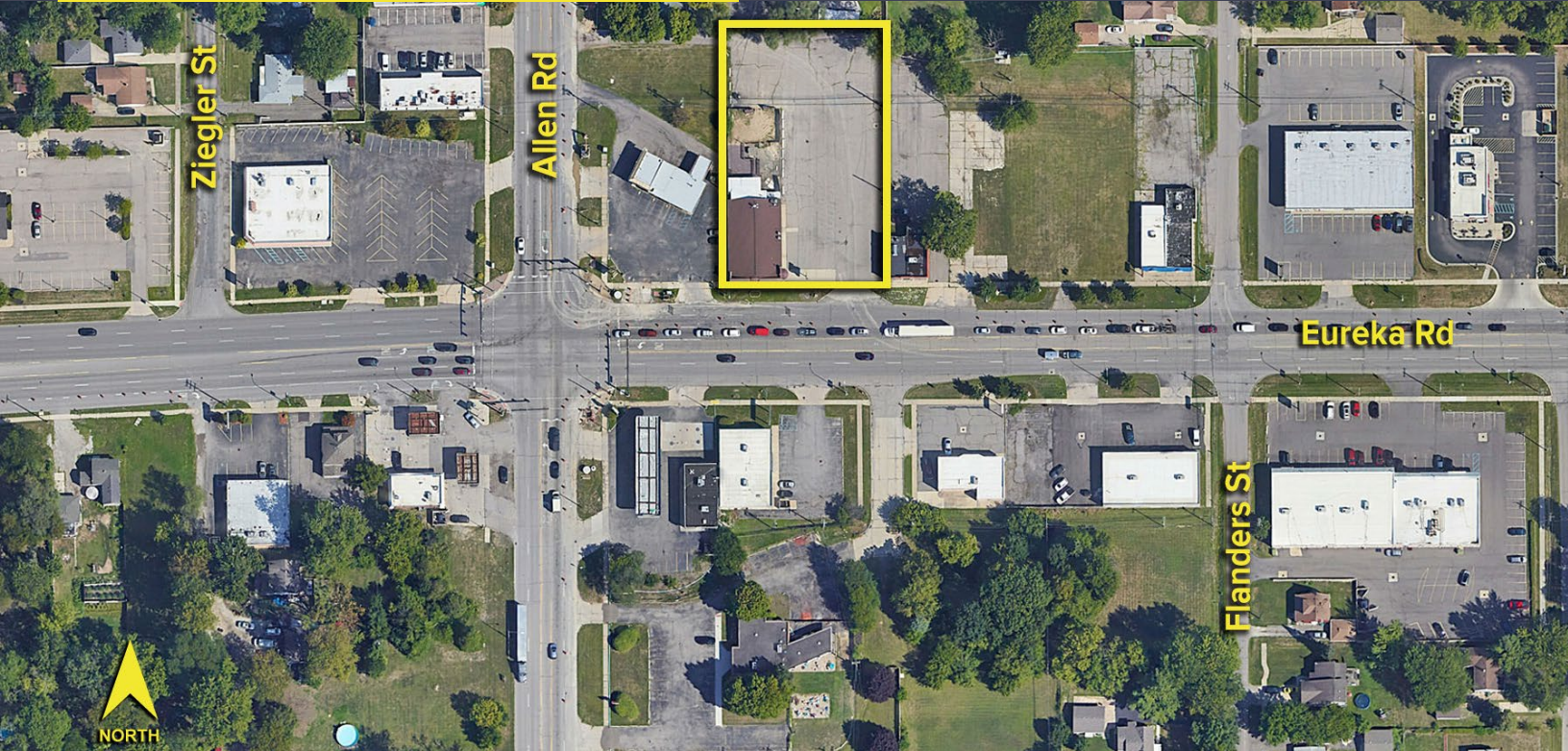


19364 EUREKA ROAD
SOUTHGATE, MICHIGAN



**SIGNATURE
ASSOCIATES**
KNOW SIGNATURE | KNOW RESULTS

LAND FOR SALE
0.87 Acres Available



PROPERTY FEATURES

- 0.87 acres available
- Assemblage up to 2.12 acres
- Build-to-suit, ground lease, or purchase on Eureka Road in Southgate
- High traffic and great demographics, nearby national retailers, regional mall
- Access to I-75 and Detroit Metro Airport make this site ideal for many fast food, retail, office or medical uses
- C-2 Zoning
- Sale Price: \$299,000



For more information, please contact:

JUSTIN GAFFREY
(248) 799 3143
jgaffrey@signatureassociates.com

SIGNATURE ASSOCIATES
One Towne Square, Suite 1200
Southfield, MI 48076
www.signatureassociates.com

Site Plan



For more information, please contact:
JUSTIN GAFFREY
(248) 799 3143
jgaffrey@signatureassociates.com

SIGNATURE ASSOCIATES
One Towne Square, Suite 1200
Southfield, MI 48076
www.signatureassociates.com

19364 Eureka Road – Southgate, Michigan

Land For Sale

0.87
Acres
AVAILABLE

| DEMOGRAPHICS | | |
|--------------|------------|----------------|
| | POPULATION | MED. HH INCOME |
| 1 MILE | 5,808 | \$67,114 |
| 3 MILE | 81,712 | \$67,278 |
| 5 MILE | 222,416 | \$68,218 |

| TRAFFIC COUNTS (TWO-WAY) | |
|--------------------------|--------------------------------|
| 35,401 | Eureka Rd. E of Dix Toledo Rd. |
| 34,343 | Eureka Rd. W of Dix Toledo Rd. |
| 28,274 | Dix Toledo Rd. N of Eureka Rd. |
| 24,278 | Dix Toledo Rd. S of Eureka Rd. |



For more information, please contact:
JUSTIN GAFFREY
 (248) 799 3143
 jgaffrey@signatureassociates.com

SIGNATURE ASSOCIATES
 One Towne Square, Suite 1200
 Southfield, MI 48076
 www.signatureassociates.com