

665 HUPP AVENUE
JACKSON, MICHIGAN

INDUSTRIAL FOR LEASE
66,898 Square Feet Available



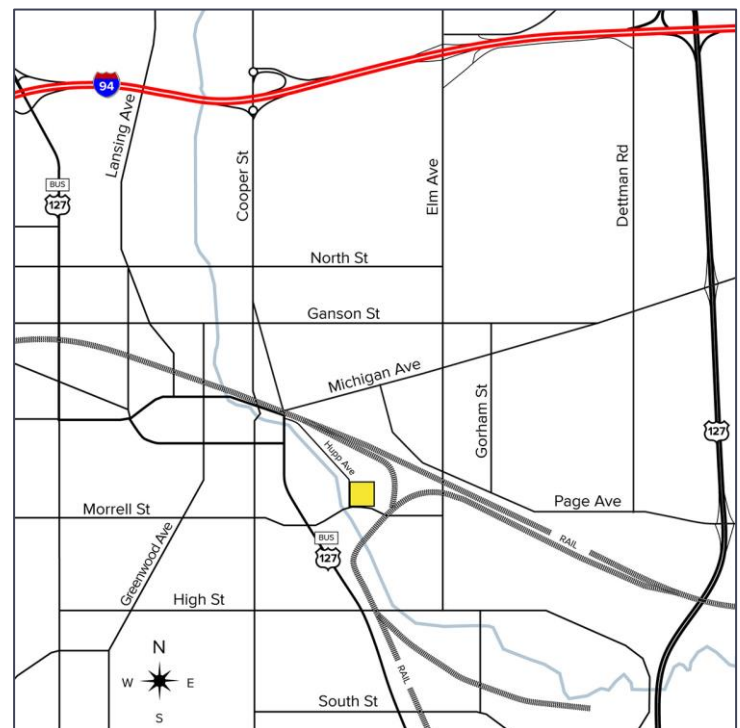
**SIGNATURE
ASSOCIATES**
KNOW SIGNATURE | KNOW RESULTS

FORMER LEFERE FORGE



PROPERTY FEATURES

- 66,898 square feet available
- 1,000 square feet of office space
- 10' - 40' clear height
- (36) 14' x 16' grade level doors, (2) truckwells
- (1) 5-Ton, (2) 10-Ton fully operational cranes with 40' clear
- Zoned I-2
- Located near downtown Jackson
- Heavy power on-site
- Excellent outdoor storage
- Lease Rate: \$2.00/sq. ft. NNN



For more information, please contact:

JOE STACK
(248) 359 0615
jstack@signatureassociates.com

CHRIS MONSOUR
(248) 948 0107
cmonsour@signatureassociates.com

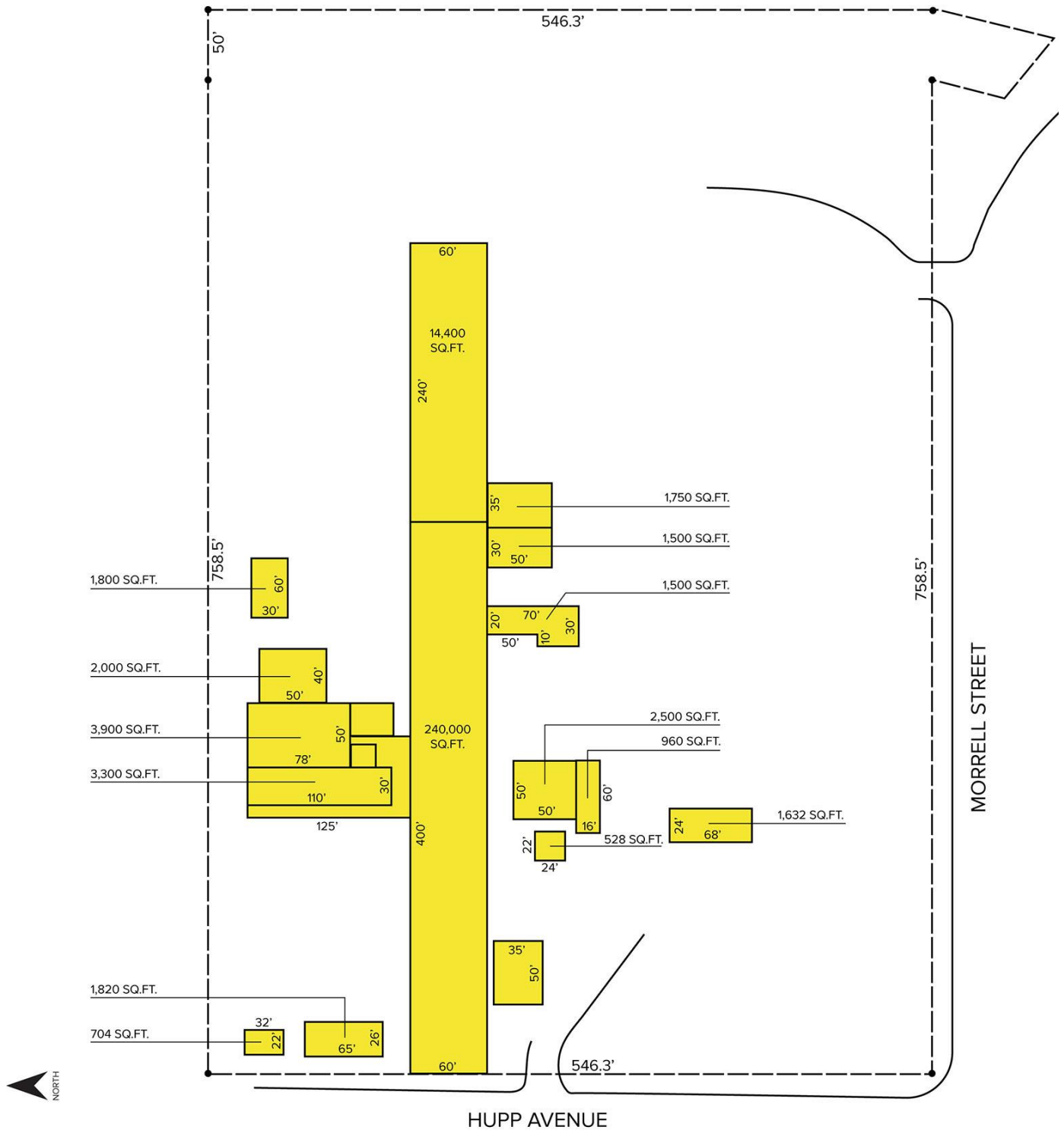
SIGNATURE ASSOCIATES
One Towne Square, Suite 1200
Southfield, MI 48076
www.signatureassociates.com

665 Hupp Avenue – Jackson, Michigan

Industrial For Lease

66,898
Square Feet
AVAILABLE

Site Plan



For more information, please contact:

JOE STACK
(248) 359 0615
jstack@signatureassociates.com

CHRIS MONSOUR
(248) 948 0107
cmonsour@signatureassociates.com

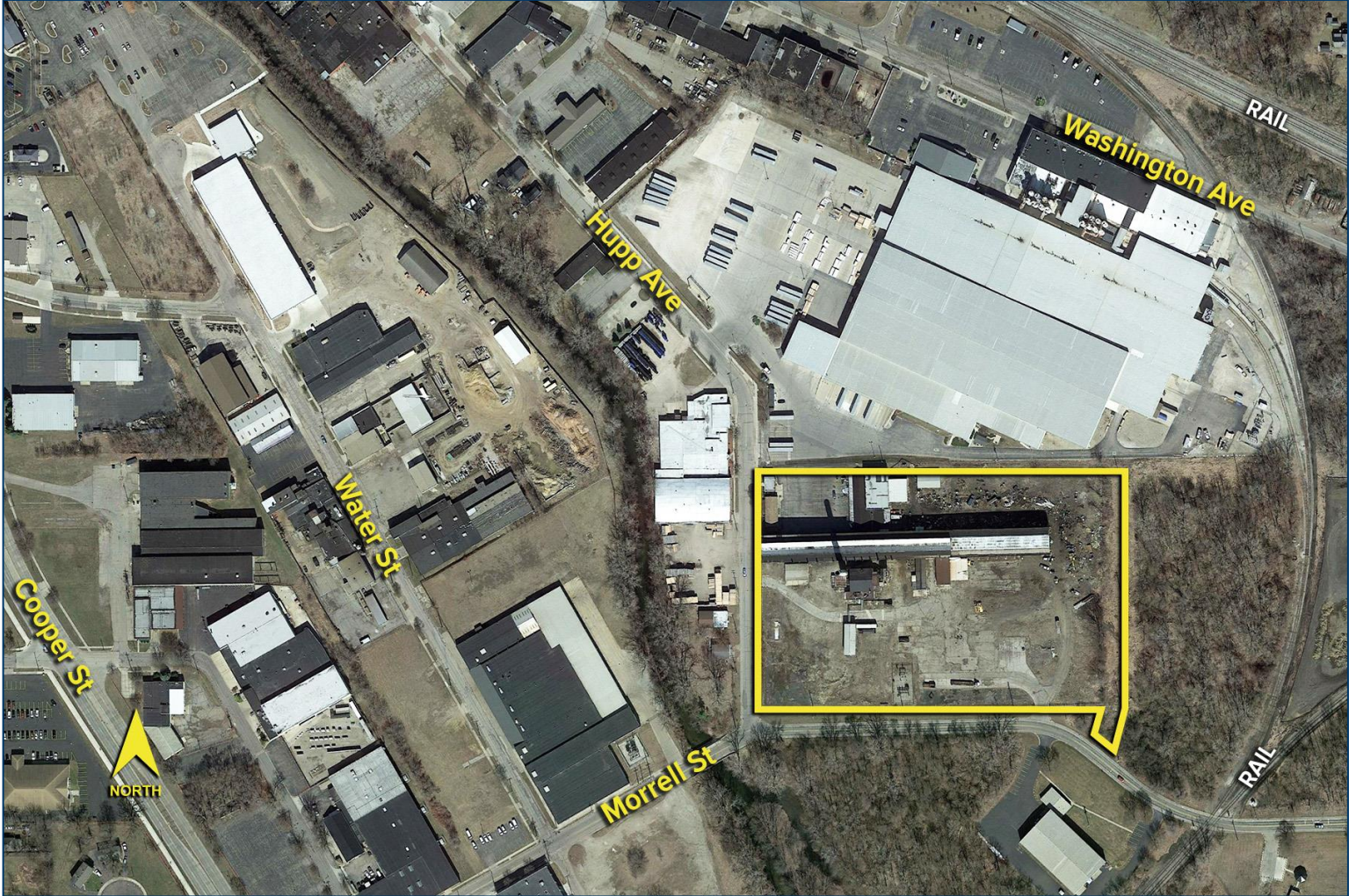
SIGNATURE ASSOCIATES
One Towne Square, Suite 1200
Southfield, MI 48076
www.signatureassociates.com

665 Hupp Avenue – Jackson, Michigan

Industrial For Lease

66,898
Square Feet
AVAILABLE

Aerial



For more information, please contact:

JOE STACK
(248) 359 0615
jstack@signatureassociates.com

CHRIS MONSOUR
(248) 948 0107
cmonsour@signatureassociates.com

SIGNATURE ASSOCIATES
One Towne Square, Suite 1200
Southfield, MI 48076
www.signatureassociates.com

Information is subject to verification and no liability for errors or omissions is assumed. Price is subject to change and listing withdrawal.