

31550 NORTHWESTERN HWY.
FARMINGTON HILLS, MICHIGAN

PREMIUM OFFICE FOR LEASE
1,908 & 3,498 Square Feet Available



**SIGNATURE
ASSOCIATES**
KNOW SIGNATURE | KNOW RESULTS

QUADRANGLE BUILDING



PROPERTY FEATURES

- First floor suites of 1,908 & 3,498 rentable square feet available
- Ideal location – perfect for professional firm
- 2-story building with on-site owner/management
- Premium finishes and upgraded common areas
- Bank branch in building and restaurants nearby
- Ample parking
- Outdoor lounge area
- Lease Rate: \$19.00/sq. ft. G+E



For more information, please contact:

CHRIS SECONTINE
(248) 799 3174
csecontine@signatureassociates.com

SIGNATURE ASSOCIATES
One Towne Square, Suite 1200
Southfield, MI 48076
www.signatureassociates.com

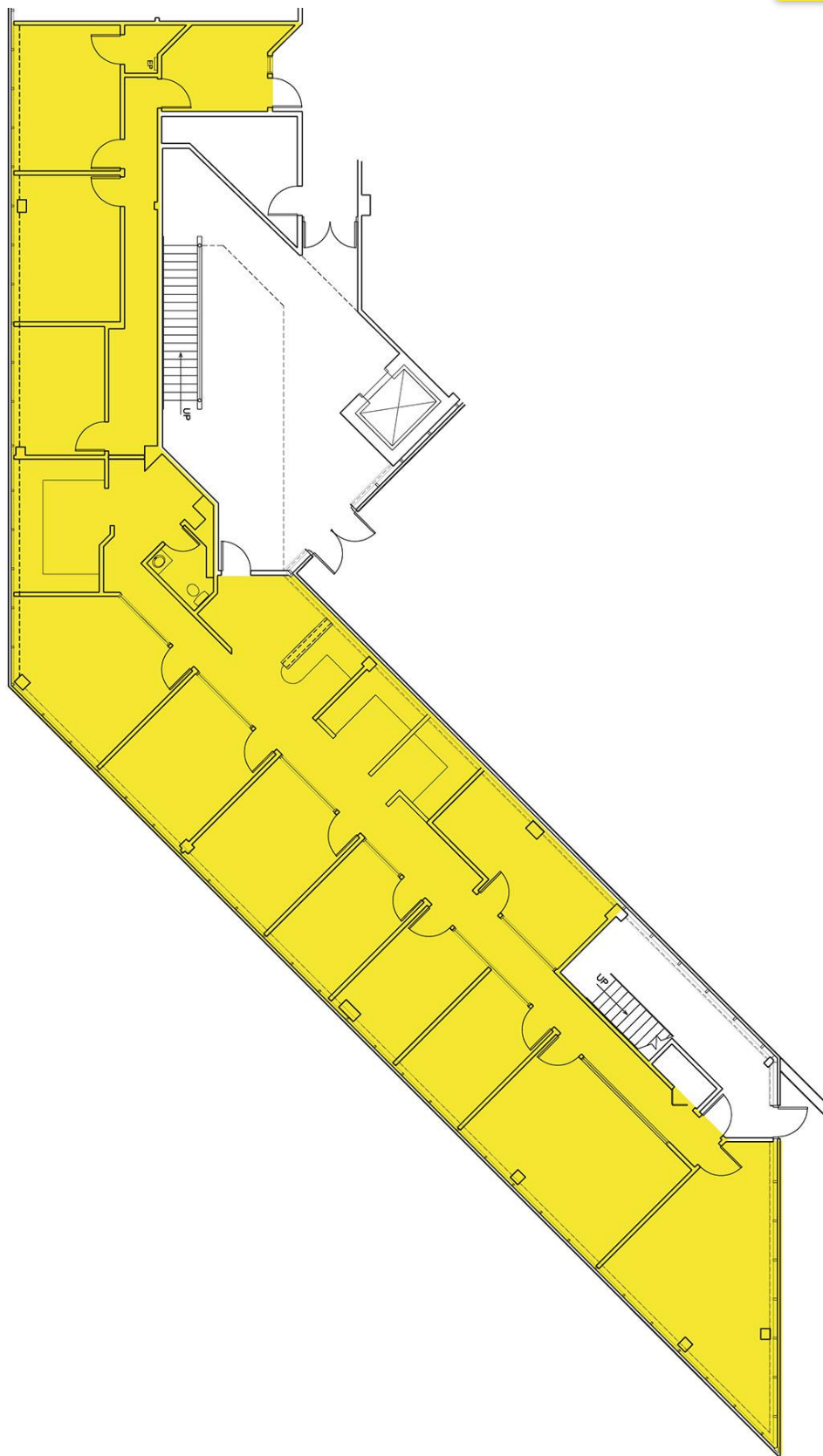
31550 Northwestern Hwy. – Farmington Hills, MI

Office For Lease

1,908 & 3,498
Square Feet
AVAILABLE

Suite 110

3,498 Square Feet



For more information, please contact:

CHRIS SECONTINE

(248) 799 3174

csecontine@signatureassociates.com

SIGNATURE ASSOCIATES

One Towne Square, Suite 1200

Southfield, MI 48076

www.signatureassociates.com

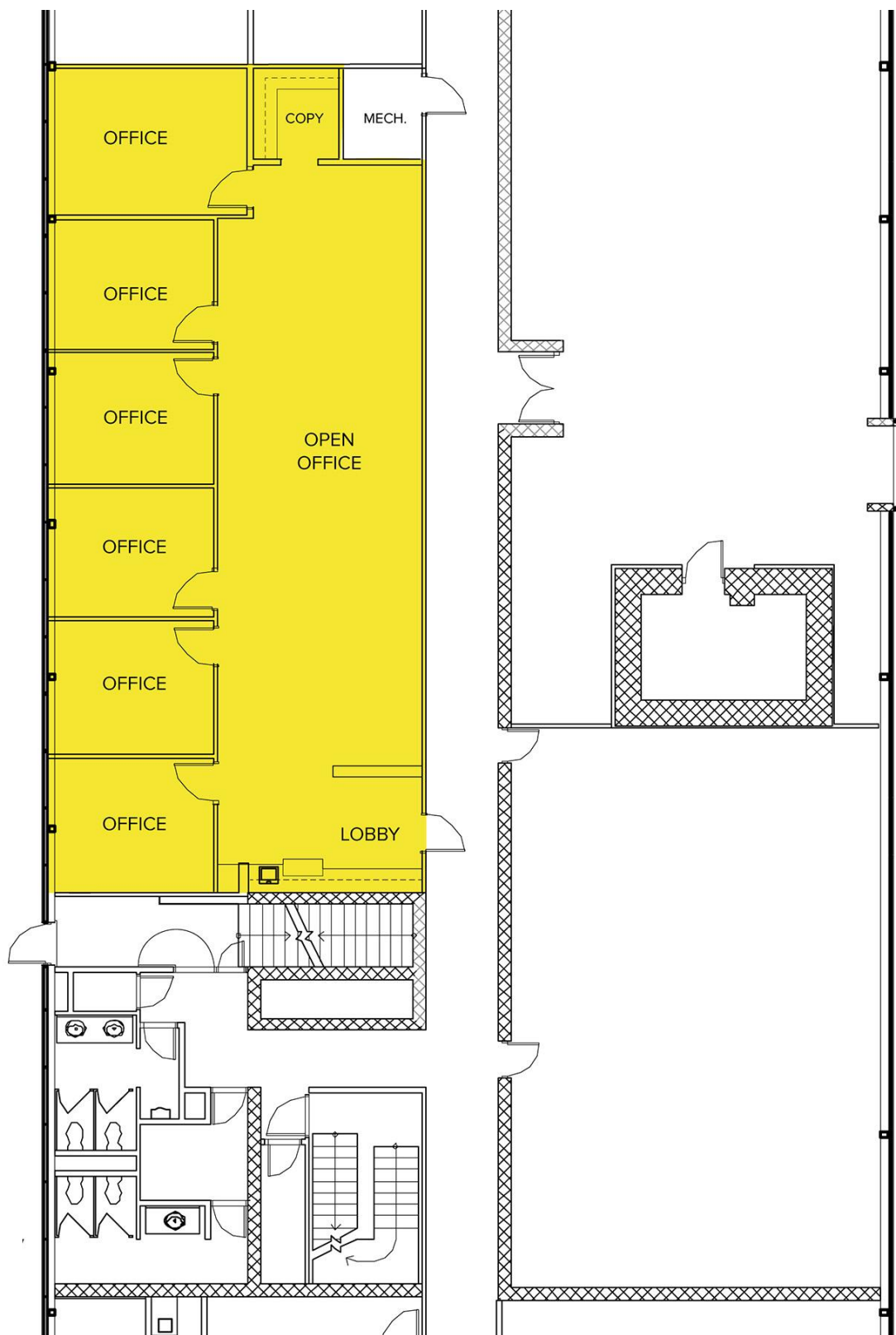
Information is subject to verification and no liability for errors or omissions is assumed. Price is subject to change and listing withdrawal.

31550 Northwestern Hwy. – Farmington Hills, MI

Office For Lease

1,908 & 3,498
Square Feet
AVAILABLE

Suite 135
1,908 Square Feet



For more information, please contact:

CHRIS SECONTINE

(248) 799 3174

csecontine@signatureassociates.com

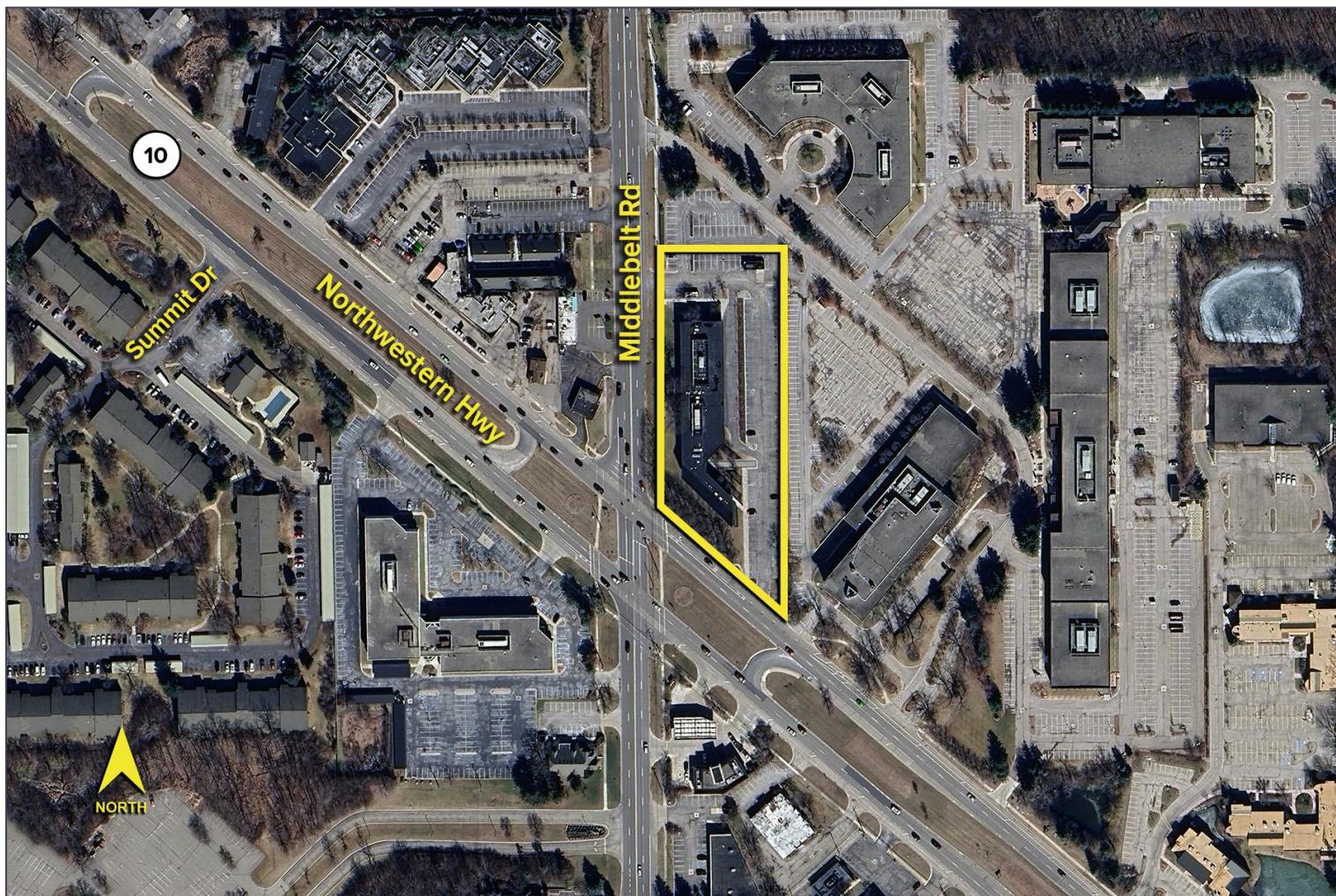
SIGNATURE ASSOCIATES
One Towne Square, Suite 1200
Southfield, MI 48076
www.signatureassociates.com

Information is subject to verification and no liability for errors or omissions is assumed. Price is subject to change and listing withdrawal.

31550 Northwestern Hwy. – Farmington Hills, MI
Office For Lease

1,908 & 3,498
Square Feet
AVAILABLE

Aerial



For more information, please contact:

CHRIS SECONTINE

(248) 799 3174

csecontine@signatureassociates.com

SIGNATURE ASSOCIATES
One Towne Square, Suite 1200
Southfield, MI 48076
www.signatureassociates.com

Information is subject to verification and no liability for errors or omissions is assumed. Price is subject to change and listing withdrawal.