

47000 LIBERTY DRIVE
WIXOM, MICHIGAN

HI-TECH FOR SALE OR LEASE
24,655 Square Feet Available



**SIGNATURE
ASSOCIATES**
KNOW SIGNATURE | KNOW RESULTS

WIXOM BUSINESS CENTER



PRICE REDUCED

PROPERTY FEATURES

- 24,655 square feet available
- 16,765 square foot two-story office
- 20' clear height
- (2) 12' x 14' grade level doors
- Corporate image with Beck Road frontage
- 0.5 miles north of I-96 freeway
- Extremely well-maintained
- Open office floor plan
- Fully air-conditioned shop
- 47-car parking
- 600 amps, 208/480 volt, 3-phase power
- Lease Rate: \$9.00/sq. ft. NNN
- Sale Price: \$2,342,225 (\$95.00/sq. ft.)



For more information, please contact:

JIM MONTGOMERY
(248) 359 0614

jmontgomery@signatureassociates.com

CHRISTOPHER M. D'ANGELO
(248) 948 0109

cdangelo@signatureassociates.com

SIGNATURE ASSOCIATES
One Towne Square, Suite 1200
Southfield, MI 48076
www.signatureassociates.com

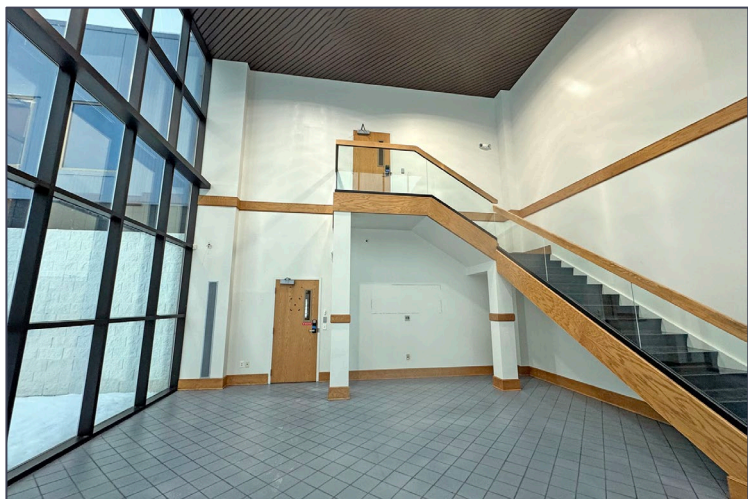
Information is subject to verification and no liability for errors or omissions is assumed. Price is subject to change and listing withdrawal.

47000 Liberty Drive – Wixom, Michigan

Hi-Tech For Sale or Lease

24,655
Square Feet
AVAILABLE

Interior Photos



For more information, please contact:

JIM MONTGOMERY

(248) 359 0614

jmontgomery@signatureassociates.com

CHRISTOPHER M. D'ANGELO

(248) 948 0109

cdangelo@signatureassociates.com

SIGNATURE ASSOCIATES

One Towne Square, Suite 1200

Southfield, MI 48076

www.signatureassociates.com

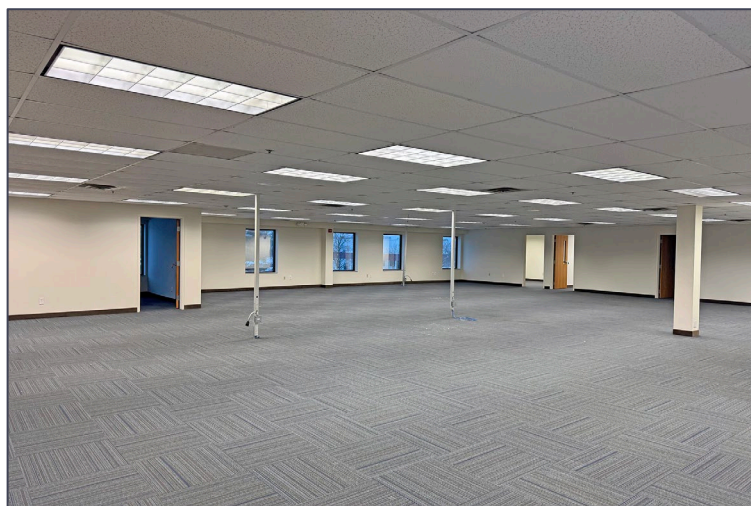
Information is subject to verification and no liability for errors or omissions is assumed. Price is subject to change and listing withdrawal.

47000 Liberty Drive – Wixom, Michigan

Hi-Tech For Sale or Lease

24,655
Square Feet
AVAILABLE

Interior Photos



For more information, please contact:

JIM MONTGOMERY

(248) 359 0614

jmontgomery@signatureassociates.com

CHRISTOPHER M. D'ANGELO

(248) 948 0109

cdangelo@signatureassociates.com

SIGNATURE ASSOCIATES

One Towne Square, Suite 1200

Southfield, MI 48076

www.signatureassociates.com

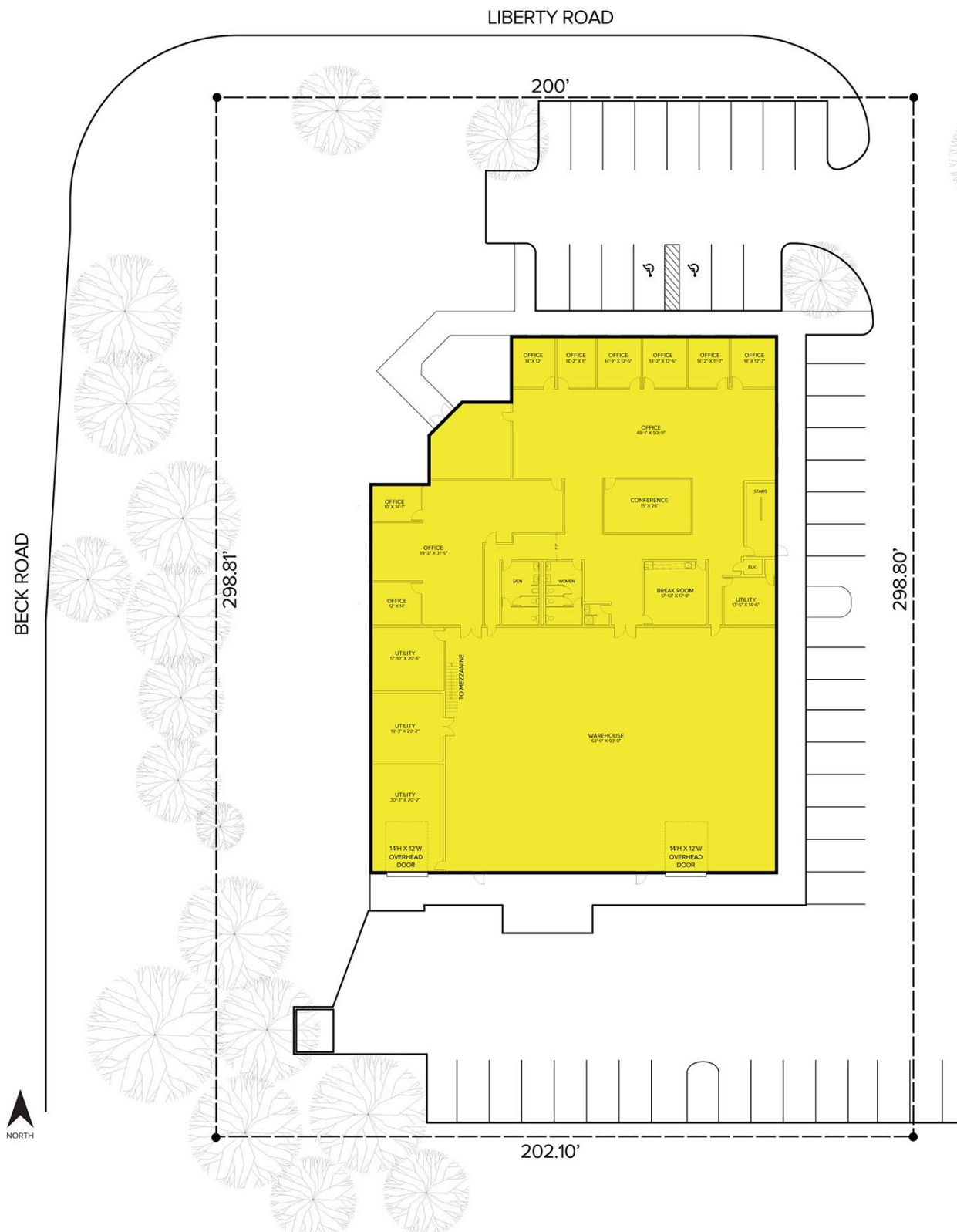
Information is subject to verification and no liability for errors or omissions is assumed. Price is subject to change and listing withdrawal.

47000 Liberty Drive – Wixom, Michigan

Hi-Tech For Sale or Lease

24,655
Square Feet
AVAILABLE

Site Plan



For more information, please contact:

JIM MONTGOMERY

(248) 359 0614

jmontgomery@signatureassociates.com

CHRISTOPHER M. D'ANGELO

(248) 948 0109

cdangelo@signatureassociates.com

SIGNATURE ASSOCIATES

One Towne Square, Suite 1200

Southfield, MI 48076

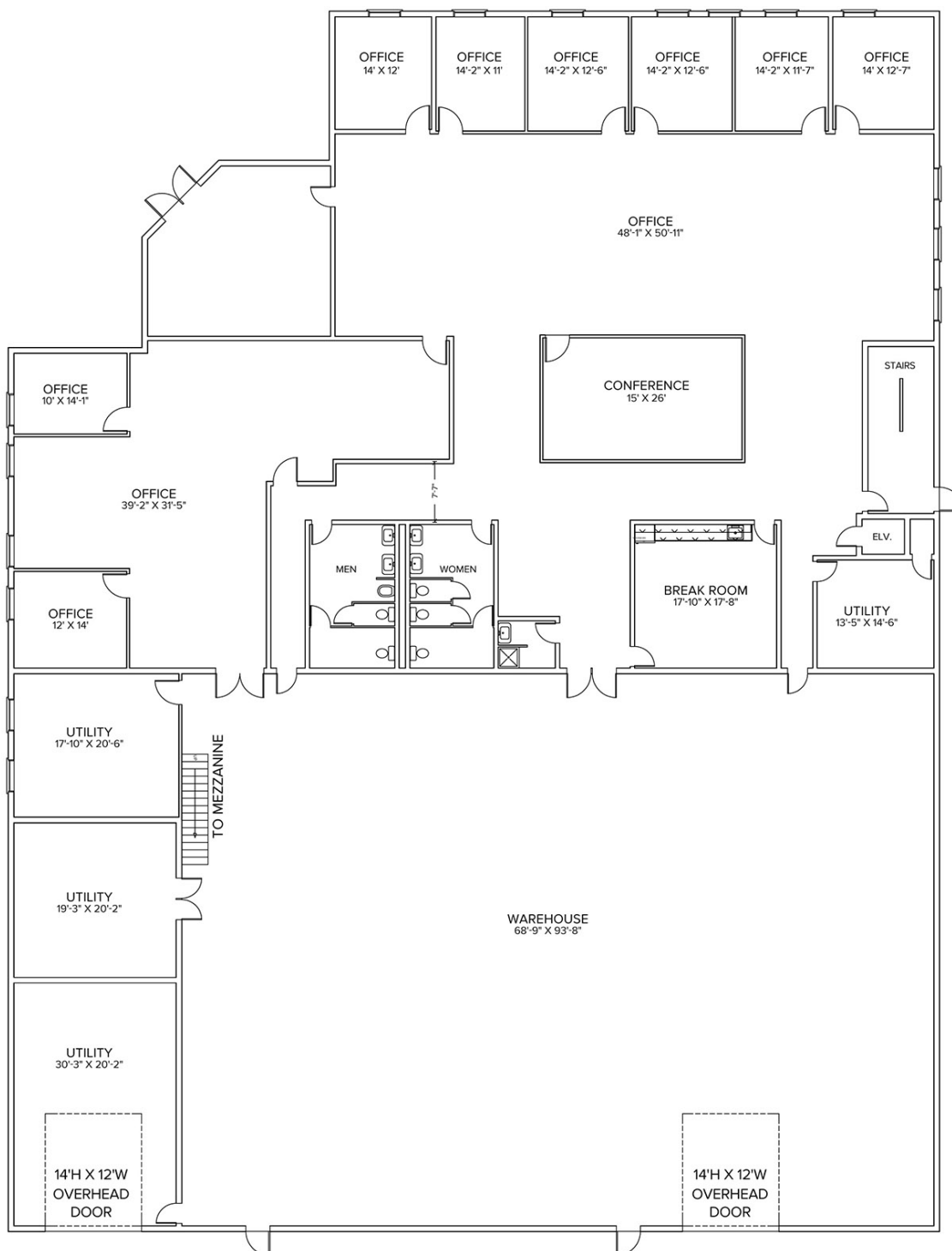
www.signatureassociates.com

47000 Liberty Drive – Wixom, Michigan

Hi-Tech For Sale or Lease

24,655
Square Feet
AVAILABLE

First Floor Plan



For more information, please contact:

JIM MONTGOMERY

(248) 359 0614

jmontgomery@signatureassociates.com

CHRISTOPHER M. D'ANGELO

(248) 948 0109

cdangelo@signatureassociates.com

SIGNATURE ASSOCIATES

One Towne Square, Suite 1200

Southfield, MI 48076

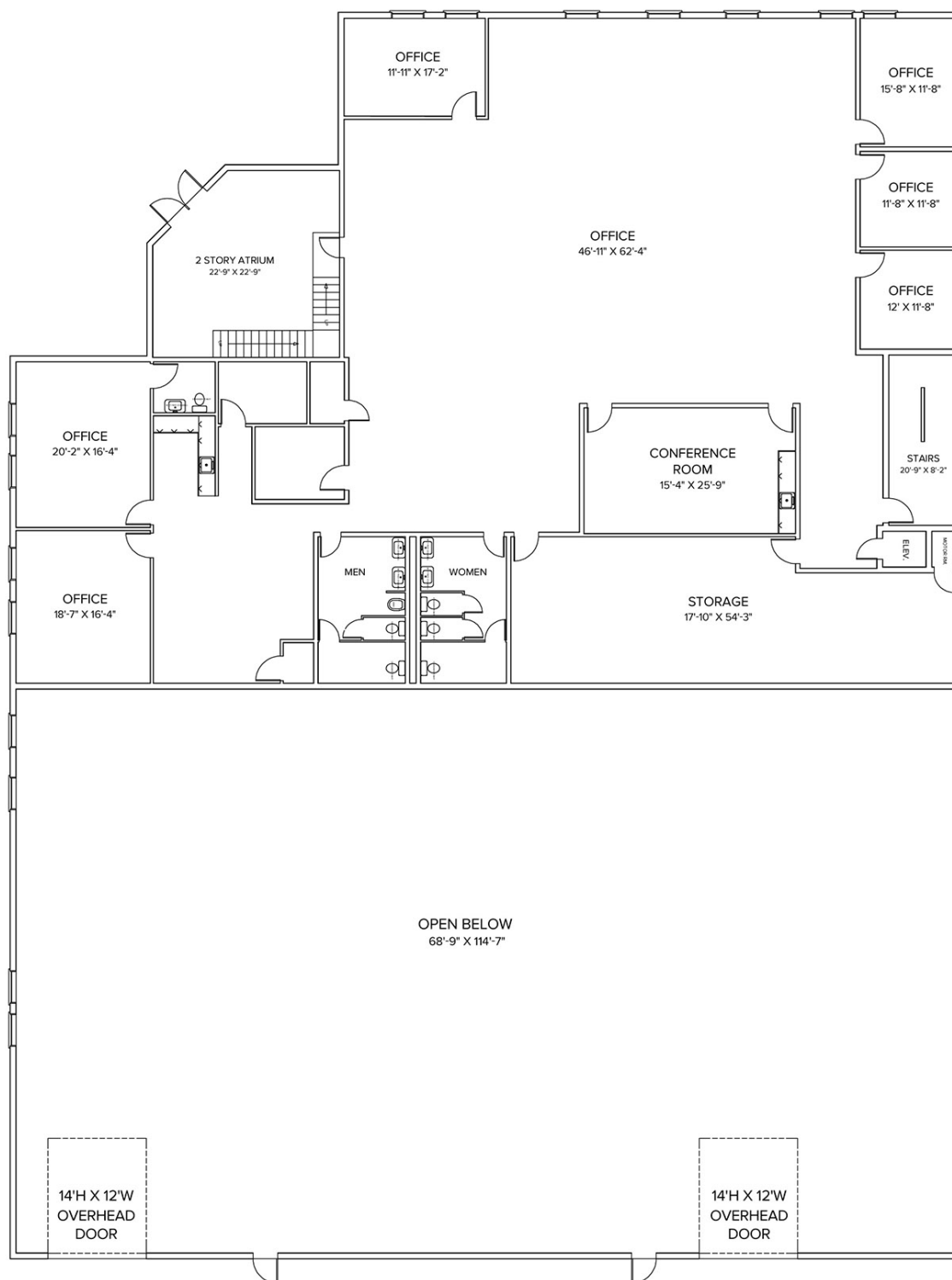
www.signatureassociates.com

47000 Liberty Drive – Wixom, Michigan

Hi-Tech For Sale or Lease

24,655
Square Feet
AVAILABLE

Second Floor Plan



For more information, please contact:

JIM MONTGOMERY

(248) 359 0614

jmontgomery@signatureassociates.com

CHRISTOPHER M. D'ANGELO

(248) 948 0109

cdangelo@signatureassociates.com

SIGNATURE ASSOCIATES

One Towne Square, Suite 1200

Southfield, MI 48076

www.signatureassociates.com

47000 Liberty Drive – Wixom, Michigan

Hi-Tech For Sale or Lease

24,655
Square Feet
AVAILABLE

Aerial



For more information, please contact:

JIM MONTGOMERY

(248) 359 0614

jmontgomery@signatureassociates.com

CHRISTOPHER M. D'ANGELO

(248) 948 0109

cdangelo@signatureassociates.com

SIGNATURE ASSOCIATES

One Towne Square, Suite 1200

Southfield, MI 48076

www.signatureassociates.com

Information is subject to verification and no liability for errors or omissions is assumed. Price is subject to change and listing withdrawal.