

23702 EUREKA ROAD
TAYLOR, MICHIGAN

RETAIL FOR LEASE
3,150 Square Feet Available



SIGNATURE ASSOCIATES
KNOW SIGNATURE | KNOW RESULTS



PROPERTY FEATURES

- 3,150 square feet available
- End-cap unit located in a regional trade area just west of Southland Mall, Meijer, Target and numerous other national tenants
- Strong traffic counts and demographics
- 22 shared parking spaces with ability to expand to 37 spaces
- Ideal for numerous retail, office or medical uses
- Lease Rate: \$35.00/sq. ft. NNN



For more information, please contact:

BRUCE D. BAJA
(248) 799 3177
bbaja@signatureassociates.com

JUSTIN GAFFREY
(248) 799 3143
jgaffrey@signatureassociates.com

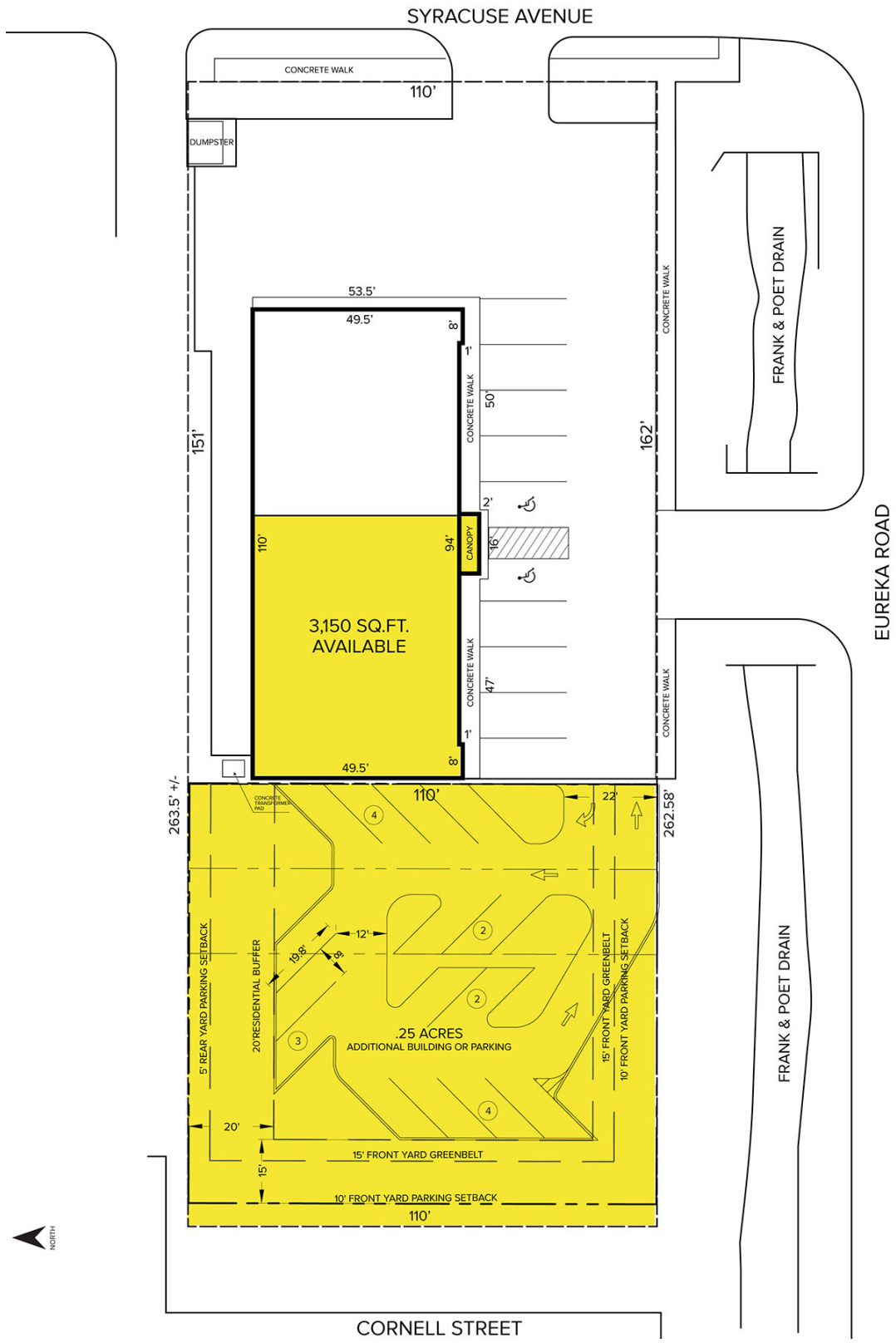
SIGNATURE ASSOCIATES
One Towne Square, Suite 1200
Southfield, MI 48076
www.signatureassociates.com

23702 Eureka Road – Taylor, Michigan

Retail For Lease

3,150
Square Feet
AVAILABLE

Site Plan



For more information, please contact:

BRUCE D. BAJA
(248) 799 3177
bbaja@signatureassociates.com

JUSTIN GAFFREY
(248) 799 3143
jgaffrey@signatureassociates.com

SIGNATURE ASSOCIATES
One Towne Square, Suite 1200
Southfield, MI 48076
www.signatureassociates.com

23702 Eureka Road – Taylor, Michigan

Retail For Lease

3,150
Square Feet
AVAILABLE



DEMOGRAPHICS

	POPULATION	MED. HH INCOME
1 MILE	6,134	\$54,695
3 MILE	53,308	\$62,928
5 MILE	188,917	\$70,068

TRAFFIC COUNTS (TWO-WAY)

59,341	Eureka Rd. E. of Telegraph Rd.
52,337	Eureka Rd. W. of Telegraph Rd.
95,076	Telegraph Rd. S. of Eureka Rd.
97,784	Telegraph Rd. N. of Eureka Rd.



For more information, please contact:

BRUCE D. BAJA
(248) 799 3177
bbaja@signatureassociates.com

JUSTIN GAFFREY
(248) 799 3143
jgaffrey@signatureassociates.com

SIGNATURE ASSOCIATES
One Towne Square, Suite 1200
Southfield, MI 48076
www.signatureassociates.com