

Barron Professional Building Medical Office Suite

4870 Clark, Ypsilanti, MI 48197



FOR LEASE



OFFERING SUMMARY

Lease Rate:	\$22.00/SF/yr Plus Utilities
Available SF:	3,266 SF
Zoning:	O-1 (Office)

PROPERTY HIGHLIGHTS

- 16,000 square foot medical/office
- Barron Professional Building
- Completely new interior reconstruction meeting current codes
- Abundant “at your door” parking
- Abundant windows in each suite
- Located near Trinity Health Hospital
- Easy access to Ann Arbor and Ypsilanti

Bart Wise

734.358.0354

bartw@swishercommercial.com

Barron Professional Building

4870 Clark, Ypsilanti, MI 48197



For Lease



PROPERTY DESCRIPTION

Suite 6 at Barron Professional Building offers 3,266 square feet of newly reconstructed medical office space within a modern, multi-tenant professional environment. This is the last remaining suite in the building, providing a rare opportunity for medical or office users seeking updated space designed to meet current codes and standards. The suite features abundant windows throughout, delivering excellent natural light and creating a bright, welcoming setting for patients and staff alike.

The 16,000 square foot building is ideally positioned along Clark Road, midway between Ann Arbor and Ypsilanti, offering strong regional accessibility. Located approximately 0.5 miles from Trinity Health Hospital and directly across from Washtenaw Community College, the property benefits from a strong healthcare and institutional presence, with Eastern Michigan University nearby.

Ample at-the-door parking and a scenic suburban setting enhance convenience for both employees and visitors, making this an ideal location for medical, wellness, or professional office users.

Bart Wise

734.358.0354

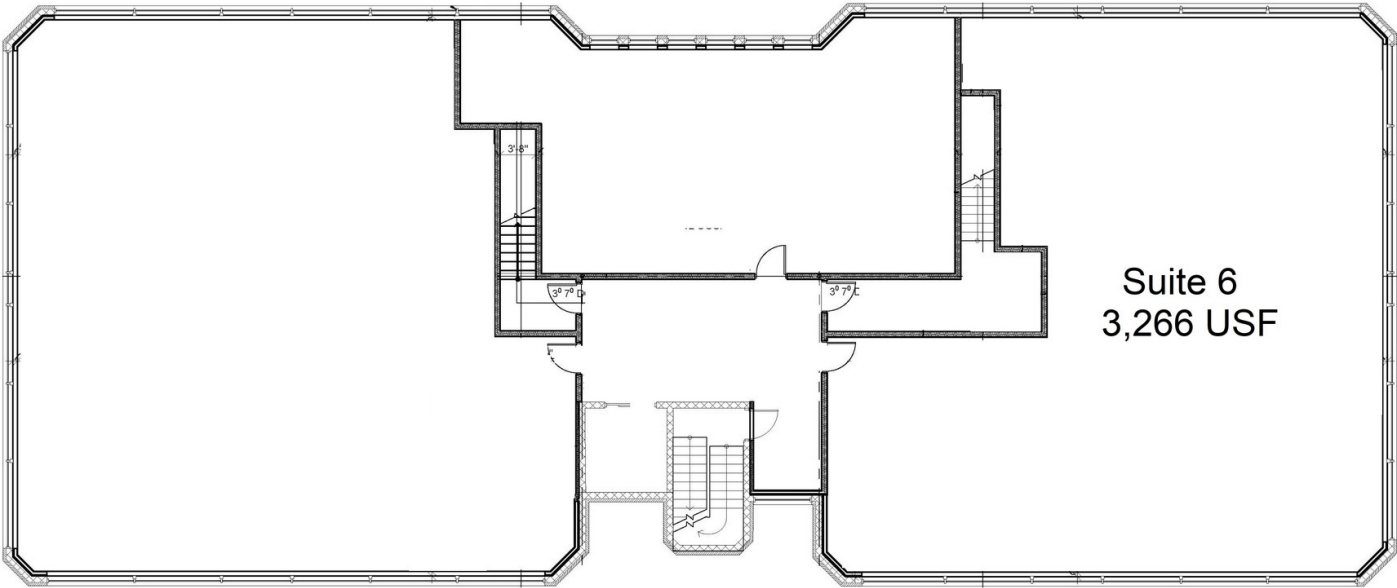
bartw@swishercommercial.com

Barron Professional Building Suite 6

4870 Clark, Ypsilanti, MI 48197



For Lease



SECOND LEVEL FLOOR PLAN
SCALE: 1/8" = 1'-0"

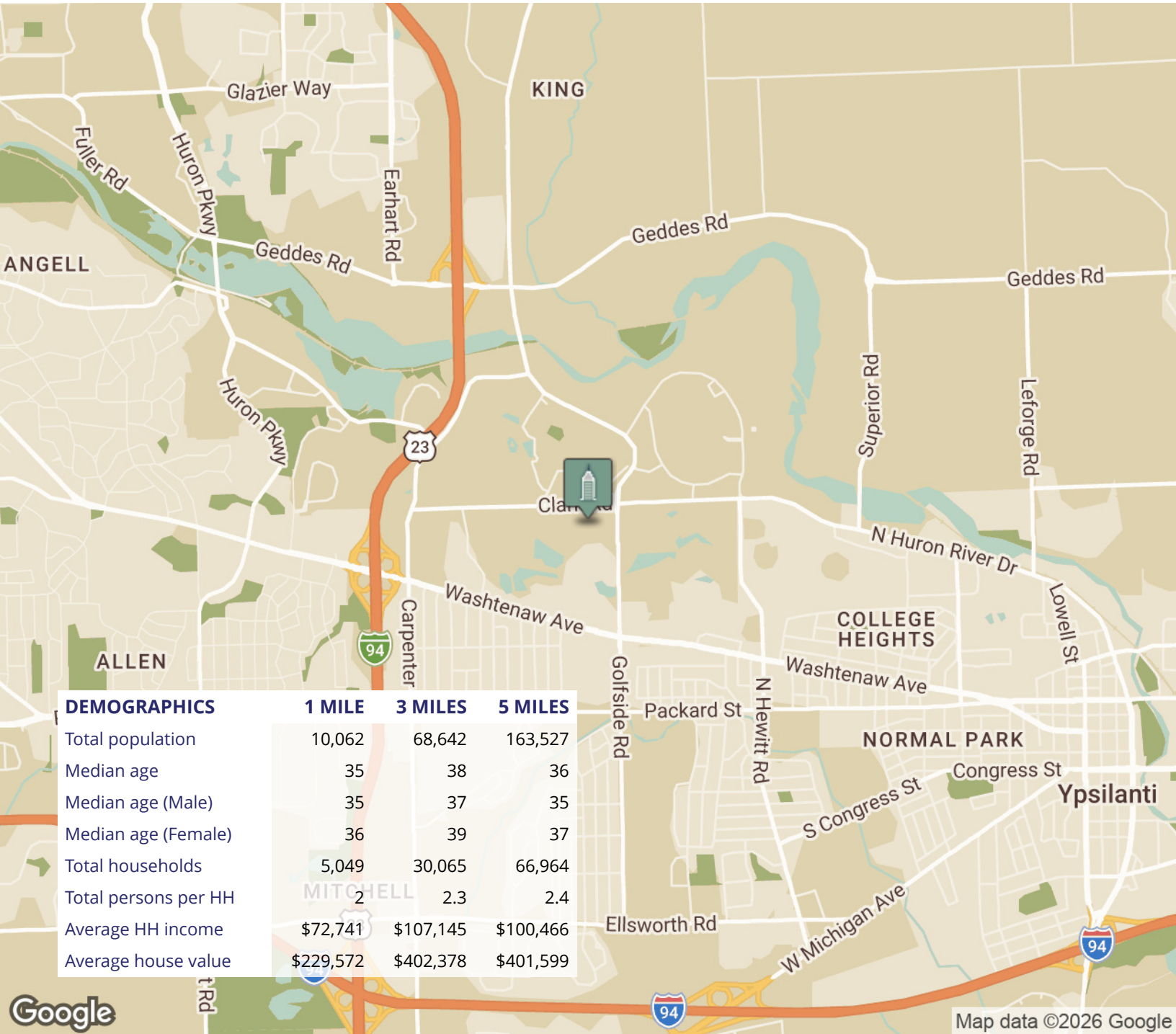
Bart Wise
734.358.0354
bartw@swishercommercial.com

Barron Professional Building



4870 Clark, Ypsilanti, MI 48197

For Lease



Bart Wise

734.358.0354

bartw@swishercommercial.com