

1785 W. STADIUM BLVD.  
SUITE #101  
ANN ARBOR, MICHIGAN

OFFICE FOR LEASE  
4,186 Square Feet Available



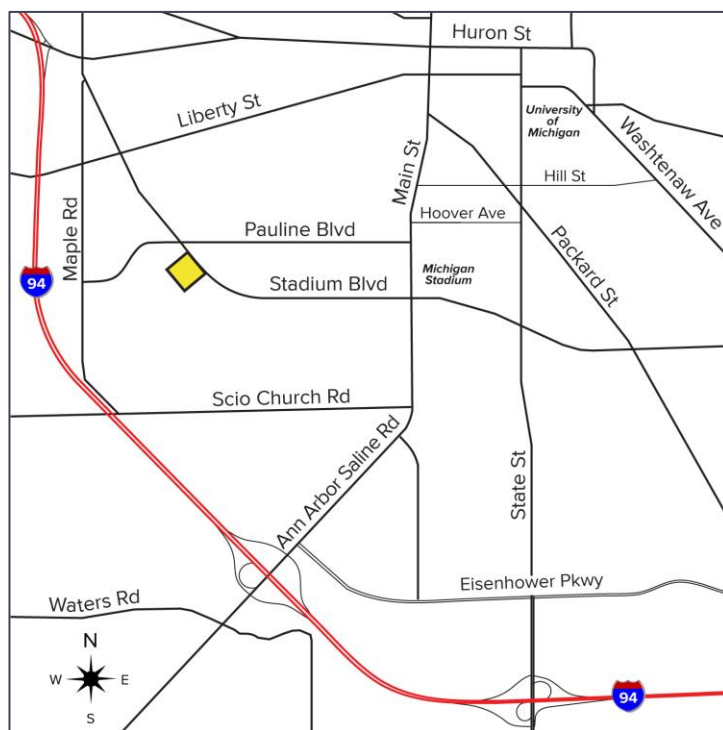
**SIGNATURE  
ASSOCIATES**  
KNOW SIGNATURE | KNOW RESULTS

## THE DAKOTA BUILDING



### PROPERTY FEATURES

- 3,626 useable square feet / 4,186 rentable square feet of professional office space available for lease
- Ideal for law firm, CPA and many other uses
- (1) Large conference room and (1) small conference room
- Six (6) private offices including (2) two large corner offices with panoramic views
- Spacious reception area
- Private men and women restrooms inside suite
- Nicely landscaped and professionally managed
- Abundant on-site parking – 91 parking spaces
- Lease Rate: \$23.95/sq. ft. MG + E



For more information, please contact:

**JAY CHAVEY**  
(248) 948 4196

[jchavey@signatureassociates.com](mailto:jchavey@signatureassociates.com)

**DRAKE FILIPPIS**  
(248) 799 3161

[dfilippis@signatureassociates.com](mailto:dfilippis@signatureassociates.com)

**SIGNATURE ASSOCIATES**  
One Towne Square, Suite 1200  
Southfield, MI 48076  
[www.signatureassociates.com](http://www.signatureassociates.com)

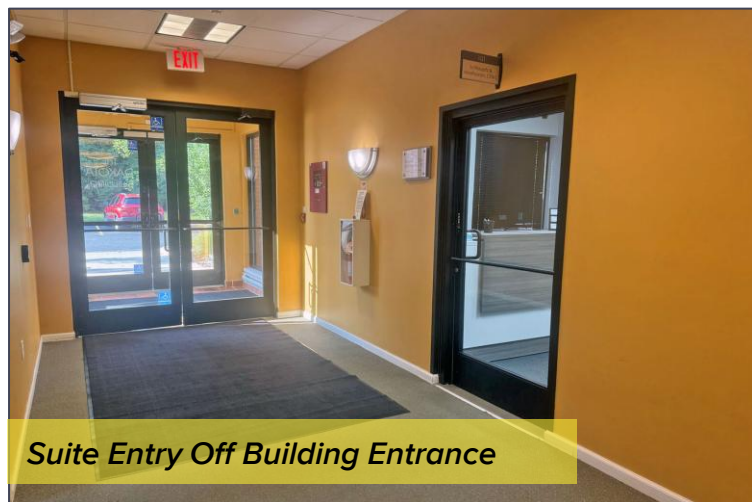


# 1785 W. Stadium Blvd., Suite #101 – Ann Arbor, MI

## Office For Lease

4,186  
Square Feet  
AVAILABLE

### Interior Photos



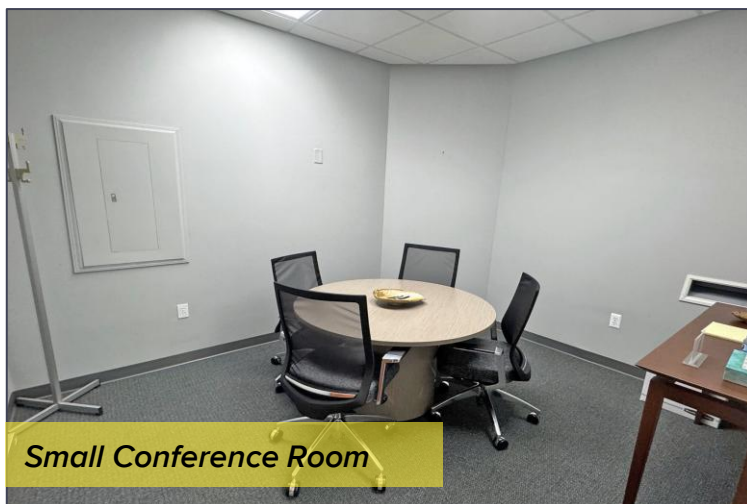
**Suite Entry Off Building Entrance**



**Reception Area**



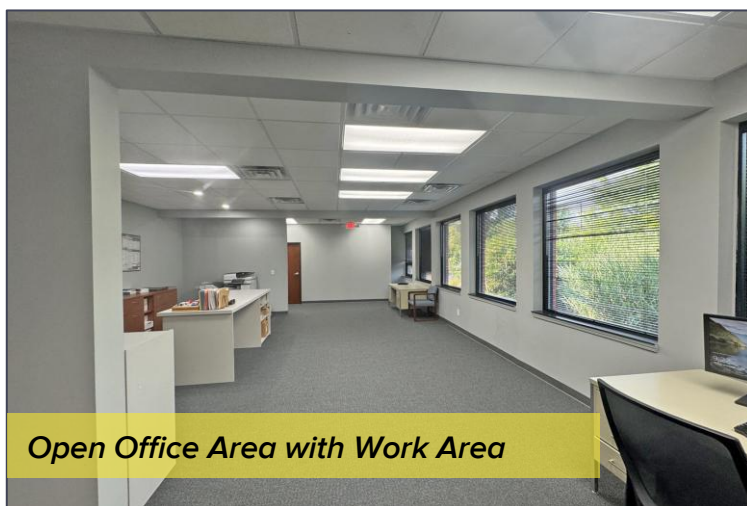
**Large Conference Room**



**Small Conference Room**



**Open Office Area with Cubicles**



**Open Office Area with Work Area**

For more information, please contact:

**JAY CHAVEY**  
(248) 948 4196

[jchavey@signatureassociates.com](mailto:jchavey@signatureassociates.com)

**DRAKE FILIPPIS**  
(248) 799 3161

[dfilippis@signatureassociates.com](mailto:dfilippis@signatureassociates.com)

**SIGNATURE ASSOCIATES**  
One Towne Square, Suite 1200  
Southfield, MI 48076  
[www.signatureassociates.com](http://www.signatureassociates.com)



# 1785 W. Stadium Blvd., Suite #101 – Ann Arbor, MI

## Office For Lease

4,186  
Square Feet  
AVAILABLE

### Interior Photos



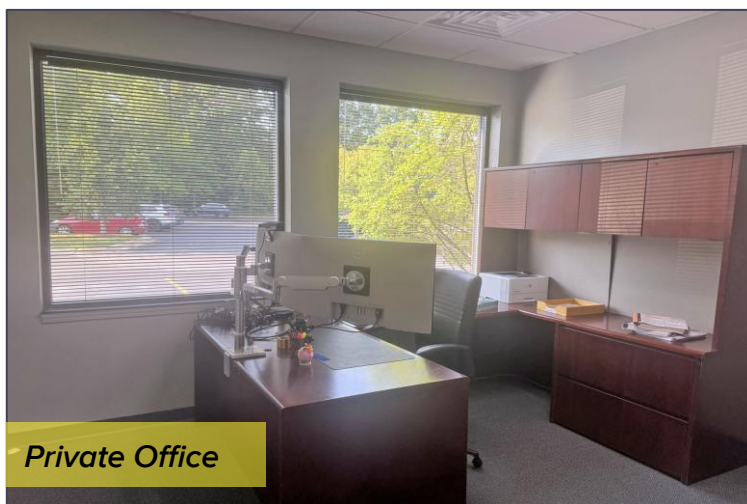
**Work Area with File Storage**



**Breakroom with Kitchen**



**1 of 2 Corner Offices**



**Private Office**



**Private Office**

For more information, please contact:

**JAY CHAVEY**  
(248) 948 4196

[jchavey@signatureassociates.com](mailto:jchavey@signatureassociates.com)

**DRAKE FILIPPIS**  
(248) 799 3161

[dfilippis@signatureassociates.com](mailto:dfilippis@signatureassociates.com)

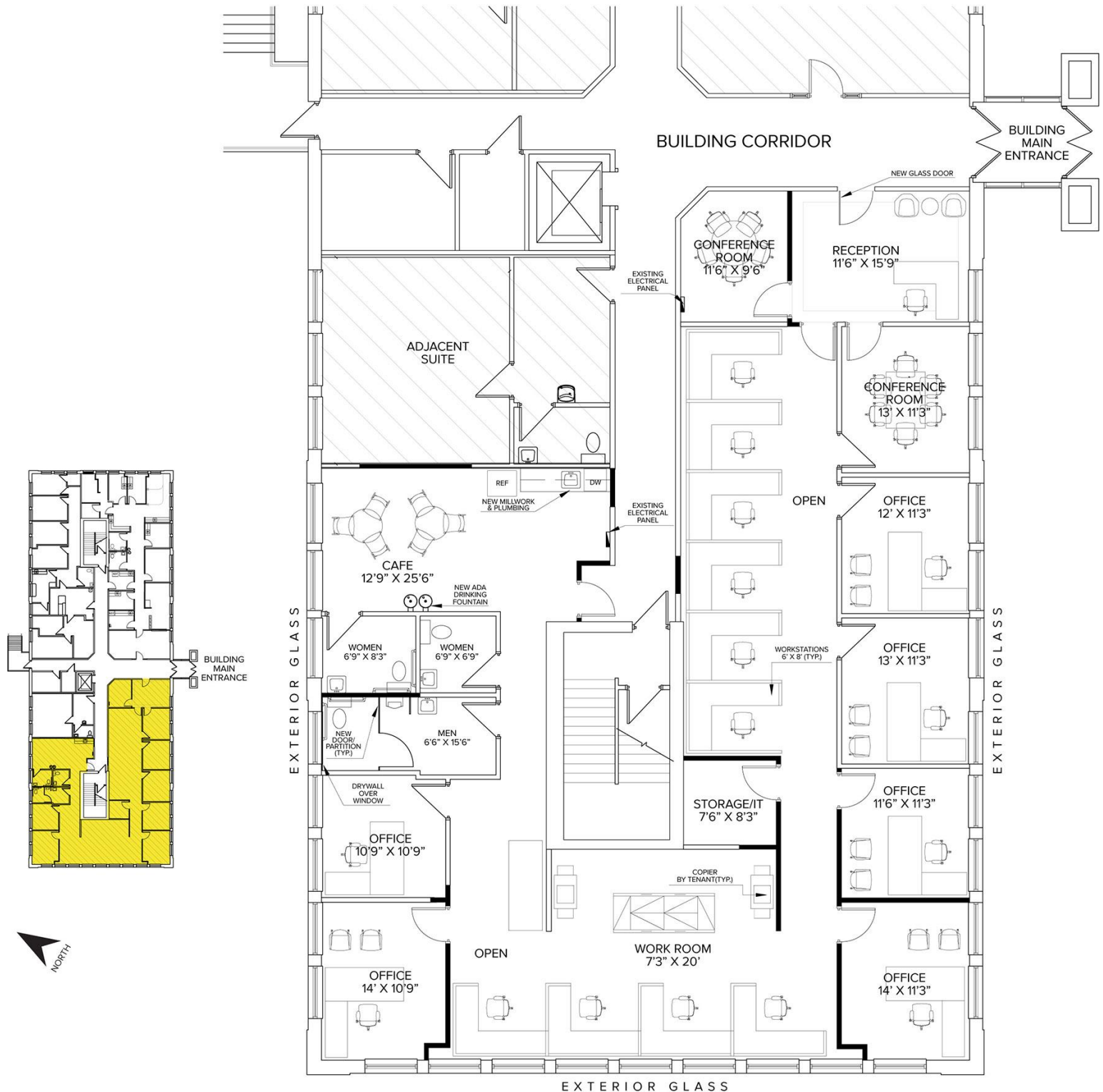
**SIGNATURE ASSOCIATES**  
One Towne Square, Suite 1200  
Southfield, MI 48076  
[www.signatureassociates.com](http://www.signatureassociates.com)

# 1785 W. Stadium Blvd., Suite #101 – Ann Arbor, MI

## Office For Lease

4,186  
Square Feet  
AVAILABLE

### Floor Plan



For more information, please contact:

**JAY CHAVEY**  
(248) 948 4196

[jchavey@signatureassociates.com](mailto:jchavey@signatureassociates.com)

**DRAKE FILIPPIS**  
(248) 799 3161

[dfilippis@signatureassociates.com](mailto:dfilippis@signatureassociates.com)

**SIGNATURE ASSOCIATES**  
One Towne Square, Suite 1200  
Southfield, MI 48076  
[www.signatureassociates.com](http://www.signatureassociates.com)



1785 W. Stadium Blvd., Suite #101 – Ann Arbor, MI  
Office For Lease

4,186  
Square Feet  
AVAILABLE

Aerial



For more information, please contact:

**JAY CHAVEY**  
(248) 948 4196

[jchavey@signatureassociates.com](mailto:jchavey@signatureassociates.com)

**DRAKE FILIPPIS**  
(248) 799 3161

[dfilippis@signatureassociates.com](mailto:dfilippis@signatureassociates.com)

**SIGNATURE ASSOCIATES**  
One Towne Square, Suite 1200  
Southfield, MI 48076  
[www.signatureassociates.com](http://www.signatureassociates.com)

Information is subject to verification and no liability for errors or omissions is assumed. Price is subject to change and listing withdrawal.