

250 MERTON ROAD  
DETROIT, MICHIGAN

INVESTMENT SALE  
26,168 Square Feet Available



**SIGNATURE  
ASSOCIATES**  
KNOW SIGNATURE | KNOW RESULTS

**MULTI-FAMILY**



## PROPERTY FEATURES

- 26,168 square feet available
- Building is unoccupied
- All offers will be considered realistic
- 33-unit apartment building
- Sale Price: Contact Brokers



For more information, please contact:

**JOE STACK**  
(248) 359 0615  
jstack@signatureassociates.com

**CHRIS MONSOUR**  
(248) 948 0107  
cmonsour@signatureassociates.com

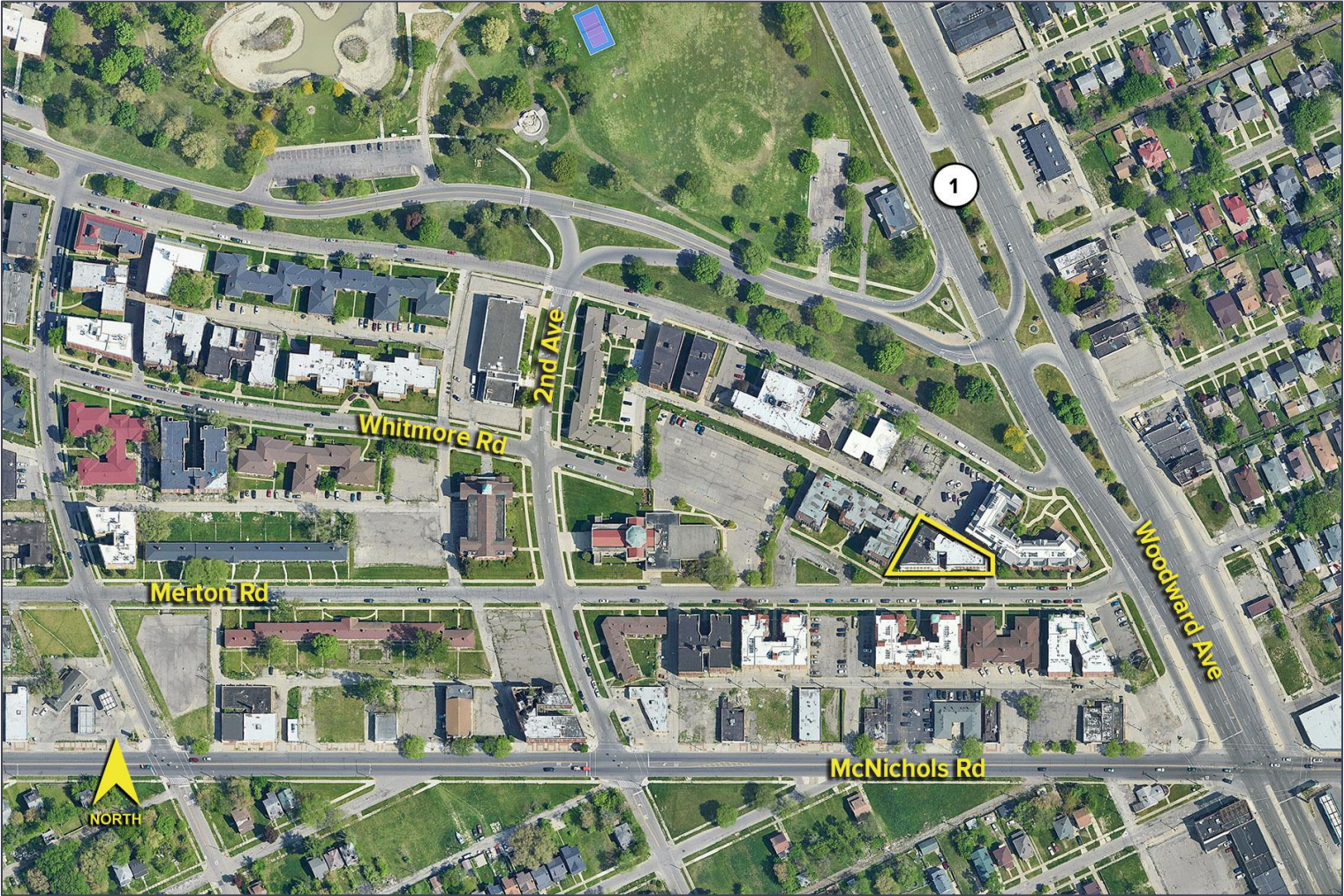
**SIGNATURE ASSOCIATES**  
One Towne Square, Suite 1200  
Southfield, MI 48076  
www.signatureassociates.com

# 250 Merton Road – Detroit, Michigan

## Investment Sale

26,168  
Square Feet  
AVAILABLE

Aerial



For more information, please contact:

**JOE STACK**  
(248) 359 0615  
jstack@signatureassociates.com

**CHRIS MONSOUR**  
(248) 948 0107  
cmonsour@signatureassociates.com

**SIGNATURE ASSOCIATES**  
One Towne Square, Suite 1200  
Southfield, MI 48076  
www.signatureassociates.com

Information is subject to verification and no liability for errors or omissions is assumed. Price is subject to change and listing withdrawal.