

41600 SIX MILE ROAD  
NORTHVILLE TWP., MICHIGAN

OFFICE FOR SALE OR LEASE  
24,000 Square Feet Available

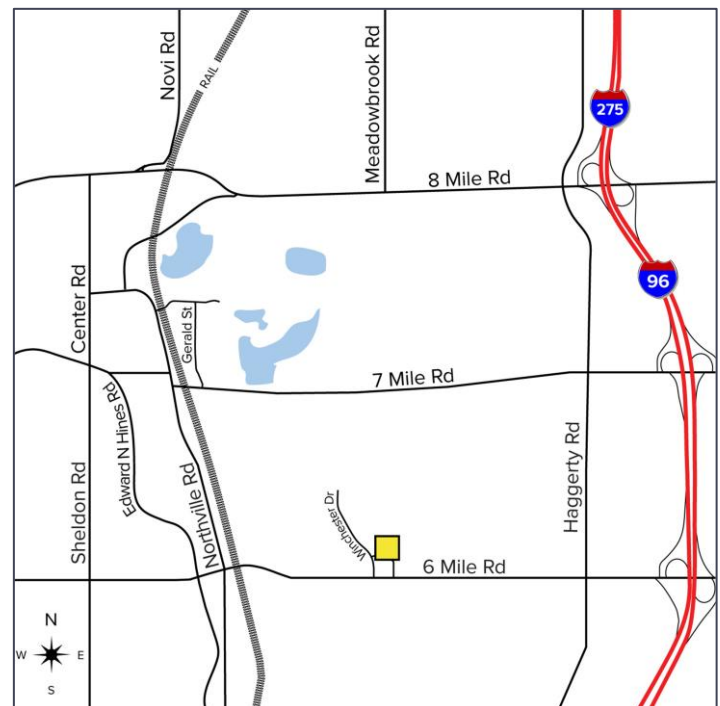


**SIGNATURE  
ASSOCIATES**  
KNOW SIGNATURE | KNOW RESULTS



## PROPERTY FEATURES

- 24,000 square feet available
- 14' - 16' clear height
- (6) grade level doors
- Ample parking
- Current Northville Township Police Department
- Will need an easement to access baseball fields
- Located on 3.22 acres
- Lease Rate: \$13.50/sq. ft. NNN
- Sale Price: \$2,161,500 (\$90.06/sq. ft.)



For more information, please contact:

**STEVE GORDON**  
(248) 948 0101  
sgordon@signatureassociates.com

**DAVE GREEN**  
(248) 948 4184  
dgreen@signatureassociates.com

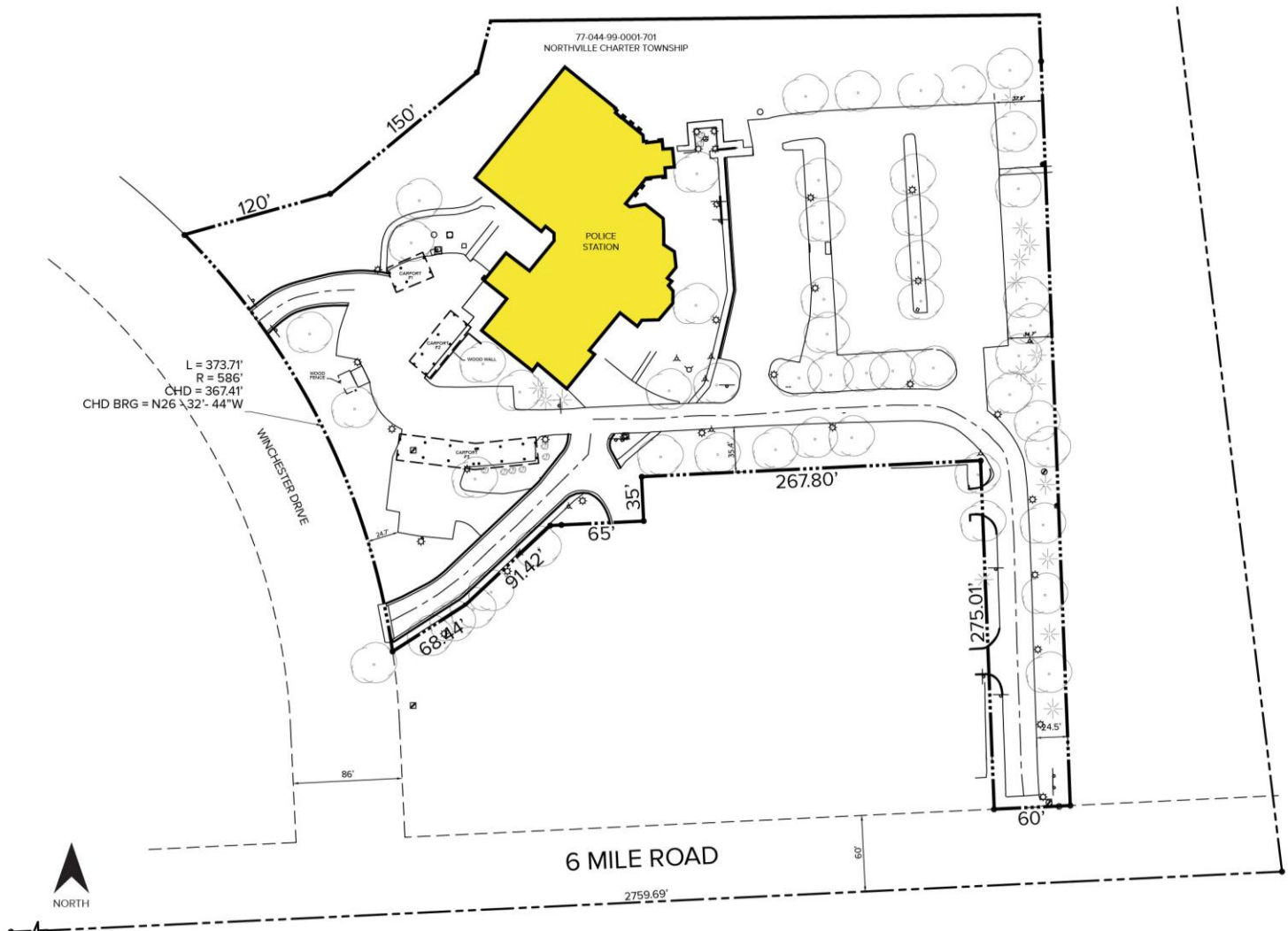
**SIGNATURE ASSOCIATES**  
One Towne Square, Suite 1200  
Southfield, MI 48076  
www.signatureassociates.com

# 41600 Six Mile Road – Northville Twp., Michigan

## Office For Sale or Lease

24,000  
Square Feet  
AVAILABLE

### Site Plan



For more information, please contact:

**STEVE GORDON**

(248) 948 0101

sgordon@signatureassociates.com

**DAVE GREEN**

(248) 948 4184

dgreen@signatureassociates.com

**SIGNATURE ASSOCIATES**

One Towne Square, Suite 1200

Southfield, MI 48076

www.signatureassociates.com



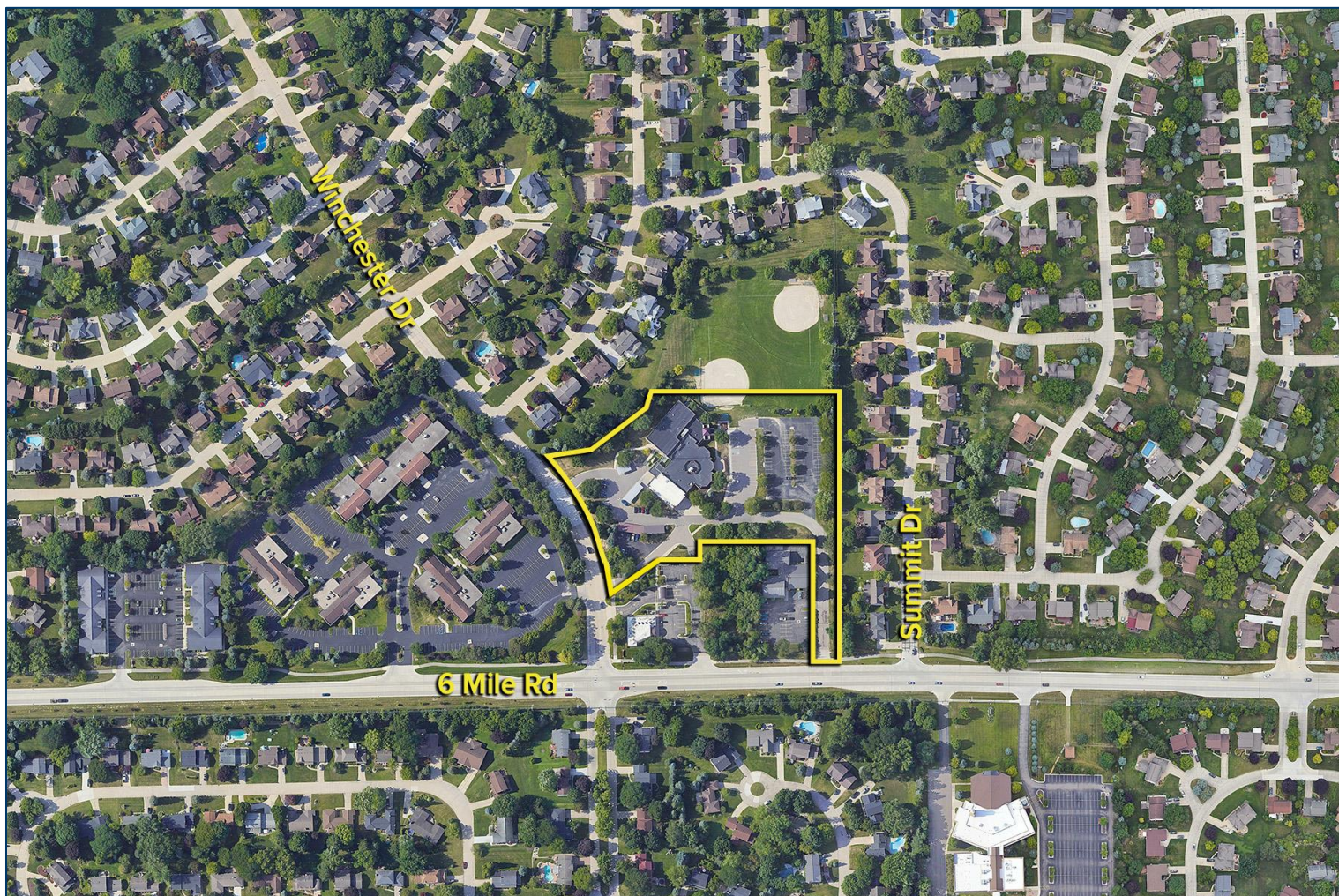


# 41600 Six Mile Road – Northville Twp., Michigan

Office For Sale or Lease

24,000  
Square Feet  
AVAILABLE

Aerial



For more information, please contact:

**STEVE GORDON**

(248) 948 0101

[sgordon@signatureassociates.com](mailto:sgordon@signatureassociates.com)

**DAVE GREEN**

(248) 948 4184

[dgreen@signatureassociates.com](mailto:dgreen@signatureassociates.com)

**SIGNATURE ASSOCIATES**

One Towne Square, Suite 1200

Southfield, MI 48076

[www.signatureassociates.com](http://www.signatureassociates.com)