



## Office Park West

526, 612, 616 S. Croyts Road  
Lansing, Michigan 48917

### Property Highlights

- Professionally managed
- Part of a thriving office complex
- Perfect space for non-profits, business associations and mental health practitioners
- Tenant improvements available for qualified tenants
- Central location near I-496 with easy access to Downtown Lansing, nearby services, retailers, restaurants and Crowne Plaza Lansing West

### Offering Summary

Lease Rate:	\$15.00 SF/yr (Gross)
Building Size:	5,035 SF
Available SF:	445 - 3,089 SF

### For More Information



#### Steve Slater

Associate Broker

O: 517 487 9222 | C: 517 749 7914

[steveslater@naimidmichigan.com](mailto:steveslater@naimidmichigan.com)



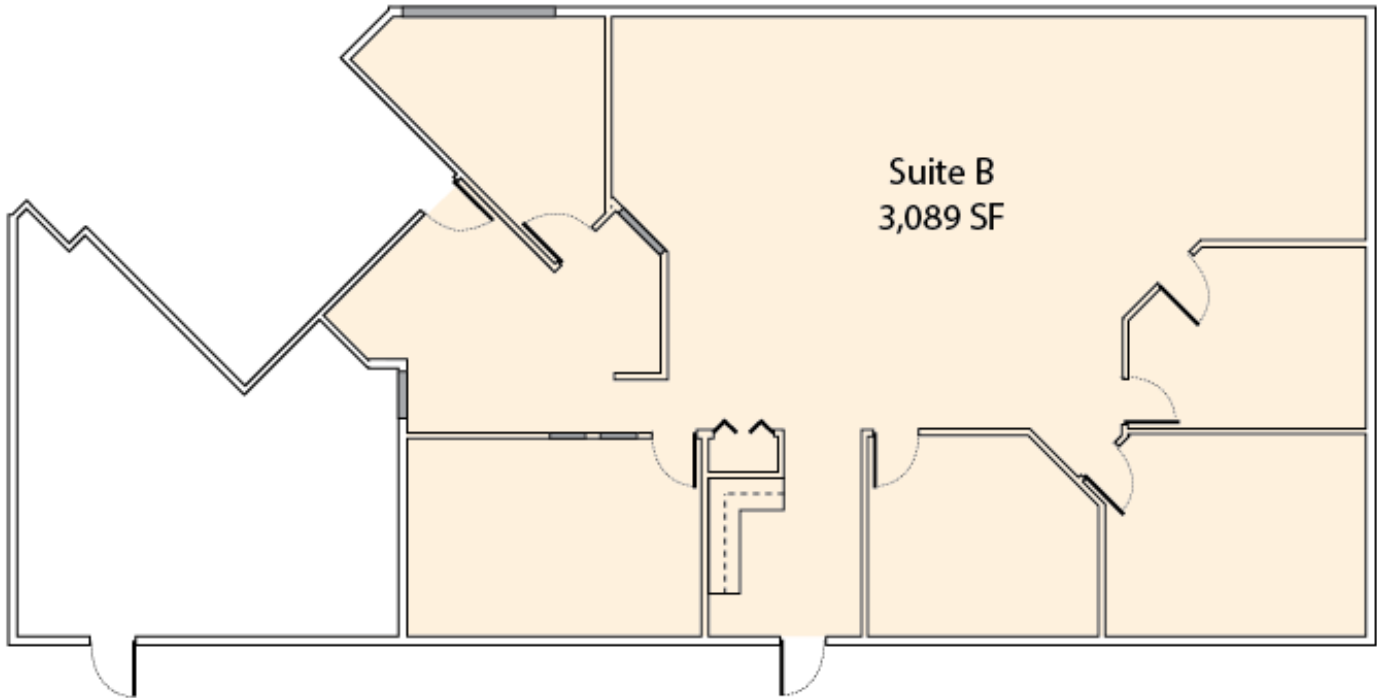


### Lease Information

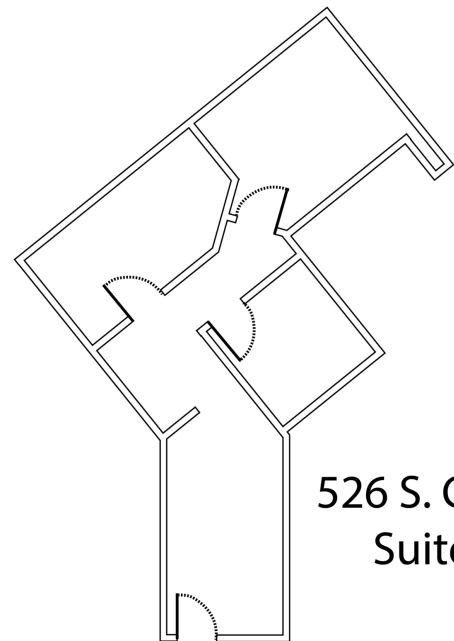
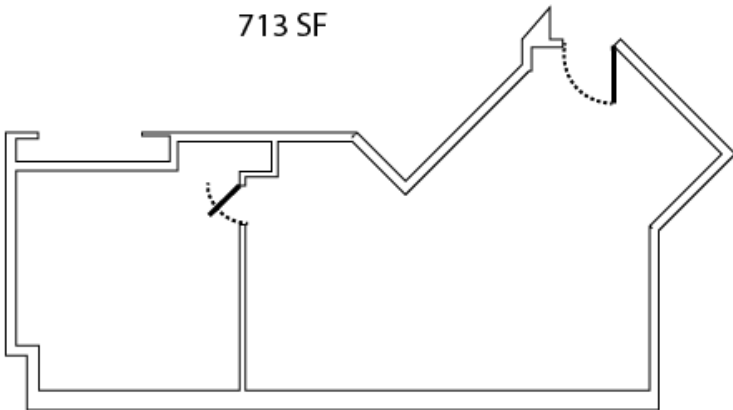
Lease Type:	Gross	Lease Term:	Negotiable
Total Space:	445 - 3,089 SF	Lease Rate:	\$15.00 SF/yr

### Available Spaces

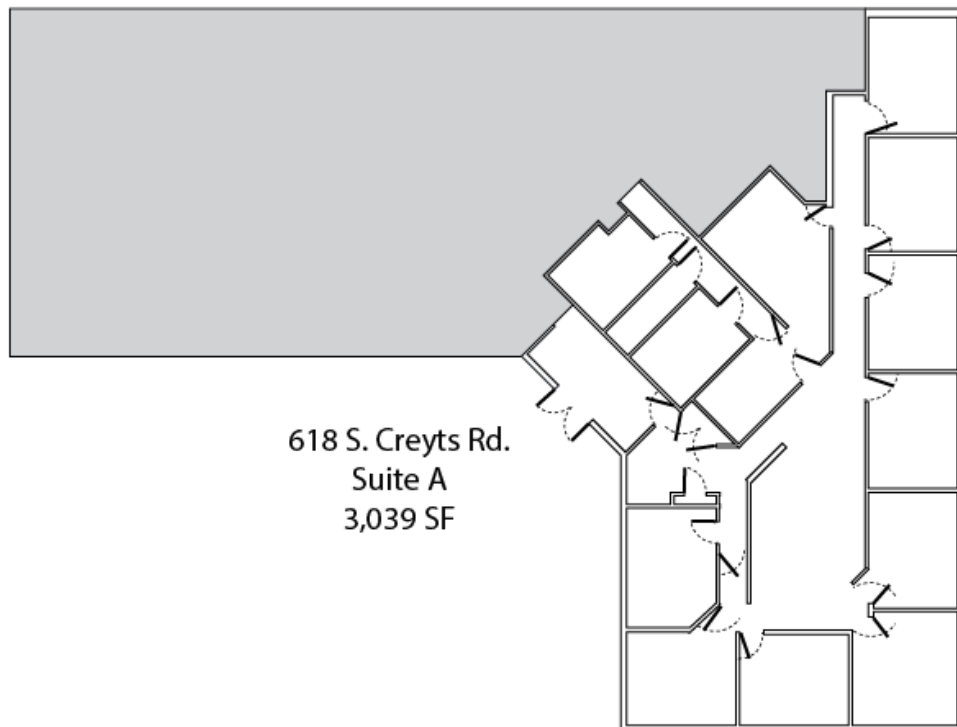
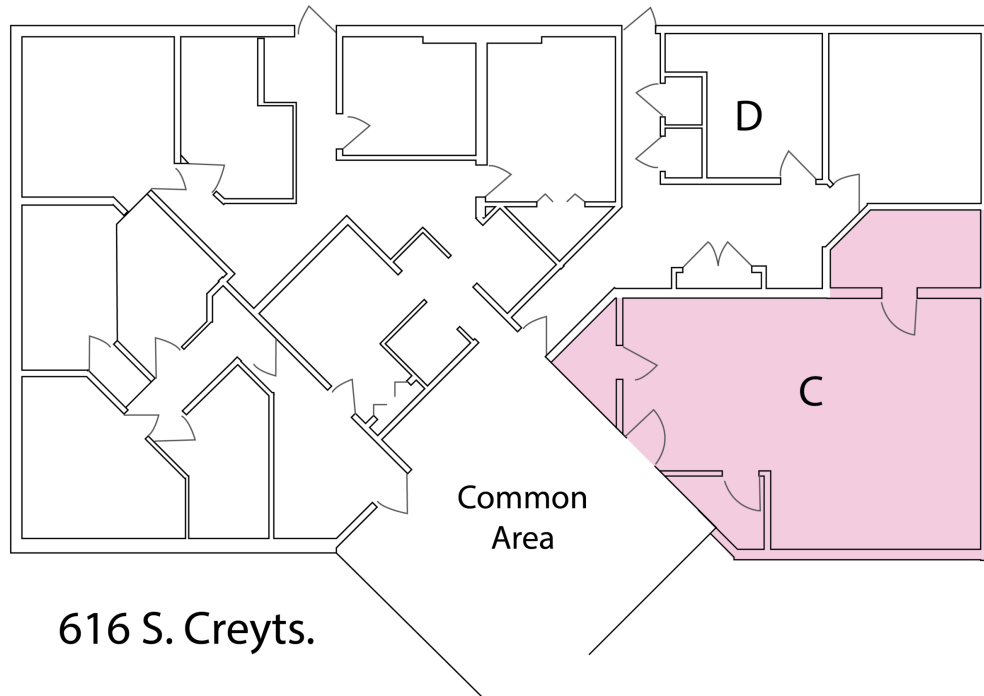
Suite	Size (SF)	Lease Rate
504 S. Creyts - Suite B	3,089 SF	\$15.00 SF/yr
516 S. Creyts Suite C	713 SF	\$15.00 SF/yr
526 S. Creyts Suite B	770 SF	\$15.00 SF/yr
526 S. Creyts Suite E	445 SF	\$15.00 SF/yr
616 S. Creyts Suite C	828 SF	\$15.00 SF/yr
618 S. Creyts Suite A	3,039 SF	\$15.00 SF/yr



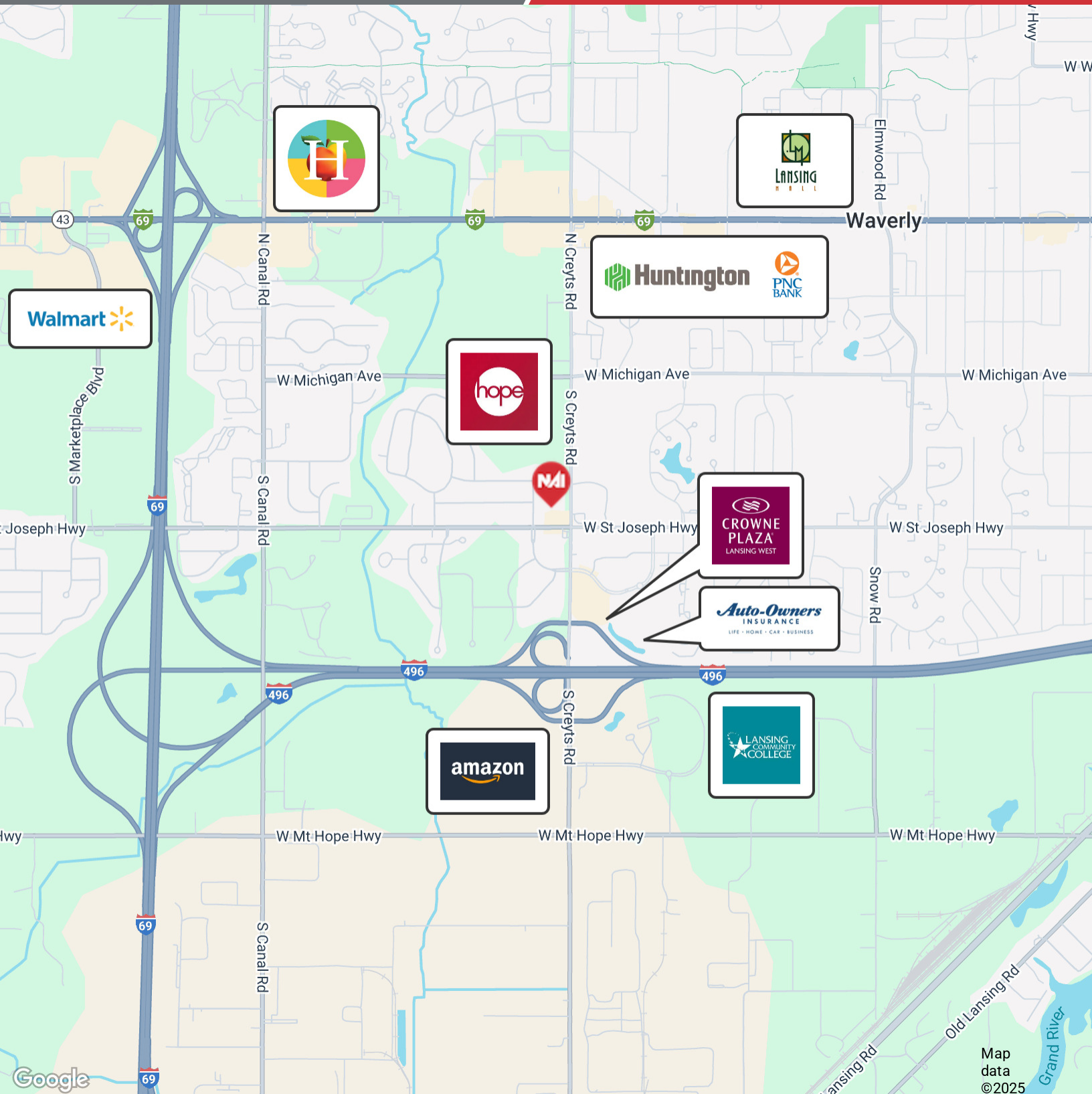
516 S. Creyts Rd.  
Suite C  
713 SF

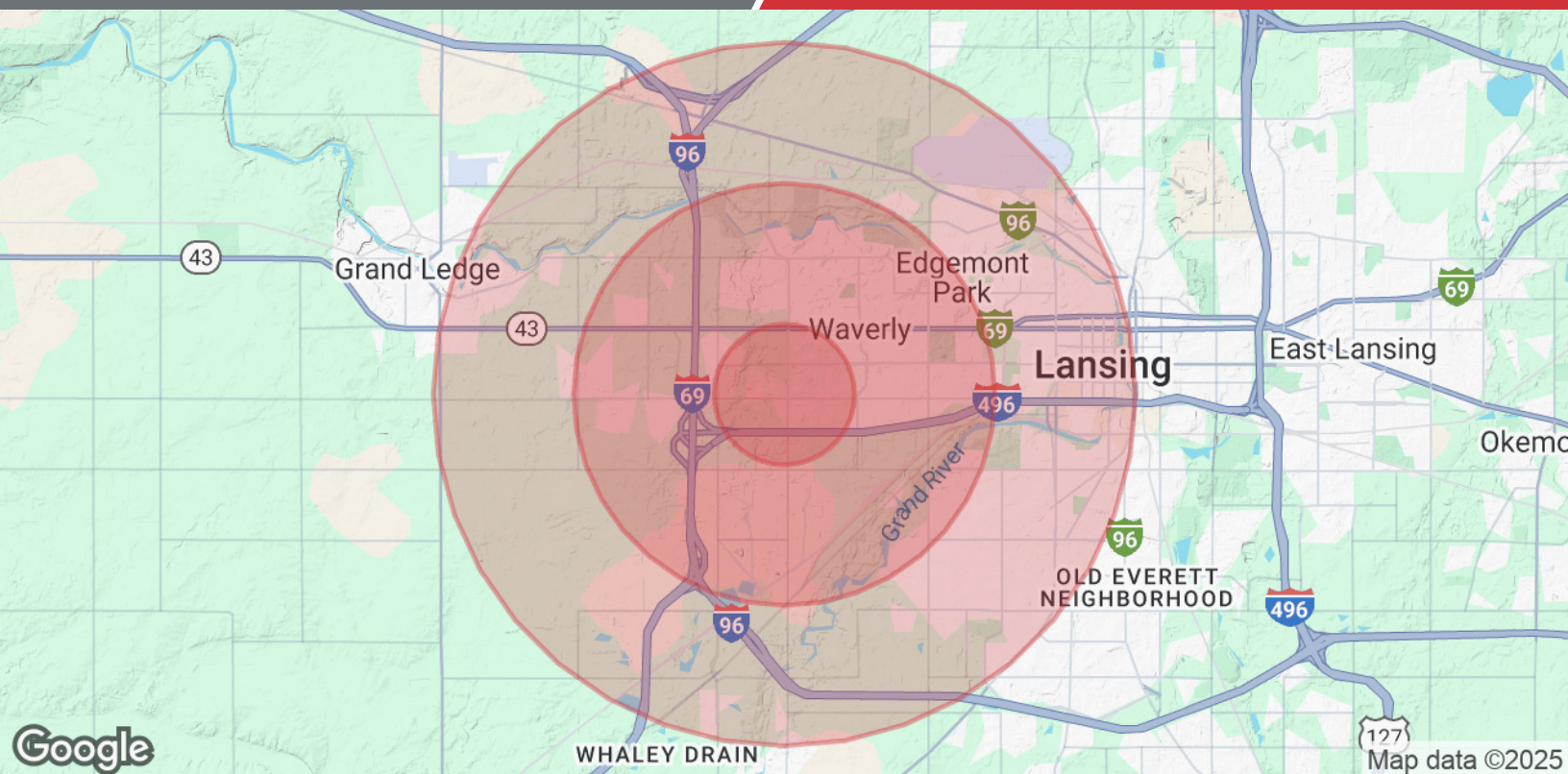


526 S. Creyts  
Suite B









Population	1 Mile	3 Miles	5 Miles
Total Population	4,685	38,459	101,272
Average Age	47	43	40
Average Age (Male)	0	0	0
Average Age (Female)	0	0	0
Households & Income	1 Mile	3 Miles	5 Miles
Total Households	2,366	17,463	44,547
# of Persons per HH	2	2.2	2.3
Average HH Income	\$93,156	\$91,223	\$80,613
Average House Value	\$213,427	\$234,091	\$192,522

Demographics data derived from AlphaMap