

10395 HAGGERTY STREET
DEARBORN, MICHIGAN

INDUSTRIAL FOR LEASE
20,037 Square Feet Available



**SIGNATURE
ASSOCIATES**
KNOW SIGNATURE | KNOW RESULTS



PROPERTY FEATURES

- 20,037 square feet available
- 337 square feet office
- (2) interior truck docks
- 14' – 20' clear height
- (5) 12' x 14' & (1) 20' x 13' grade level doors
- 1000 amps, 480 volts estimated
- Located in East Dearborn near Ford Road and I-94
- This building is ideal for manufacturing or warehousing
- Additional three acres, outside storage available for lease
- Near Ford Rouge Plant and Truck City
- Lease Rate: \$8.00/sq. ft. NNN



For more information, please contact:

STEVE GORDON
(248) 948 0101
sgordon@signatureassociates.com

JACK TOWNSEND
(248) 948 0115
jtownsend@signatureassociates.com

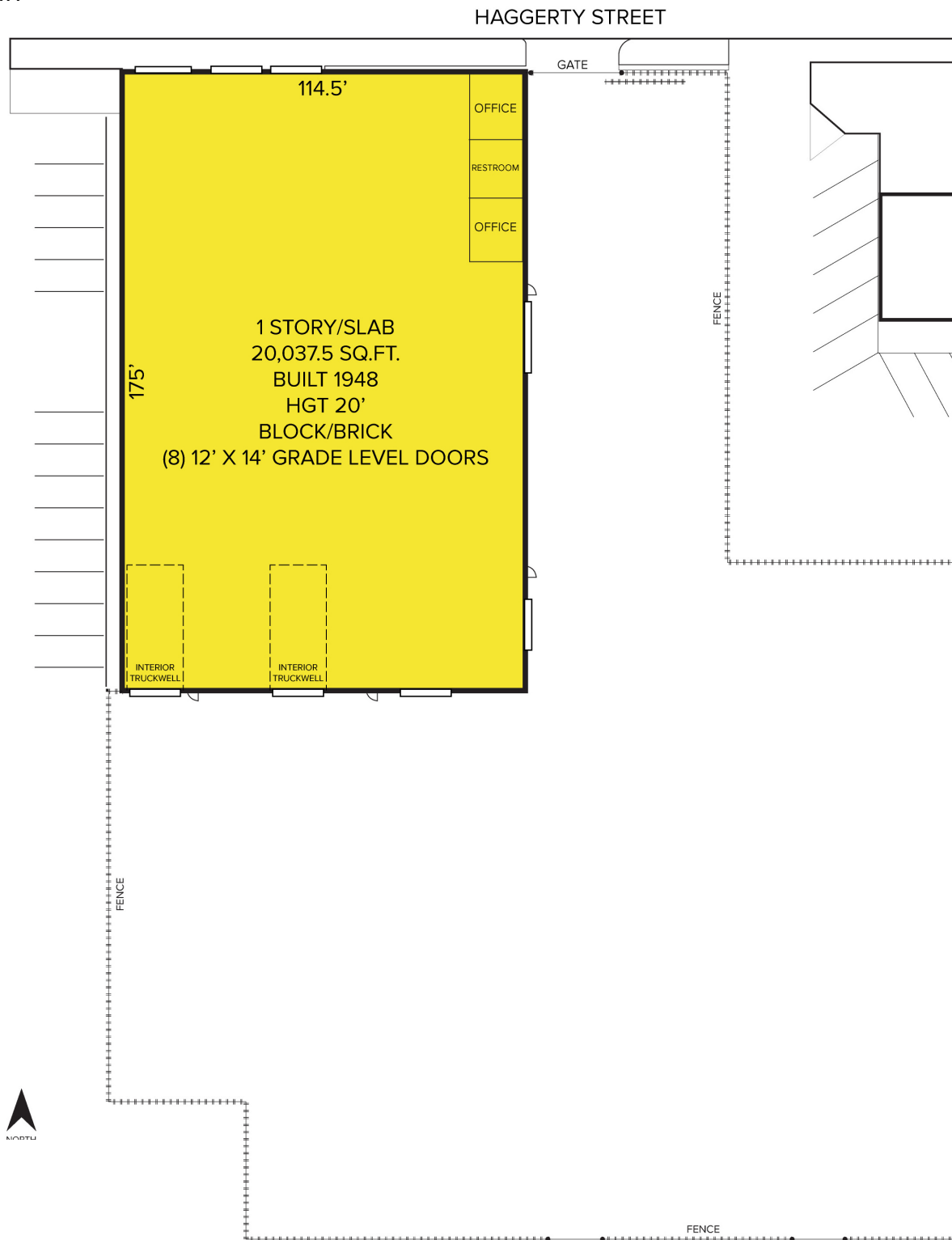
SIGNATURE ASSOCIATES
One Towne Square, Suite 1200
Southfield, MI 48076
www.signatureassociates.com

10395 Haggerty Street – Dearborn, Michigan

Industrial For Lease

20,037
Square Feet
AVAILABLE

Site Plan



For more information, please contact:

STEVE GORDON
(248) 948 0101
sgordon@signatureassociates.com

JACK TOWNSEND
(248) 948 0115
jtownsend@signatureassociates.com

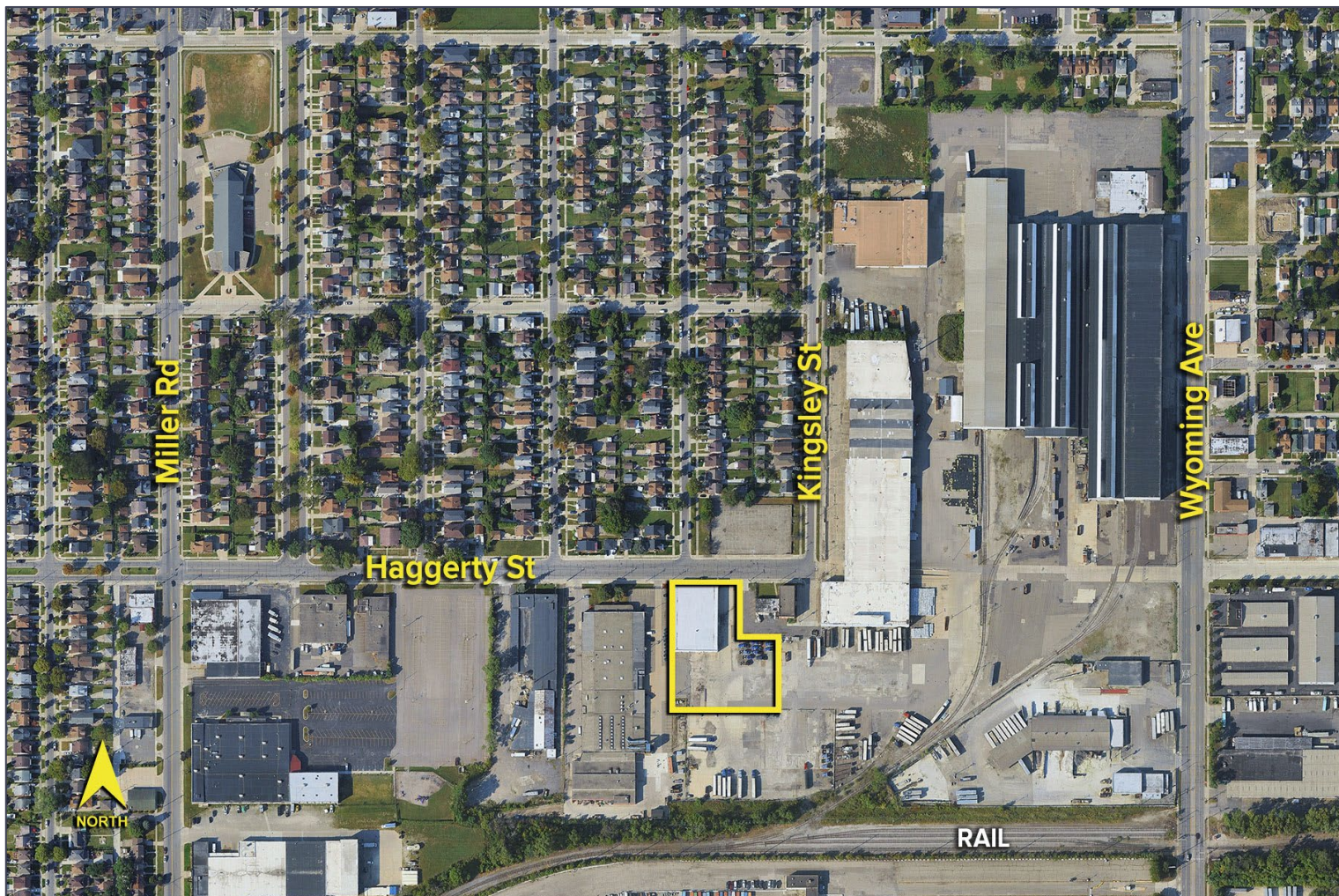
SIGNATURE ASSOCIATES
One Towne Square, Suite 1200
Southfield, MI 48076
www.signatureassociates.com

10395 Haggerty Street – Dearborn, Michigan

Industrial For Lease

20,037
Square Feet
AVAILABLE

Aerial



For more information, please contact:

STEVE GORDON
(248) 948 0101
sgordon@signatureassociates.com

JACK TOWNSEND
(248) 948 0115
jtownsend@signatureassociates.com

SIGNATURE ASSOCIATES
One Towne Square, Suite 1200
Southfield, MI 48076
www.signatureassociates.com