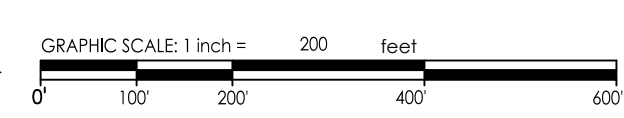
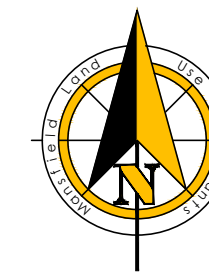


LEELANAU COUNTY SOILS MAP LEGEND (M1089)

Map Unit Symbol	Map Unit Name
ARA	Alcona-Richter sandy loams, 0 to 2% slopes
	Depth to restrictive layer: More than 80 inches
	Natural Drainage Class: Moderately well drained
	Runoff Class: Low
	Infiltration: 0.57 to 1.98 in/hr
	Depth to Water Table: About 30 to 72 inches
LIC	Leelanau-East Lake loamy sands, 6 to 12% slopes
	Depth to restrictive layer: More than 80 inches
	Natural Drainage Class: Well drained
	Runoff Class: Very Low
	Infiltration: 1.98 to 5.95 in/hr
	Depth to Water Table: More than 80 inches
LID	Leelanau-East Lake loamy sands, 12 to 18% slopes
	Depth to restrictive layer: More than 80 inches
	Natural Drainage Class: Well drained
	Runoff Class: Very Low
	Infiltration: 1.98 to 5.95 in/hr
	Depth to Water Table: More than 80 inches
LIE	Leelanau-East Lake loamy sands, 18 to 25% slopes
	Depth to restrictive layer: More than 80 inches
	Natural Drainage Class: Well drained
	Runoff Class: Low
	Infiltration: 1.98 to 5.95 in/hr
	Depth to Water Table: More than 80 inches
LIF	Leelanau-East Lake loamy sands, 25 to 45% slopes
	Depth to restrictive layer: More than 80 inches
	Natural Drainage Class: Well drained
	Runoff Class: Low
	Infiltration: 1.98 to 5.95 in/hr
	Depth to Water Table: More than 80 inches
MIB	Mancelona-East lake loamy sands, 0 to 6% slopes
	Depth to restrictive layer: More than 80 inches
	Natural Drainage Class: Somewhat excessively drained
	Runoff Class: Very low
	Infiltration: 1.98 to 5.95 in/hr
	Depth to Water Table: More than 80 inches



NOTE: Property boundaries, land contours, physical features and the like, illustrated on this plan are exhibited for planning purposes only. Mansfield Land Use Consultants makes no guarantee to the correctness nor the completeness of this information.

830 Cottageview Dr.
Suite 201
P.O. Box 4015
Traverse City, MI 49685
Phone: 231-946-9310
www.maaeps.com
info@maaeps.com

Mansfield 25
Land Use Consultants
Year Anniversary 1999-2024

REV	DATE	BY	CHK	DESCRIPTION
01	07-11-24	dmc	dmc	Original design

Mary McManemy
OVERALL EXISTING CONDITIONS PLAN
Section 20, Town 30 North, Range 11 West
Suttons Bay Township, Leelanau County, Michigan

CONCEPTUAL

P.L. dmc

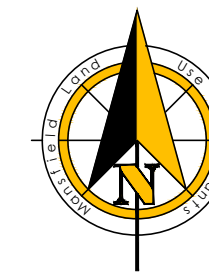
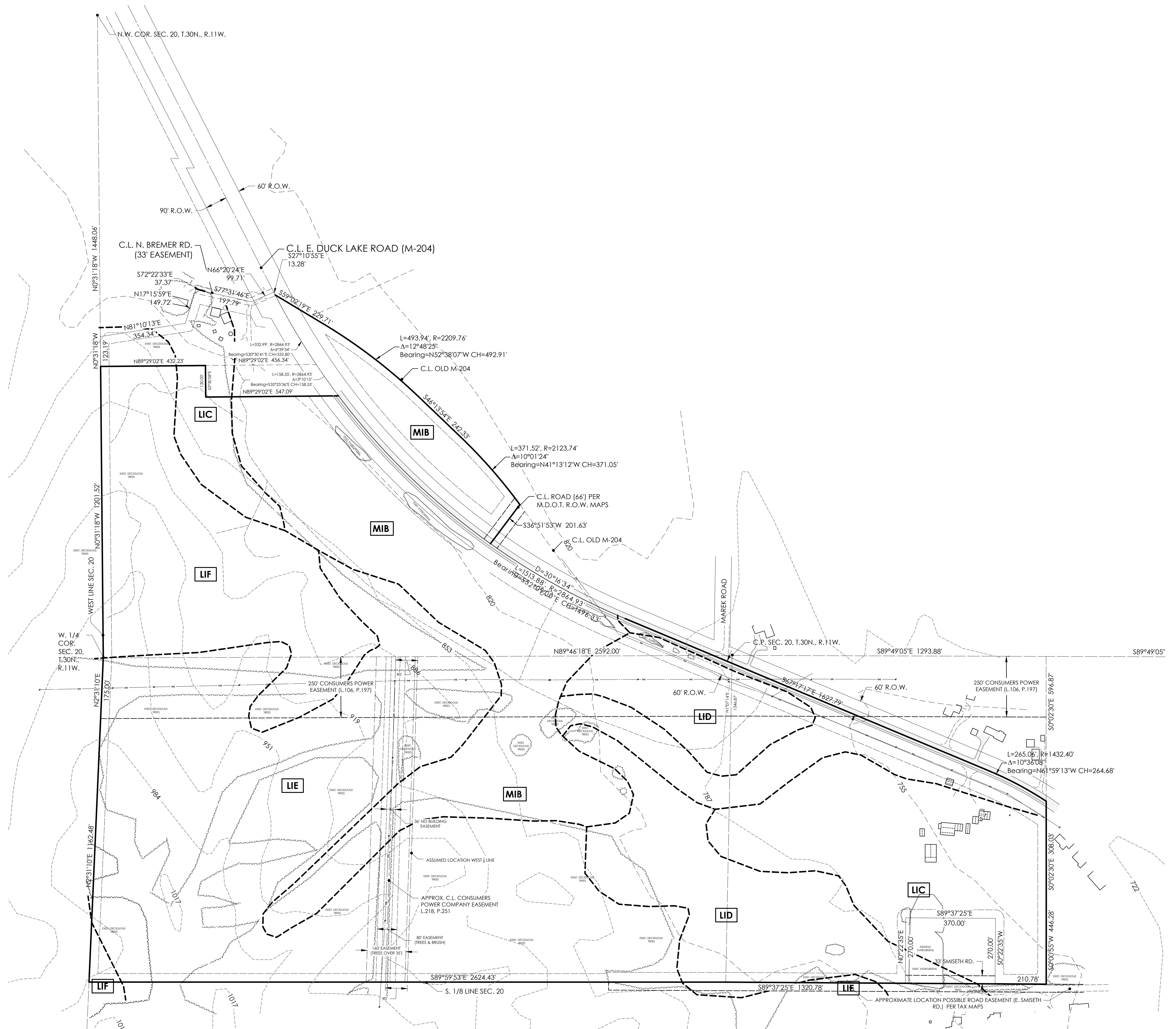
DR: mmmi CDR: dmc CREATED: 07.11.2024

PLAN NO: 24143

C2.0

LEELANAU COUNTY SOILS MAP LEGEND (M1089)

Map Unit Symbol	Map Unit Name
ARA	Alcona-Richter sandy loams, 0 to 2% slopes
	Depth to restrictive layer: More than 80 inches
	Natural Drainage Class: Moderately well drained
	Runoff Class: Low
	Infiltration: 0.57 to 1.98 in/hr
	Depth to Water Table: About 30 to 72 inches
LIC	Leelanau-East Lake loamy sands, 6 to 12% slopes
	Depth to restrictive layer: More than 80 inches
	Natural Drainage Class: Well drained
	Runoff Class: Very Low
	Infiltration: 1.98 to 5.95 in/hr
	Depth to Water Table: More than 80 inches
LID	Leelanau-East Lake loamy sands, 12 to 18% slopes
	Depth to restrictive layer: More than 80 inches
	Natural Drainage Class: Well drained
	Runoff Class: Very Low
	Infiltration: 1.98 to 5.95 in/hr
	Depth to Water Table: More than 80 inches
LIE	Leelanau-East Lake loamy sands, 18 to 25% slopes
	Depth to restrictive layer: More than 80 inches
	Natural Drainage Class: Well drained
	Runoff Class: Low
	Infiltration: 1.98 to 5.95 in/hr
	Depth to Water Table: More than 80 inches
LIF	Leelanau-East Lake loamy sands, 25 to 45% slopes
	Depth to restrictive layer: More than 80 inches
	Natural Drainage Class: Well drained
	Runoff Class: Low
	Infiltration: 1.98 to 5.95 in/hr
	Depth to Water Table: More than 80 inches
MIB	Mancelona-East lake loamy sands, 0 to 6% slopes
	Depth to restrictive layer: More than 80 inches
	Natural Drainage Class: Somewhat excessively drained
	Runoff Class: Very Low
	Infiltration: 1.98 to 5.95 in/hr
	Depth to Water Table: More than 80 inches



GRAPHIC SCALE: 1 inch = 200 feet

NOTE: Property boundaries, land contours, physical features and the like, illustrated on this plan are exhibited for planning purposes only. Mansfield Land Use Consultants makes no guarantee to the correctness nor the completeness of this information.

830 Cottageview Dr.
Suite 201
P.O. Box 4015
Traverse City, MI 49685
Phone: 231-946-9310
www.maaeps.com
info@maaeps.com

Mansfield
25
Year Anniversary
1999-2024
Land Use Consultants

REV#	DATE	BY	CHK	DESCRIPTION
01	07-11-24	dmc	dmc	Original design

Mary McManamy
OVERALL EXISTING CONDITIONS PLAN
Section 20, Town 30 North, Range 11 West
Suffons Bay Township, Leelanau County, Michigan

CONCEPTUAL
P.L.: dmc
D.R.: dmc
C.R.: dmc
C.R. DATE: 07.11.2024
JOB NO.: 24143
C2.0