

# RETAIL/INDUSTRIAL FOR LEASE



**30526 – 30548 Gratiot**

**Roseville, Michigan**

**Insite**  
**COMMERCIAL**

1111 W. Oakley Park Road  
Suite 220  
Commerce, Michigan 48390  
(248) 359-9000

[www.insitecommercial.com](http://www.insitecommercial.com)

# RETAIL/INDUSTRIAL FOR LEASE

**30526 – 30548**

**Gratiot Ave.**

**Roseville, Michigan**

<b>SUMMARY</b>	<b>page 1</b>
<b>PHOTOGRAPHS</b>	<b>page 2-4</b>
<b>DEMOGRAPHICS</b>	<b>page 5-6</b>
<b>TRAFFIC COUNTS</b>	<b>page 7</b>
<b>AREA MAPS</b>	<b>page 8</b>



**Location:** 30526-30548 Gratiot Avenue  
Roseville, MI 48066

**Building Size Available:** 16,120 Sq. Ft.

**Minimum Space Available:** 2,560 Sq. Ft.

**Lease Price:** \$10.00 Per Sq. Ft. NNN  
NNN's est. at \$2.50 PSF

**Parking:** Surface, 163 Spaces

**Zoning:** B-3: General Business

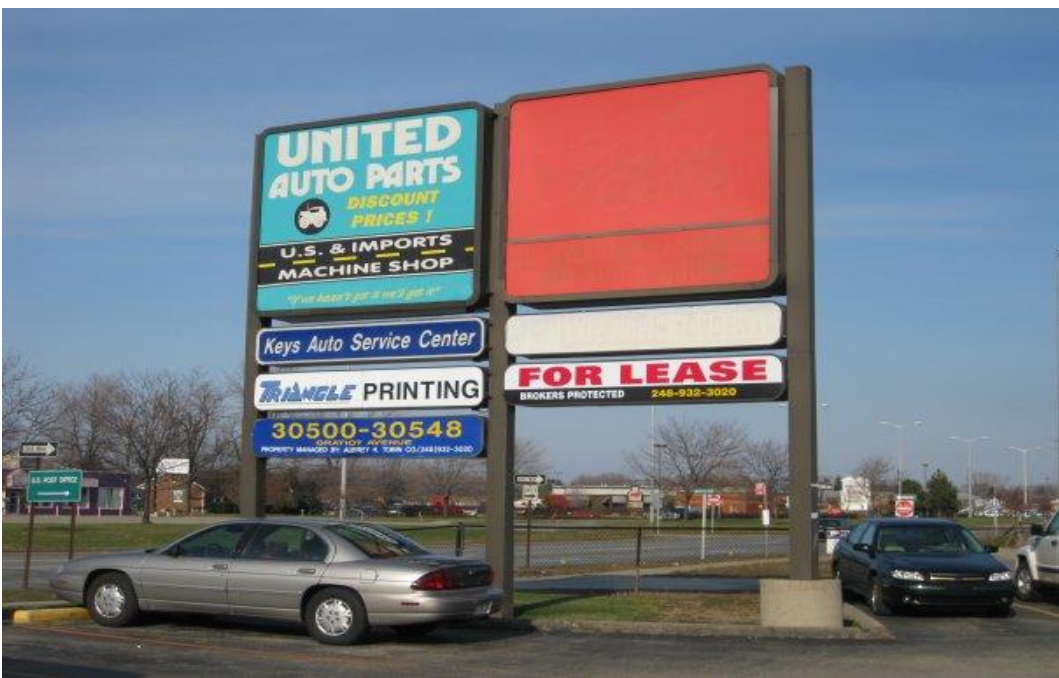
**Comments:** There is up to 16,120 sq. ft. of industrial space available for lease. Property has freeway exposure and signage on Gratiot Avenue with potential signage on I-94 as well. The space has a high ceiling height with wide bays, which make this site ideal for warehouse, distribution, storage or alternative uses, such as recreational centers, classrooms, etc. Rent is NNN and landlord is looking to make a deal.

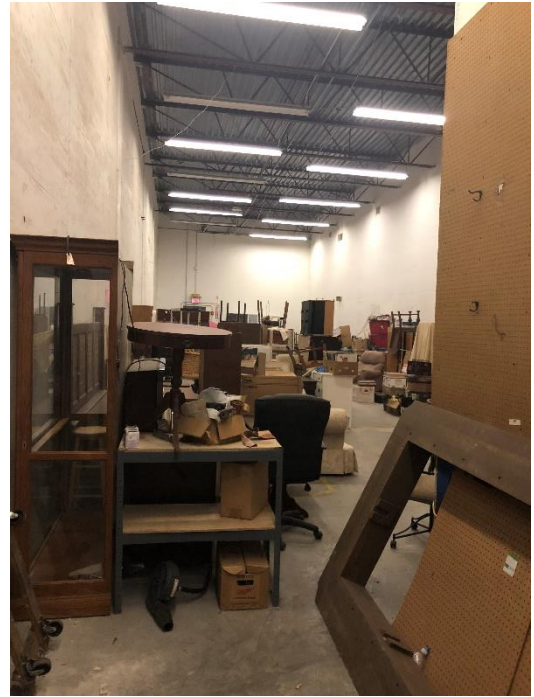
**For Information Contact:**

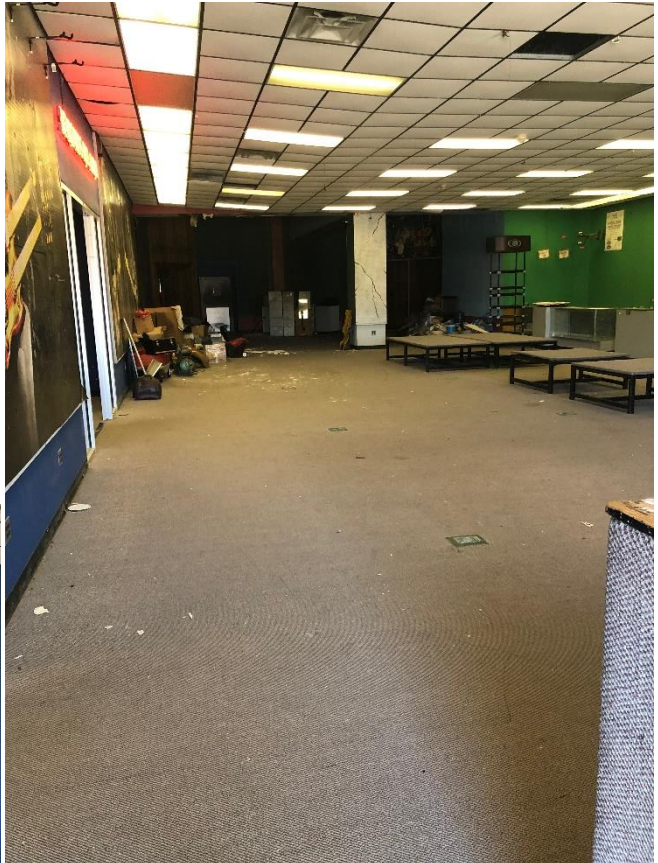
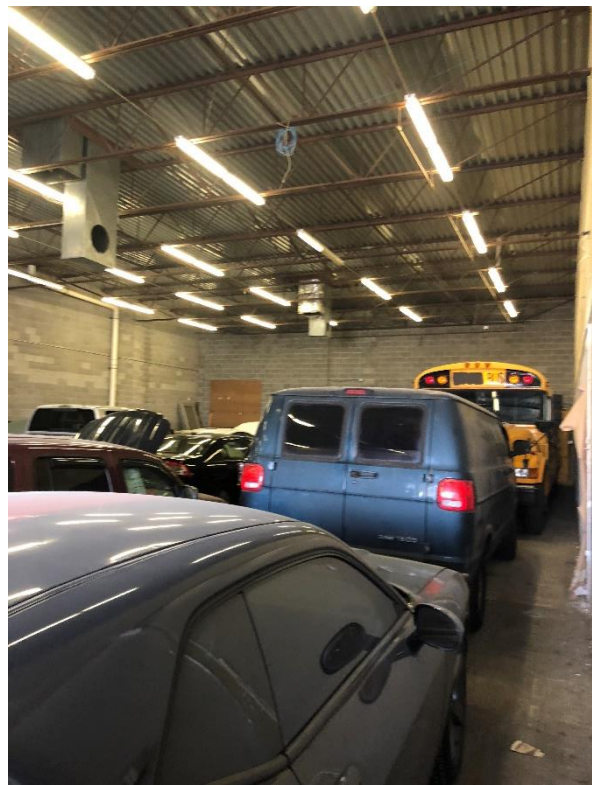
**Randy Thomas**

**248-359-9000 ext. 9**









## 30526 Gratiot Ave

## Roseville, MI 48066

1 mi radius 3 mi radius 5 mi radius

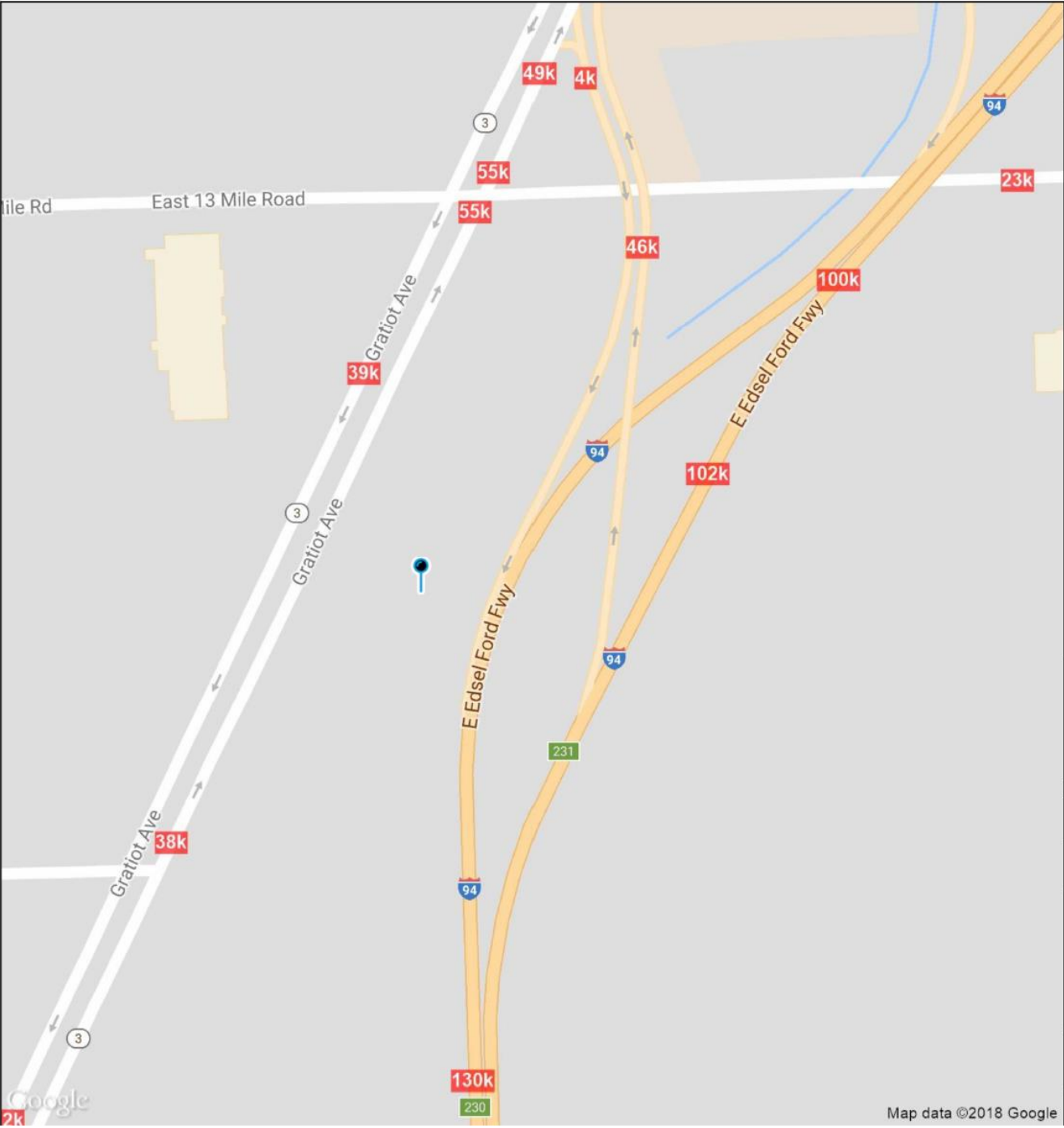
	1 mi radius	3 mi radius	5 mi radius	
POPULATION	2017 Estimated Population	14,050	121,641	286,755
	2022 Projected Population	14,464	124,917	294,519
	2010 Census Population	13,792	119,248	279,561
	2000 Census Population	14,201	123,030	287,663
	Projected Annual Growth 2017 to 2022	0.6%	0.5%	0.5%
	Historical Annual Growth 2000 to 2017	-0.1%	-0.1%	-
HOUSEHOLDS	2017 Estimated Households	6,343	51,665	122,194
	2022 Projected Households	6,630	53,828	127,358
	2010 Census Households	6,068	49,839	117,802
	2000 Census Households	6,300	50,443	120,002
	Projected Annual Growth 2017 to 2022	0.9%	0.8%	0.8%
	Historical Annual Growth 2000 to 2017	-	0.1%	0.1%
AGE	2017 Est. Population Under 10 Years	10.9%	10.5%	10.4%
	2017 Est. Population 10 to 19 Years	11.3%	11.9%	11.5%
	2017 Est. Population 20 to 29 Years	14.1%	13.5%	13.6%
	2017 Est. Population 30 to 44 Years	18.6%	18.0%	17.8%
	2017 Est. Population 45 to 59 Years	21.5%	21.8%	21.5%
	2017 Est. Population 60 to 74 Years	15.1%	16.1%	16.3%
	2017 Est. Population 75 Years or Over	8.5%	8.2%	8.9%
	2017 Est. Median Age	40.0	40.8	41.3
MARITAL STATUS & GENDER	2017 Est. Male Population	48.0%	48.1%	47.8%
	2017 Est. Female Population	52.0%	51.9%	52.2%
	2017 Est. Never Married	35.0%	34.6%	34.8%
	2017 Est. Now Married	40.7%	41.7%	41.4%
	2017 Est. Separated or Divorced	16.1%	16.0%	16.0%
	2017 Est. Widowed	8.2%	7.7%	7.8%
INCOME	2017 Est. HH Income \$200,000 or More	1.6%	1.9%	2.0%
	2017 Est. HH Income \$150,000 to \$199,999	2.1%	3.4%	3.8%
	2017 Est. HH Income \$100,000 to \$149,999	9.9%	12.4%	12.4%
	2017 Est. HH Income \$75,000 to \$99,999	11.6%	13.3%	13.3%
	2017 Est. HH Income \$50,000 to \$74,999	18.6%	20.8%	20.3%
	2017 Est. HH Income \$35,000 to \$49,999	20.1%	15.8%	15.6%
	2017 Est. HH Income \$25,000 to \$34,999	11.5%	10.6%	10.9%
	2017 Est. HH Income \$15,000 to \$24,999	12.4%	11.1%	11.1%
	2017 Est. HH Income Under \$15,000	12.1%	10.8%	10.6%
	2017 Est. Average Household Income	\$57,727	\$68,031	\$68,583
	2017 Est. Median Household Income	\$44,475	\$53,166	\$53,773
	2017 Est. Per Capita Income	\$26,085	\$29,000	\$29,382
	2017 Est. Total Businesses	602	4,409	9,778
2017 Est. Total Employees	8,242	46,398	98,588	

30526 Gratiot Ave

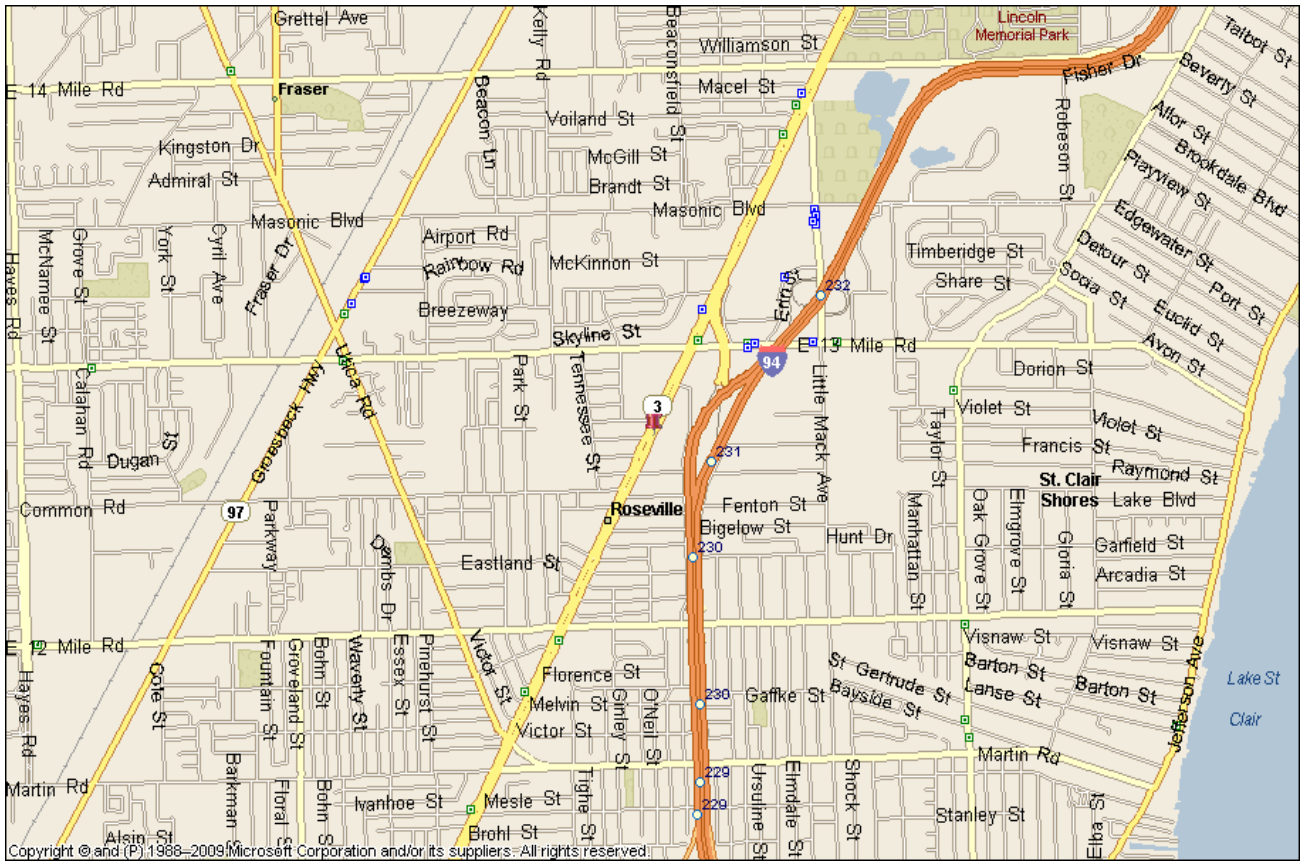
Roseville, MI 48066

1 mi radius 3 mi radius 5 mi radius

	1 mi radius	3 mi radius	5 mi radius	
<b>RACE</b>	2017 Est. White	78.3%	81.5%	78.6%
	2017 Est. Black	16.0%	12.8%	15.5%
	2017 Est. Asian or Pacific Islander	1.9%	2.4%	2.7%
	2017 Est. American Indian or Alaska Native	0.5%	0.3%	0.3%
	2017 Est. Other Races	3.3%	3.0%	2.9%
<b>HISPANIC</b>	2017 Est. Hispanic Population	305	2,953	6,799
	2017 Est. Hispanic Population	2.2%	2.4%	2.4%
	2022 Proj. Hispanic Population	2.9%	3.3%	3.2%
	2010 Hispanic Population	1.8%	2.0%	2.0%
<b>EDUCATION (Adults 25 or Older)</b>	2017 Est. Adult Population (25 Years or Over)	10,039	86,960	206,046
	2017 Est. Elementary (Grade Level 0 to 8)	3.5%	2.8%	3.1%
	2017 Est. Some High School (Grade Level 9 to 11)	8.5%	7.9%	7.4%
	2017 Est. High School Graduate	34.2%	34.4%	32.9%
	2017 Est. Some College	29.1%	27.5%	26.6%
	2017 Est. Associate Degree Only	11.0%	10.6%	10.6%
	2017 Est. Bachelor Degree Only	9.0%	11.5%	12.8%
	2017 Est. Graduate Degree	4.8%	5.4%	6.6%
<b>HOUSING</b>	2017 Est. Total Housing Units	6,606	53,703	127,188
	2017 Est. Owner-Occupied	62.9%	72.1%	71.4%
	2017 Est. Renter-Occupied	33.2%	24.1%	24.7%
	2017 Est. Vacant Housing	4.0%	3.8%	3.9%
<b>HOMES BUILT BY YEAR</b>	2010 Homes Built 2005 or later	0.2%	0.2%	0.2%
	2010 Homes Built 2000 to 2004	3.2%	3.6%	4.2%
	2010 Homes Built 1990 to 1999	8.9%	7.6%	7.4%
	2010 Homes Built 1980 to 1989	11.1%	7.1%	8.3%
	2010 Homes Built 1970 to 1979	11.5%	13.8%	14.7%
	2010 Homes Built 1960 to 1969	17.1%	21.4%	23.7%
	2010 Homes Built 1950 to 1959	35.0%	35.8%	31.4%
	2010 Homes Built Before 1949	16.6%	13.1%	12.9%
<b>HOME VALUES</b>	2010 Home Value \$1,000,000 or More	-	-	-
	2010 Home Value \$500,000 to \$999,999	1.1%	1.2%	1.1%
	2010 Home Value \$400,000 to \$499,999	1.2%	1.4%	1.5%
	2010 Home Value \$300,000 to \$399,999	4.9%	4.8%	4.9%
	2010 Home Value \$200,000 to \$299,999	10.7%	12.7%	13.3%
	2010 Home Value \$150,000 to \$199,999	14.6%	15.2%	16.4%
	2010 Home Value \$100,000 to \$149,999	23.0%	24.5%	25.5%
	2010 Home Value \$50,000 to \$99,999	34.3%	31.3%	27.7%
	2010 Home Value \$25,000 to \$49,999	9.7%	8.1%	8.2%
	2010 Home Value Under \$25,000	4.4%	4.0%	4.5%
	2010 Median Home Value	\$107,078	\$114,087	\$118,882
	2010 Median Rent	\$705	\$717	\$728

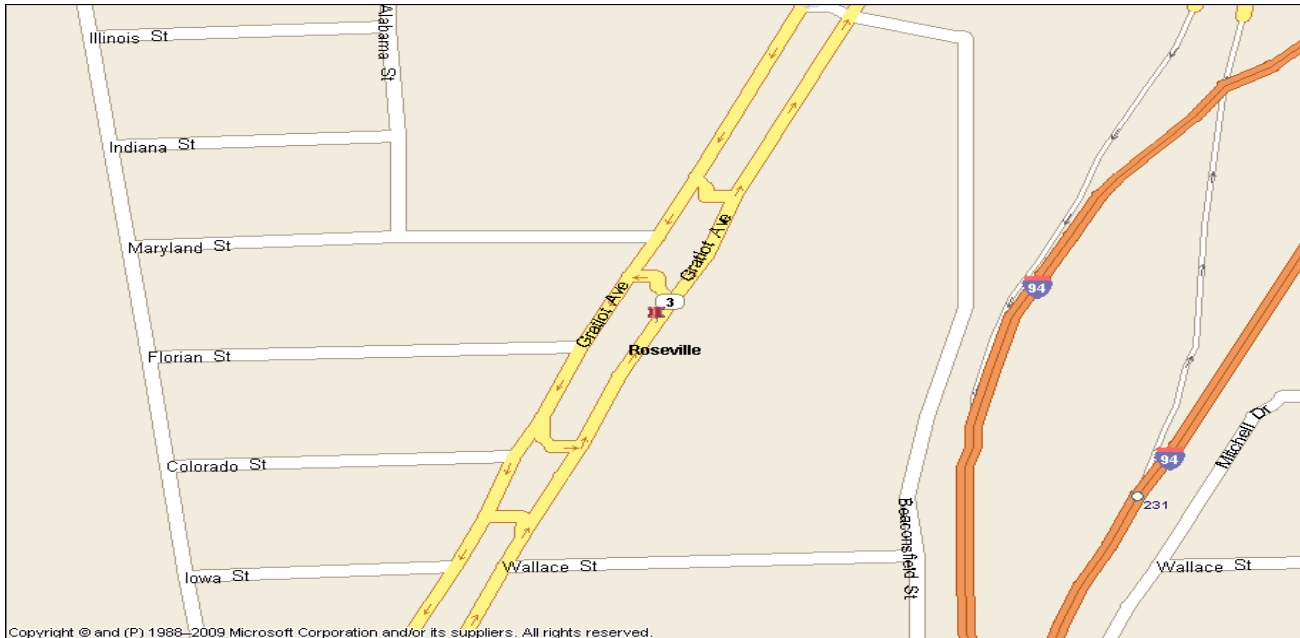


# REGIONAL



Copyright © and (P) 1988-2009 Microsoft Corporation and/or its suppliers. All rights reserved.

# LOCAL



Copyright © and (P) 1988-2009 Microsoft Corporation and/or its suppliers. All rights reserved.

