

Free Standing Downtown Commercial Building

202 Miller Ave, Ann Arbor, MI 48104



FOR SALE



OFFERING SUMMARY

| | |
|-------------|---------------------------------|
| Sale Price: | \$1,375,000 |
| Lot Size: | 66' X 44' |
| Zoning: | C2B (Business Service District) |
| APN: | 09-29-150-005 |

DEMOGRAPHICS

| | 1 MILE | 3 MILES | 5 MILES |
|-------------------|----------|-----------|-----------|
| Total Households | 11,722 | 41,835 | 61,135 |
| Total Population | 29,156 | 103,923 | 148,835 |
| Average HH Income | \$87,444 | \$120,392 | \$129,406 |

PROPERTY HIGHLIGHTS

- Free standing downtown, corner location
- One block from Main St at the corner of Miller Avenue and N. Ashley Street
- Desirable downtown location with high visibility
- Easy access to on-site parking with additional street parking
- Municipal parking structure across the street
- Fully renovated in 2020
- Conveniently located near US-14, US-23, and I-94

Michael Jurgenson, CCIM

734.222.7522

mikej@swishercommercial.com

Free Standing Downtown Ann Arbor Retail Corner

202 Miller Ave, Ann Arbor, MI 48104



FOR SALE

PROPERTY DESCRIPTION

A prime piece of commercial real estate featuring a free-standing building located in the heart of bustling downtown Ann Arbor for sale or lease.

Highlights:

Situated one block from Main St at the corner of Miller Avenue and N. Ashley Street

Proximity to Ann Arbor City Hall, police and fire departments, and city and county courthouses ensures consistent foot traffic

Location Perks:

Desirable downtown location with high visibility

Easy access to on-site parking with additional street parking

Municipal parking structure across the street for overflow parking needs

Facility Features:

Fully renovated in 2020, showcasing modern amenities and design

Interior designed by the renowned Damian Farrell Design Group
Building zoning allows for cannabis provisioning

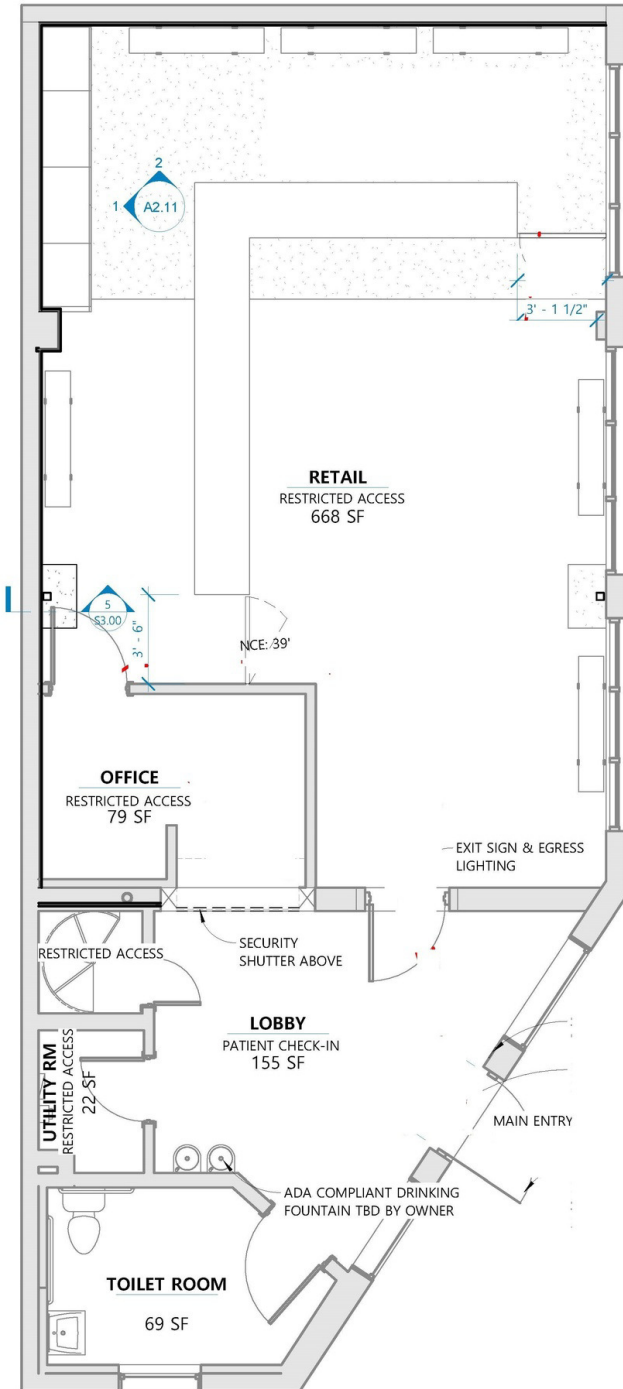
Accessibility:

Conveniently located near US-14, US-23, and I-94, providing easy access for both local and out-of-town customers.

Contact the broker for additional details and to schedule a private showing.

LOCATION DESCRIPTION

Desirable downtown location with high visibility situated one block from Main St at the corner of Miller Avenue and N. Ashley Street. Proximity to Ann Arbor City Hall, police and fire departments, and city and county courthouses ensures consistent foot traffic. Location perks includes easy access to on-site parking with additional street parking and municipal parking structure across the street for overflow parking needs.



Michael Jurgenson, CCIM

734.222.7522

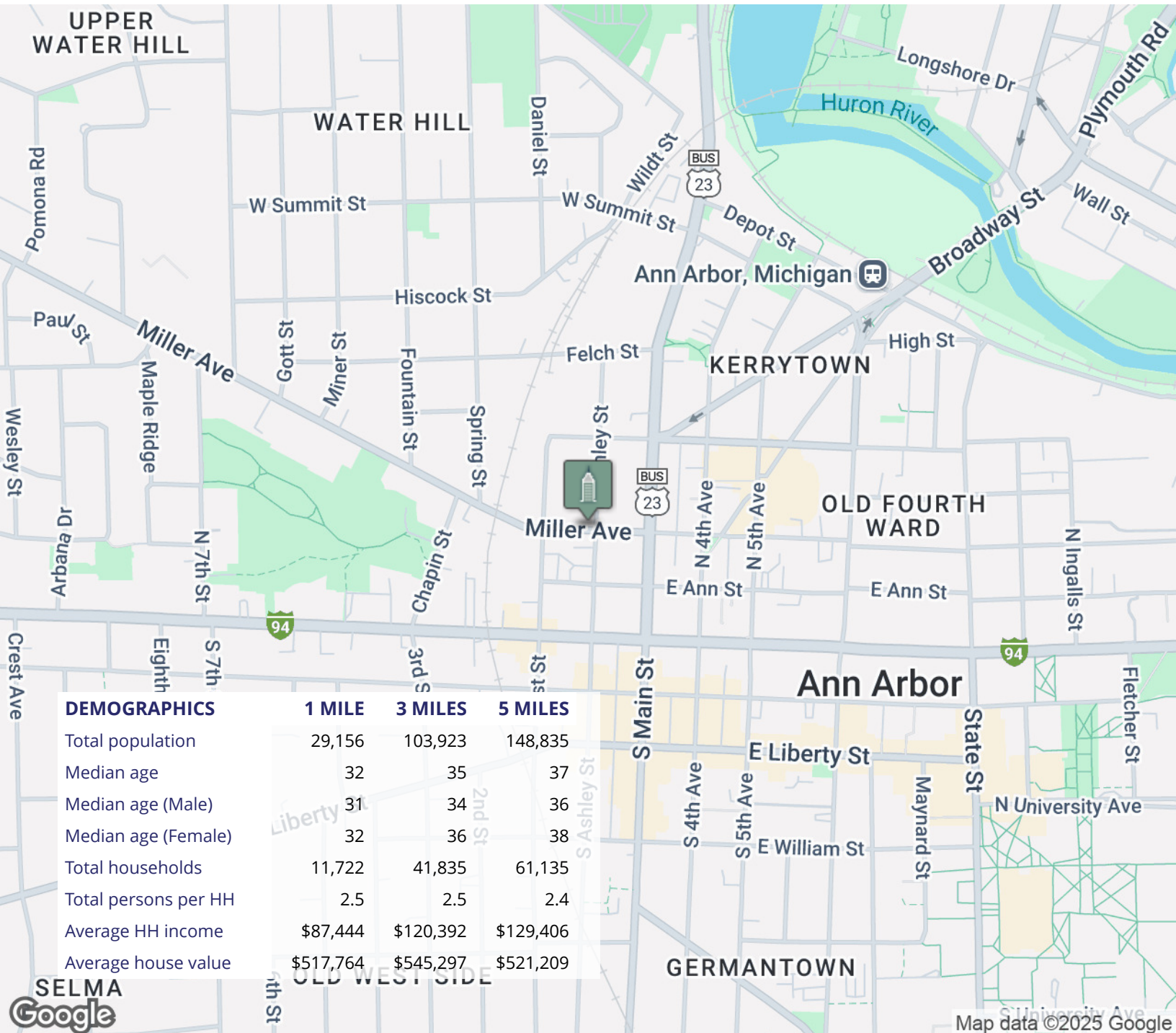
mikej@swishercommercial.com

Free Standing Downtown Ann Arbor Retail Corner

202 Miller Ave, Ann Arbor, MI 48104



FOR SALE



Michael Jurgenson, CCIM

734.222.7522

mikej@swishercommercial.com