

279 SUMMIT DRIVE
WATERFORD, MICHIGAN

RETAIL FOR LEASE
40,030 Square Feet Available



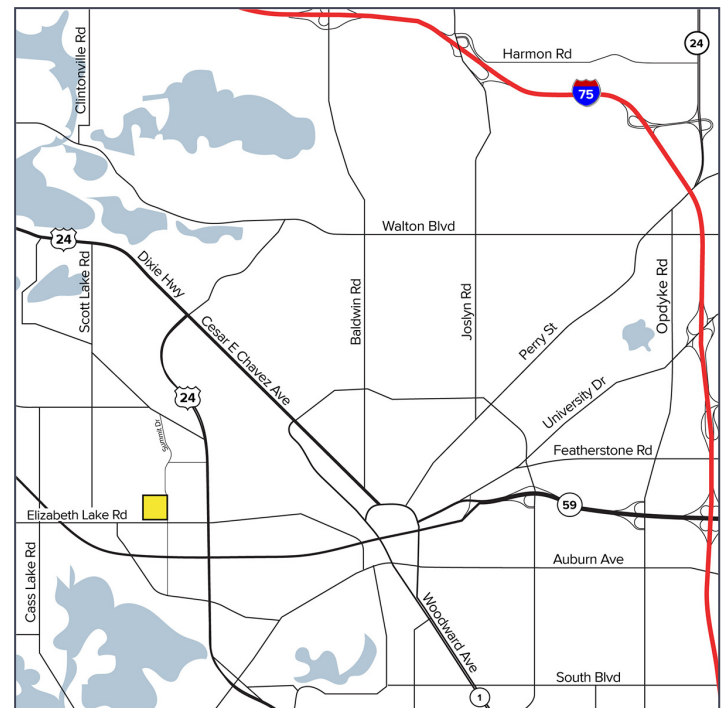
**SIGNATURE
ASSOCIATES**
KNOW SIGNATURE | KNOW RESULTS

SUMMIT WEST I



PROPERTY FEATURES

- 40,030 square feet move-in ready medical facility
- Features multiple exam rooms, offices, conference areas, reception and waiting areas, and ADA restrooms
- Pharmacy space also available
- Ample parking & monument signage
- Ideal for medical, behavioral health, or wellness uses
- The property offers excellent accessibility near M-59 and Telegraph Road
- Featuring strong traffic counts and convenient highway connections
- Lease Rate: \$8.00 - \$10.00/sq. ft.



For more information, please contact:

ANATOLA SESI
(248) 359 0629
asesi@signatureassociates.com

RICHARD PIFER
(248) 799 3158
rpifer@signatureassociates.com

MARVIN PETROUS
(248) 359 0647
mpetrous@signatureassociates.com

Information is subject to verification and no liability for errors or omissions is assumed. Price is subject to change and listing withdrawal.

279 Summit Drive – Waterford, Michigan

Retail For Lease

40,030
Square Feet
AVAILABLE



For more information, please contact:

ANATOLA SESI
(248) 359 0629

RICHARD PIFER
(248) 799 3158

MARVIN PETROUS
(248) 359 0647

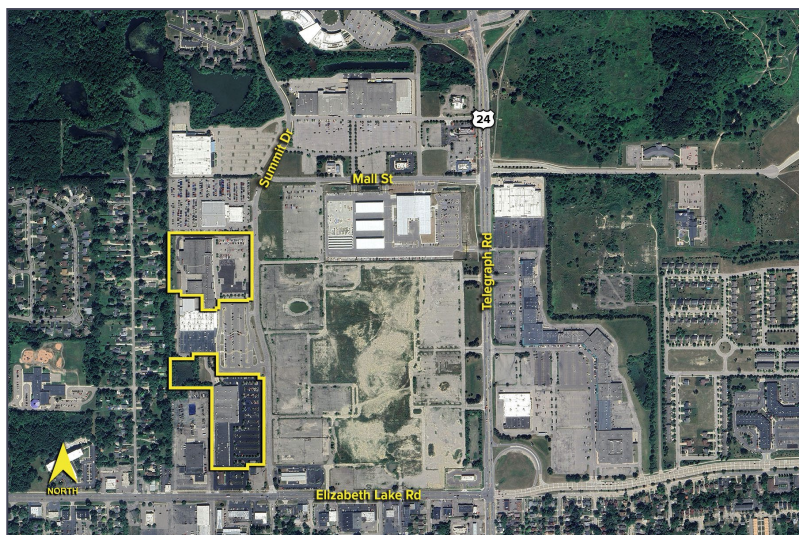
SIGNATURE ASSOCIATES
One Towne Square, Suite 1200
Southfield, MI 48076
www.signatureassociates.com

Information is subject to verification and no liability for errors or omissions is assumed. Price is subject to change and listing withdrawal.

279 Summit Drive – Waterford, Michigan

Retail For Lease

40,030
Square Feet
AVAILABLE



DEMOGRAPHICS

	POPULATION	MED. HH INCOME
1 MILE	9,499	\$60,881
3 MILE	74,741	\$66,803
5 MILE	161,941	\$77,770

TRAFFIC COUNTS (TWO-WAY)

39,045	Telegraph Rd. N. of Elizabeth Lake Rd.
39,211	Telegraph Rd. S. of Elizabeth Lake Rd.
18,836	Elizabeth Lake Rd. W. of Telegraph Rd.
19,650	Elizabeth Lake Rd. E. of Telegraph Rd.



For more information, please contact:

ANATOLA SESI
(248) 359 0629

RICHARD PIFER
(248) 799 3158

MARVIN PETROUS
(248) 359 0647

SIGNATURE ASSOCIATES
One Towne Square, Suite 1200
Southfield, MI 48076
www.signatureassociates.com