

1700 HARMON ROAD
AUBURN HILLS, MICHIGAN

HI-TECH FOR LEASE
5,000 Square Feet Available

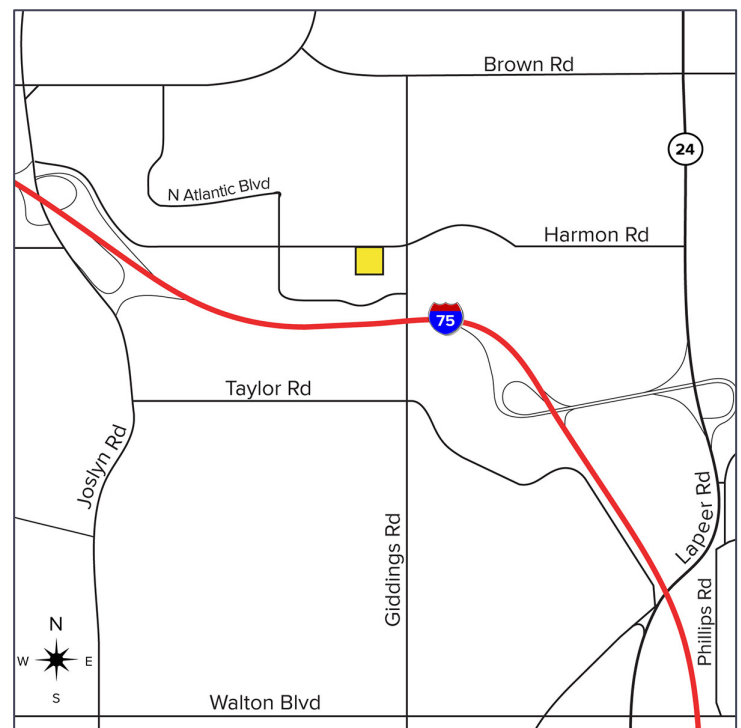


**SIGNATURE
ASSOCIATES**
KNOW SIGNATURE | KNOW RESULTS



PROPERTY FEATURES

- 5,000 square feet of office for lease
- 10'-16' clear height
- State-of-the-art office finishes, furniture can be included
- First-class office, very hi-tech, perfect for sales organization, engineers, or call center
- Private offices, conference rooms, work-out facility, and kitchen area.
- Heavy parking with main road frontage
- Heating, ventilation and air-conditioning
- Located on 3.250 acres
- Lease Rate: \$12.50 sq. ft./NNN



For more information, please contact:

JOE BANYAI
(248) 948 0108
jbanyai@signatureassociates.com

PAUL HOGE
(248) 948 0103
paulhoge@signatureassociates.com

SIGNATURE ASSOCIATES
One Towne Square, Suite 1200
Southfield, MI 48076
www.signatureassociates.com

1700 Harmon Road – Auburn Hills, Michigan

Hi-Tech For Lease

5,000
Square Feet
AVAILABLE

Interior Photos



For more information, please contact:

JOE BANYAI
(248) 948 0108
jbanyai@signatureassociates.com

PAUL HOGE
(248) 948 0103
paulhoge@signatureassociates.com

SIGNATURE ASSOCIATES
One Towne Square, Suite 1200
Southfield, MI 48076
www.signatureassociates.com

1700 Harmon Road – Auburn Hills, Michigan

Hi-Tech For Lease

5,000
Square Feet
AVAILABLE

Interior Photos



For more information, please contact:

JOE BANYAI
(248) 948 0108
jbanyai@signatureassociates.com

PAUL HOGE
(248) 948 0103
paulhoge@signatureassociates.com

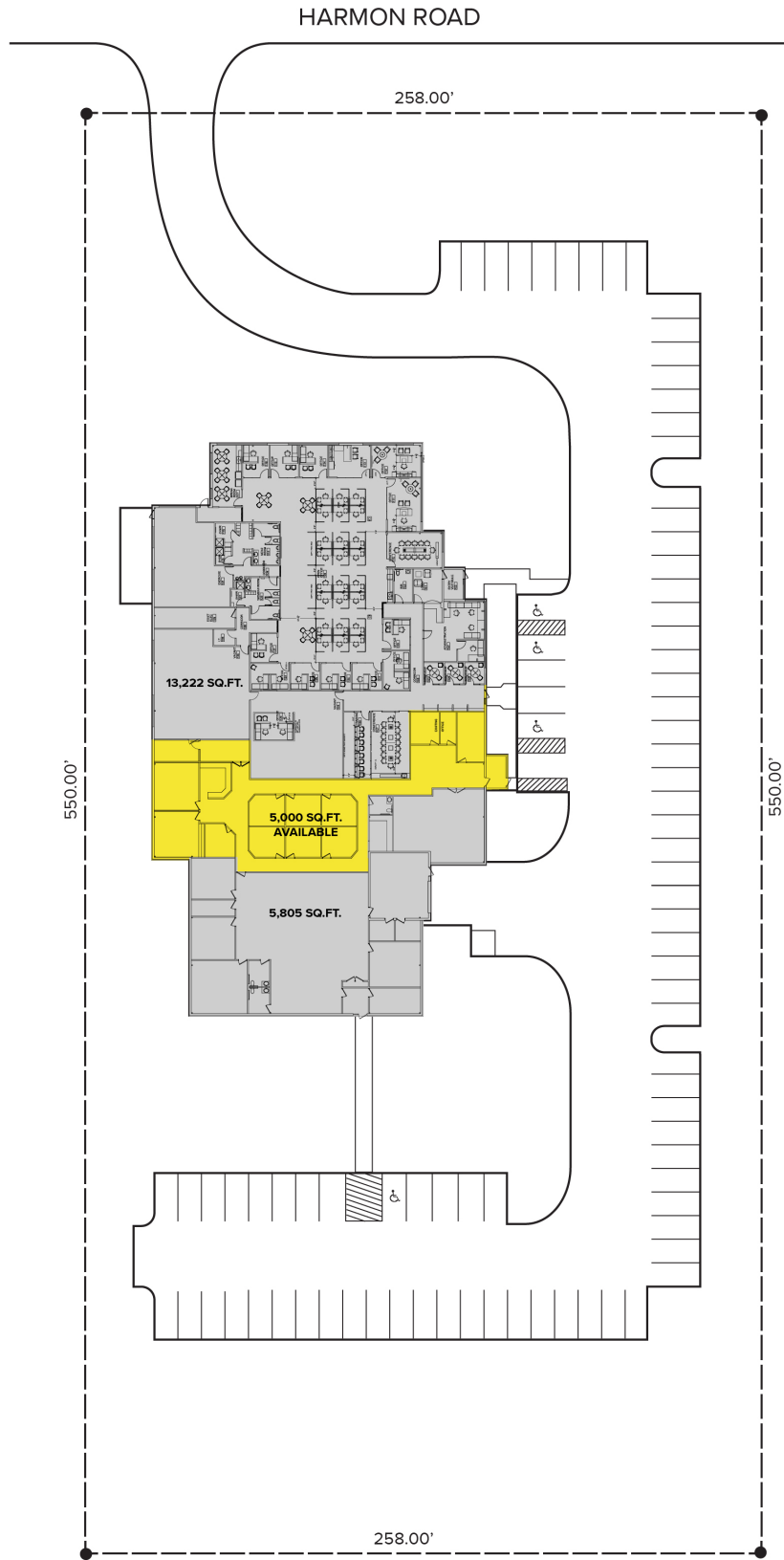
SIGNATURE ASSOCIATES
One Towne Square, Suite 1200
Southfield, MI 48076
www.signatureassociates.com

1700 Harmon Road – Auburn Hills, Michigan

Hi-Tech For Lease

5,000
Square Feet
AVAILABLE

Site Plan



For more information, please contact:

JOE BANYAI
(248) 948 0108
jbanyai@signatureassociates.com

PAUL HOGE
(248) 948 0103
paulhoge@signatureassociates.com

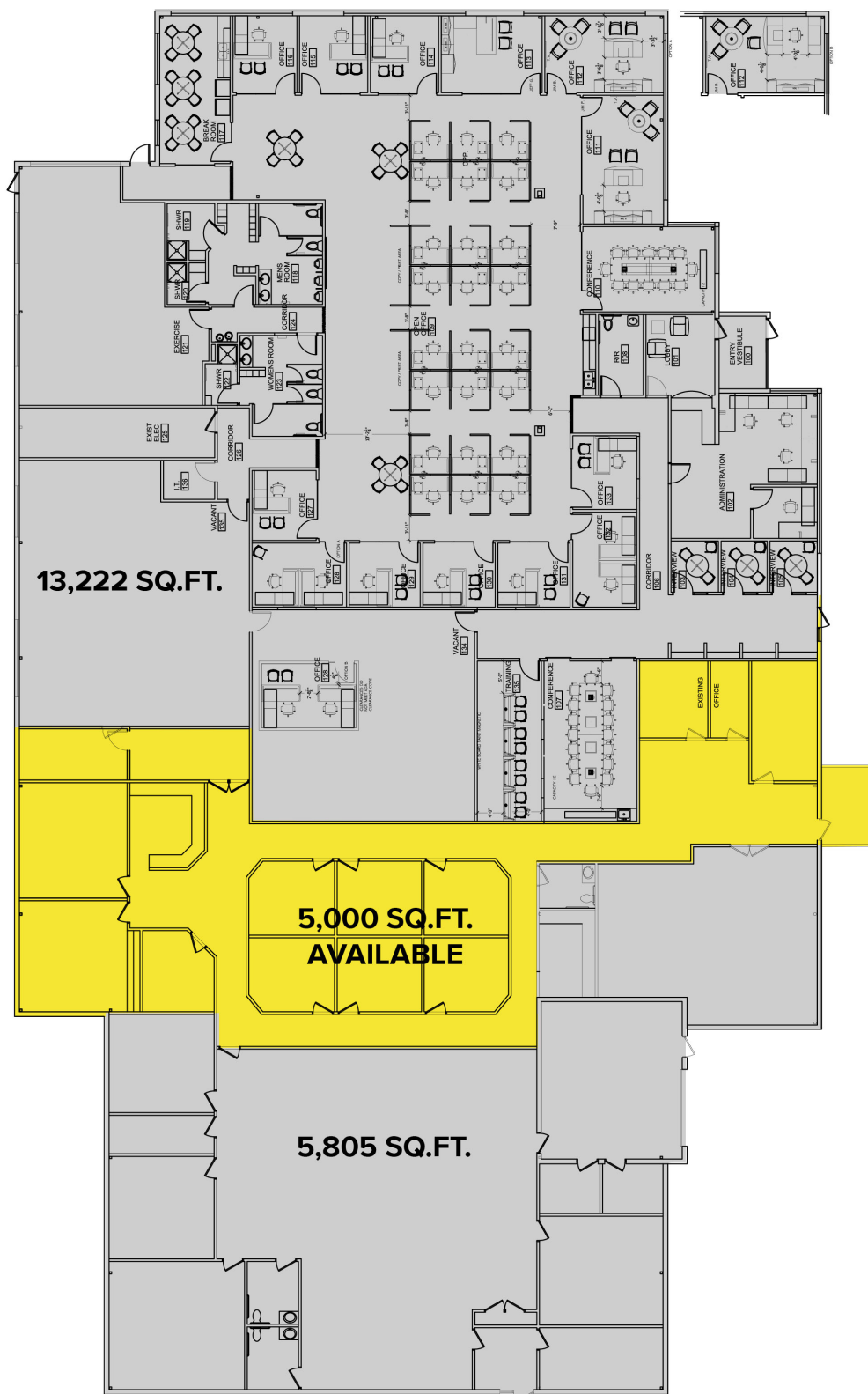
SIGNATURE ASSOCIATES
One Towne Square, Suite 1200
Southfield, MI 48076
www.signatureassociates.com

1700 Harmon Road – Auburn Hills, Michigan

Hi-Tech For Lease

5,000
Square Feet
AVAILABLE

Floor Plan



For more information, please contact:

JOE BANYAI
(248) 948 0108
jbanyai@signatureassociates.com

PAUL HOGE
(248) 948 0103
paulhoge@signatureassociates.com

SIGNATURE ASSOCIATES
One Towne Square, Suite 1200
Southfield, MI 48076
www.signatureassociates.com

1700 Harmon Road – Auburn Hills, Michigan

Hi-Tech For Lease

5,000
Square Feet
AVAILABLE

Aerial



For more information, please contact:

JOE BANYAI
(248) 948 0108
jbanyai@signatureassociates.com

PAUL HOGE
(248) 948 0103
paulhoge@signatureassociates.com

SIGNATURE ASSOCIATES
One Towne Square, Suite 1200
Southfield, MI 48076
www.signatureassociates.com