



Industrial | For Lease | 3,750 SF

**Industrial/Warehouse Building
Kalamazoo Township (near Sprinkle
Road)**

**3637 E Michigan Avenue
Kalamazoo, MI 49048**

Overview

Great industrial/warehouse building with OH door and private bathroom. This is a building for a contractor, repair shop, general storage, car enthusiast. Wide-open space for any type of industrial type user. These small industrial spaces are hard to find in this market. Potential for additional space if necessary. The property is located on E. Michigan just west of Sprinkle Road. This suite is readily available for a new tenant. Don't miss this one.

Lease Price \$7.95/SF Modified

Matthew Callander, CCIM
269.384.8368 [direct]
269.271.5187 [mobile]
mcallander@ccmichigan.com

Sandy Edwards, CCIM
269.373.8102 [direct]
269.207.0971 [mobile]
sedwards@ccmichigan.com

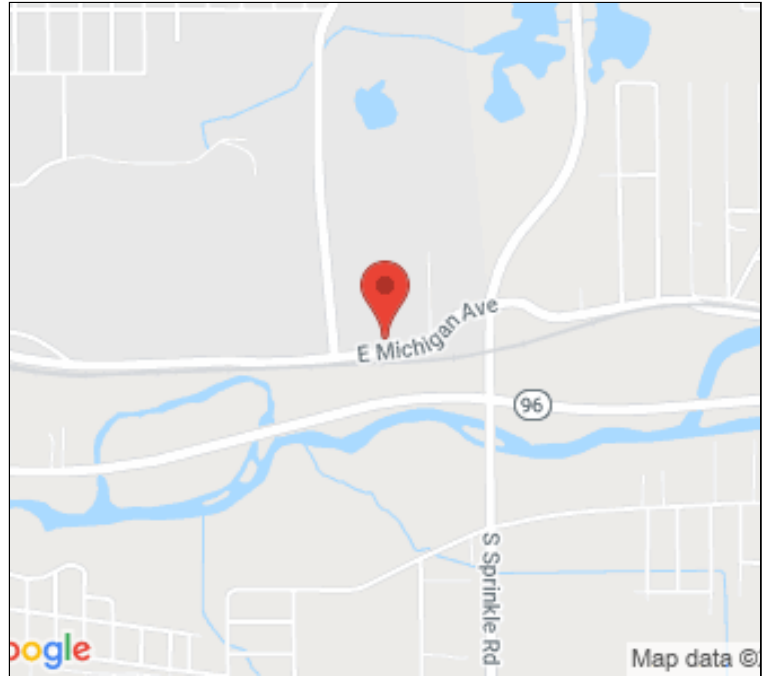




PROPERTY FEATURES



County:	Kalamazoo
Municipality:	Kalamazoo Township
Gross Size:	7,650 SF
Available for Lease:	3,750 SF
Buildings / Units:	1 Building / 1 Unit
Occupancy Info:	Vacant
Total Acres:	0.81 Acres
Year Built / Renovated:	1927 / 2019
Zoning Code / Description:	I-2 / Light Industrial
Between Streets:	Sprinkle & Nazareth
Construction:	Block / Block
Roof:	Membrane
Water Source:	Public
Parking # / Type:	5 / Gravel
Grade Level Doors:	One Door
Ceiling Ht Min/Max:	12' - 13'



3637 E Michigan Avenue | Kalamazoo, MI 49048

Matthew Callander, CCIM
269.384.8368 [direct]
269.271.5187 [mobile]
mcallander@ccmichigan.com

Sandy Edwards, CCIM
269.373.8102 [direct]
269.207.0971 [mobile]
sedwards@ccmichigan.com





INTERIOR PHOTOS



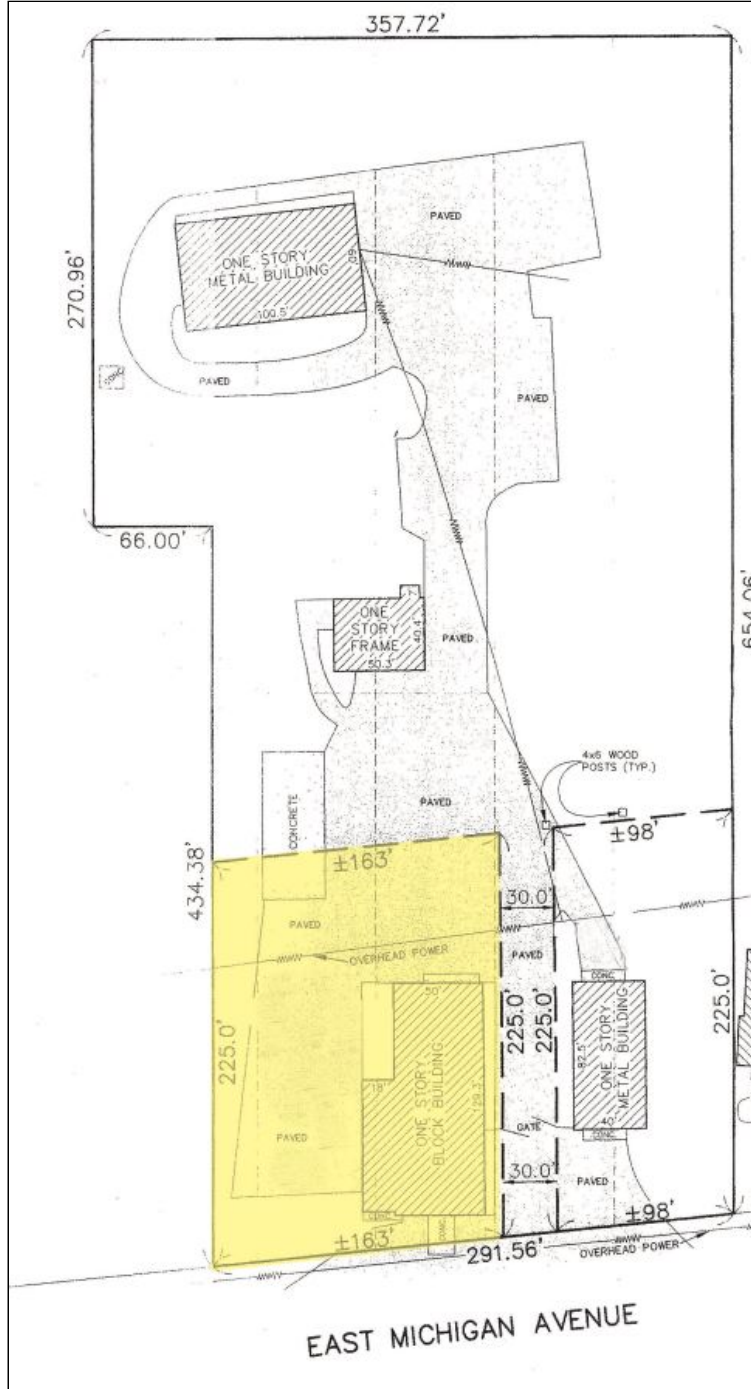
3637 E Michigan Avenue | Kalamazoo, MI 49048

Matthew Callander, CCIM
269.384.8368 [direct]
269.271.5187 [mobile]
mcallander@ccmichigan.com

Sandy Edwards, CCIM
269.373.8102 [direct]
269.207.0971 [mobile]
sedwards@ccmichigan.com



SITE PLAN



3637 E Michigan Avenue | Kalamazoo, MI 49048

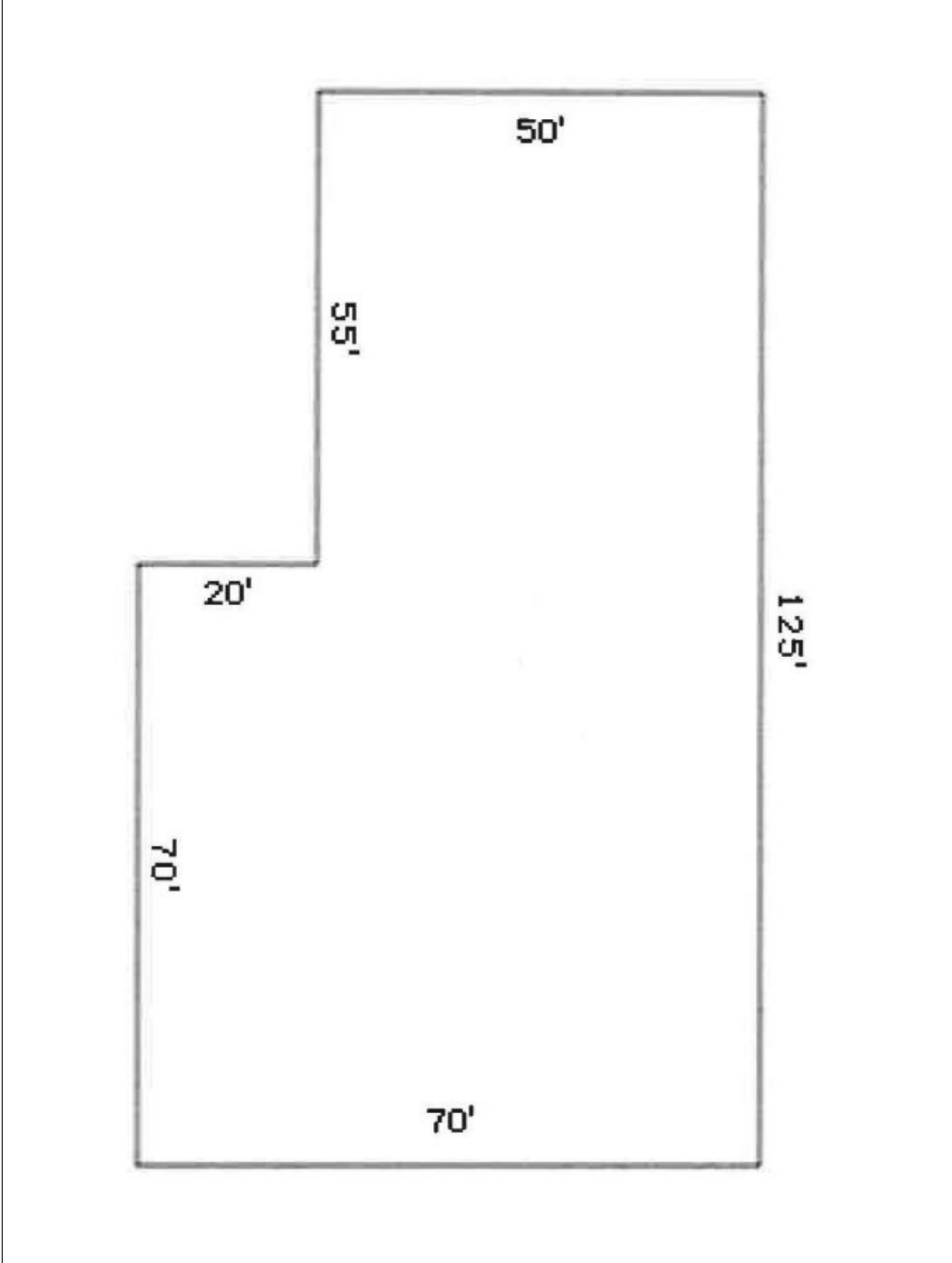
Matthew Callander, CCIM
269.384.8368 [direct]
269.271.5187 [mobile]
mcallander@ccmichigan.com

Sandy Edwards, CCIM
269.373.8102 [direct]
269.207.0971 [mobile]
sedwards@ccmichigan.com





BUILDING SKETCH



3637 E Michigan Avenue | Kalamazoo, MI 49048

Matthew Callander, CCIM
269.384.8368 [direct]
269.271.5187 [mobile]
mcallander@ccmichigan.com

Sandy Edwards, CCIM
269.373.8102 [direct]
269.207.0971 [mobile]
sedwards@ccmichigan.com





PLAT MAP



3637 E Michigan Avenue | Kalamazoo, MI 49048

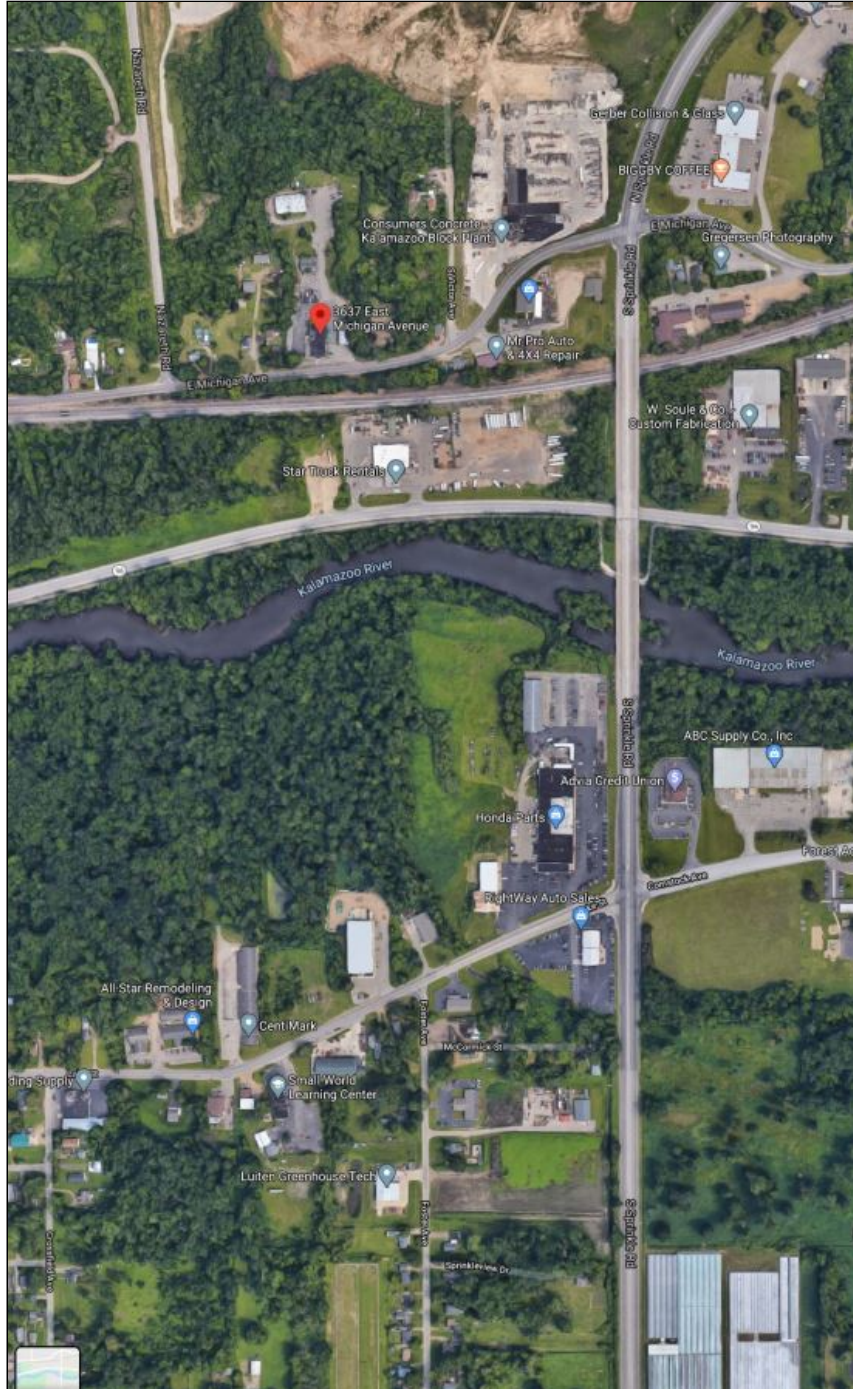
Matthew Callander, CCIM
269.384.8368 [direct]
269.271.5187 [mobile]
mcallander@ccmichigan.com

Sandy Edwards, CCIM
269.373.8102 [direct]
269.207.0971 [mobile]
sedwards@ccmichigan.com





AERIAL PHOTO



3637 E Michigan Avenue | Kalamazoo, MI 49048

Matthew Callander, CCIM
269.384.8368 [direct]
269.271.5187 [mobile]
mcallander@ccmichigan.com

Sandy Edwards, CCIM
269.373.8102 [direct]
269.207.0971 [mobile]
sedwards@ccmichigan.com

