

2674 W. JEFFERSON AVENUE  
TRENTON, MICHIGAN

OFFICE FOR LEASE  
2,286 – 8,000 Square Feet Available



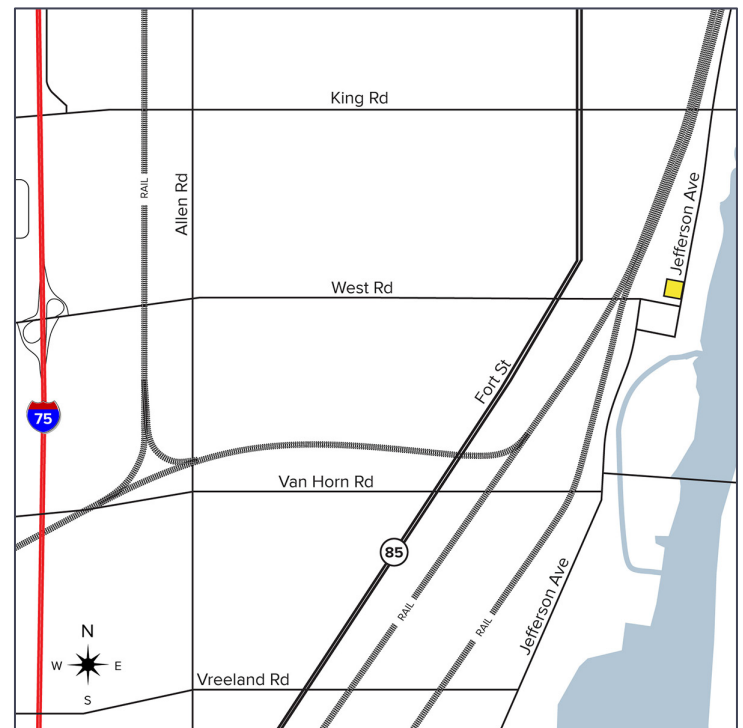
**SIGNATURE  
ASSOCIATES**  
KNOW SIGNATURE | KNOW RESULTS

**TRENTON WELLNESS CENTER**



## PROPERTY FEATURES

- 2,286 – 3,093 square feet on second floor finish-to-suit medical or general office spaces available
- 8,000 square foot lower-level space is also available for general office, retail, gym, or storage needs
- Opportunity to locate in Downtown Trenton
- Zoned CBD
- Near Corewell and Henry Ford Hospitals
- On-site and municipal parking available
- Completely renovated in 2022
- Lease Rate: \$12.00 - \$25.00/sq. ft. NNN

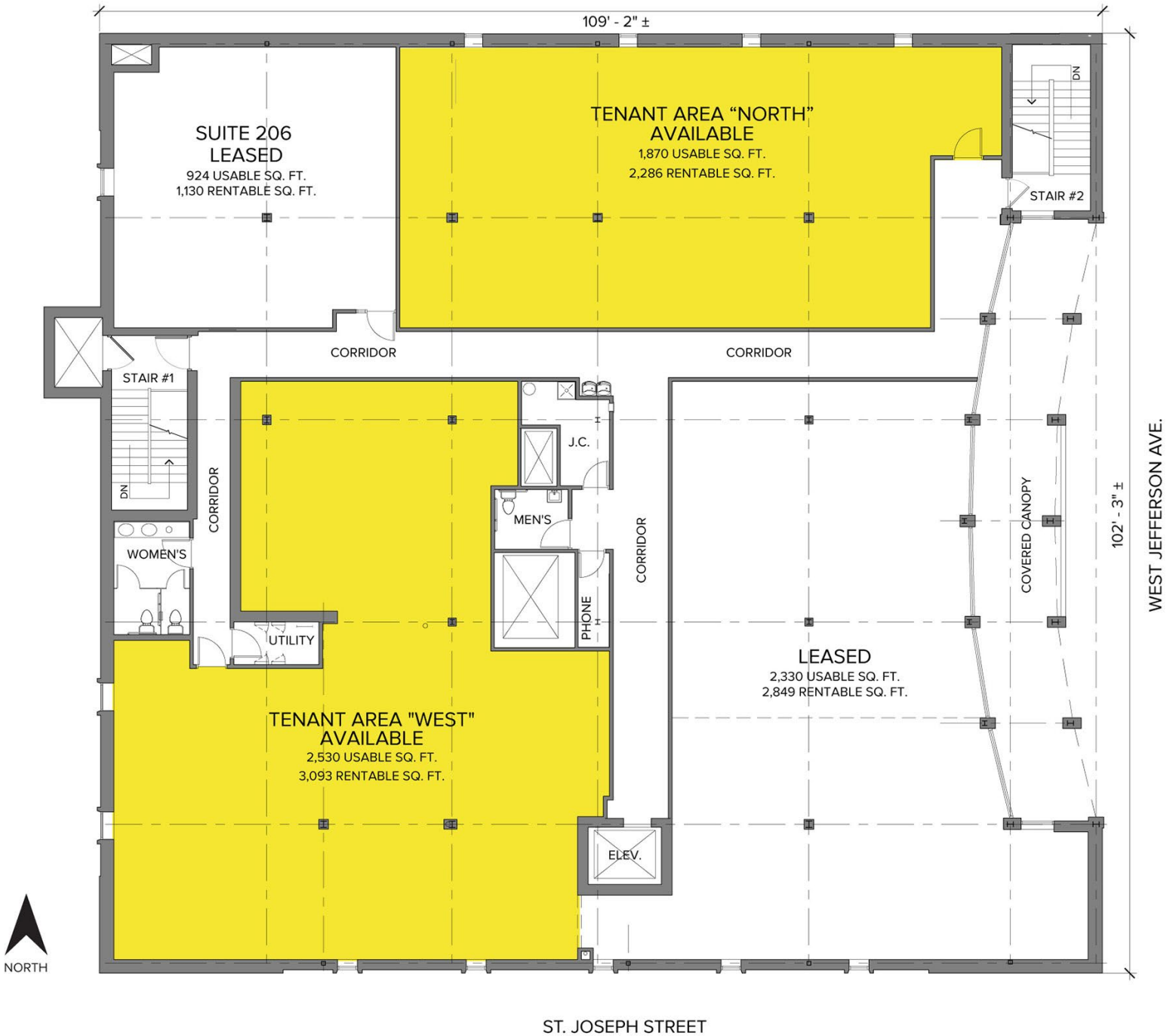


For more information, please contact:

**JUSTIN GAFFREY**  
(248) 799 3143  
jgaffrey@signatureassociates.com

**SIGNATURE ASSOCIATES**  
One Towne Square, Suite 1200  
Southfield, MI 48076  
www.signatureassociates.com

Floor Plan – Second Floor



For more information, please contact:  
**JUSTIN GAFFREY**  
(248) 799 3143  
jgaffrey@signatureassociates.com

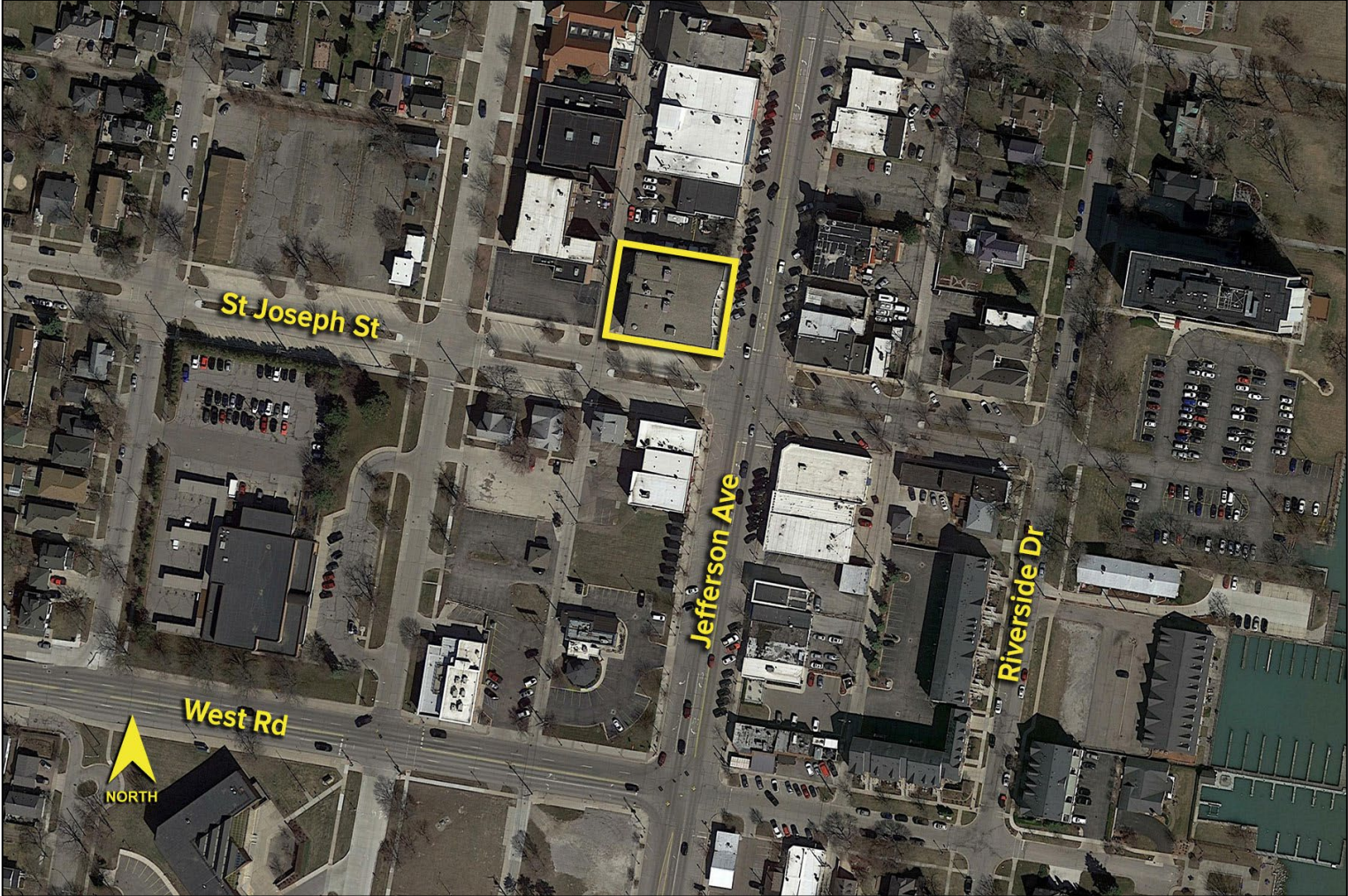
**SIGNATURE ASSOCIATES**  
One Towne Square, Suite 1200  
Southfield, MI 48076  
www.signatureassociates.com

# 2674 W. Jefferson Avenue – Trenton, Michigan

Office For Lease

2,286 – 8,000  
Square Feet  
AVAILABLE

Aerial



For more information, please contact:

**JUSTIN GAFFREY**  
(248) 799 3143  
jgaffrey@signatureassociates.com

**SIGNATURE ASSOCIATES**  
One Towne Square, Suite 1200  
Southfield, MI 48076  
www.signatureassociates.com

Information is subject to verification and no liability for errors or omissions is assumed. Price is subject to change and listing withdrawal.