

10087 SPENCER ROAD  
BRIGHTON, MICHIGAN

OFFICE/LAND FOR SALE  
3,823 Square Feet / 2.30 Acres



**SIGNATURE  
ASSOCIATES**  
KNOW SIGNATURE | KNOW RESULTS

## FRONTAGE ON SPENCER ROAD



## PROPERTY FEATURES

- 3,823 square feet available on 2.30 acres
- Close to intersection of US-23 and I-96
- Ideal location between Lansing and Detroit
- Two parcels that total approximately 2.3 acres and a 3,823 sq. ft. house that was used as office space
- Zoned Commercial/Light Industrial
- Sale Price: \$450,000 (\$1117.71/sq. ft.)



For more information, please contact:

**JEFF LEMANSKI**  
(248) 359 0641  
jlemanski@signatureassociates.com

**MARVIN PETROUS**  
(248) 359 0647  
mpetrous@signatureassociates.com

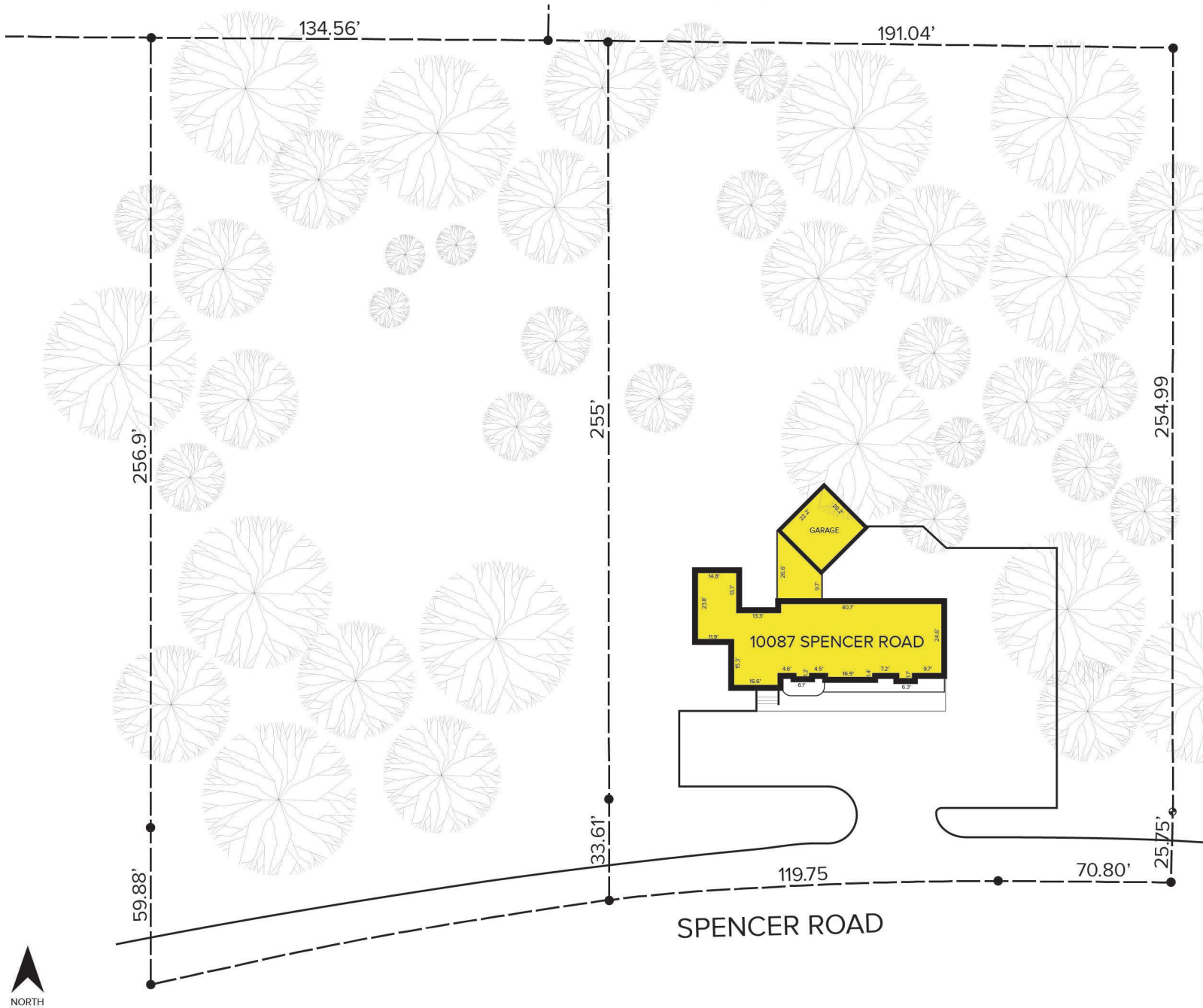
**SIGNATURE ASSOCIATES**  
One Towne Square, Suite 1200  
Southfield, MI 48076  
www.signatureassociates.com

# 10087 Spencer Road – Brighton, Michigan

Office/Land For Sale

3,823  
Square Feet /  
2.30  
Acres

## Site Plan



For more information, please contact:

**JEFF LEMANSKI**  
(248) 359 0641  
jlemanski@signatureassociates.com

**MARVIN PETROUS**  
(248) 359 0647  
mpetrous@signatureassociates.com

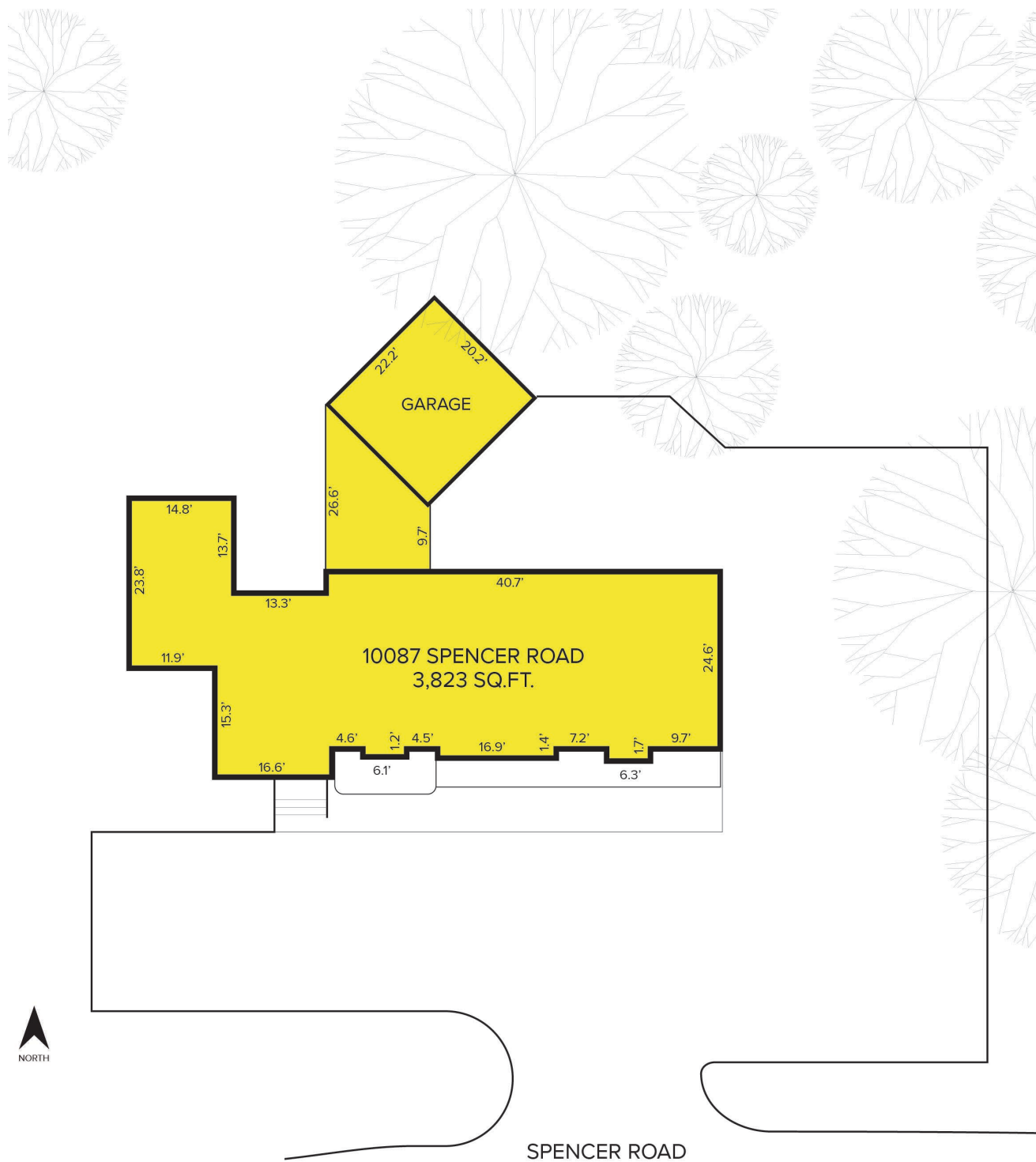
**SIGNATURE ASSOCIATES**  
One Towne Square, Suite 1200  
Southfield, MI 48076  
www.signatureassociates.com

# 10087 Spencer Road – Brighton, Michigan

Office/Land For Sale

3,823  
Square Feet /  
2.30  
Acres

## Floor Plan



For more information, please contact:

**JEFF LEMANSKI**  
(248) 359 0641  
jlemanski@signatureassociates.com

**MARVIN PETROUS**  
(248) 359 0647  
mpetrous@signatureassociates.com

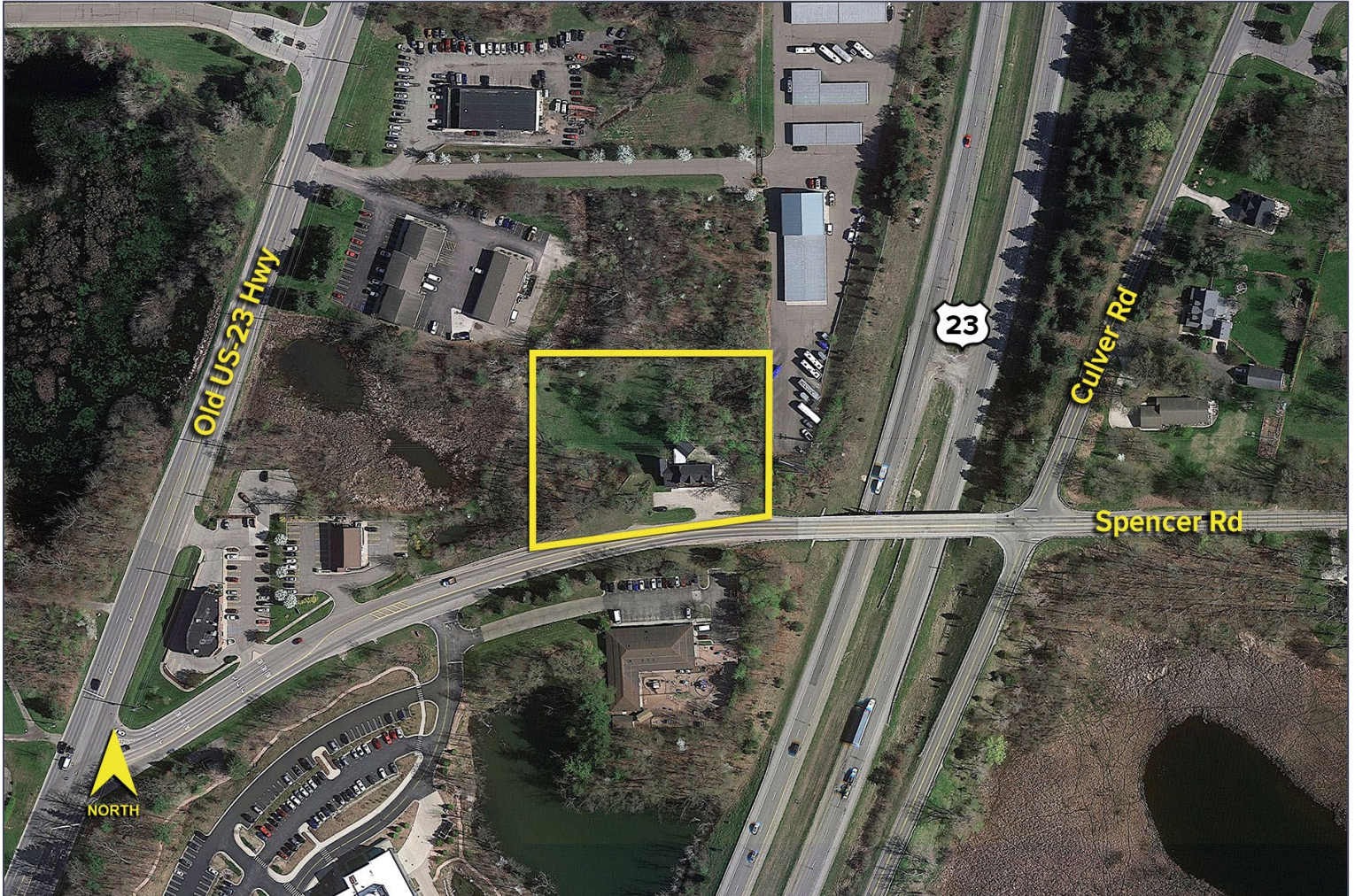
**SIGNATURE ASSOCIATES**  
One Towne Square, Suite 1200  
Southfield, MI 48076  
www.signatureassociates.com

# 10087 Spencer Road – Brighton, Michigan

Office/Land For Sale

3,823  
Square Feet /  
2.30  
Acres

Aerial



For more information, please contact:

**JEFF LEMANSKI**  
(248) 359 0641  
jlemanski@signatureassociates.com

**MARVIN PETROUS**  
(248) 359 0647  
mpetrous@signatureassociates.com

**SIGNATURE ASSOCIATES**  
One Towne Square, Suite 1200  
Southfield, MI 48076  
www.signatureassociates.com