

125 N. COLONY DRIVE  
SAGINAW, MICHIGAN

MEDICAL FOR SALE  
4,600 Square Feet Available



**SIGNATURE  
ASSOCIATES**  
KNOW SIGNATURE | KNOW RESULTS

## COVENANT MEDICAL CENTER



### PROPERTY FEATURES

- 4,600 square feet available
- Great former medical building
- Includes a 600 square foot storage garage with a 12' x 14' grade level door
- Ideal for general medical, dentist, daycare center, or other type of office use
- Zoned commercial improved
- Available immediately
- There is a basement under half of the building
- Sale Price: \$400,000 (\$86.96/sq. ft.)



For more information, please contact:

**JACK TOWNSEND**  
(248) 948 0115  
jtownsend@signatureassociates.com

**SCOTT ELLIOTT**  
(248) 948 4182  
sellott@signatureassociates.com

**SIGNATURE ASSOCIATES**  
One Towne Square, Suite 1200  
Southfield, MI 48076  
www.signatureassociates.com

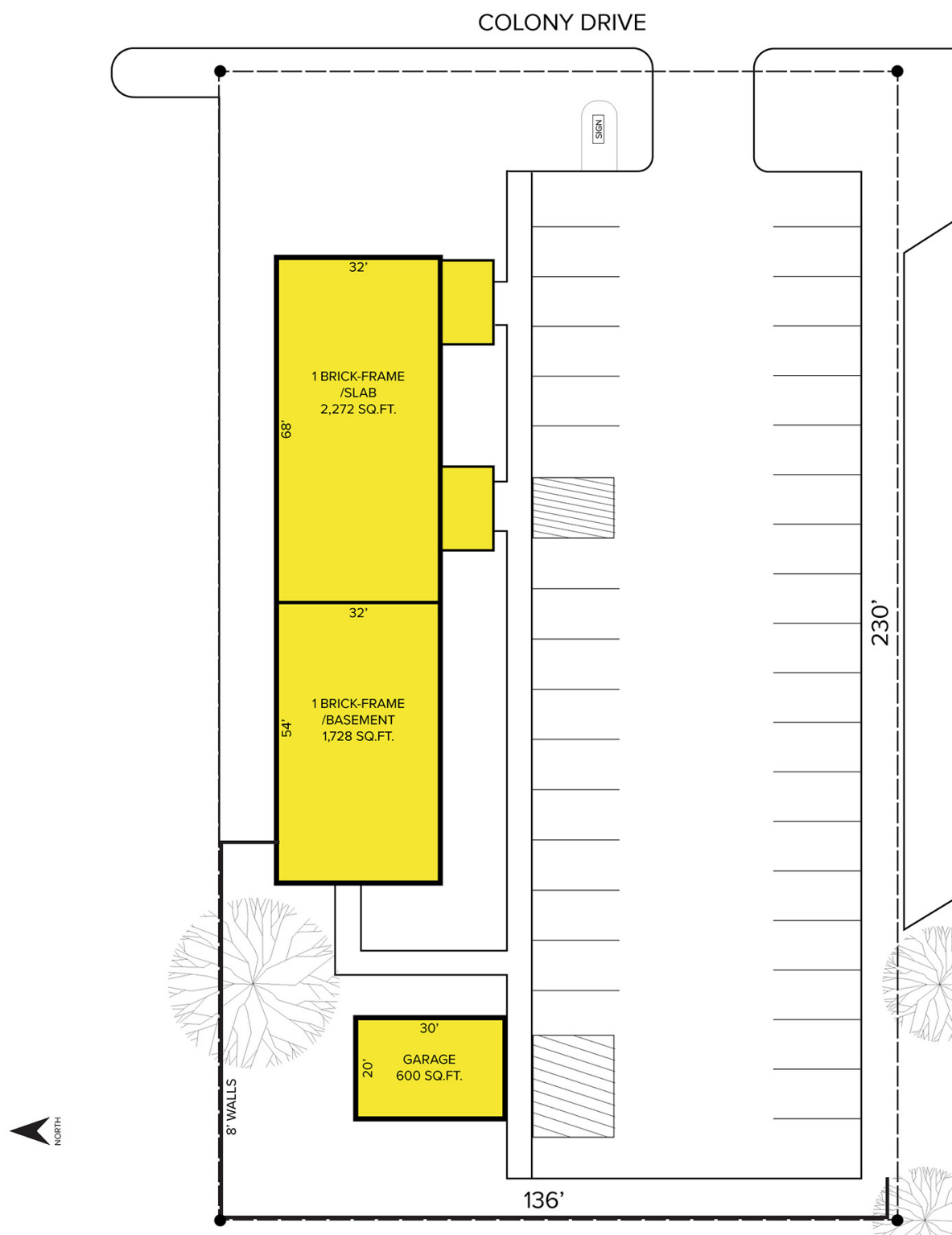
Information is subject to verification and no liability for errors or omissions is assumed. Price is subject to change and listing withdrawal.

# 125 N. Colony Drive – Saginaw, Michigan

## Medical For Sale

4,600  
Square Feet  
AVAILABLE

### Site Plan



For more information, please contact:

**JACK TOWNSEND**

(248) 948 0115

[jtownsend@signatureassociates.com](mailto:jtownsend@signatureassociates.com)

**SCOTT ELLIOTT**

(248) 948 4182

[selliott@signatureassociates.com](mailto:selliott@signatureassociates.com)

**SIGNATURE ASSOCIATES**

One Towne Square, Suite 1200

Southfield, MI 48076

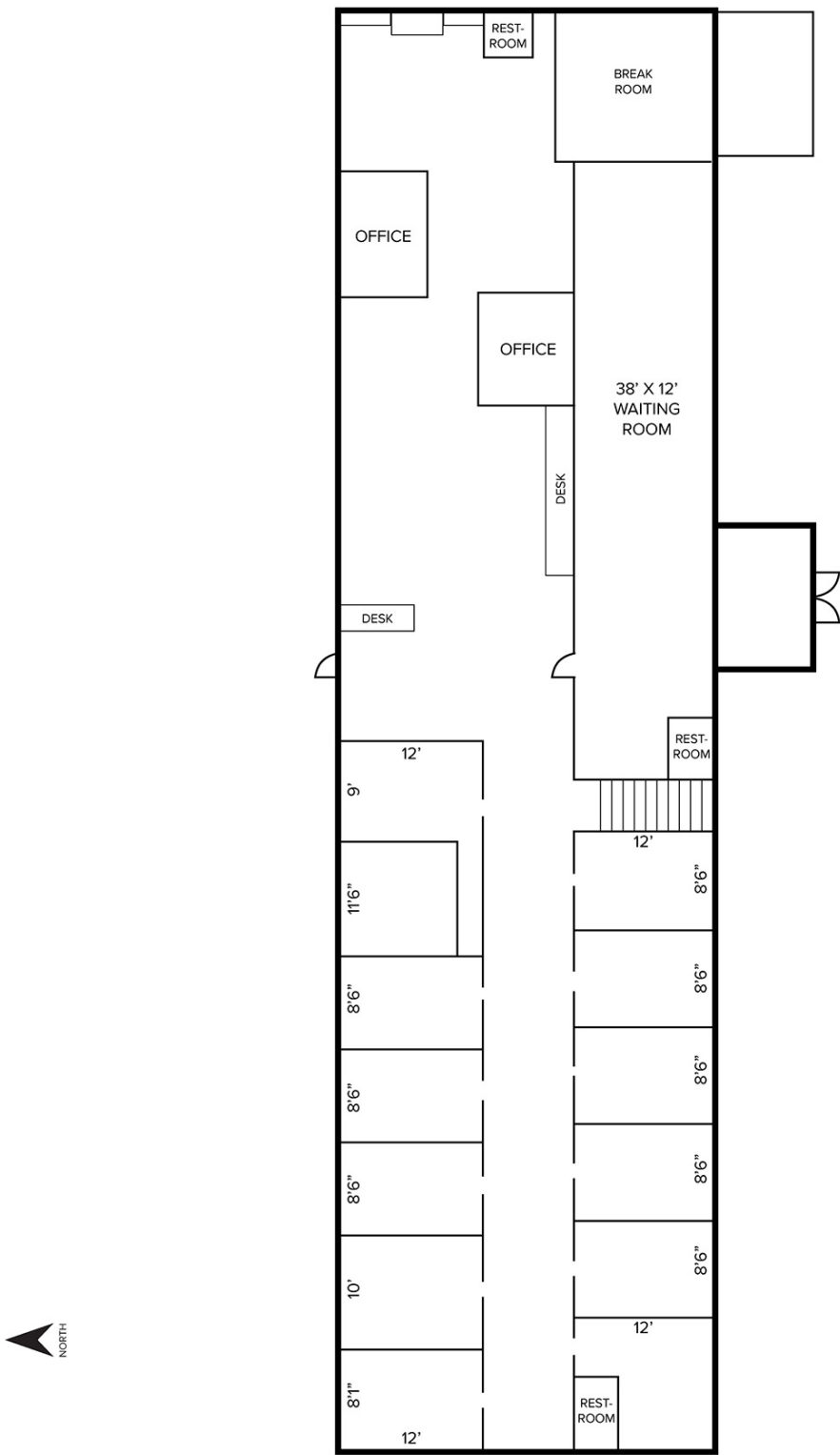
[www.signatureassociates.com](http://www.signatureassociates.com)

Information is subject to verification and no liability for errors or omissions is assumed. Price is subject to change and listing withdrawal.

125 N. Colony Drive – Saginaw, Michigan  
Medical For Sale

4,600  
Square Feet  
AVAILABLE

Floor Plan



For more information, please contact:

**JACK TOWNSEND**  
(248) 948 0115  
jtownsend@signatureassociates.com

**SCOTT ELLIOTT**  
(248) 948 4182  
sellott@signatureassociates.com

**SIGNATURE ASSOCIATES**  
One Towne Square, Suite 1200  
Southfield, MI 48076  
www.signatureassociates.com

Information is subject to verification and no liability for errors or omissions is assumed. Price is subject to change and listing withdrawal.

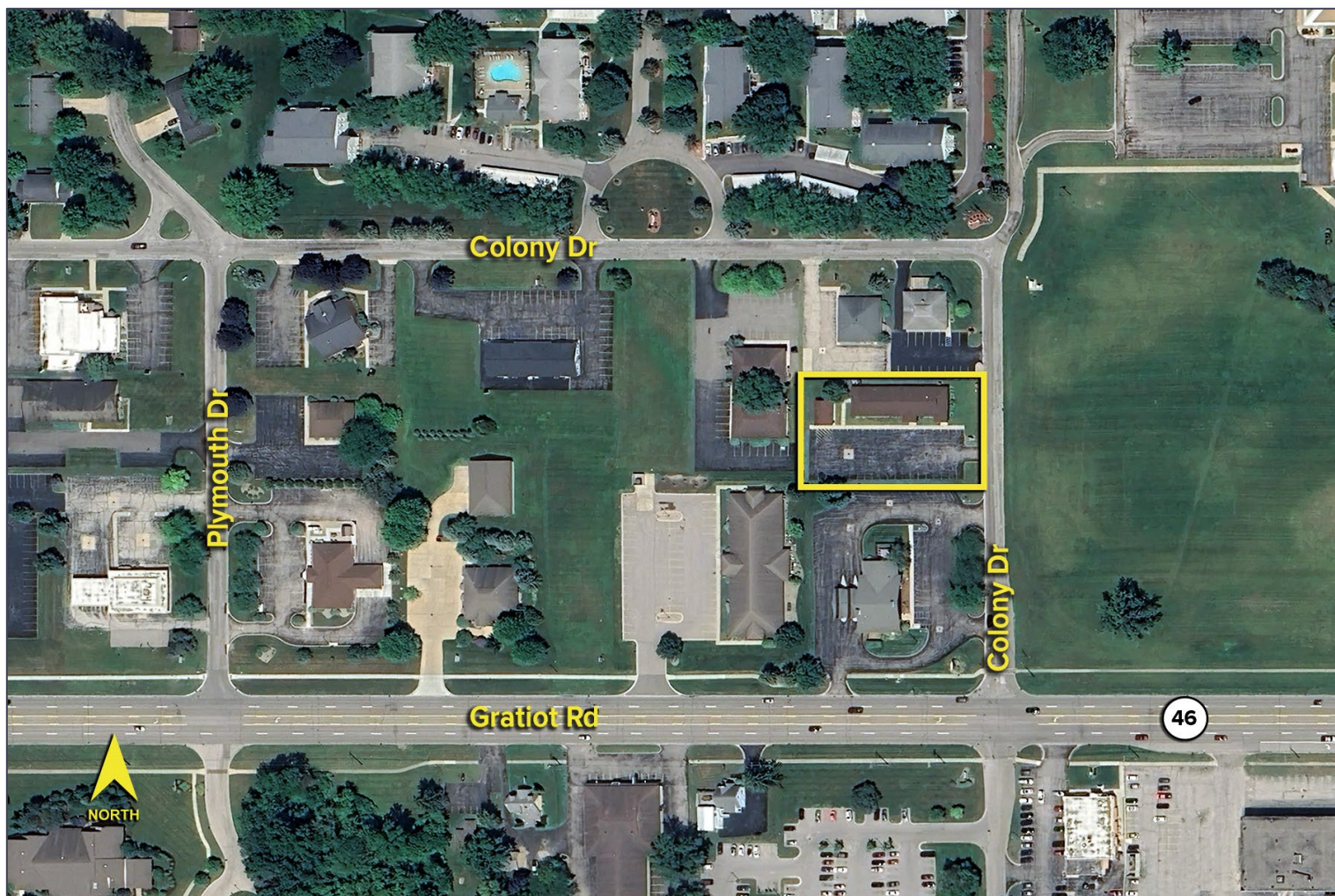


# 125 N. Colony Drive – Saginaw, Michigan

## Medical For Sale

4,600  
Square Feet  
AVAILABLE

Aerial



For more information, please contact:

**JACK TOWNSEND**

(248) 948 0115

[jtownsend@signatureassociates.com](mailto:jtownsend@signatureassociates.com)

**SCOTT ELLIOTT**

(248) 948 4182

[selliott@signatureassociates.com](mailto:selliott@signatureassociates.com)

**SIGNATURE ASSOCIATES**

One Towne Square, Suite 1200

Southfield, MI 48076

[www.signatureassociates.com](http://www.signatureassociates.com)

Information is subject to verification and no liability for errors or omissions is assumed. Price is subject to change and listing withdrawal.